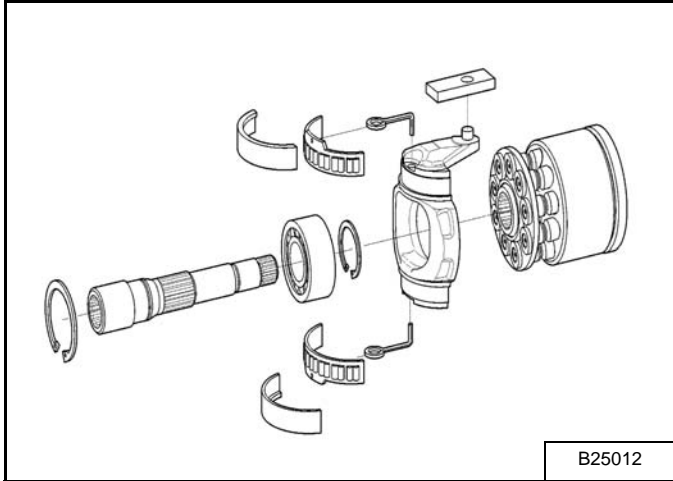


HYDROSTATIC PUMP (SJC) (S/N A7MP62126 & ABOVE AND AAKZ35001 & ABOVE) (CONT'D)

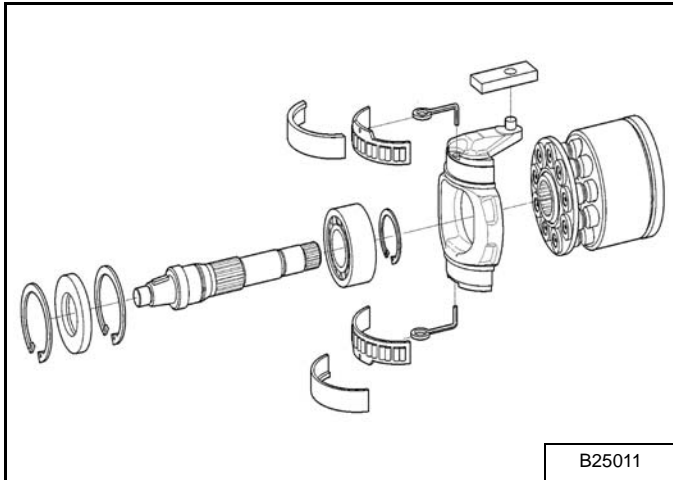
Disassembly And Assembly (Cont'd)

Figure 30-42-37



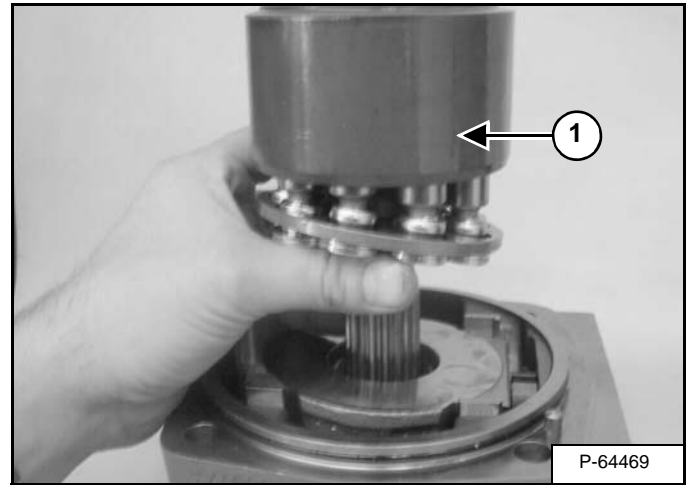
Right Side Rotating Group [Figure 30-42-37].

Figure 30-42-38



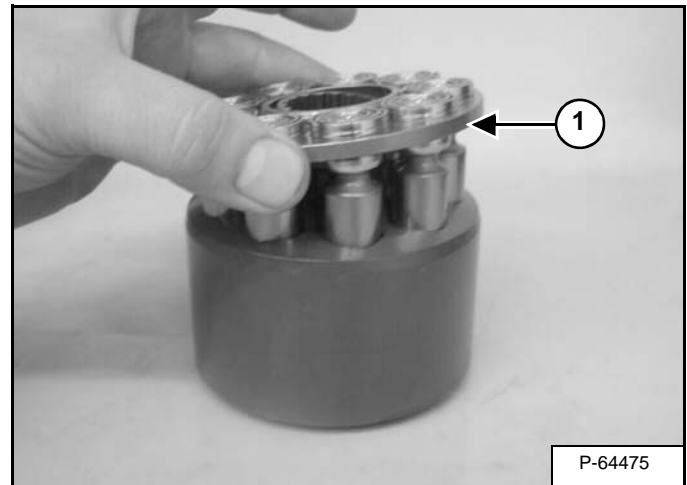
Left Side Rotating Group [Figure 30-42-38].

Figure 30-42-39



Remove the piston assembly (Item 1) [Figure 30-42-39].

Figure 30-42-40

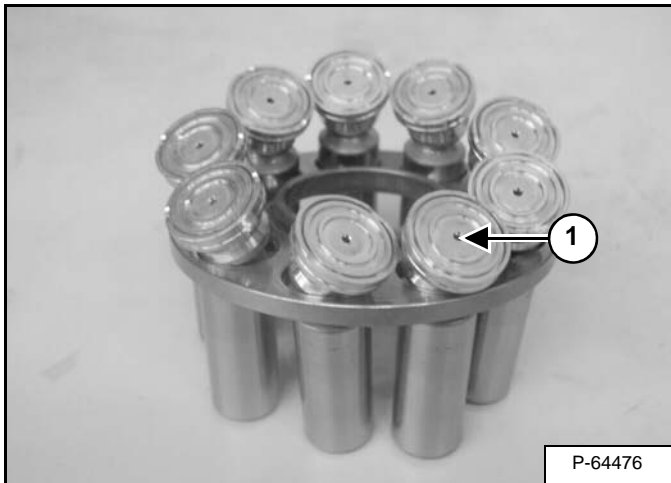


Remove the pistons (Item 1) [Figure 30-42-40] from the rotating block.

HYDROSTATIC PUMP (SJC) (S/N A7MP62126 & ABOVE AND AAKZ35001 & ABOVE) (CONT'D)

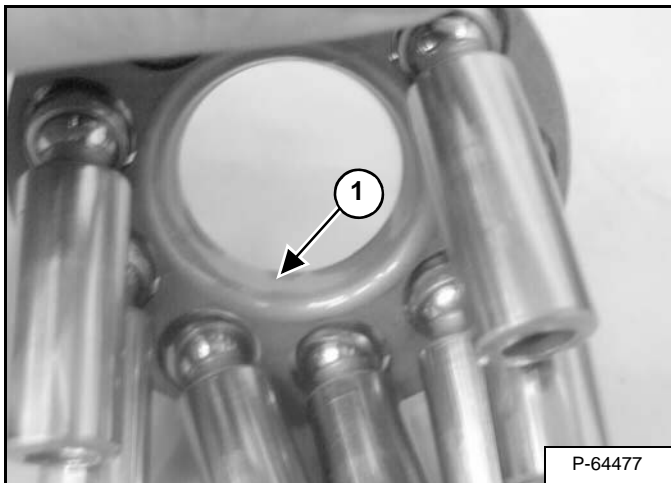
Disassembly And Assembly (Cont'd)

Figure 30-42-41



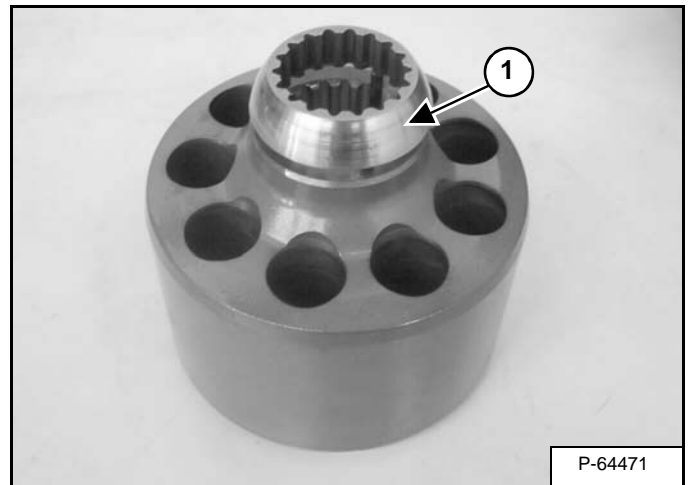
Inspect the pistons, look for scoring and scratches. Ensure the holes (Item 1) [Figure 30-42-41] in the slippers, are not plugged.

Figure 30-42-42



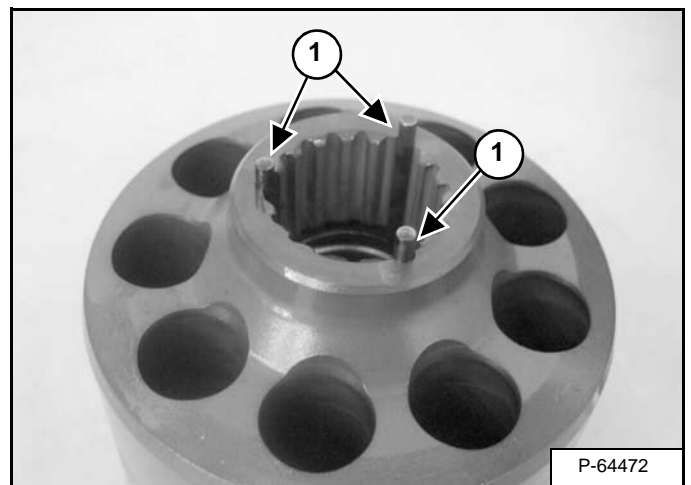
Inspect the mating surface of the spherical washer for scoring or scratches (Item 1) [Figure 30-42-42].

Figure 30-42-43



Remove the spherical washer (Item 1) [Figure 30-42-43].

Figure 30-42-44

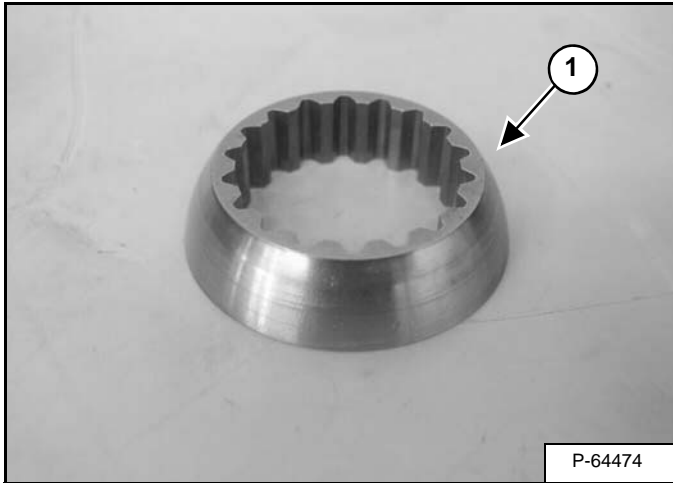


Inspect the pins (Item 1) [Figure 30-42-44]. They should be all the same length. Do not remove.

HYDROSTATIC PUMP (SJC) (S/N A7MP62126 & ABOVE AND AAKZ35001 & ABOVE) (CONT'D)

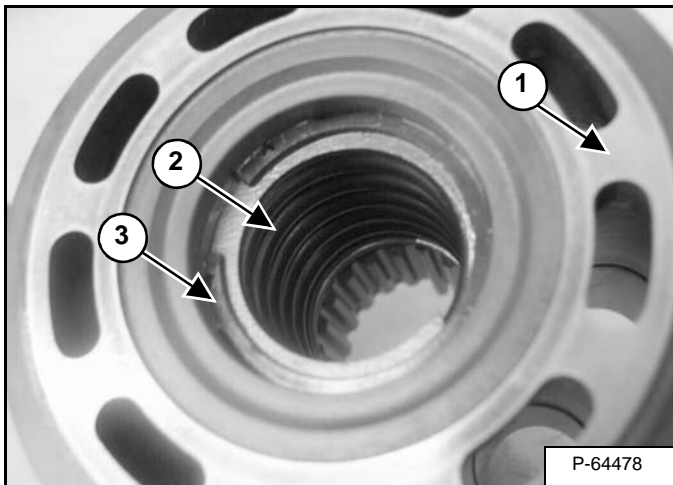
Disassembly And Assembly (Cont'd)

Figure 30-42-45



Inspect the spherical washer for scoring and wear (Item 1) [Figure 30-42-45].

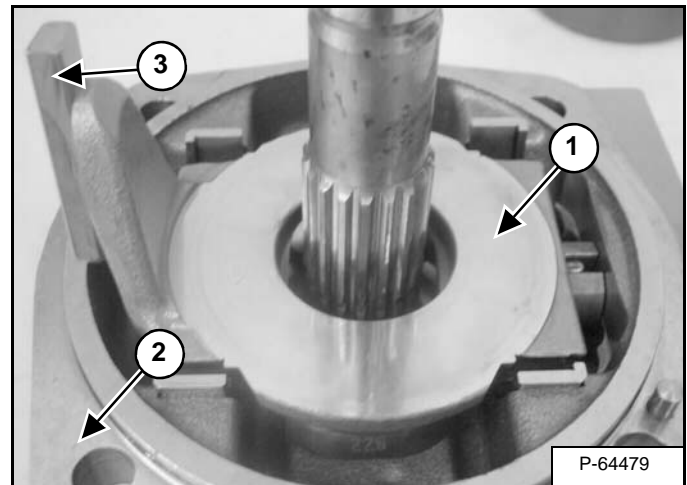
Figure 30-42-46



Inspect the back surface of the rotating block (Item 1) [Figure 30-42-46] where the valve plate seals. Ensure there is no scratches or scoring.

Visually ensure spring (Item 2) and c-clip (Item 3) [Figure 30-42-46] are not bent or damaged.

Figure 30-42-47

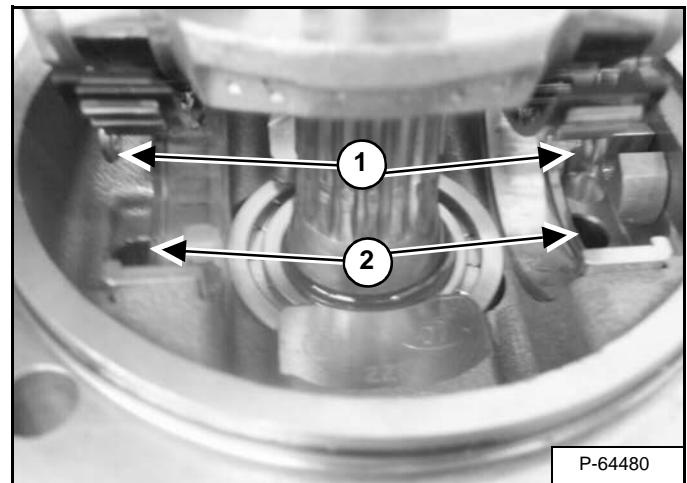


Inspect mating surface for the slippers on the swash plate (Item 1) [Figure 30-42-47].

Remove the swash plate from the endcap housing (Item 2) [Figure 30-42-47].

Remove the slide ring (Item 3) [Figure 30-42-47], ensure it pivots freely.

Figure 30-42-48

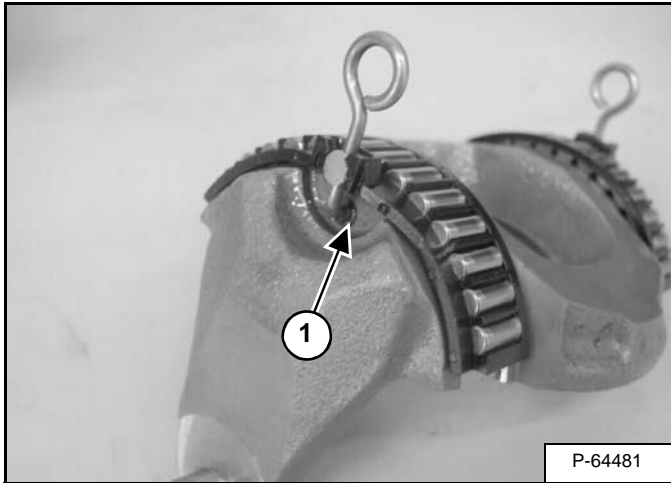


**Assembly:** Carefully align bearing pin eyelets (Item 1) into holes in endcap housing (Item 2) [Figure 30-42-48].

**HYDROSTATIC PUMP (SJC) (S/N A7MP62126 & ABOVE AND AAKZ35001 & ABOVE) (CONT'D)**

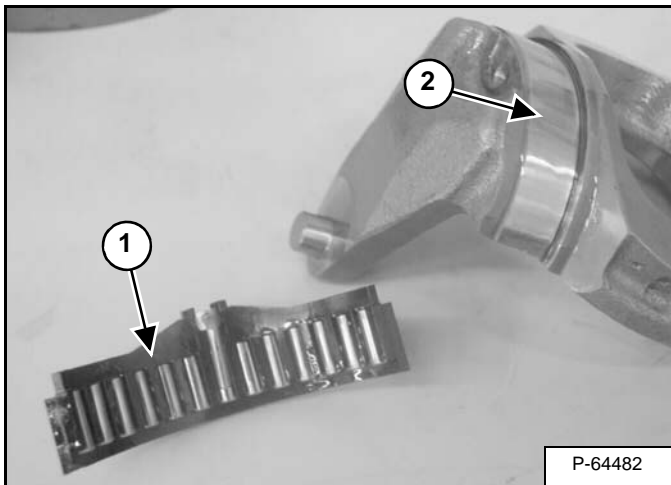
**Disassembly And Assembly (Cont'd)**

**Figure 30-42-49**



**Assembly:** Ensure bearing pins are in the holes of the swash plate (Item 1) [Figure 30-42-49].

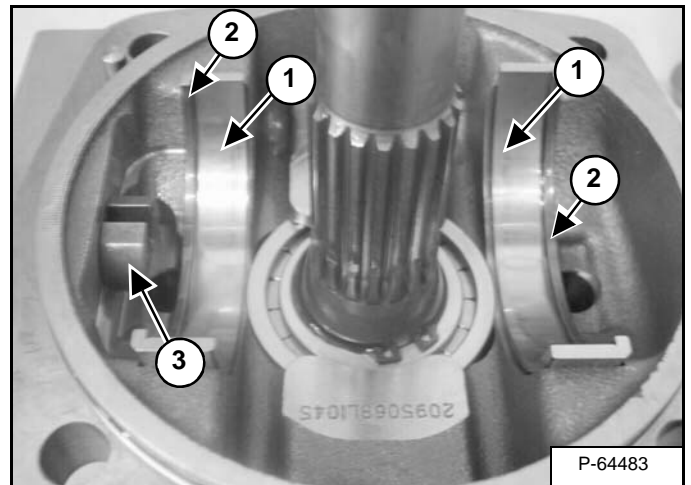
**Figure 30-42-50**



Remove the shell bearing (Item 1) [Figure 30-42-50].

Inspect individual roller bearings and machined surfaces (Item 2) [Figure 30-42-50] on swash plate.

**Figure 30-42-51**



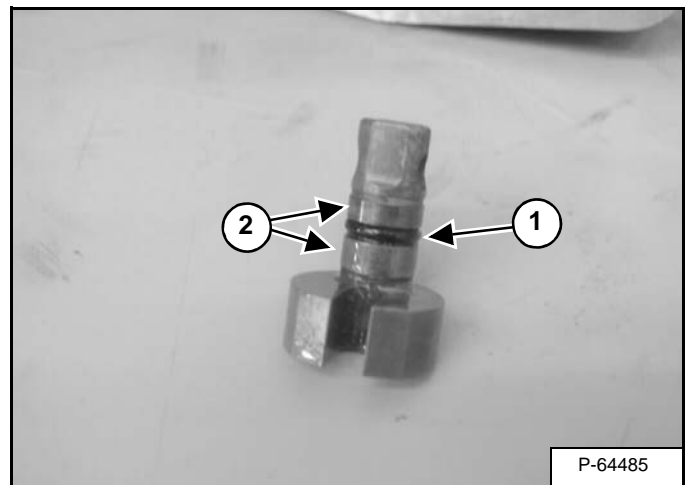
Remove the shell bearing races (Item 1) [Figure 30-42-51].

**Assembly:** Note shell bearing races have an edge (Item 2) [Figure 30-42-51] on them. The edges face towards the outside of the endcap housing

Inspect bearing surfaces for scratches or scoring.

Remove the positioning pin (Item 3) [Figure 30-42-51].

**Figure 30-42-52**



Replace O-ring (Item 1) [Figure 30-42-52].

Inspect wear surfaces (Item 2) [Figure 30-42-52] for scratches or scoring. Ensure positioning pin can rotate smoothly in the end housing without excessive play.

HYDROSTATIC PUMP (SJC) (S/N A7MP62126 & ABOVE AND AAKZ35001 & ABOVE) (CONT'D)

Disassembly And Assembly (Cont'd)

Figure 30-42-53

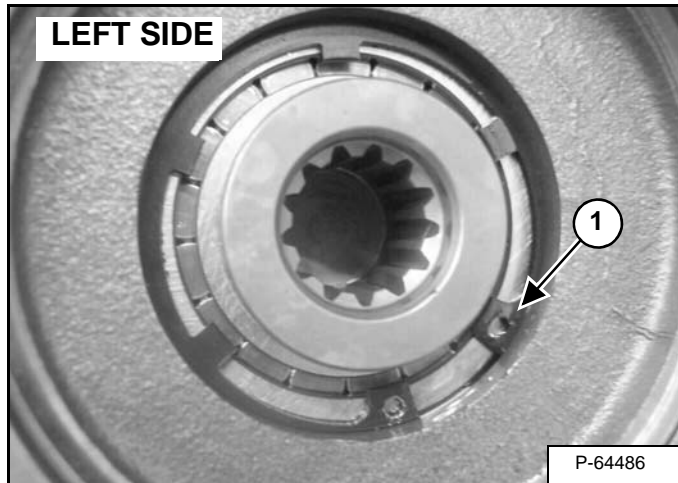
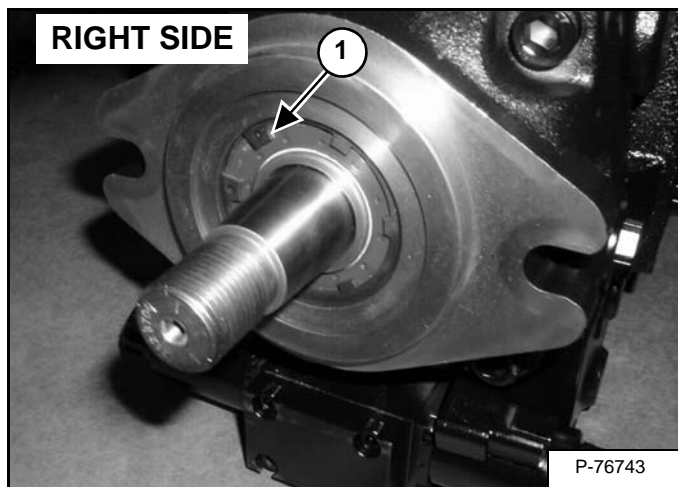
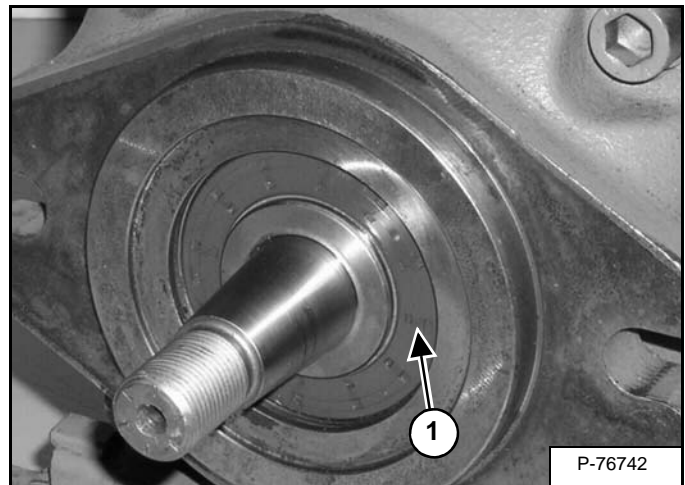


Figure 30-42-54



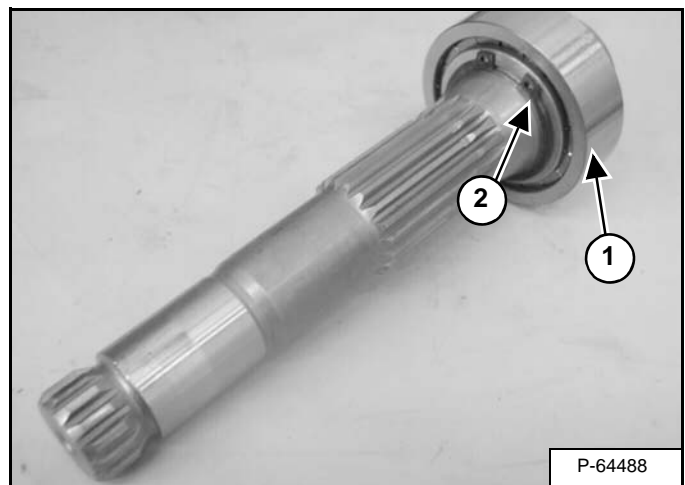
Remove the snap ring (Item 1) [Figure 30-42-53] and [Figure 30-42-54] from the end housing.

Figure 30-42-55



The pump seal (Item 1) [Figure 30-42-55] is removed by inserting a screw into the seal and prying out.

Figure 30-42-56



The drive shaft can be tapped out of the end housing with a rubber mallet.

Inspect wear surfaces for scratches, and inspect splines for excessive wear.

Inspect bearing (Item 1); if bearing needs replacement, remove snap ring (Item 2) [Figure 30-42-56] and remove bearing.

