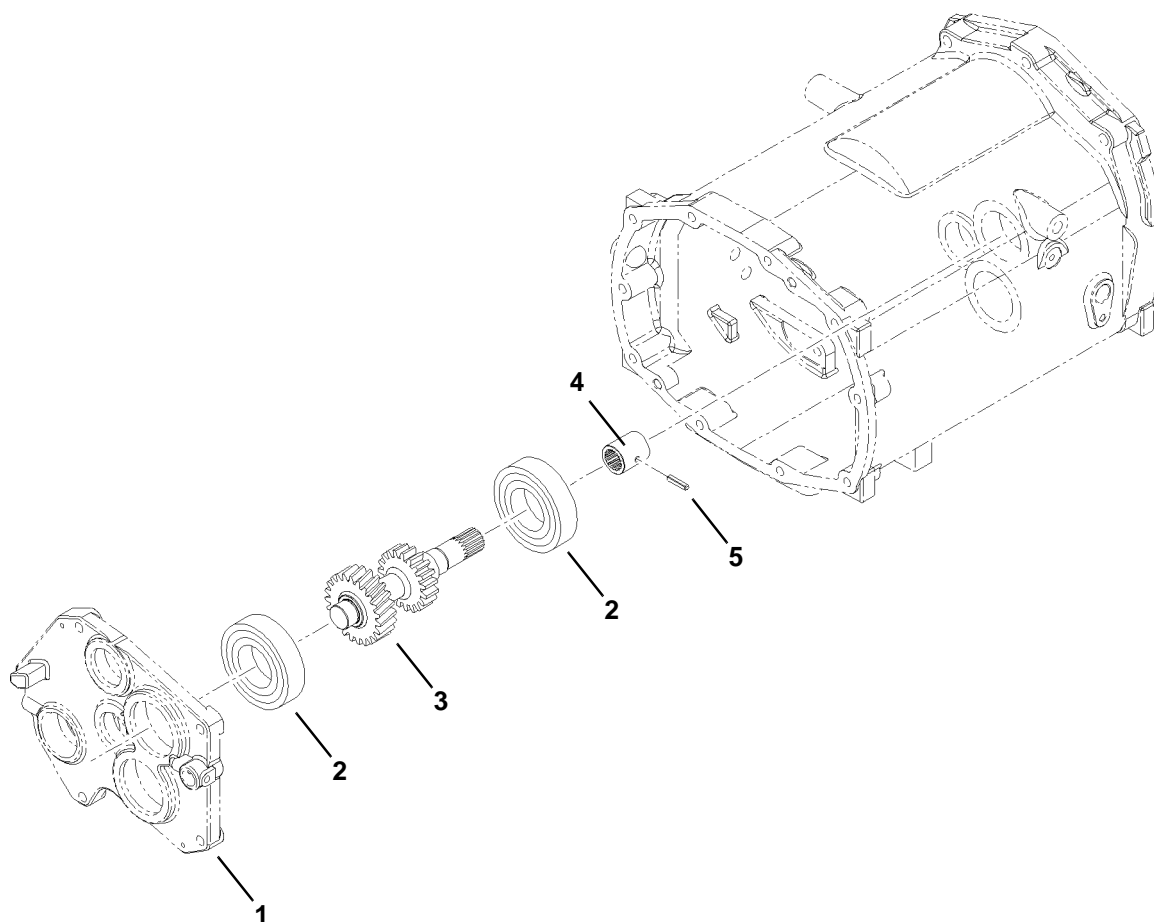


TRANSMISSION (SST MODELS) (CONT'D)

Middle Case / 23-20 Gear Shaft Parts Identification

1. Bearing Cover
2. Bearing
3. 23-20 Gear Shaft
4. Coupler
5. Roll Pin

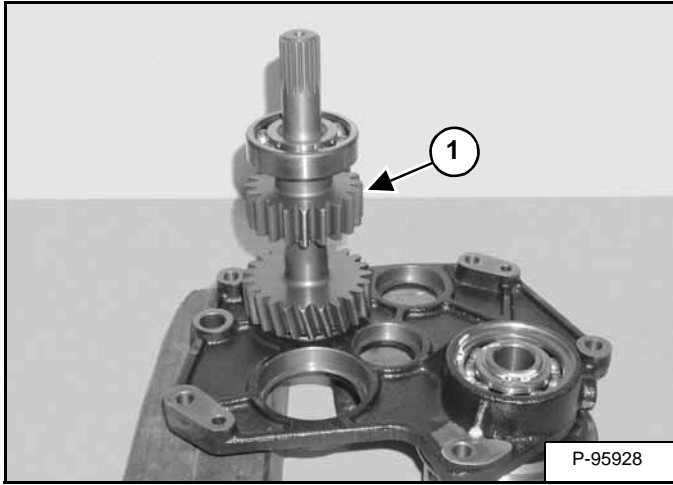


NA1973

TRANSMISSION (SST MODELS) (CONT'D)

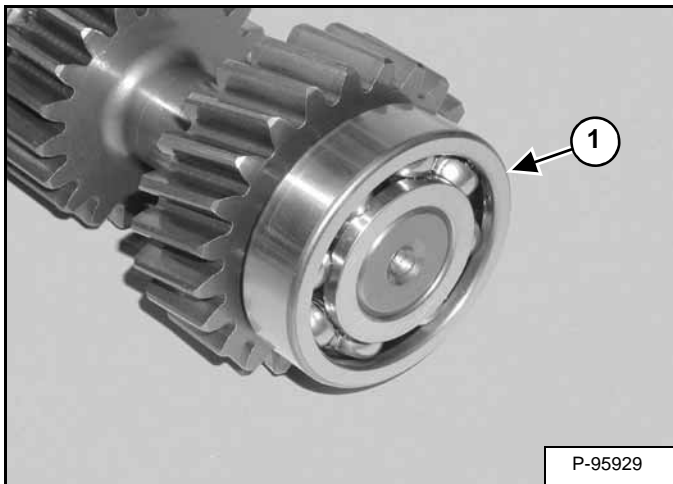
Middle Case / 23-20 Gear Shaft Disassembly

Figure 40-61-144



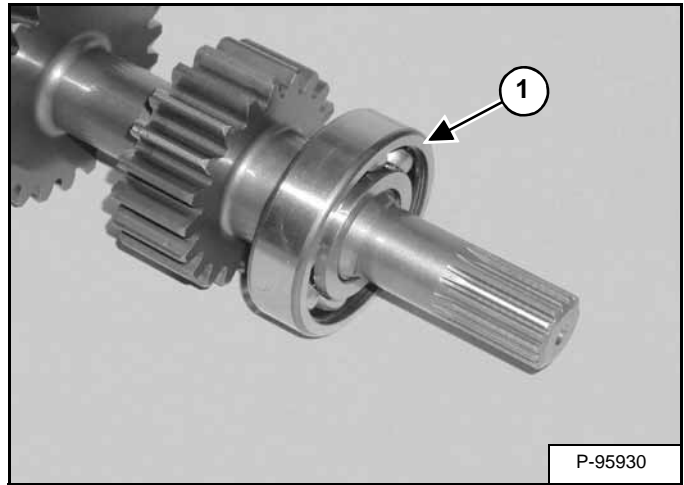
Remove the 23-20 gear shaft assembly (Item 1) [Figure 40-61-144] from the bearing cover.

Figure 40-61-145



Remove the bearing (Item 1) [Figure 40-61-145] from the shaft.

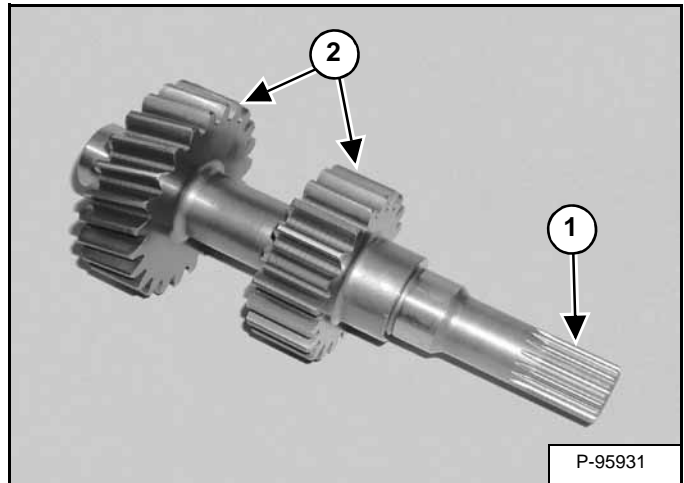
Figure 40-61-146



Remove the bearing (Item 1) [Figure 40-61-146].

Middle Case / 23-30 Gear Shaft Inspection

Figure 40-61-147



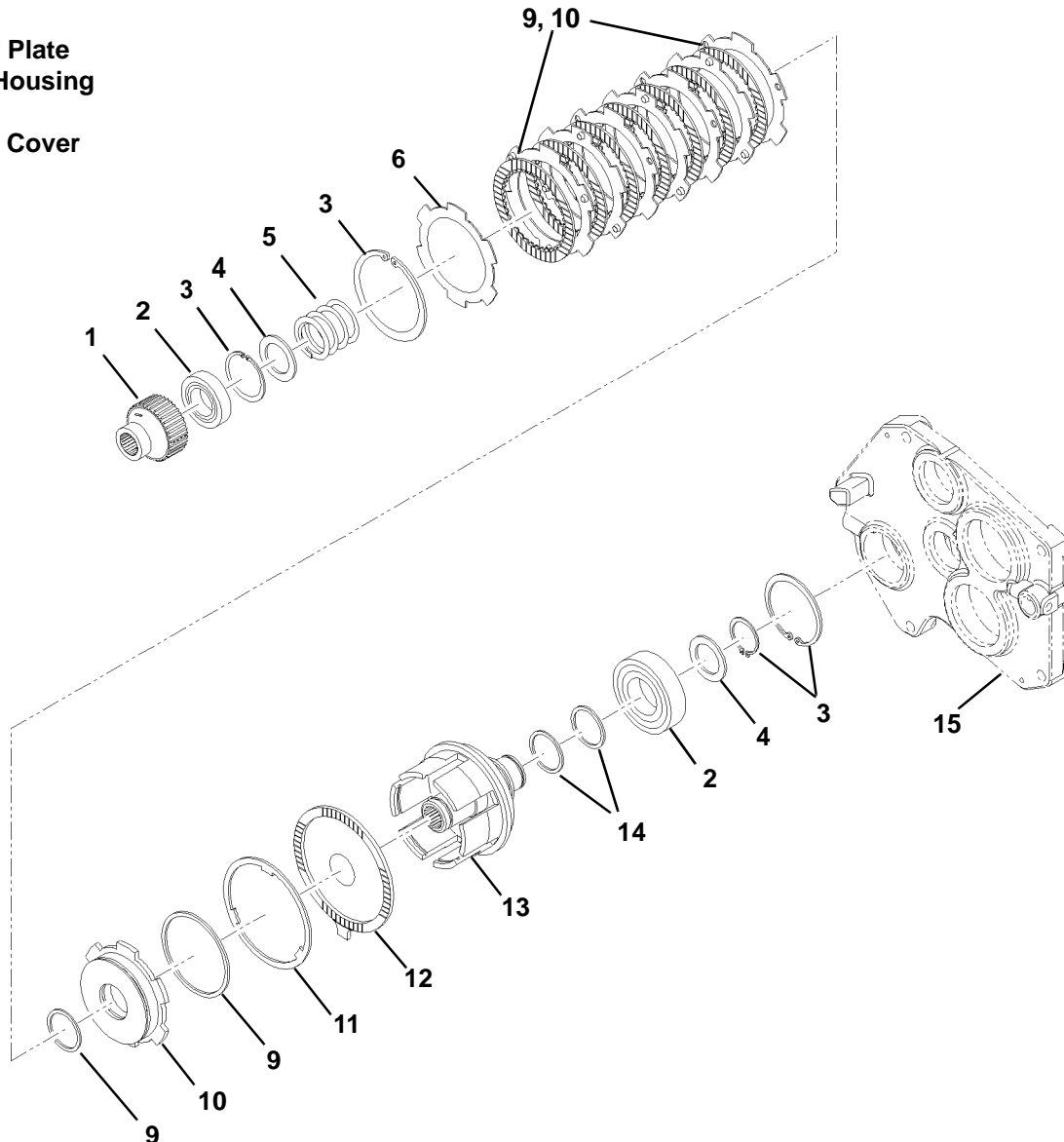
Inspect the shaft splines (Item 1) [Figure 40-61-147] for wear or damage.

Inspect the gears (Item 2) [Figure 40-61-147] for worn or cracked teeth. If any of the gears are damaged, replace all gears. One damaged gear can cause microscopic fatigue cracks in the mating teeth and cause premature failure after servicing.

TRANSMISSION (SST MODELS) (CONT'D)

Middle Case / PTO Clutch Parts Identification

- 1. Splined Hub
- 2. Bearing
- 3. Snap Ring
- 4. Washer
- 5. Spring
- 6. Plate
- 7. Friction Plate
- 8. Pressure Plate
- 9. O-Ring
- 10. Piston
- 11. Ring
- 12. Stopper Plate
- 13. Clutch Housing
- 14. Seal
- 15. Bearing Cover

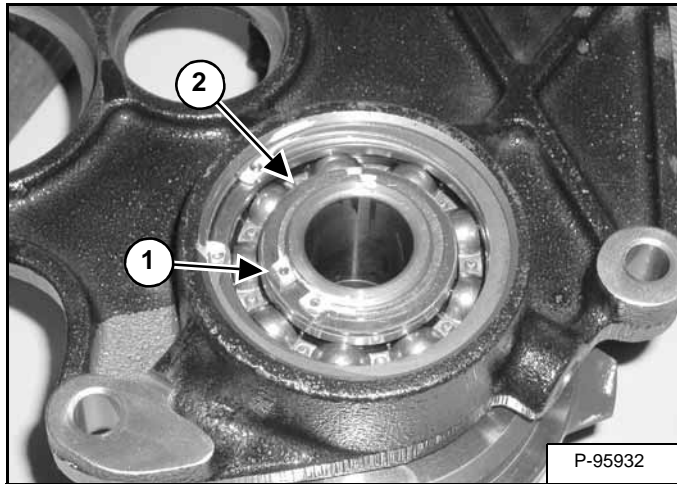


NA1972

TRANSMISSION (SST MODELS) (CONT'D)

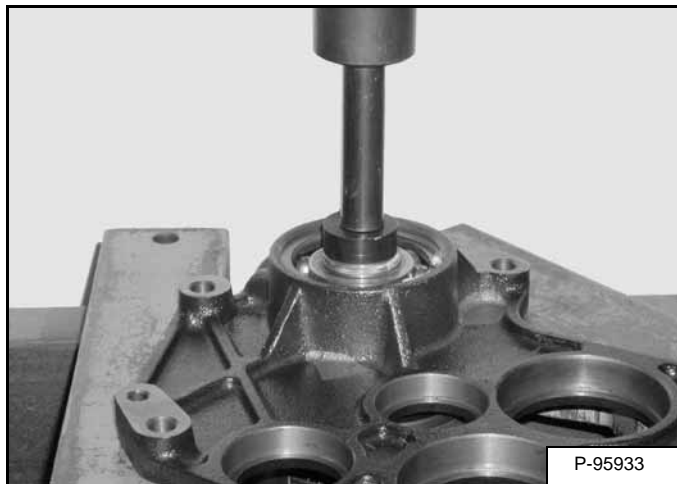
Middle Case / PTO Clutch Disassembly

Figure 40-61-148



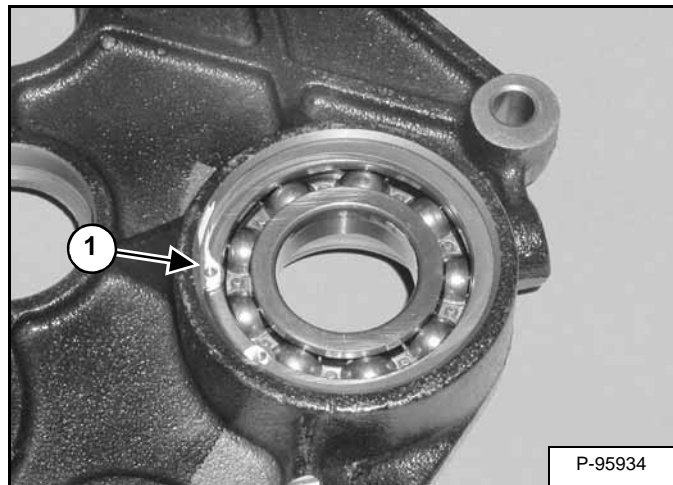
Remove the snap ring (Item 1) and washer (Item 2) [Figure 40-61-148] from the PTO clutch bearing.

Figure 40-61-149



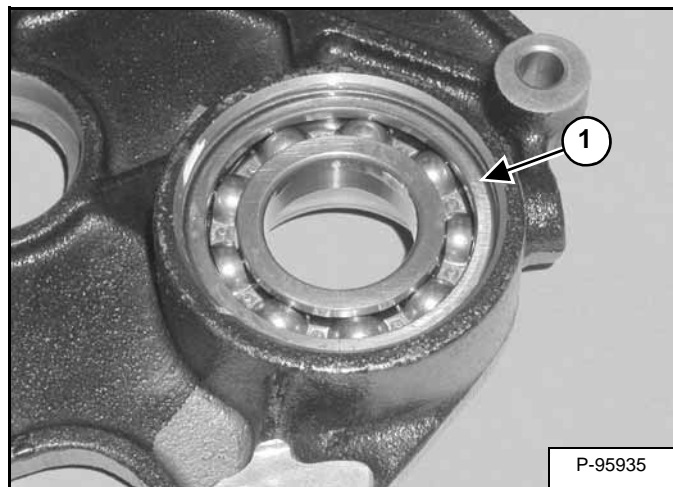
Press the PTO clutch assembly from bearing cover [Figure 40-61-149].

Figure 40-61-150



Remove the snap ring (Item 1) [Figure 40-61-150].

Figure 40-61-151

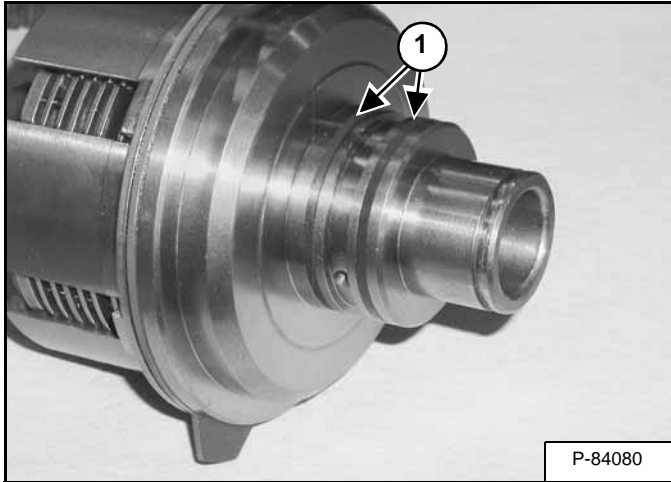


Remove the bearing (Item 1) [Figure 40-61-151] from the cover.

TRANSMISSION (SST MODELS) (CONT'D)

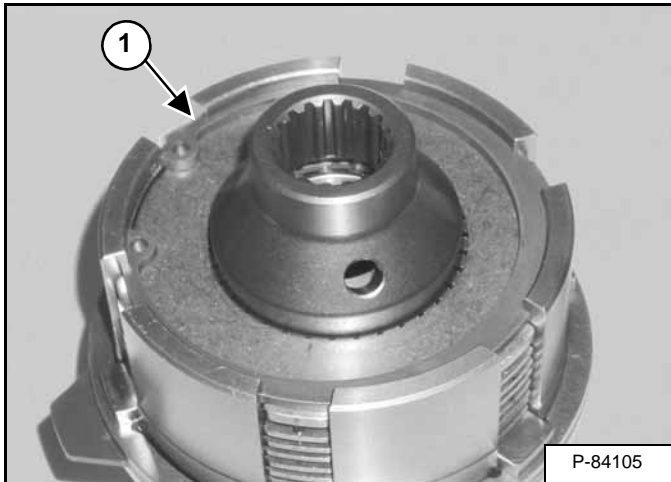
Middle Case / PTO Clutch Disassembly (Cont'd)

Figure 40-61-152



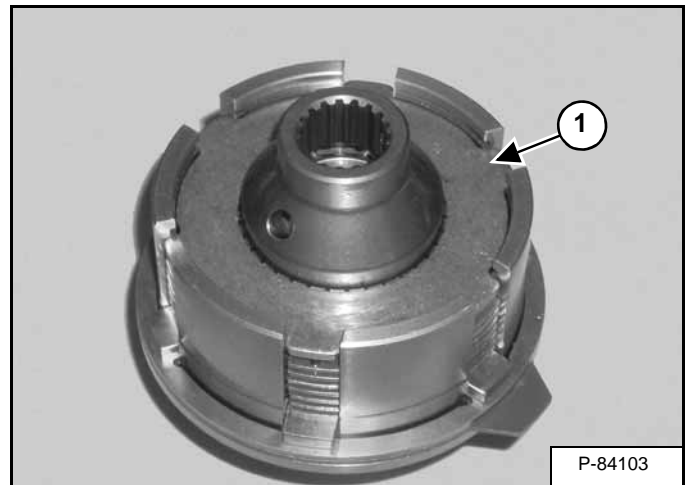
Remove the two seals (Item 1) [Figure 40-61-152] from the clutch assembly.

Figure 40-61-153



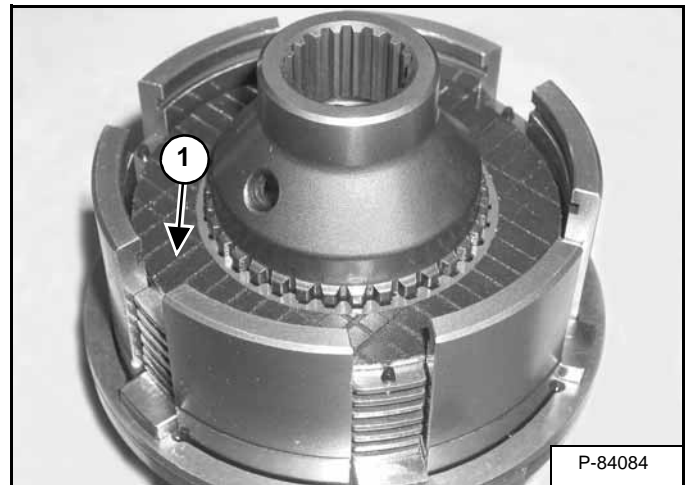
Remove the snap ring (Item 1) [Figure 40-61-153].

Figure 40-61-154



Remove the pressure plate (Item 1) [Figure 40-61-154].

Figure 40-61-155



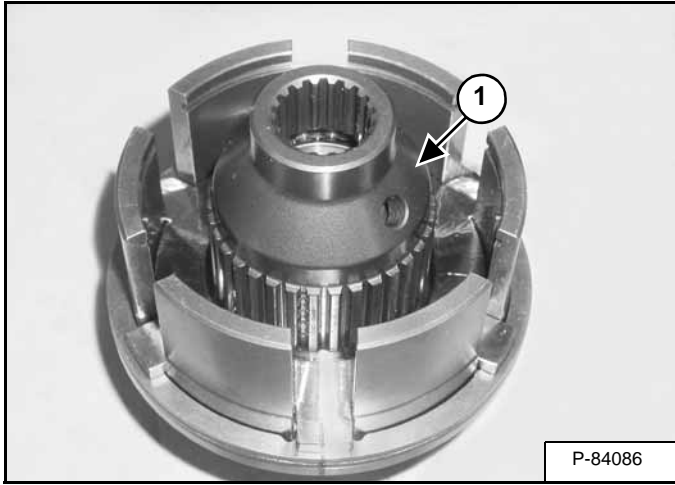
Remove the friction plate (Item 1) [Figure 40-61-155].

Repeat the above procedures to remove the remaining pressure and friction plates.

TRANSMISSION (SST MODELS) (CONT'D)

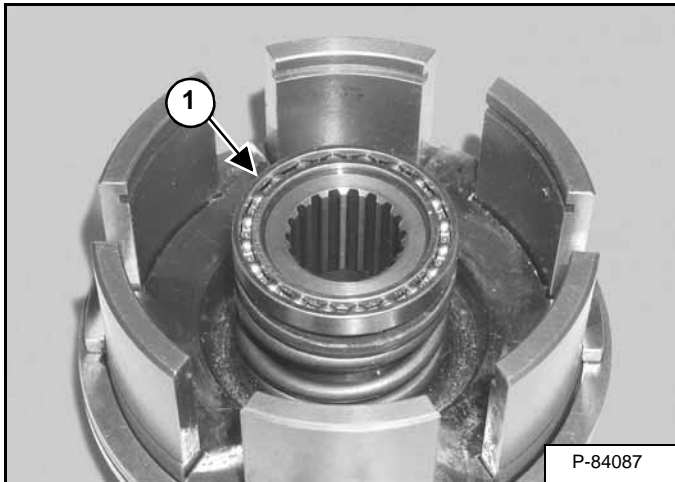
Middle Case / PTO Clutch Disassembly (Cont'd)

Figure 40-61-156



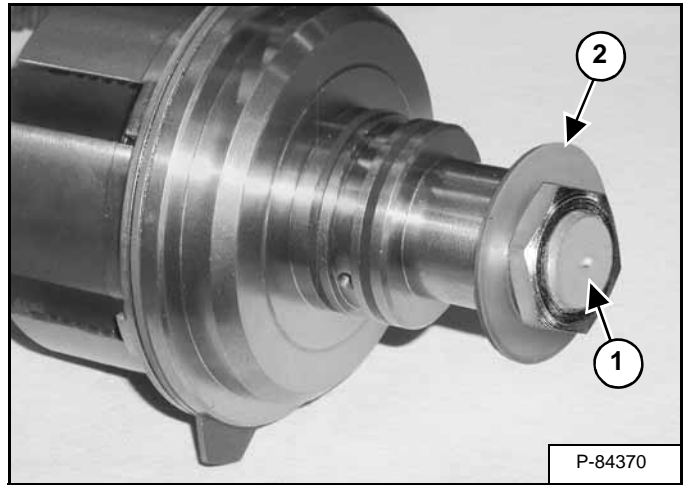
Remove the splined hub (Item 1) [Figure 40-61-156] from the clutch assembly.

Figure 40-61-157



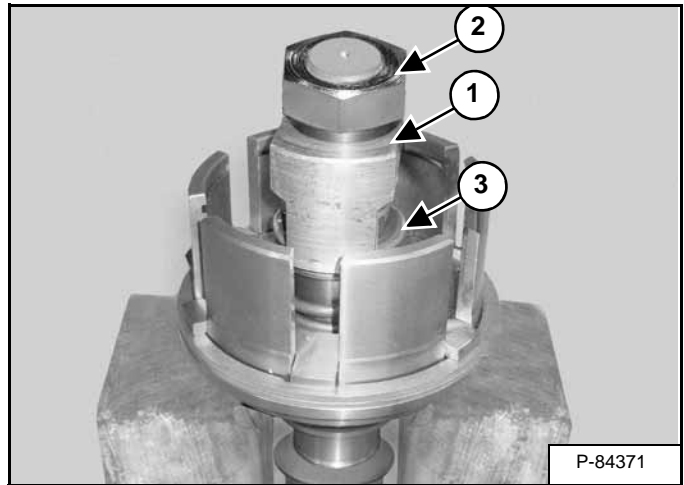
Remove the bearing (Item 1) [Figure 40-61-157].

Figure 40-61-158



Install a 3/4 x 5 in. (M 20 x 130 mm) bolt (Item 1) and washer (Item 2) [Figure 40-61-158] into the clutch pack as shown.

Figure 40-61-159



Install the tool (Item 1) and nut (Item 2) onto the clutch pack, tighten the nut and remove the snap ring (Item 3) [Figure 40-61-159] from the groove.

Remove the tool from the clutch pack.