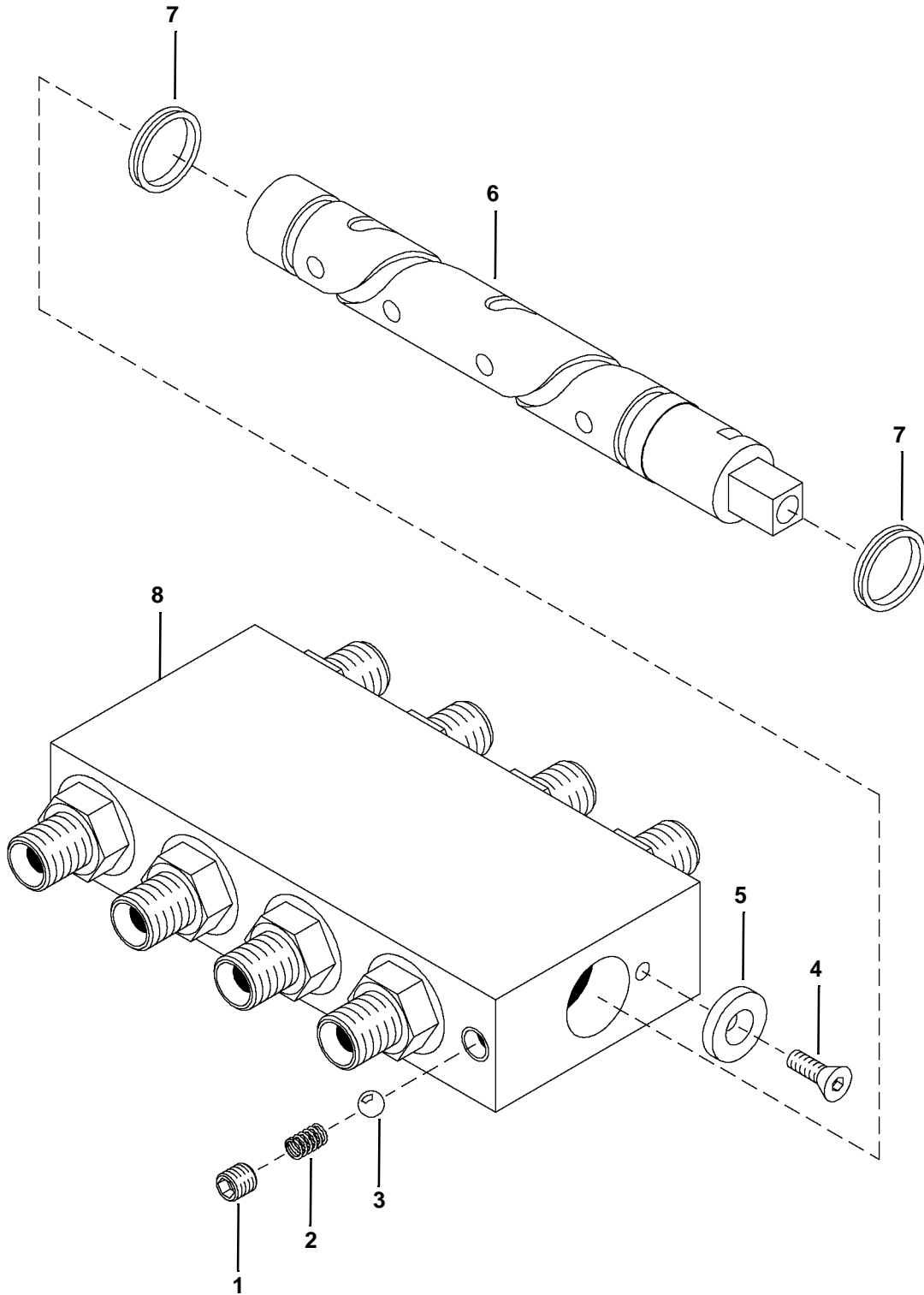


CONTROL PATTERN SELECTOR VALVE (CONT'D)

Parts Identification

- 1. Set Screw
- 2. Spring
- 3. Ball
- 4. Screw
- 5. Washer
- 6. Spool
- 7. U Seal
- 8. Valve Block

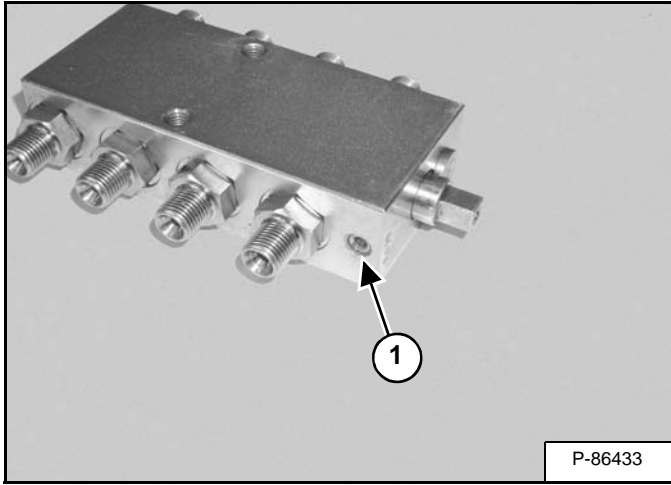


MS-2811S

CONTROL PATTERN SELECTOR VALVE (CONT'D)

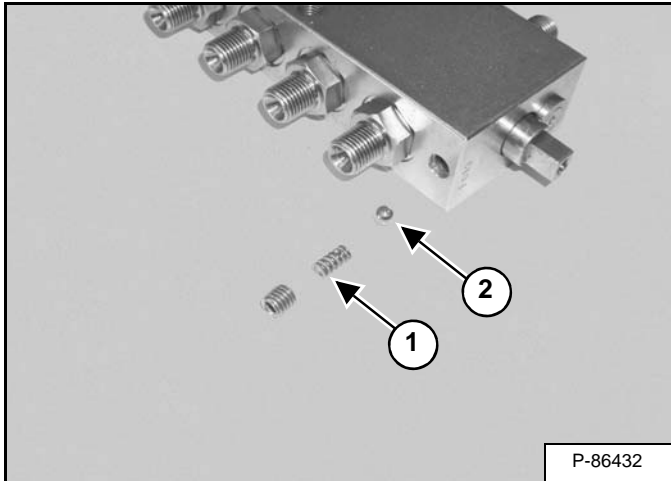
Disassembly

Figure 20-100-3



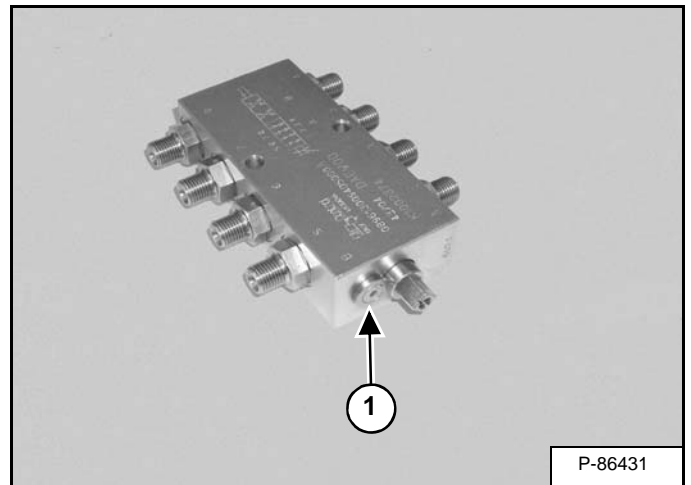
Remove the set screw (Item 1) [Figure 20-100-3].

Figure 20-100-4



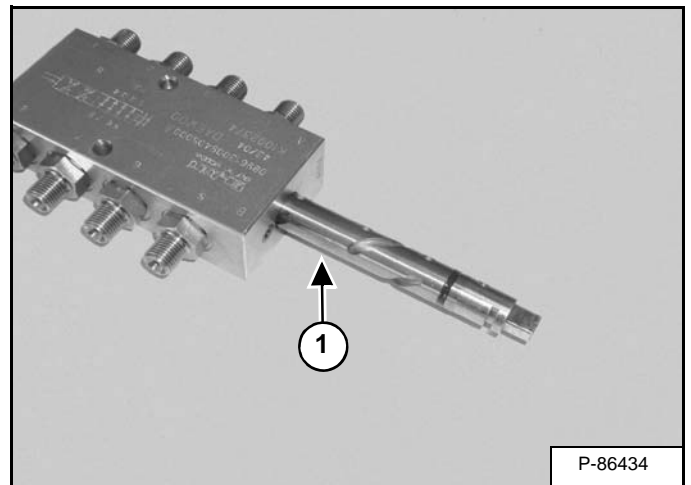
Remove the spring (Item 1) and ball (Item 2) [Figure 20-100-4].

Figure 20-100-5



Remove the screw (Item 1) [Figure 20-100-5] and washer.

Figure 20-100-6

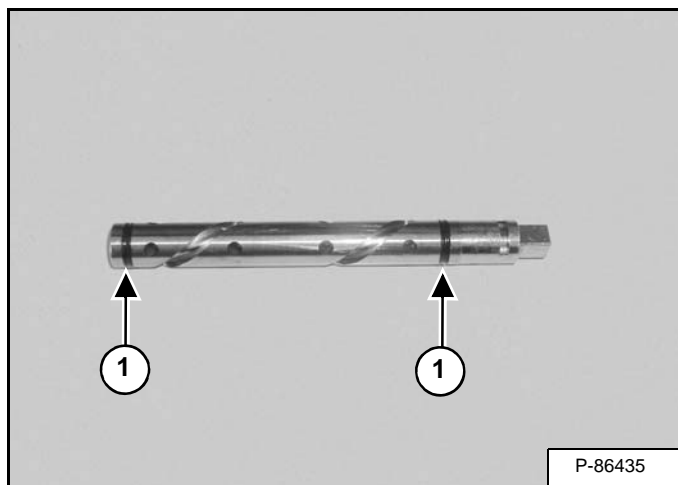


Remove the spool (Item 1) [Figure 20-100-6] from the valve body.

CONTROL PATTERN SELECTOR VALVE (CONT'D)

Disassembly (Cont'd)

Figure 20-100-7



Remove the U seal (Item 1) [Figure 20-100-7] from both ends of the spool.

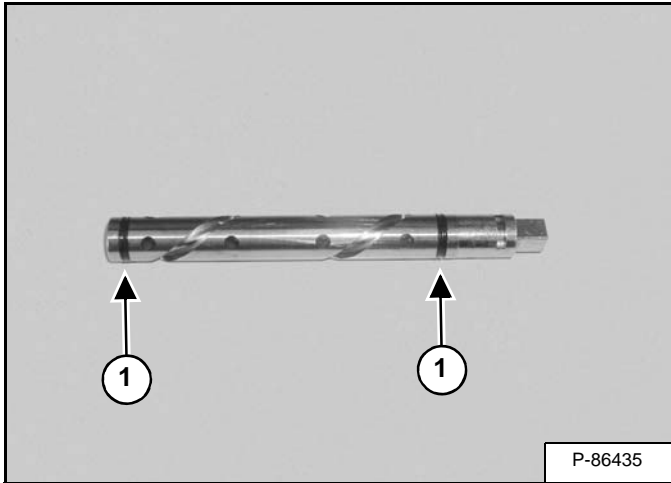
CONTROL PATTERN SELECTOR VALVE (CONT'D)

Assembly

Clean all parts in solvent and dry with compressed air. Inspect all parts for wear and damage. Replace any worn or damaged part.

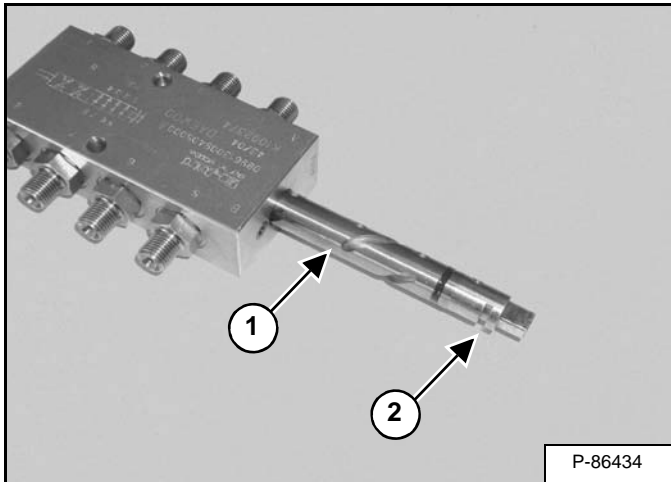
Always install new seals and O-rings. Lubricate all seals and O-rings with clean hydraulic fluid before installation.

Figure 20-100-8



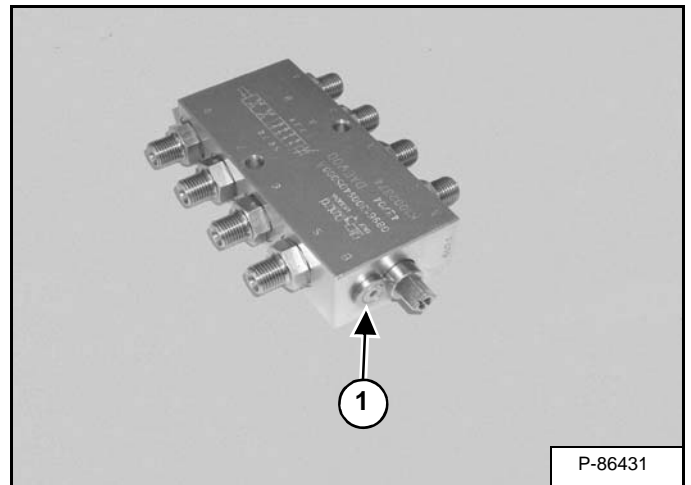
Install the U seal (Item 1) [Figure 20-100-8] on both ends of the spool.

Figure 20-100-9



Apply oil to and install the spool (Item 1) [Figure 20-100-9] in the valve body.

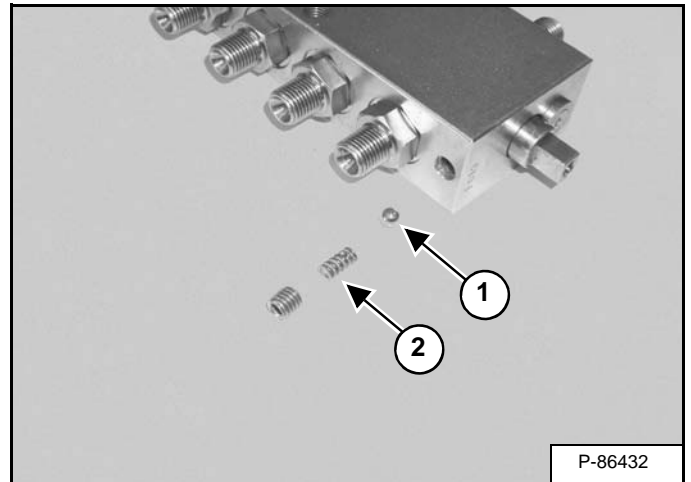
Figure 20-100-10



Install the washer and screw (Item 1) [Figure 20-100-10].

NOTE: The washer must engage the slot (Item 2) [Figure 20-100-9] in the spool.

Figure 20-100-11



Apply a light coat of grease to and install the ball (Item 1). Install the spring (Item 2) [Figure 20-100-11].