

## GENERAL

### Bank Angle Sensor

See Figure 4-63. A Code 44 occurs when the bank angle sensor voltage is outside the normal operating range of 0.6-1.1 volts. This may be caused by:

- Short to ground in harness between sensor and electronic control module.
- Short to voltage in harness between sensor and electronic control module.
- Failed sensor.

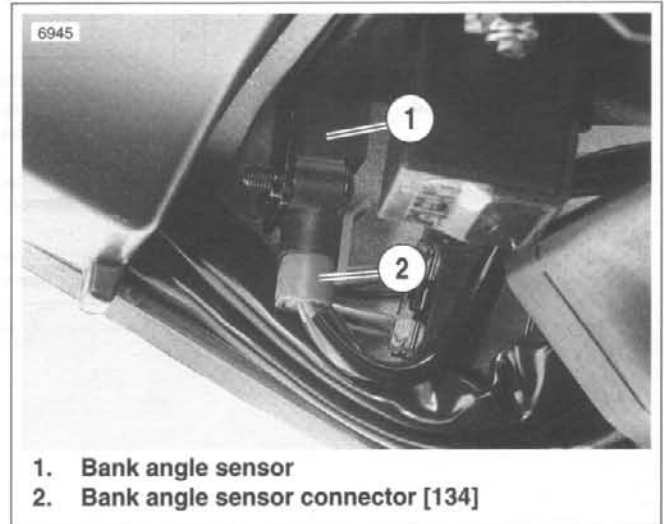
If this code occurs, the engine may stop running. The engine may still be restarted and ridden to the dealership for repair.

## DIAGNOSTICS

### Diagnostic Notes

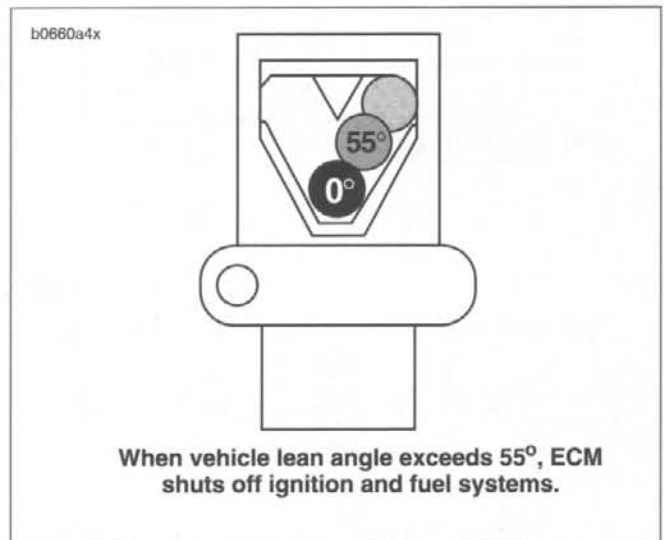
The reference numbers below correlate with the circled numbers on the Code 44 flow charts.

1. Use HARNESS CONNECTOR TEST KIT (Part No. HD-41404), gray pin probes and patch cord.
2. Connect BREAKOUT BOX (Part No. HD-42682) to ECM. See 4.6 BREAKOUT BOX.



1. Bank angle sensor  
2. Bank angle sensor connector [134]

Figure 4-63. Bank Angle Sensor



When vehicle lean angle exceeds 55°, ECM shuts off ignition and fuel systems.

Figure 4-64. Bank Angle Sensor Operation

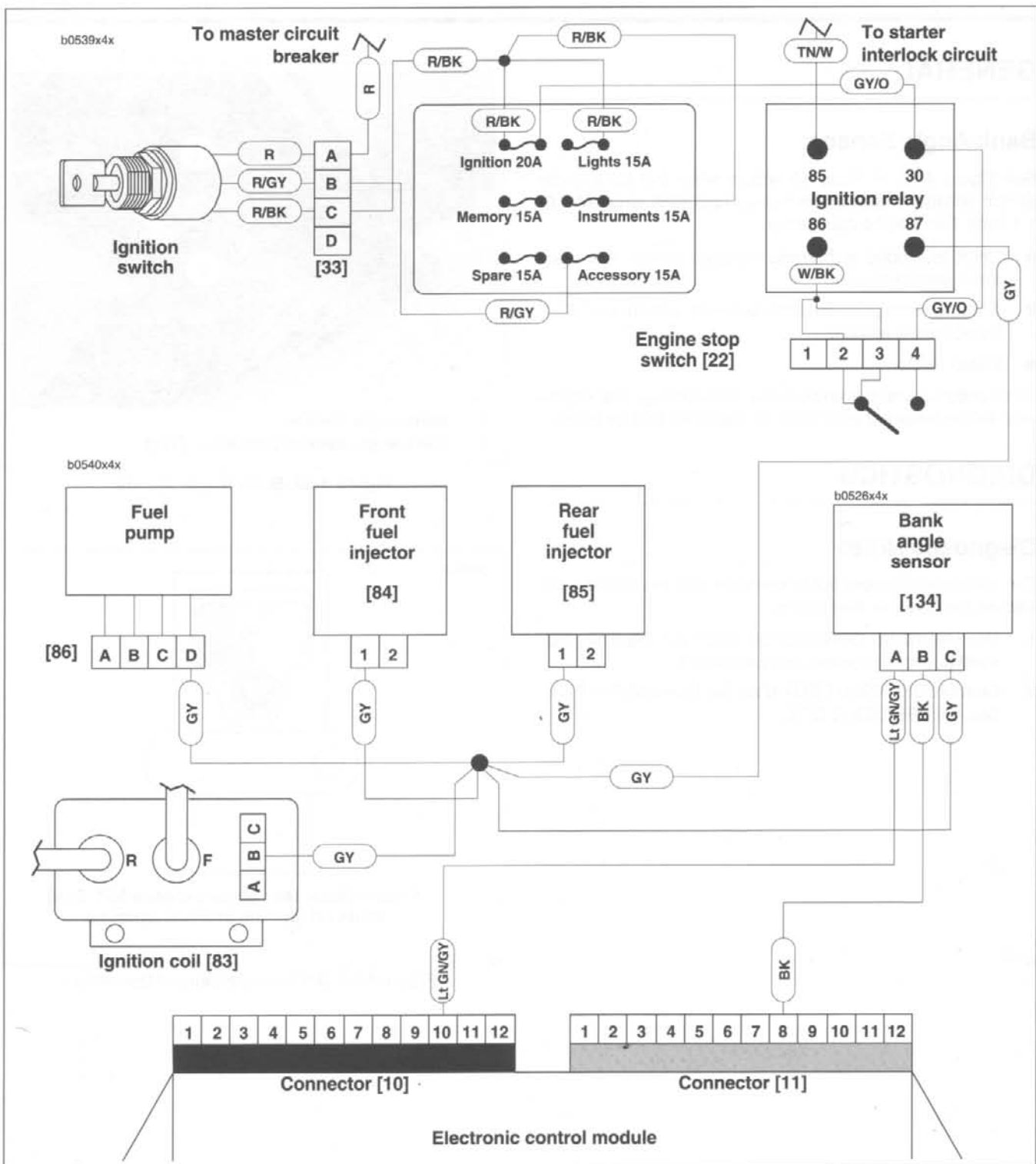
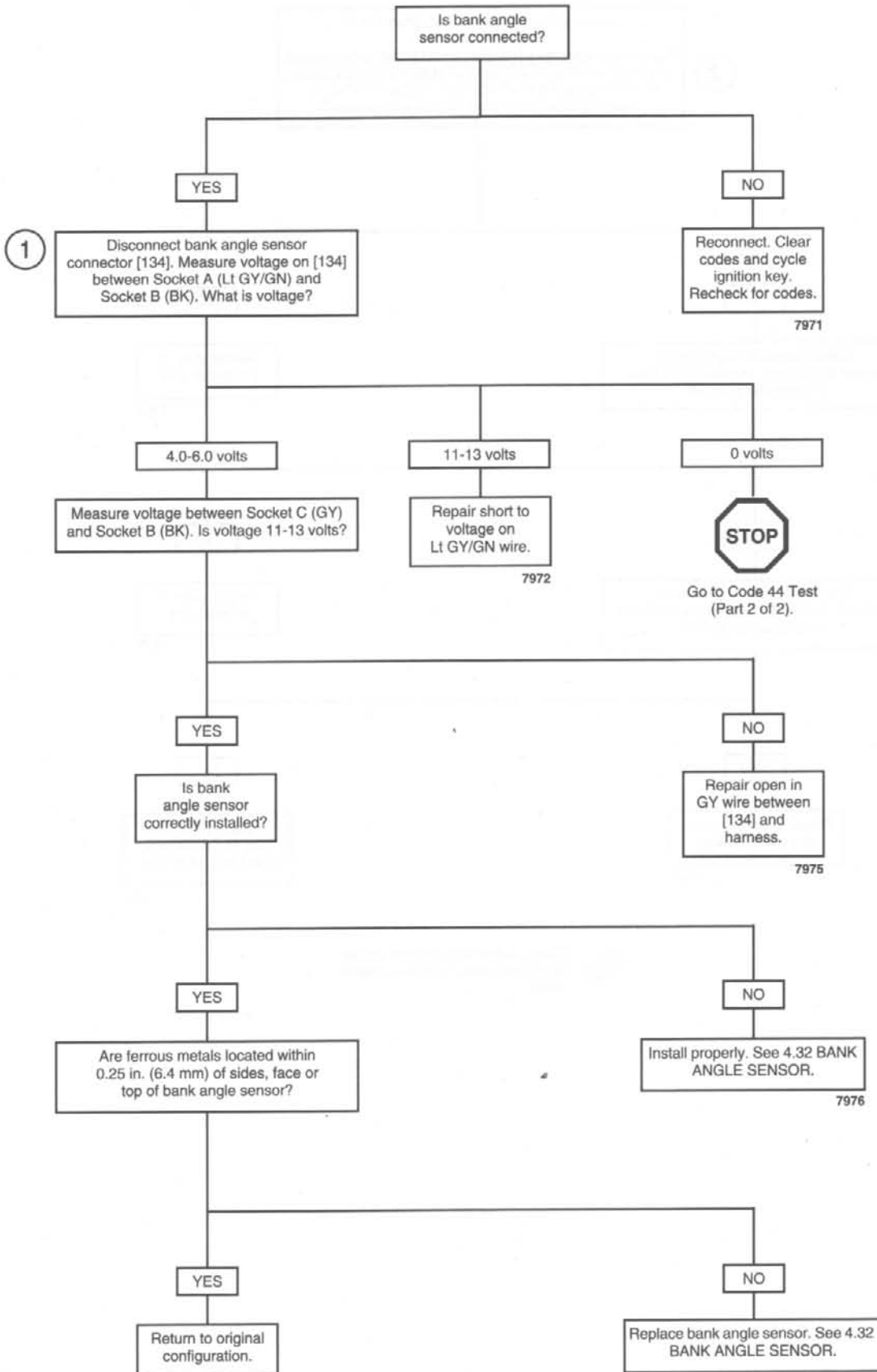


Figure 4-65. Bank Angle Sensor Circuit

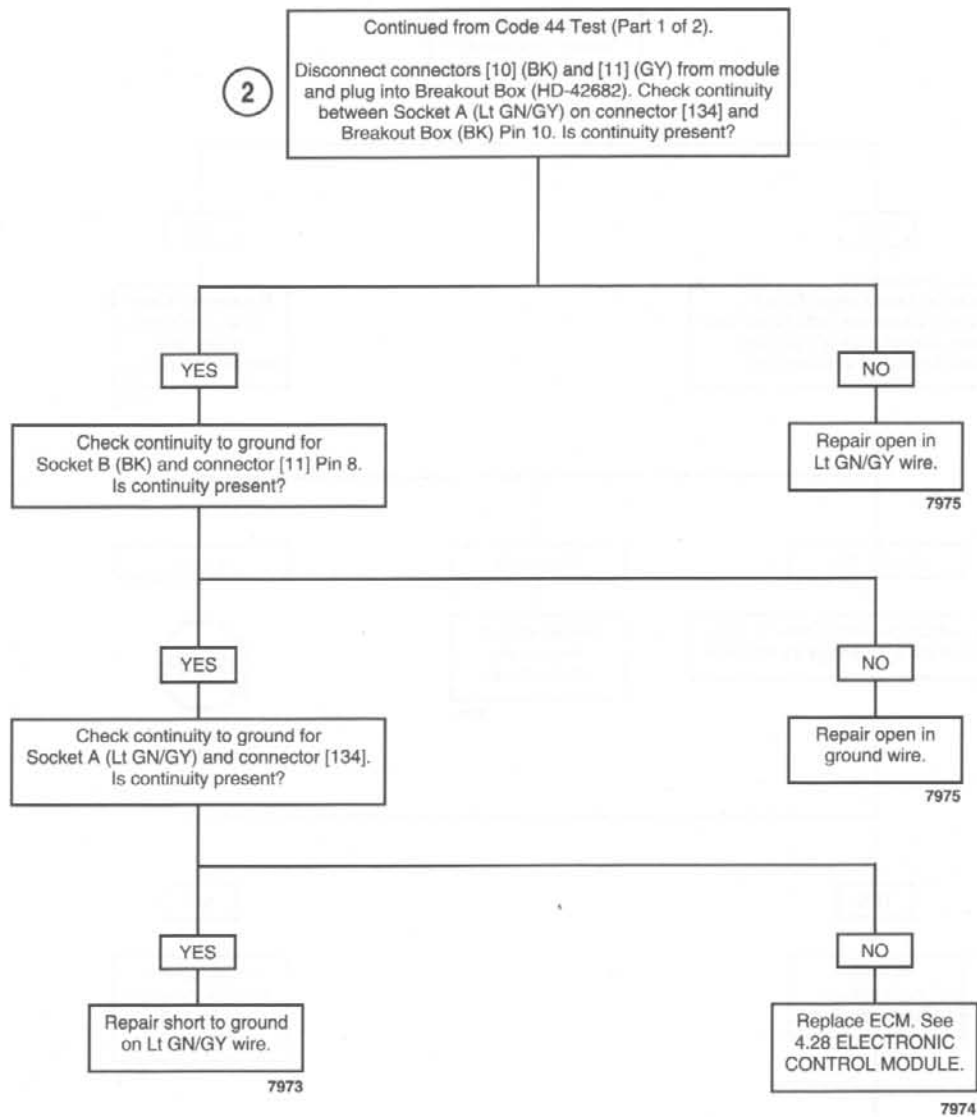
Table 4-25. Wire Harness Connectors in Figure 4-65.

NO.	DESCRIPTION	TYPE	LOCATION
[10]	ECM (black)	12-place Deutsch	under seat
[134]	Bank angle sensor	3-place Packard	under tail section, left side

# Code 44 Test (Part 1 of 2)



## Code 44 Test (Part 2 of 2)



Clear codes and confirm proper operation with no check engine lamp.