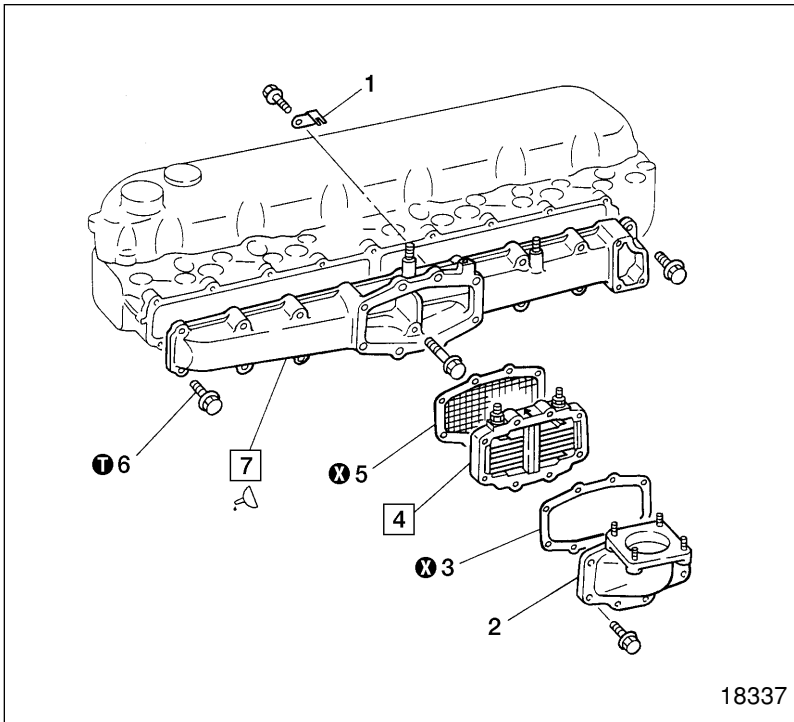


# INTAKE MANIFOLD



## ● Disassembly sequence

- 1 Earth plate
- 2 Coupler
- 3 Gasket
- 4 Air heater
- 5 Gasket
- 6 Bolt
- 7 Intake manifold

⊗ : Non-reusable part

## ● Reassembly sequence

Reverse the order of removal.

## ⓘ Tightening torque

Unit: N·m (kgf·m) [lbf·ft]

Location	Parts to be tightened	Tightening torque	Remarks
6	Bolt (for mounting intake manifold)	23 (2.37) [17.0]	–

## △ Sealant

Location	Points of application	Kinds	Quantity
7	Apply to cylinder head mounting surface of the intake manifold	THREE BOND 1207B	As required