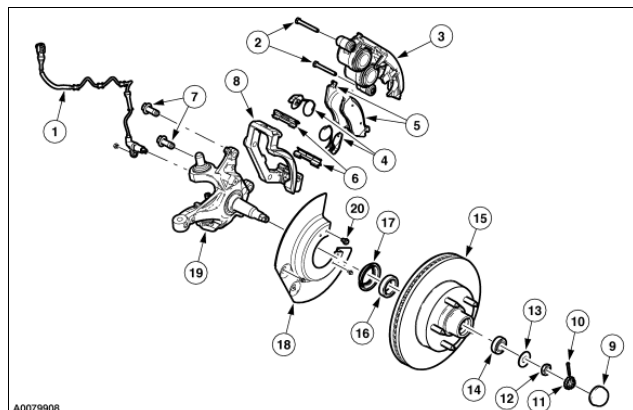
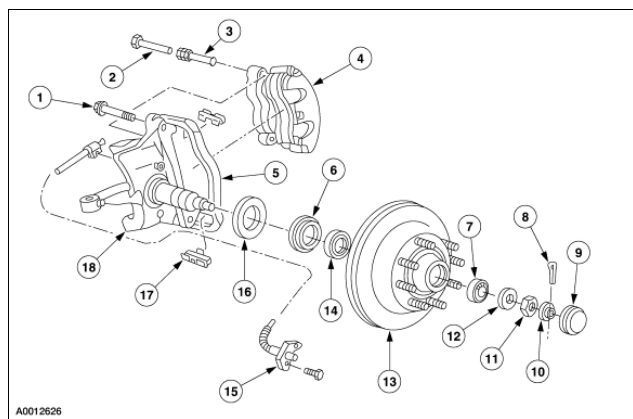


**Front Disc Brake**  [Printable View \(222 KB\)](#)**Front Disc Brake Components E-150**

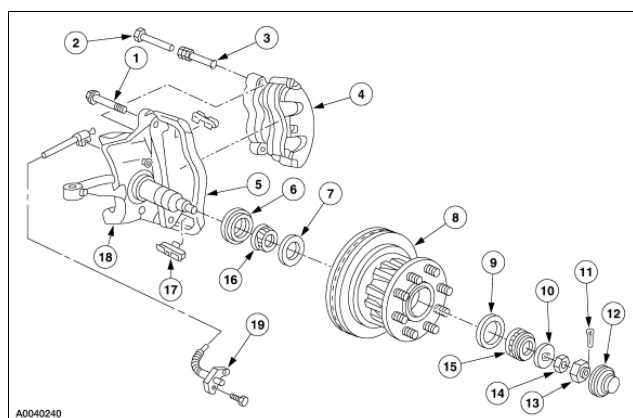
Item	Part Number	Description
1	2C204	Front brake anti-lock sensor
2		Disc brake caliper bolt
3	2B120	Disc brake caliper
4	14586	Disc brake pad retaining springs
5	2019	Front disc pads
6	2B164	Disc brake pad anti-rattle clip
7	N811816-S100	Disc brake caliper anchor bracket bolts
8	1458	Disc brake caliper anchor bracket
9	1131	Hub grease cap
10	N642569-S36	Cotter pin
11	390622-S	Nut retainer
12	374504-S100	Spindle nut
13	1195	Front wheel outer bearing retainer washer
14	1216	Front wheel bearing/cup
15	1102	Brake disc and hub
16	1201	Front wheel bearing/cup
17	1190	Grease seal
18	2K005	Backing plate
19	3105	Front wheel spindle
20	N611171-S426	Backing plate screw

**Front Disc Brake Components E-250, E-350, Single Rear Wheel**



Item	Part Number	Description
1	N807794-S60	Anchor bracket-to-spindle bolt
2	N601797-S2	Disc brake caliper bolt
3	2C150	Caliper bolt sleeve
4	2B120	Disc brake caliper
5	2B292	Front disc brake caliper anchor plate
6	1190	Wheel hub grease seal
7	1216	Front wheel bearing
8	N642569-S36	Cotter pin
9	1131	Hub grease cap
10	390622-S	Nut retainer
11	374504-S100	Spindle nut
12	1195	Front wheel outer bearing retainer washer
13	1102	Brake disc and hub
14	1201	Bearing cone and roller
15	2C204	Front brake anti-lock sensor
16	2B160	Front brake splash shield gasket
17	2B164	Disc brake pad anti-rattle clip
18	3105	Front wheel spindle

**Front Disc Brake Components E-350, E-450 and Dual Rear Wheel**



Item	Part Number	Description
1	N807794-S60	Anchor bracket-to-spindle bolt
2	N601797-S2	Disc brake caliper bolt
3	2C150	Caliper bolt sleeve
4	2B120	Disc brake caliper
5	2B292	Front disc brake caliper anchor plate
6	1190	Wheel hub grease seal
7	1217	Bearing cup, inner
8	1102	Brake disc and hub (dual rear wheel)
9	4222	Bearing cup, outer
10	1195	Front wheel outer bearing retainer washer
11	N642569-S36	Cotter pin
12	1131	Hub grease cap
13	374536-S	Nut retainer
14	374504-S100	Spindle nut
15	1216	Front wheel bearing (outer)
16	1216	Front wheel bearing (inner)
17	2B164	Disc brake pad anti-rattle clip
18	3105	Front wheel spindle
19	2C204	Front brake anti-lock sensor

The brake disc and hub is an integrally cast assembly.

The disc brake caliper:

- bolts to the front disc brake caliper anchor plate, which bolts to the front wheel spindle.
- is a pin slider, dual piston type.

The caliper housing has a fluid inlet at the center of the bore. A square section seal fitted into an annular groove in the caliper bore seals against hydraulic pressure, while rubber boots seal the caliper pistons and caliper bore from contamination.

The pads are:

- contained within the front disc brake caliper anchor plate.
- held to the front disc brake caliper anchor plate abutments by brake disc anti-rattle clips.



**Front Disc Brake**  [Printable View \(7 KB\)](#)

Refer to [Section 206-00](#) .

---

**Brake Pads**  [Printable View \(130 KB\)](#)

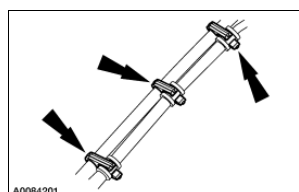
## Material

Item	Specification
Silicone Brake Caliper Grease and Dielectric Compound XG-3-A	ESE-M1C171-A

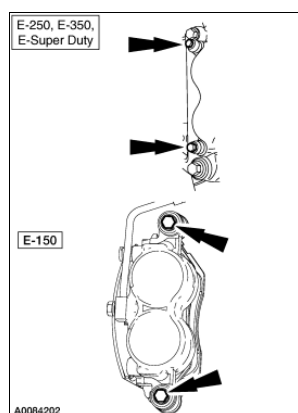
**Removal**

**⚠ WARNING:** Brake fluid contains polyglycol ethers and polyglycols. Avoid contact with eyes. Wash hands thoroughly after handling. If brake fluid contacts eyes, flush eyes with running water for 15 minutes. Get medical attention if irritation persists. If taken internally, drink water and induce vomiting. Get medical attention immediately. Failure to follow these instructions may result in personal injury.

- If new pads are to be installed, provide space for the brake fluid displaced from the disc brake caliper.
  - Remove and discard enough brake fluid from the brake master cylinder to allow room for the brake fluid displaced when the caliper piston is pressed to the bottom of the caliper bore.
- Remove the tire and wheel assembly. For additional information, refer to [Section 204-04](#).
- Release the speed sensor wiring from the front brake hose.



- Remove the two disc brake caliper bolts.

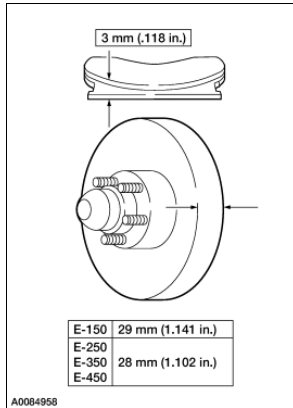


- ⚠ CAUTION:** Do not allow the disc brake caliper to hang from the front brake hose. Use wire to support the disc brake caliper from a convenient underbody component.

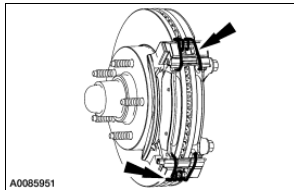
Remove and support the disc brake caliper.

6. Inspect:

- the disc brake caliper for brake fluid leakage. If the disc brake caliper is leaking, it must be rebuilt or installed new.
- the pad thickness. Do not install pads worn to or past the specified thickness above the metal backing plate or rivets.
- the pads for contamination. Do not put oil- or grease-contaminated pads on vehicle.
- the brake disc and hub for minimum thickness. Install a new brake disc and hub if worn to or below minimum thickness.



7. On E-150, remove the brake pad retaining springs.



8. Remove the brake pads from the brake caliper anchor bracket.

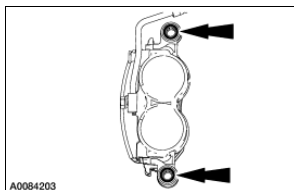
**Installation**

1. **NOTE:** Bottoming of the caliper piston is not necessary if reusing the original pads.

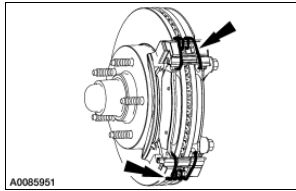
If installing new pads, use a suitable tool and a pad to press the caliper piston to the bottom of the caliper bore.

2. **⚠ CAUTION:** To prevent deterioration of the caliper sleeve boots, do not use petroleum-based lubricant.

Fill the rubber caliper sleeve boots with caliper grease.

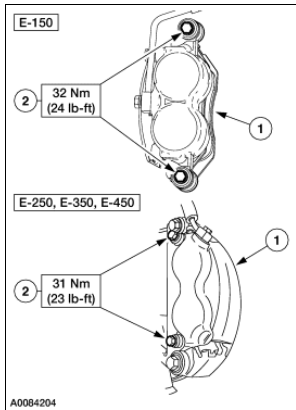


3. Install the brake pads.
4. On E-150, install the brake pad retaining springs.

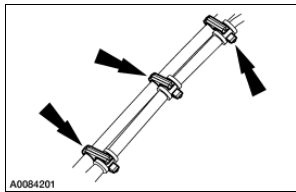


5. Install the disc brake caliper.

1. Position the disc brake caliper in the front disc brake caliper anchor plate (E-150 E-450).
2. Install and tighten the disc brake caliper bolts.



6. Attach the speed sensor wiring to the front brake hose.



7. Install the tire and wheel assembly. For additional information, refer to [Section 204-04](#) .



**Brake Caliper**  [Printable View \(116 KB\)](#)

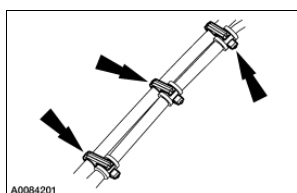
## Material

Item	Specification
High Performance DOT 3 Motor Vehicle Brake Fluid PM-1 (Canada CPM-1)	ESA-M6C25-A

**Removal**

**⚠ WARNING:** Brake fluid contains polyglycol ethers and polyglycols. Avoid contact with eyes. Wash hands thoroughly after handling. If brake fluid contacts eyes, flush eyes with running water for 15 minutes. Get medical attention if irritation persists. If taken internally, drink water and induce vomiting. Get medical attention immediately. Failure to follow these instructions may result in personal injury.

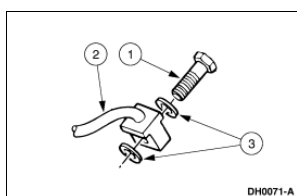
1. Remove the tire and wheel assembly. For additional information, refer to [Section 204-04](#).
2. Release the speed sensor wiring from the front brake hose.



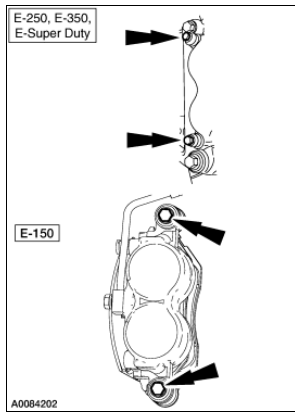
3. **⚠ CAUTION:** To prevent contamination and reduce air entry, always plug a disconnected front brake hose.

Disconnect the front brake hose from the disc brake caliper.

1. Remove the flow bolt.
2. Disconnect the front brake hose.
3. Remove and discard the copper washers.



4. Remove the two disc brake caliper bolts.

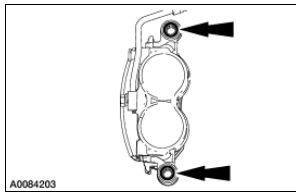


5. Remove the disc brake caliper from the front disc brake caliper anchor plate.
6. Inspect the disc brake caliper for brake fluid leakage. If the disc brake caliper is leaking, it must be rebuilt or installed new.

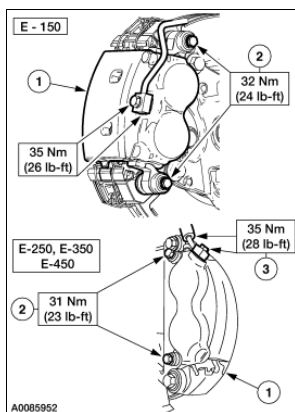
### Installation

1. **⚠ CAUTION:** To prevent deterioration of the caliper sleeve boots, do not use petroleum-based lubricant.

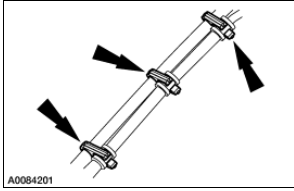
Fill the rubber caliper sleeve boots with caliper grease.



2. Install the disc brake caliper and the front brake hose.
  1. Position the disc brake caliper in the front disc brake caliper anchor plate.
  2. Install and tighten the disc brake caliper bolts.
  3. Using new copper washers, install the front brake hose and the bolt.



3. Attach the speed sensor wiring to the front brake hose.



4. Bleed the brake system. For additional information, refer to [Section 206-00](#) .
  5. Install the wheel and tire assembly. For additional information, refer to [Section 204-04](#) .
  6. Inspect the brake system operation.
-