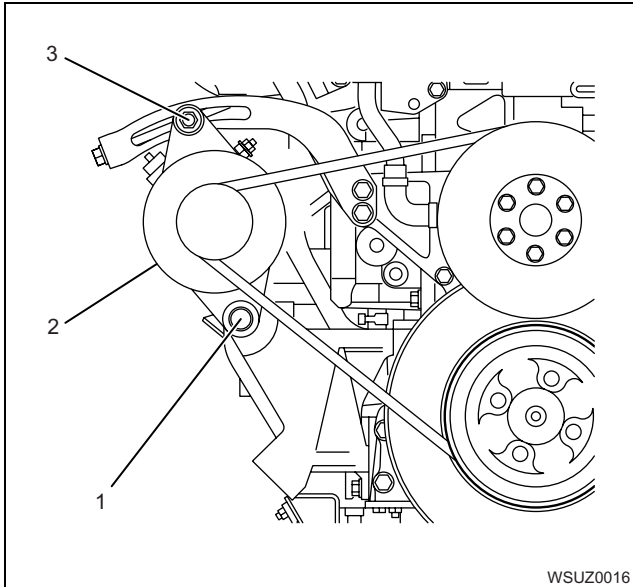


Removal

1. Remove the generator.
 - Loosen the through bolt (1) and adjusting lock nut (3).
 - Remove the V-belt.
 - Remove the generator ASM (2).



2. Remove the starter.

Installation

1. Install the starter.
 - Tighten the ground cable together.

Tightening torque:

137.3 N·m {14 kg·m/101.3 lb·ft}

2. Install the generator.

- Install the generator (2) temporarily, and then install the V-belt.
- Adjust the tension of the V-belt.
 - Adjust the belt deflection when its middle part is pressed with approx. 98 N {10 kg/22 lb} as follows.

Deflection:

12 — 14 mm {0.47 — 0.55 in}

- Tighten the adjusting lock nut (3) and the through bolt (1) with the specified torque.

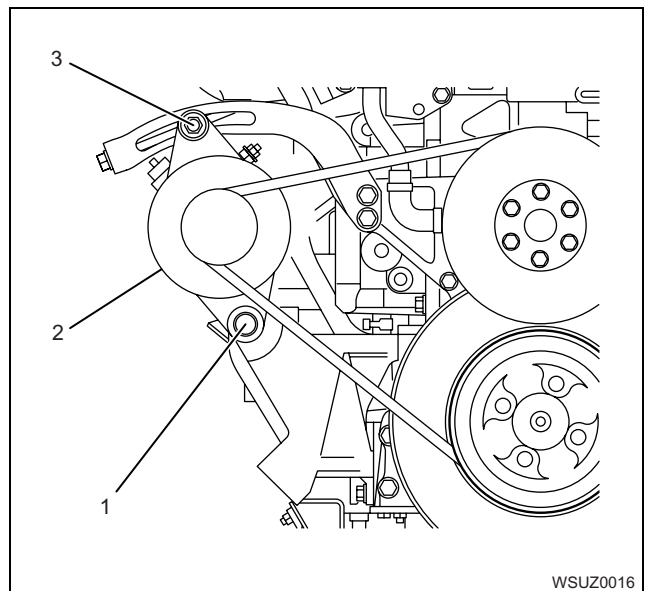
Tightening torque:

Through bolt: 156.5 N·m {16 kg·m/115 lb·ft}

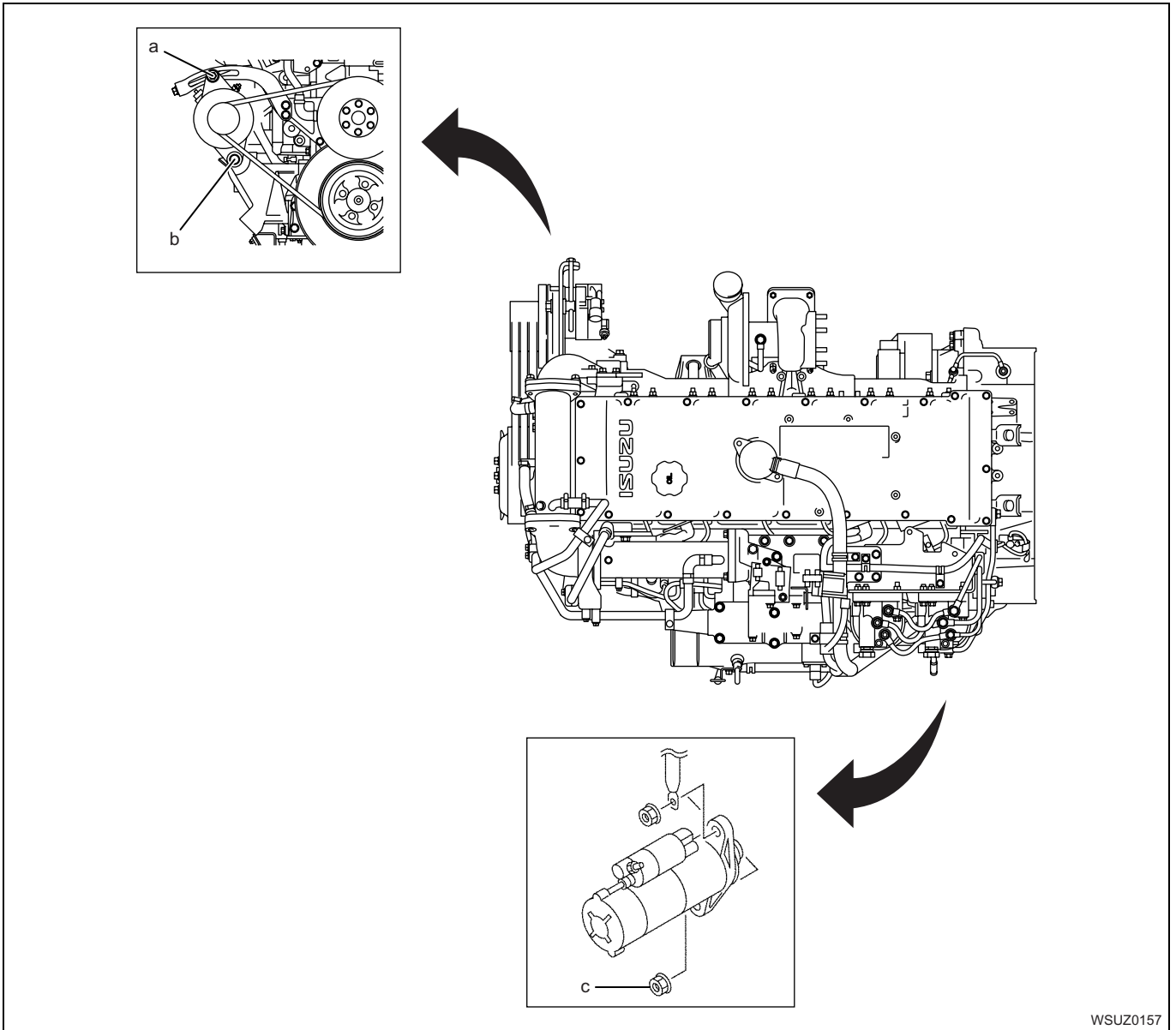
Lock nut: 92.9 N·m {9.5 kg·m/68.5 lb·ft}

Note:

- Make sure that the V-belt is fitted to the pulleys groove.
- Crank the engine for five rotations and check the tension of the belt again.



Torque Specifications



WSUZ0157

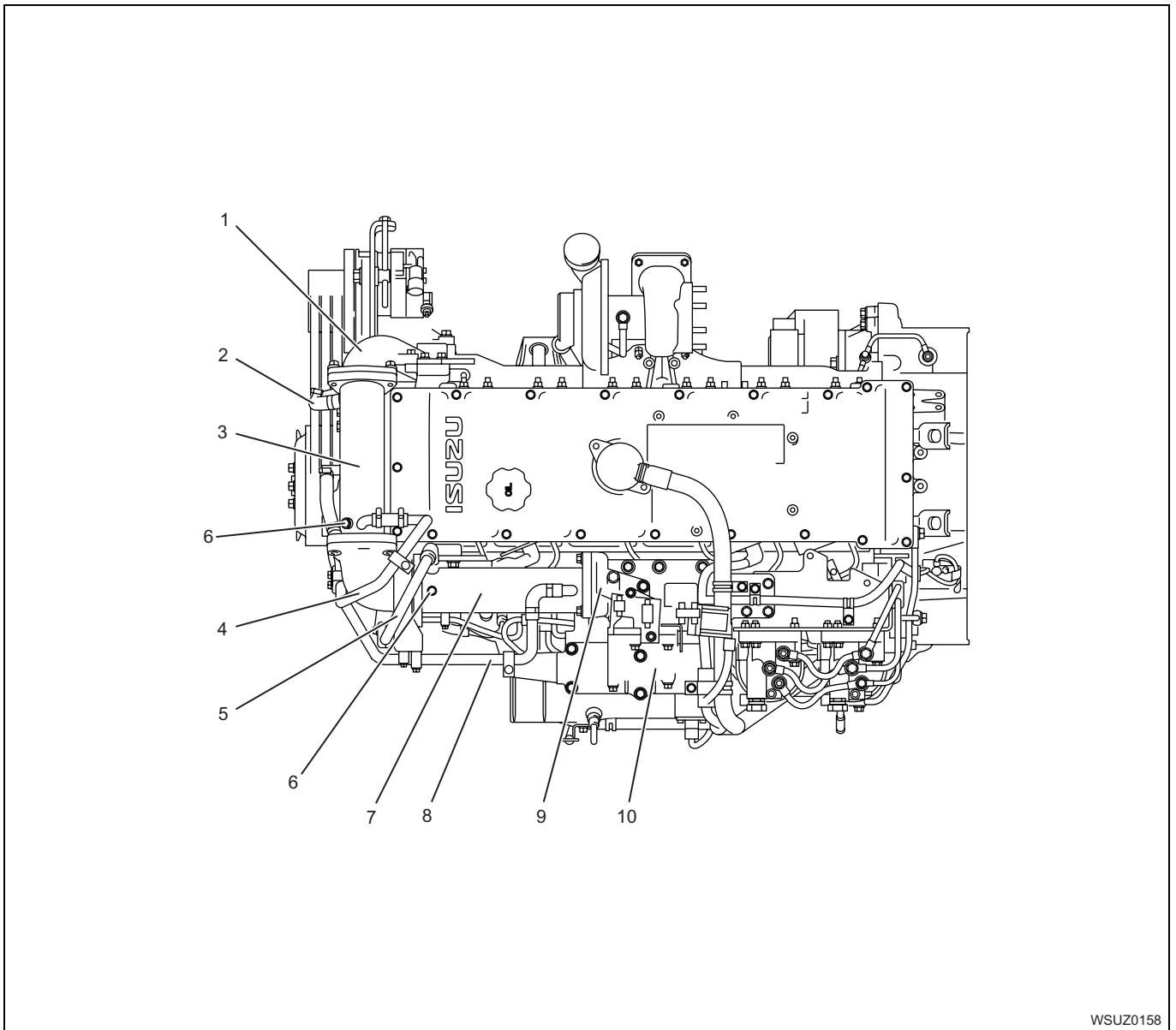
Name

- (a). 92.9 N·m {9.5 kg·m/68.5 lb·ft}
- (b). 156.5 N·m {16 kg·m/115.4 lb·ft}

- (c). 137.3 N·m {14 kg·m/101.3 lb·ft}

Engine Exterior Equipment

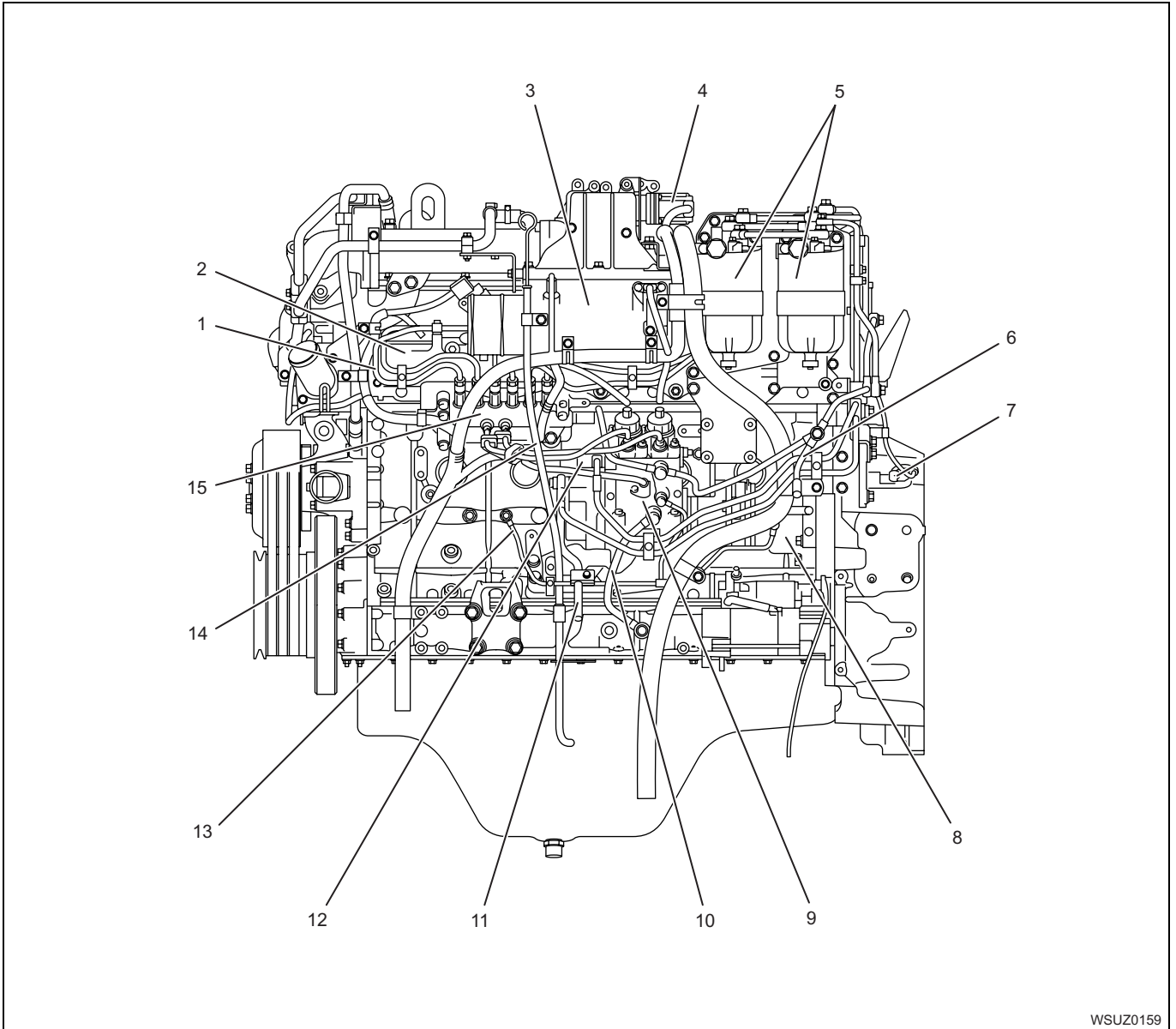
Components



WSUZ0158

Name

- | | |
|--|---|
| 1. EGR Duct C | 6. Air Bleed Plug (EGR Cooler) |
| 2. Water Feed Pipe (Exhaust Side EGR Cooler) | 7. EGR Cooler (Intake Side) |
| 3. EGR Cooler (Exhaust Side) | 8. Water Return Pipe (Intake Side EGR Cooler) |
| 4. Water Return Pipe (Exhaust Side EGR Cooler) | 9. EGR Duct B |
| 5. Water Feed Pipe (Intake Side EGR Cooler) | 10. EGR Duct A |

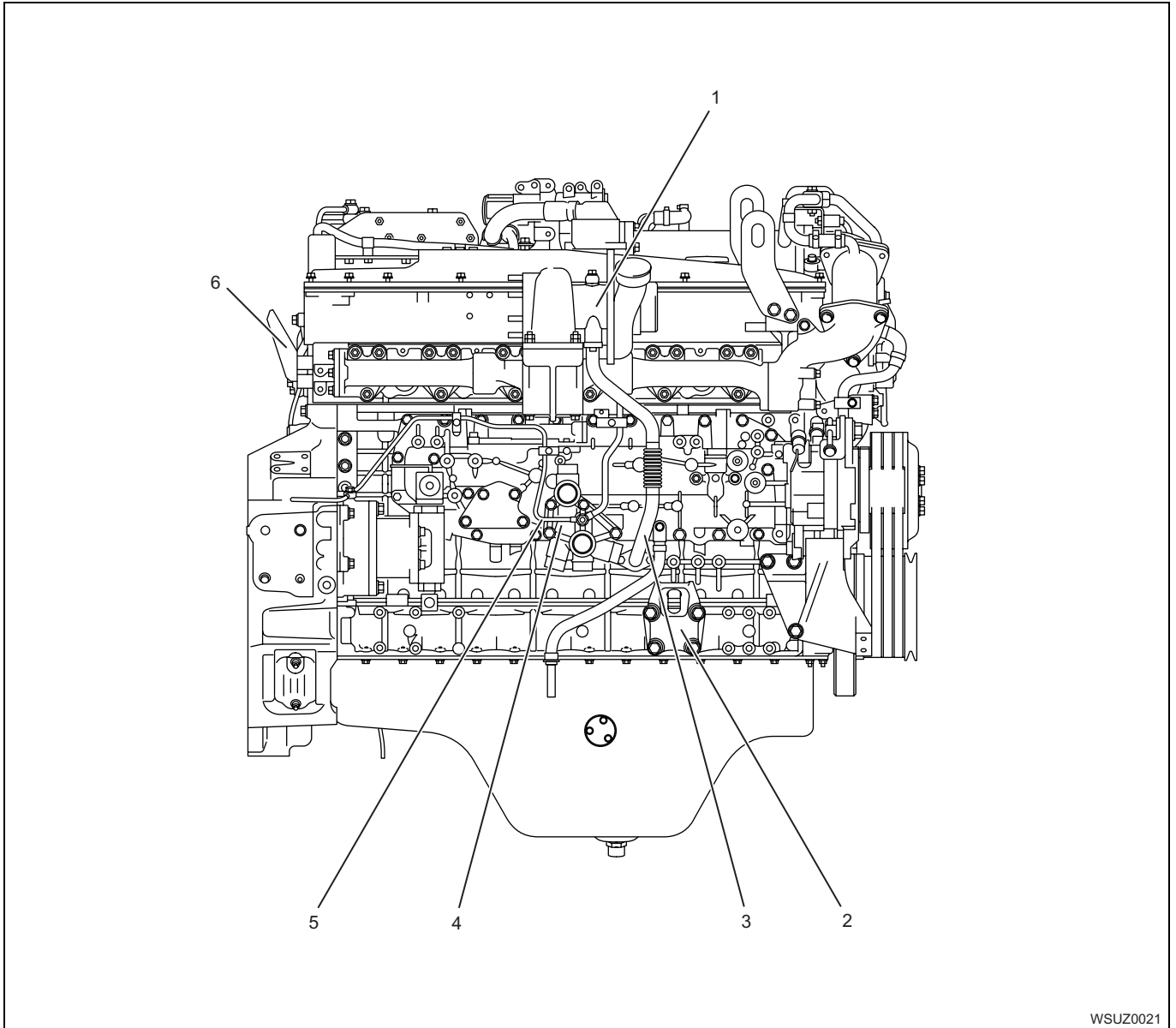


WSUZ0159

Name

- | | |
|--------------------------|-----------------------------|
| 1. Injection Pipe | 9. Supply Pump |
| 2. Inlet Cover | 10. Oil Return Pipe |
| 3. Inlet Duct | 11. Fuel Feed Pipe |
| 4. EGR Valve | 12. Fuel Temperature Sensor |
| 5. Fuel Filter | 13. Oil Feed Pipe |
| 6. Fuel Return Pipe | 14. Oil Level Guide Tube |
| 7. Crank Position Sensor | 15. Common Rail |
| 8. Bearing Case | |

1A-16 6UZ1 Engine Mechanical



WSUZ0021

Name

- | | |
|---------------------|---------------------|
| 1. Turbocharger | 4. Oil Port Cover |
| 2. Engine Foot (Ft) | 5. Oil Feed Pipe |
| 3. Oil Return Pipe | 6. Engine Foot (Rr) |