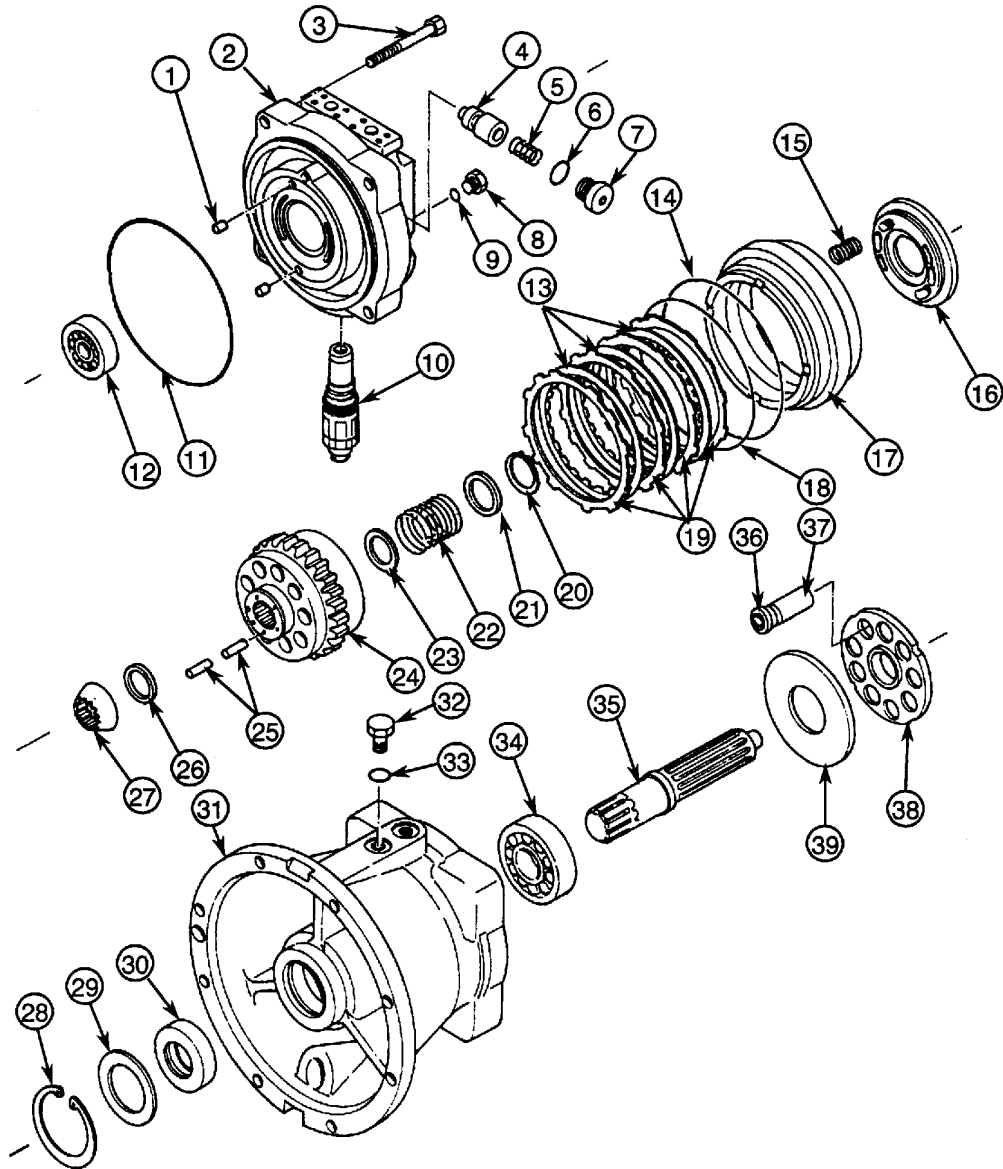


# UPPERSTRUCTURE / Swing Device

## ASSEMBLE SWING MOTOR



- |                                    |                           |                      |
|------------------------------------|---------------------------|----------------------|
| 1— Pin (2 Used)                    | 14— O-Ring                | 27— Bushing          |
| 2— Valve Casing                    | 15— Spring (24 Used)      | 28— Retaining Ring   |
| 3— Socket Bolt (4 Used)            | 16— Valve Plate           | 29— Plate            |
| 4— Poppet (2 Used)                 | 17— Brake Piston          | 30— Oil Seal         |
| 5— Spring (2 Used)                 | 18— O-Ring                | 31— Casing           |
| 6— O-Ring (2 Used)                 | 19— Center Plate (4 Used) | 32— Plug             |
| 7— Plug (2 Used)                   | 20— Retaining Ring        | 33— O-Ring           |
| 8— Plug                            | 21— Spacer                | 34— Bearing          |
| 9— O-Ring                          | 22— Spring                | 35— Shaft            |
| 10— Relief Valve Assembly (2 Used) | 23— Spacer                | 36— Shoe             |
| 11— O-Ring                         | 24— Rotor                 | 37— Plunger (9 Used) |
| 12— Bearing                        | 25— Push Rod (12 Used)    | 38— Retainer Plate   |
| 13— Friction Plate (3 Used)        | 26— Spacer                | 39— Thrust Plate     |

W107-02-06-097