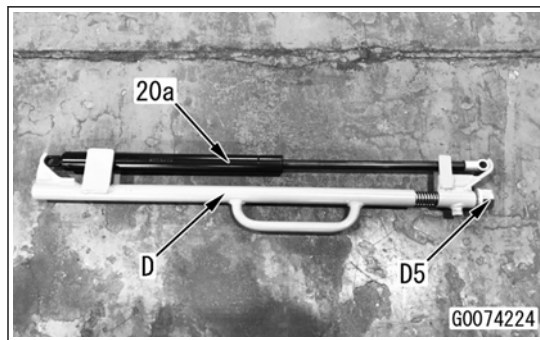


26. Install the installer (D) to the gas spring (20a).
27. Tighten the nut (D5), and adjust it for the length to become 589 mm.

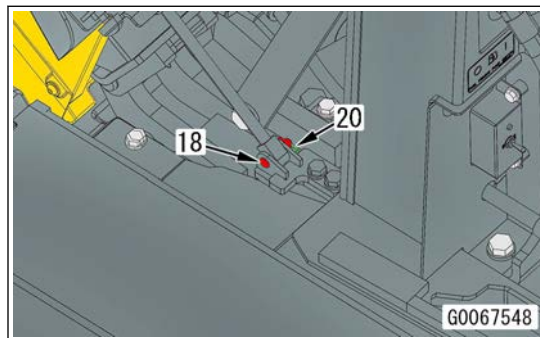


28. Install the gas spring (20a) with the pins (18) (2 pieces) and cotter pins (20) (2 pieces).

REMARK

Do the same work on the opposite side, too.


Tool: Needle-nose pliers

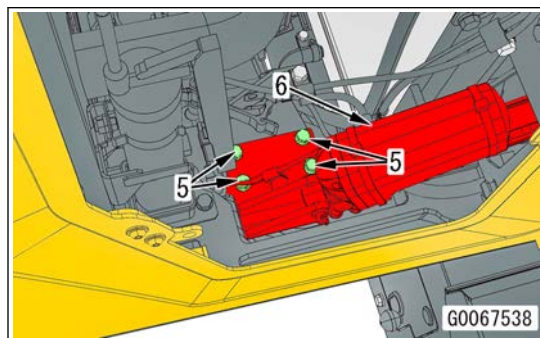


29. Connect the electric cylinder (6) with the bolts (5) (4 pieces).

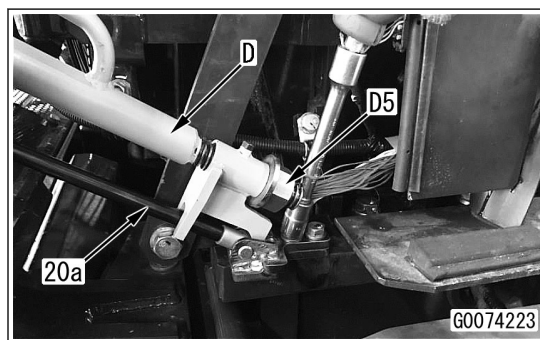
Tool: Ratchet handle, socket, torque wrench

Bolt (5): Width across flats 17 mm, M10

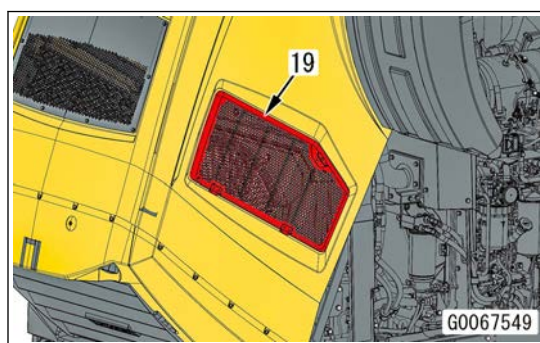
 Bolt (5): 59 to 74 Nm {6 to 7.5 kgm}



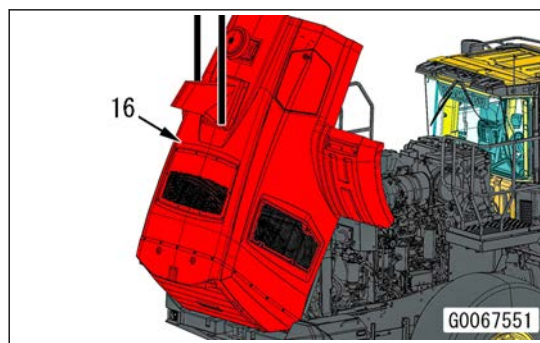
30. Loosen the nut (D5), and remove the installer (D).



31. Close the cover (19).



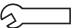
32. Lift the engine assembly (16), and close it.

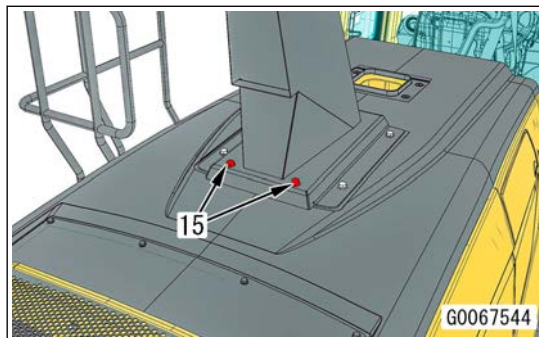


33. Remove the eyebolt (A) (2 pieces), and install the bolt (15) (2 pieces).

Tool: Ratchet handle, socket, torque wrench

Bolt (15): Width across flats 19 mm, M12


 Bolt (15): 98 to 123 Nm {10 to 12.5 kgm}

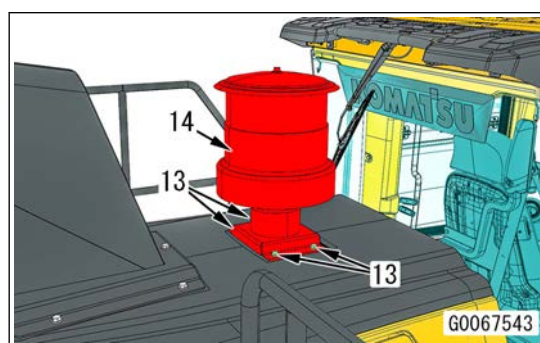


34. Install the bracket (14) with the bolts (13) (4 pieces).

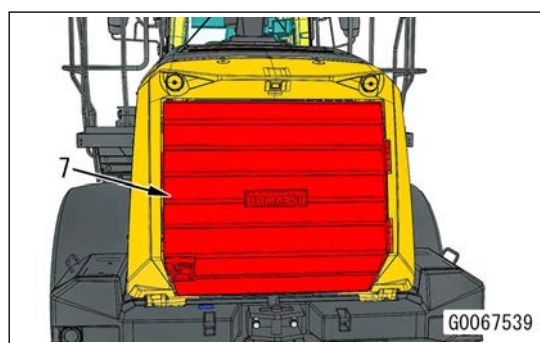
Tool: Ratchet handle, socket, torque wrench

Bolt (13): Width across flats 17 mm, M10

 Bolt (13): 59 to 74 Nm {6 to 7.5 kgm}



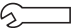
35. Open the grille assembly (7).



36. Install the pin (12) with the bolt (11).

Ratchet handle, socket, torque wrench

Bolt (11): Width across flats 17 mm, M10

 Bolt (11): 59 to 74 Nm {6 to 7.5 kgm}

