

REMOVAL

1. **DISCONNECT CABLE FROM NEGATIVE BATTERY TERMINAL**

CAUTION:

Wait at least 90 seconds after disconnecting the cable from the negative (-) battery terminal to prevent airbag and seat belt pretensioner activation.

2. **REMOVE SHIFT LEVER KNOB** (for Manual Transaxle)
3. **REMOVE REAR CONSOLE BOX** (See page [IP-26](#))

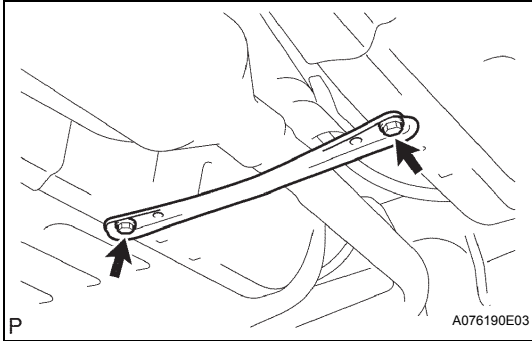
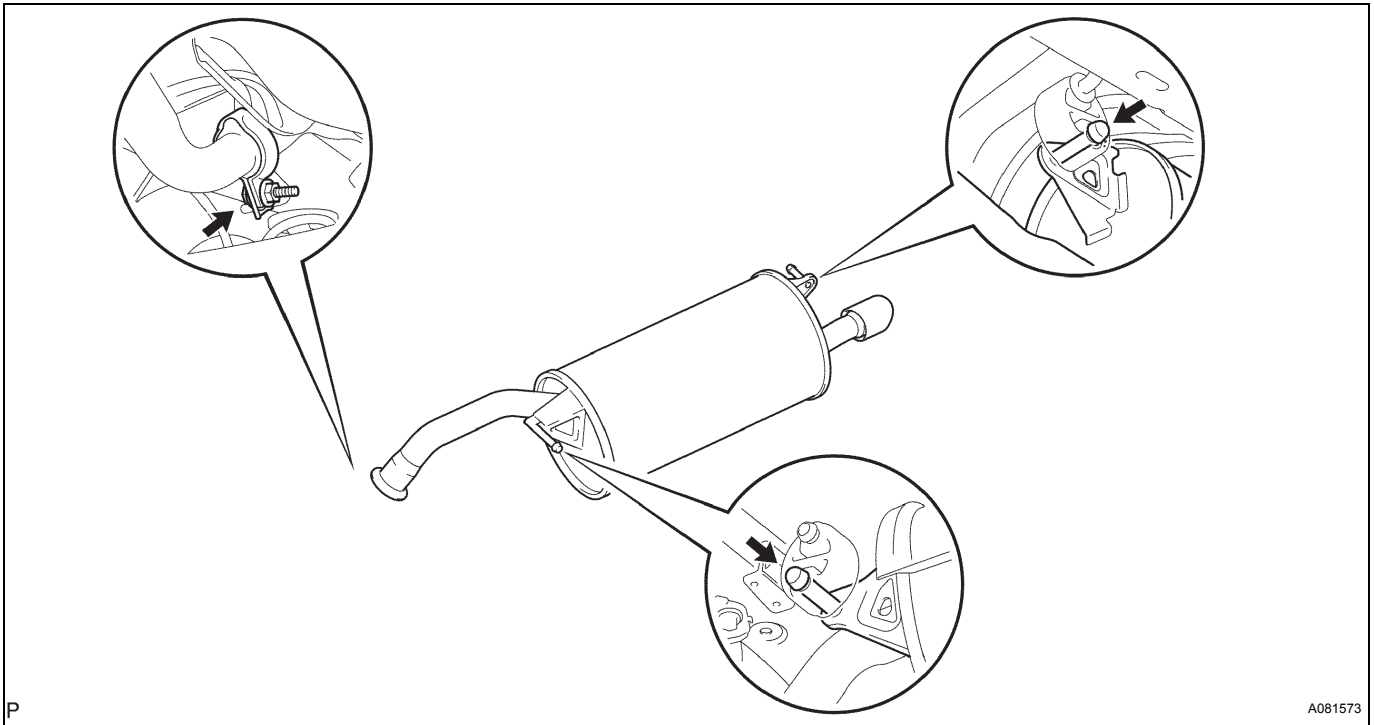
4. **REMOVE FRONT FLOOR PANEL BRACE**

(a) Remove the 2 bolts and floor panel brace.

5. **REMOVE TAILPIPE**

(a) Remove the bolt and clamp.

(b) Disconnect the 2 exhaust pipe supports, and remove the tailpipe and gasket.


EX


6. **REMOVE FRONT EXHAUST PIPE**

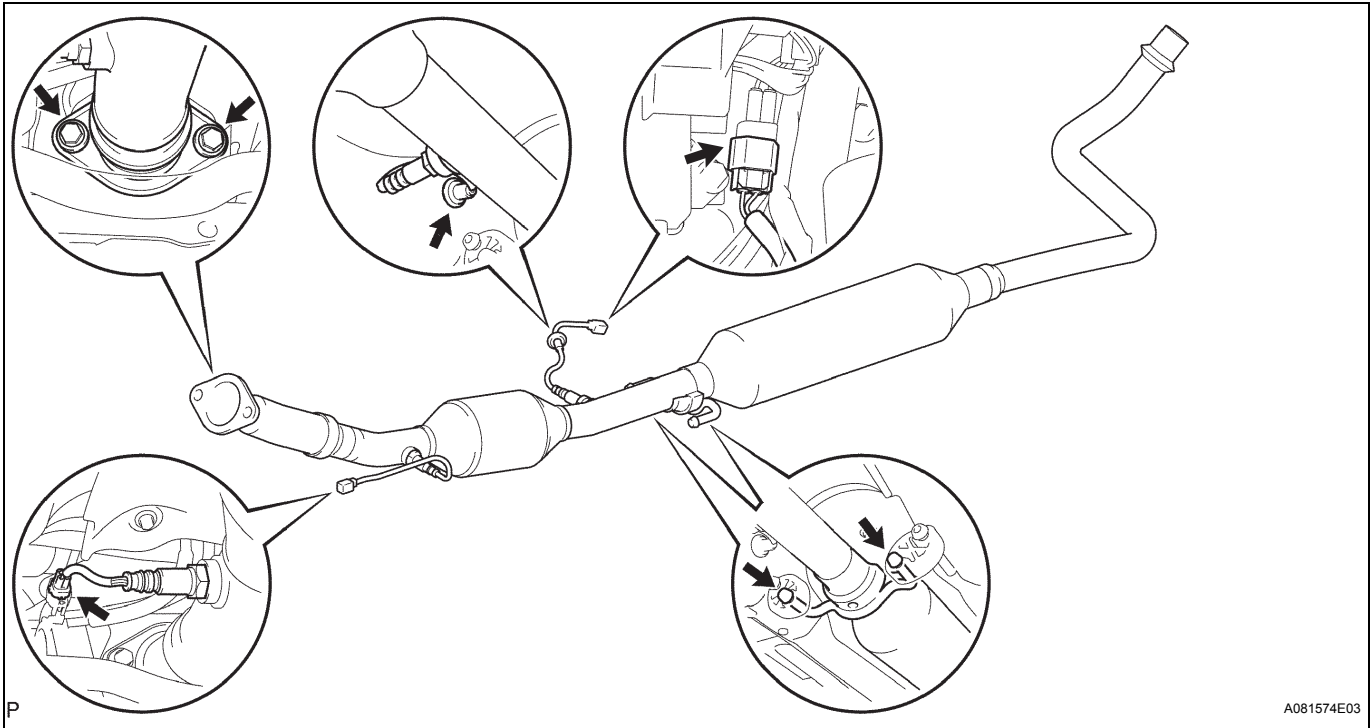
(a) Disconnect the 2 heated oxygen sensor connectors.

(b) Remove the grommet.

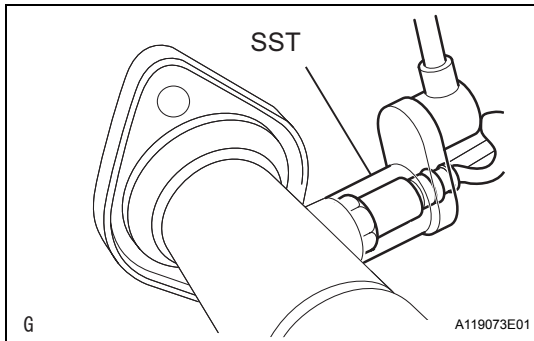
(c) Remove the 2 bolts and 2 compression springs.

(d) Disconnect the 2 exhaust pipe supports, and remove the front exhaust pipe.

(e) Remove the gasket from the exhaust manifold.



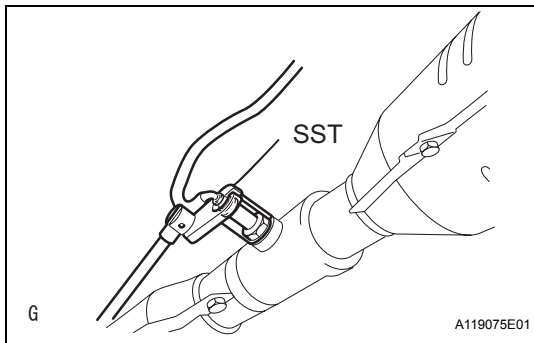
EX



7. REMOVE HEATED OXYGEN SENSOR (for Bank 1 Sensor 1)

(a) Using SST, remove the sensor from the front exhaust pipe.

SST 09224-00010



8. REMOVE HEATED OXYGEN SENSOR (for Bank 1 Sensor 2)

(a) Using SST, remove the sensor from the front exhaust pipe.

SST 09224-00010

INSTALLATION

1. INSTALL HEATED OXYGEN SENSOR (for Bank 1 Sensor 2)

- (a) Using SST, install the sensor to the front exhaust pipe.

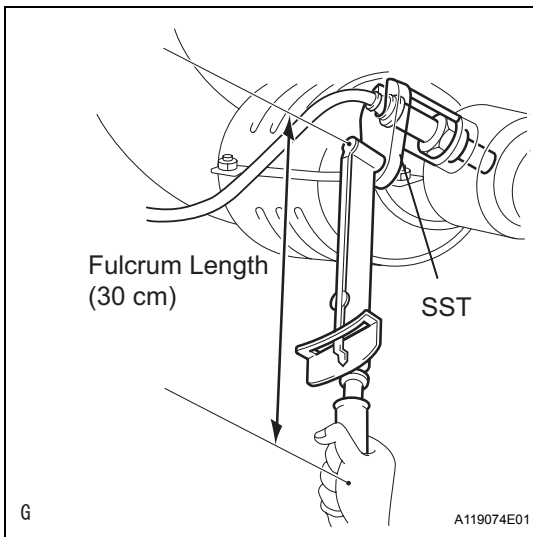
SST 09224-00010

Torque: 40 N*m (408 kgf*cm, 30 ft.*lbf) for use with SST

44 N*m (449 kgf*cm, 32 ft.*lbf) for use without SST

HINT:

Use a torque wrench with a fulcrum length of 30 cm (11.81 in.).



2. REMOVE HEATED OXYGEN SENSOR (for Bank 1 Sensor 1)

- (a) Using SST, install the sensor to the front exhaust pipe.

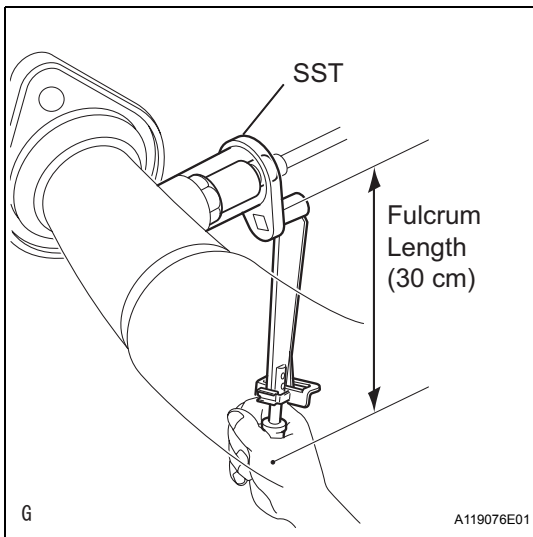
SST 09224-00010

Torque: 40 N*m (408 kgf*cm, 30 ft.*lbf) for use with SST

44 N*m (449 kgf*cm, 32 ft.*lbf) for use without SST

HINT:

Use a torque wrench with a fulcrum length of 30 cm (11.81 in.).



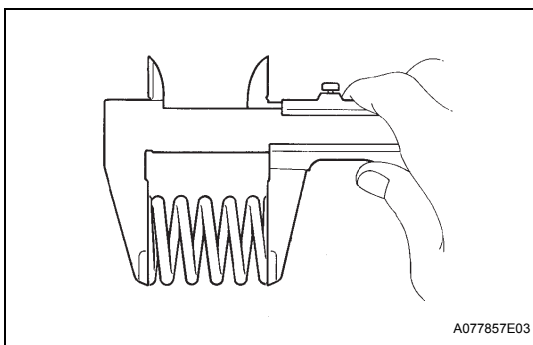
3. INSTALL FRONT EXHAUST PIPE

- (a) Using a vernier caliper, measure the free length of the compression spring.

Minimum length:

40.5 mm (1.594 in.)

If the length is less than the minimum, replace the compression spring.

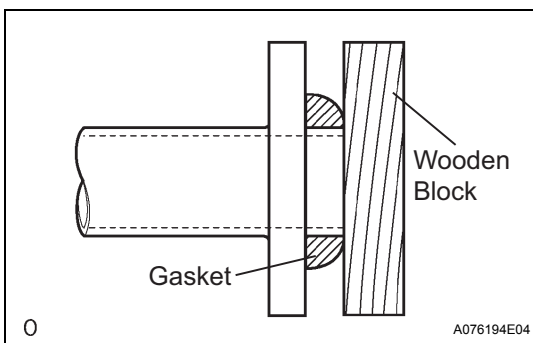


- (b) Using a plastic-faced hammer and wooden block, tap in a new gasket until its surface is flush with the exhaust manifold.

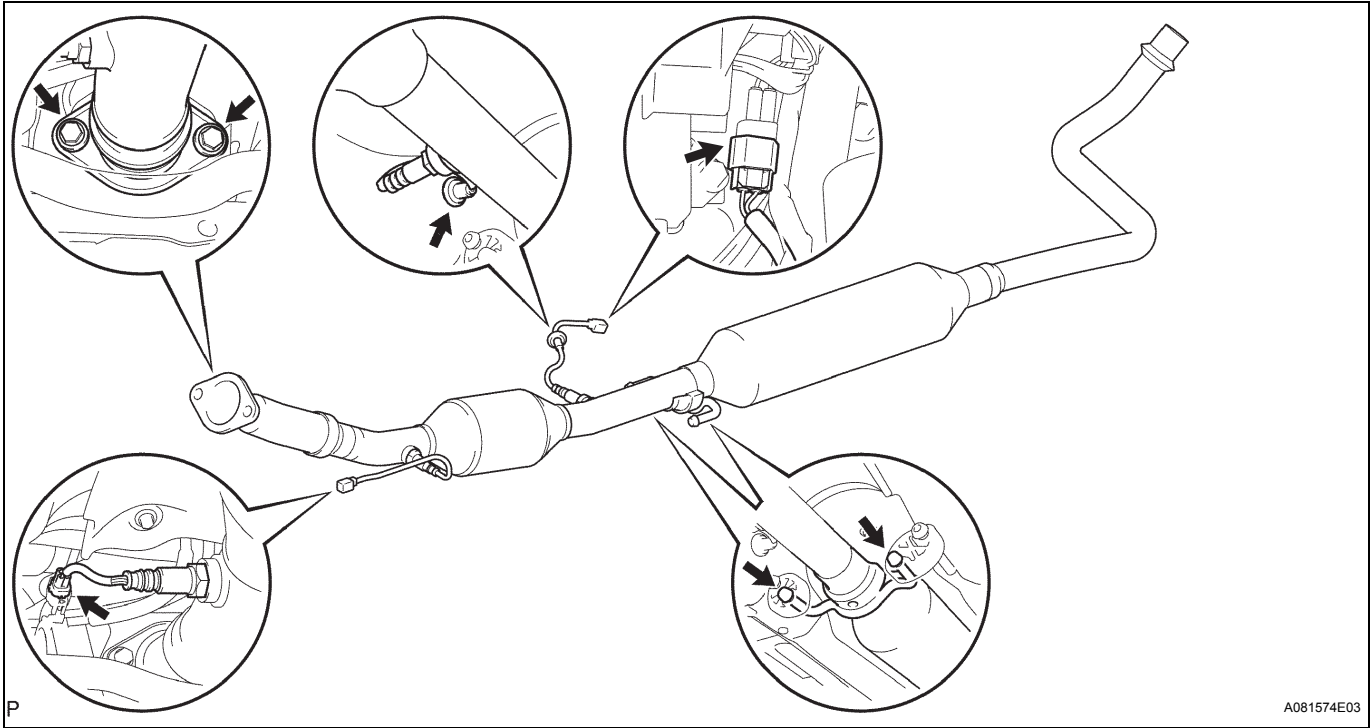
NOTICE:

- Tap in the gasket in the correct direction.
- Do not reuse the removed gasket.
- Do not to push in the gasket while installing the exhaust pipe.

- (c) Connect the 2 exhaust pipe supports, and install the exhaust pipe.

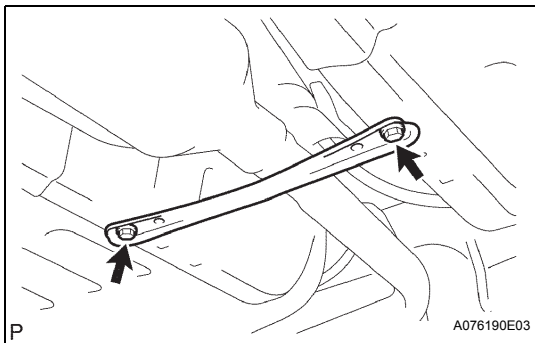
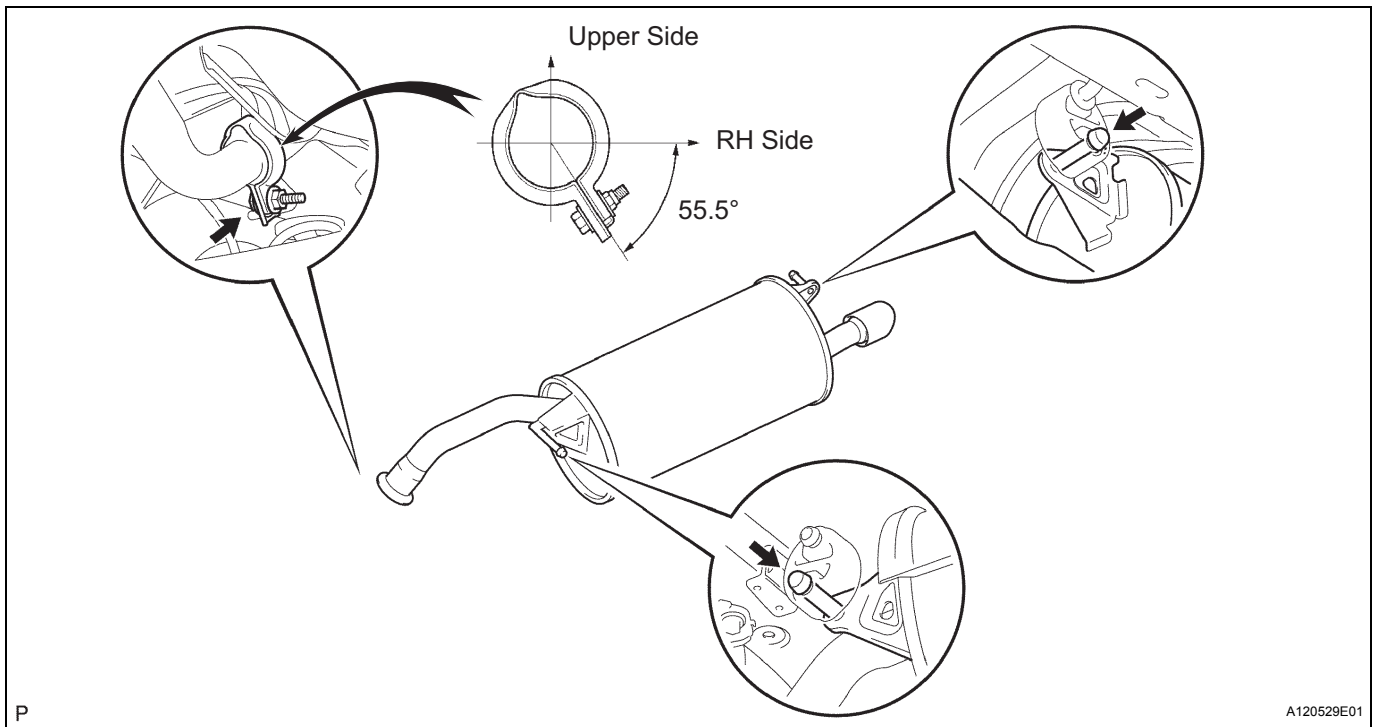


- (d) Install the 2 compression springs and 2 bolts.
Torque: 43 N*m (438 kgf*cm, 32 ft.*lbf)
- (e) Connect the 2 heated oxygen sensor connectors.
- (f) Install the grommet.



4. INSTALL TAILPIPE

- (a) Install a new gasket onto the front exhaust pipe.
- (b) Connect the 2 exhaust pipe supports, and install the tailpipe.
- (c) Install the clamp with the bolt as shown in the illustration.
Torque: 32 N*m (326 kgf*cm, 24 ft.*lbf)

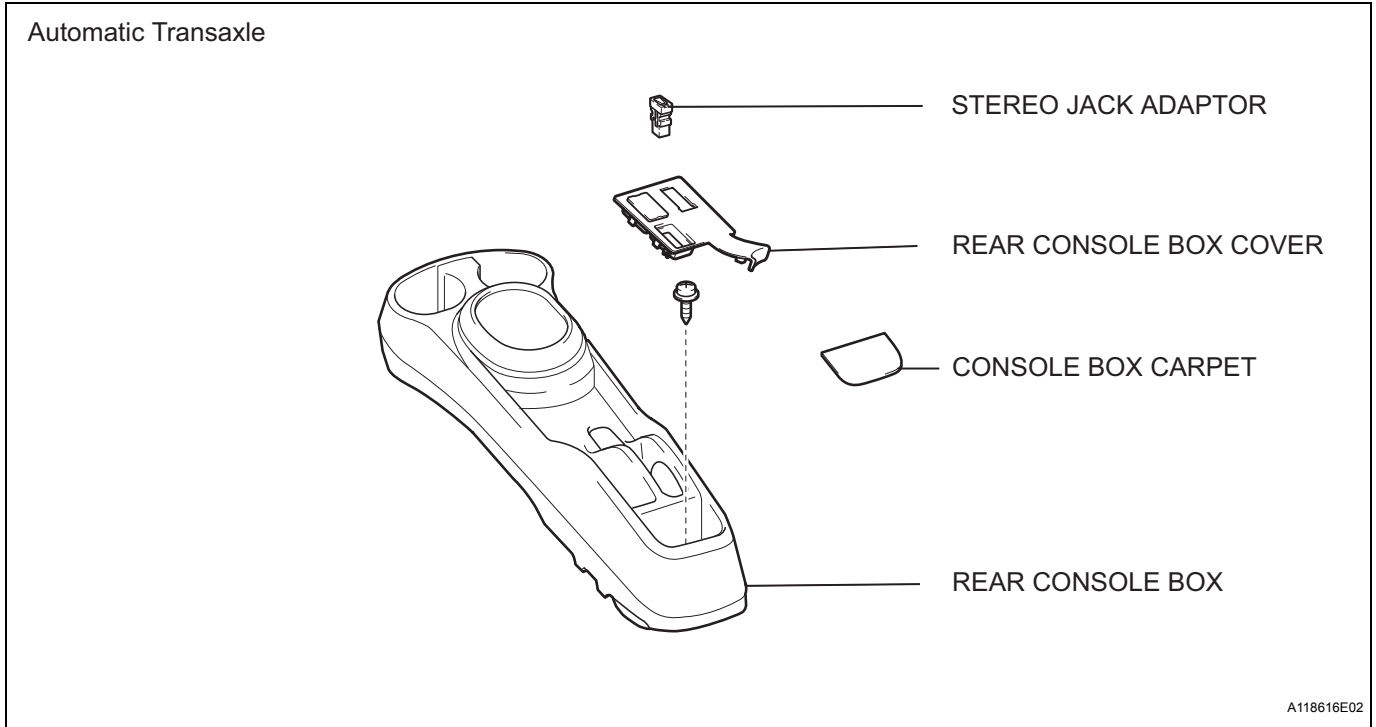


5. CHECK FOR EXHAUST GAS LEAKS
6. INSTALL FRONT PANEL BRACE
 - (a) Install the floor panel brace with the 2 bolts.
Torque: 20 N*m (204 kgf*cm, 14 ft.*lbf)
7. INSTALL REAR CONSOLE BOX (See page [IP-27](#))
8. INSTALL SHIFT LEVER KNOB (for Manual Transaxle)
9. CONNECT CABLE TO NEGATIVE BATTERY TERMINAL
10. PERFORM INITIALIZATION
 - (a) Perform initialization (see page [IN-23](#)).

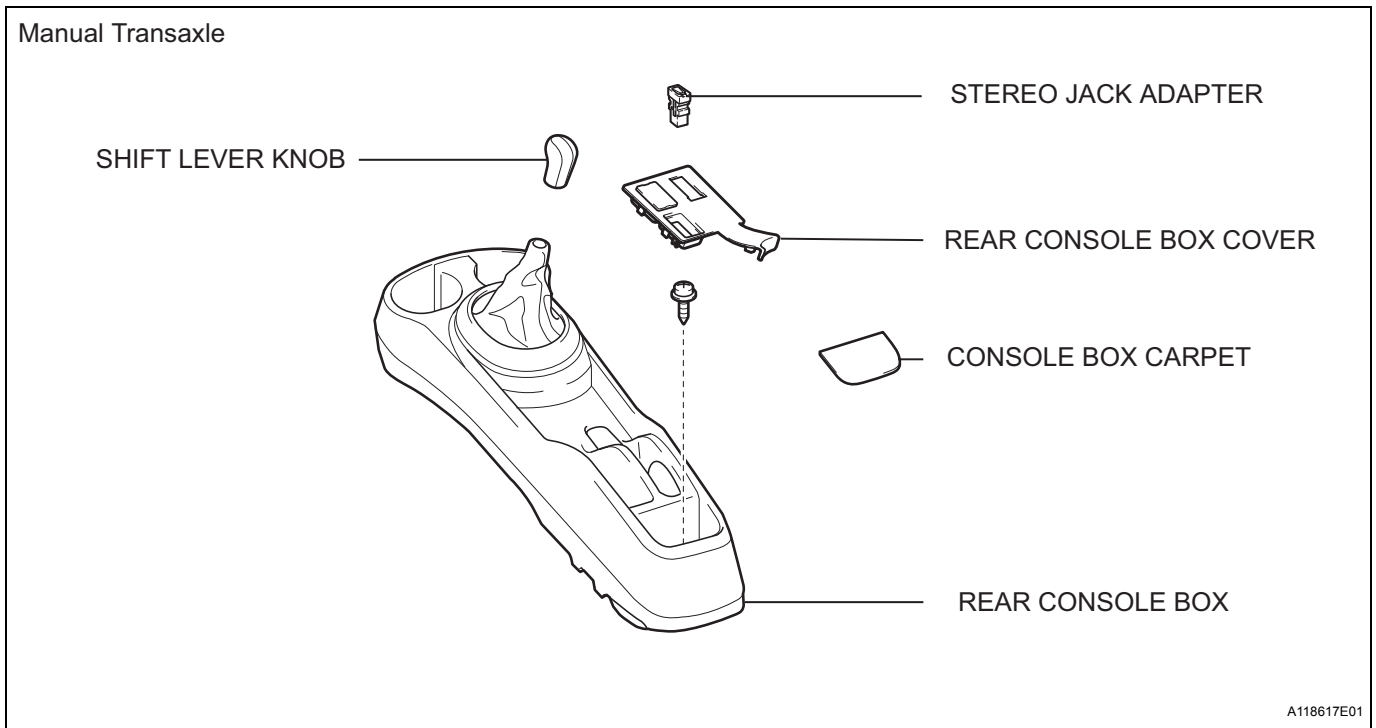
NOTICE:
Certain systems need to be initialized after disconnecting the cable from the negative (-) battery terminal.

EXHAUST PIPE

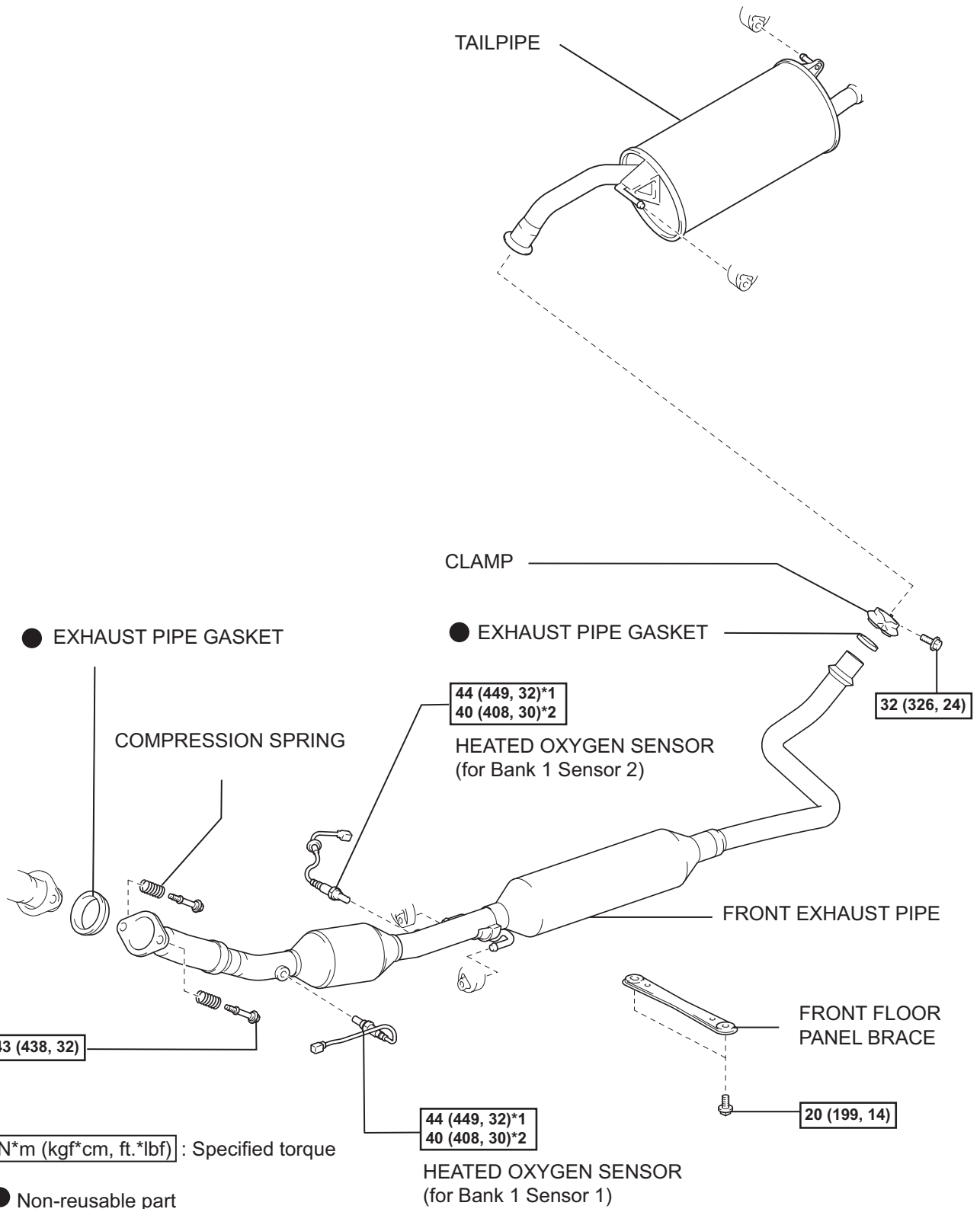
COMPONENTS



EX



EX



N*m (kgf*cm, ft.*lbf) : Specified torque

● Non-reusable part

*1: For use with SST

*2: For use without SST