

# VEHICLE GENERAL

0000-00

## INDEX

## VEHICLE GENERAL

### VEHICLE GENERAL

1. Specifications and identification.....	3
2. Specifications and check items.....	5



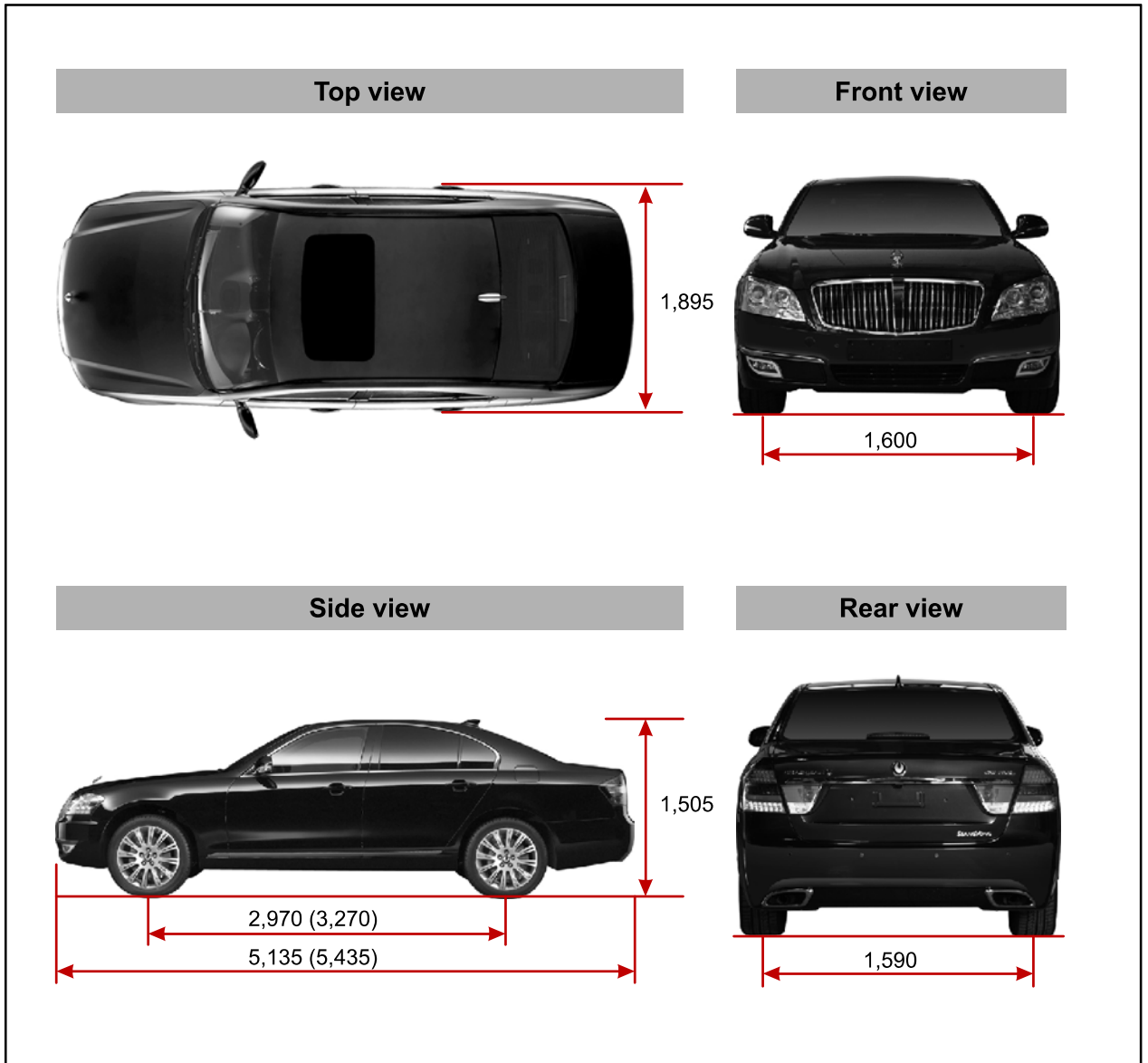


## Vehicle General

### 1. SPECIFICATIONS AND IDENTIFICATION

#### (1) Exterior Dimensions

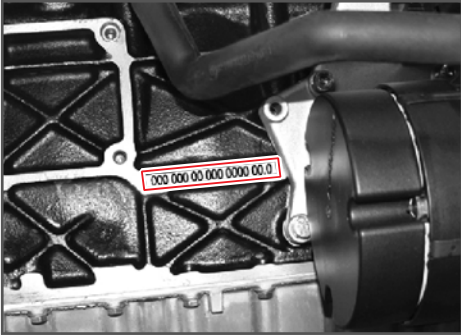
Unit: mm



Modification basis	
Application basis	
Affected VIN	

(2) Vehicle identification

1. Engine Number

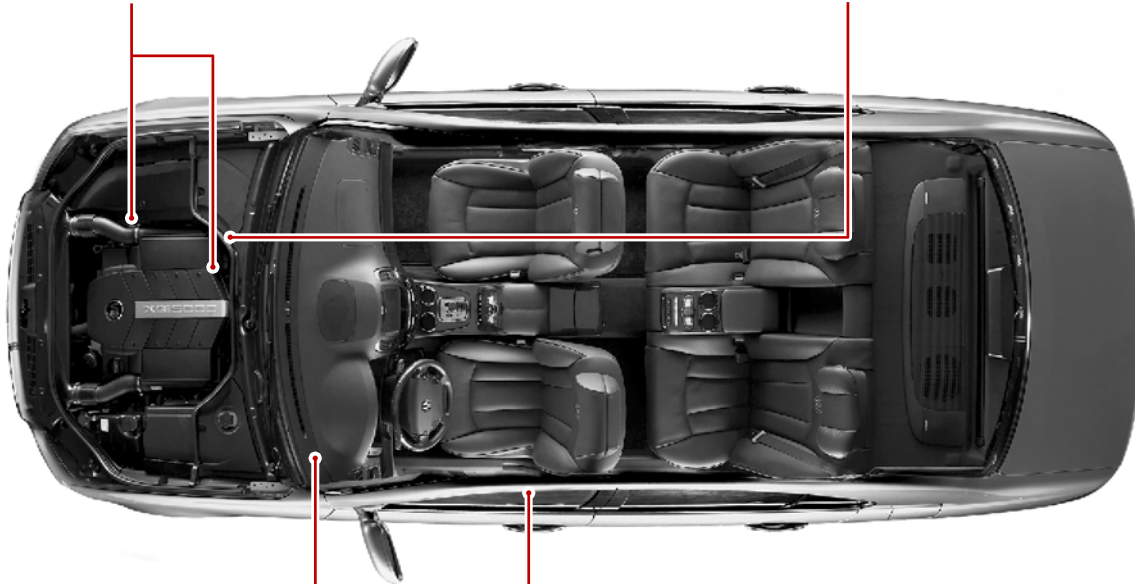


The engine number is stamped on the lower cylinder block behind alternator bracket.

2. Chassis Number



The chassis number is stamped on the bulkhead (passenger side) in engine compartment.

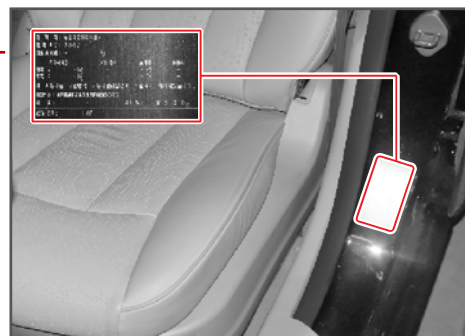


3. Visual VIN Label



Visual VIN label is located on the driver's side instrument panel.

4. Certification Label



The certification label is located on the lower B-pillar. (Rated tire pressure : 32 psi)

Modification basis	
Application basis	
Affected VIN	

## 2. SPECIFICATIONS AND CHECK ITEMS

### 1) Specifications

Item		G28D	G32D	G36D (Limousine)
Generals	Overall length (mm)	5,135	←	5,135(5,435)
	Overall width (mm)	1,895	←	←
	Overall height (mm)	1,505	←	←
	Ground clearance (mm)	175	←	←
	Min. turning radius (m)	5.6	←	5.6(6.1)
	Fuel	Gasoline	←	←
	Fuel tank capacity (ℓ)	83	←	←
	Curb vehicle weight (kg)	1,730(1,765)	1,960	2,010(2,070)
	Gross vehicle weight (kg)	2,055(2,090)	2,285	2,335(2,395)
Engine	Model	G28D	G32D	G36D
	Type	In-line 6	←	←
	Total displacement (cc)	2,799	3,199	3,598
	Compression ratio	10.0 : 1	←	←
	Max. power (ps/rpm)	200/ 6,600	225/ 6,600	250/ 6,600
	Max. torque (kfg.m/ rpm)	27.0/ 4,600	30.2/ 4,600	35.0/ 4,000
	Camshaft arrangement	DOHC	←	←
	Lubrication system	Gear pump forced circulation	←	←
	Idle speed (rpm)	700 ± 50	←	←
	Max. oil capacity (ℓ)	≒ 7.0	←	←
	Oil filter type	Full flow type/ filter paper type	←	←
	Cooling system	Water cooling, forced circulation	←	←
	Coolant capacity (ℓ)	≒ 10.2	←	←
	Cooling fan type	PWM cooling	←	←
	Air cleaner type	Dry, paper element	←	←
Fuel injection type	Electronic control type	←	←	

Modification basis	
Application basis	
Affected VIN	

Item		G28D	G32D	G36D (Limousine)	
Automatic Transmission (7 A/T)	Type		Planetary gear type	←	
	Operating type		Floor change type	←	
	Oil capacity (ℓ)		≒ 9.0	←	
	Gear ratio	1st		4,377	←
		2nd		2,859	←
		3rd		1,921	←
		4th		1,368	←
		5th		1,000	←
		6th		0.820	←
7th		0.728	←		
Reverse		1st	3,416	←	
	2nd	2,231	←		
Clutch (automatic)	Type		3 elements 1 stage 2 phases	←	
	Operating type		Torque converter	←	
Suspension	Front	Suspension type	MacPherson	Multi-link	
		Spring type	Coil spring	←	
	Rear	Suspension type	Multi-link	←	
		Spring type	Coil spring	←	
Brake	Type	Front	Disc	Ventilated disc	
		Rear	Disc	Ventilated disc	
	Master cylinder type		Tandem type	←	
	Brake operation type		Vacuum booster hydraulic type	←	
	Parking brake type		Electronic type	←	
	Parking brake wheels		Rear	←	

Item		G28D	G32D	G36D (Limousine)
Others	Battery	MF 100AH	←	←
	Alternator capacity (V-A)	12 - 140	←	←
	Starter motor capacity (V-kW)	12 - 1.7	←	←
	Tire size/specified inflation pressure	235 / 55 R17 (32 psi) 245 / 45 R19W (32psi)	245 / 45 R19W (32psi)	←
	Wheel size	7.5J X 17 (8.0J X 19)	8.0J X 19	←
	Wiper blade (mm)	Driver seat : 600, Passenger seat : 550	←	←

Modification basis	
Application basis	
Affected VIN	

## 2) Specified Oil (Fluid) and Capacity

Item	Oil (fluid) capacity				Specification
	G28D	G32D	G36D	G50D	
Engine oil	≐ 7.0 ℓ	←	←	8.0 ℓ	Genuine Ssangyong oil (Approved by MB SHEET 229.1, 229.3)
Automatic transmission fluid	≐ 9.0 ℓ	←	←	←	Genuine Ssangyong oil (Shell ATF 134 or Fuchs ATF 134)
Rear axle oil	≐ 1.3 ℓ	←	←	≐ 1.4 ℓ	Genuine Ssangyong oil (Shell synthetic fuel efficient GL75W / 90)
Front axle oil (AWD)	≐ 0.78 ℓ	←	←	←	Genuine Ssangyong oil (Shell synthetic fuel efficient GL75W / 90)
Coolant	≐ 10.2 ℓ	←	←	←	Genuine Ssangyong oil Anti-Freeze: SYC-1025, Anti-Freeze:Water = 50:50
Power steering fluid	≐ 1.0 ℓ	←	←	←	Genuine Ssangyong oil (ATF DEXRON II or III)
Brake fluid	As required	←	←	←	Ssangyong genuine fluid (DOT4)
Transfer case oil	0.8 ~ 1.0 ℓ	←	←	←	Ssangyong genuine oil (AFT DEXRON II/III)

### WARNING

- Use only Ssangyong recommended fluids and lubricants.
- Do not mix any different types or brands of oils or fluids. This may cause damages.
- Keep the specified levels when adding or replacing the fluids.
- Keep the replacement and check intervals.



## 3) Maintenance Schedule

Check item	Daily check	Weekly check	Change interval
Engine oil and oil filter	○	-	Initial change at 10,000 km of driving, then change at every 15,000 km of driving or 12 months. Regularly check the engine oil level and add engine oil if necessary. <b>Shorten the service interval</b> under severe condition in engine.
Coolant	○	-	Change at every 5 years or every 200,000 km of driving.
Brake fluid	○	-	Change at every 2 years.
Brake pipes and hoses	-	-	Check at initial 1,000 km of driving, then check at every 20,000 km of driving or every 1 year. Replace if necessary.
Brake pad/shoe and disc	-	-	Check at every 10,000 km of driving. Adjust or replace as necessary.
Air cleaner element	-	○	Clean at every 15,000 km of driving. change at every 60,000 km. Shorten the service interval under severe conditions such as driving on a dusty road or off-road.
Fuel filter	-	-	Change at every 100,000 km of driving.
Automatic transmission fluid	-	-	Check at every 30,000 km of driving or 1 year. Inspect and change as necessary. (But, <b>change at every 60,000 km</b> of driving under severe conditions for A/T.)
Axle oil (Front/rear)	-	-	Check oil level, leakage and oil condition at every 10,000 km of driving. Change as necessary.
Transfer case oil	-	-	Check at every 10,000 km of driving. Change at every 100,000 km of driving. (Check for leakage frequently.)
Air conditioner air filter	-	-	Change at every 10,000 km of driving. Shorten the service interval under excessive use or severe conditions such as driving on a dusty road or off-road.
Air purifier filter	-	-	Change at every 10,000 km of driving.
Spark plug	-	-	Change at every 160,000 km of driving.
Power steering fluid	-	-	Check at initial 1,000 km of driving. Replace if necessary. (Including hoses, connections and boots)

Modification basis	
Application basis	
Affected VIN	

▶ Engine in severe conditions

- Frequent stop-and-go traffic, extended idling, short driving distance below 6 km, driving distance below 16 km when the outside temperature remains below freezing point
- Driving in hilly or mountains terrain, sandy or dusty area
- High load driving such as trailer towing

▶ A/T in severe conditions

- Towing a trailer or off-road driving
- Taxi, patrol service or delivery service (extended idling and excessive driving with low speed)

Modification basis	
Application basis	
Affected VIN	