

IGNITION COIL RESISTANCE INSPECTION

- Remove foot board. (☞7-19)
- Disconnect the ignition coil read wire.

Measure the ignition coil resistance in both the primary and secondary windings. If the resistance is not within the standard range, replace the ignition coil with a new one.

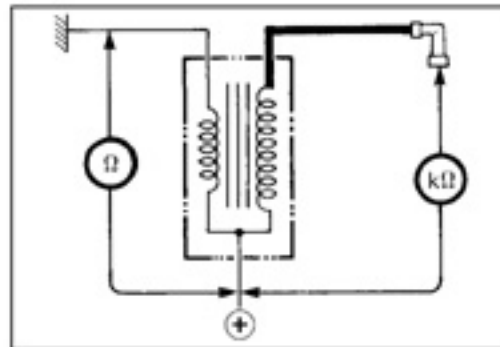
 **09900-25008: Multi circuit tester set**

 **Tester knob indication: Resistance (Ω)**

DATA Ignition coil/plug cap resistance

Primary : 3 – 5 Ω (+ Terminal – (- Terminal)

Secondary: 17 – 30 k Ω (Plug cap – (+ Terminal)

**CKP SENSOR PEAK VOLTAGE INSPECTION**

- Remove the front leg shield. (☞7-12)

NOTE:

When making this test, be sure that the battery is in fully charged condition.

- Disconnect the ECM coupler.
- With the lead wire's fastener (A) un locked, pull out the lead wire (G/W, BL).
- Connect the multi circuit tester with the peak voltage adaptor as follows.
 - ⊕ Probe: Green/White lead wire
 - ⊖ Probe: Blue lead wire

 **09900-25008: Multi circuit tester set**

CAUTION

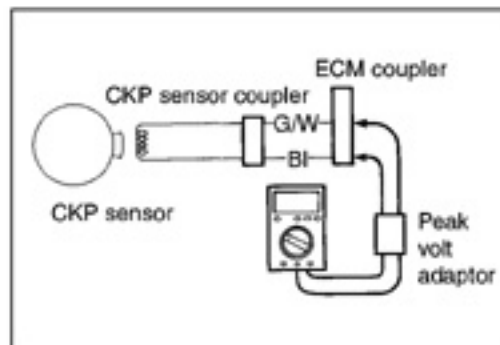
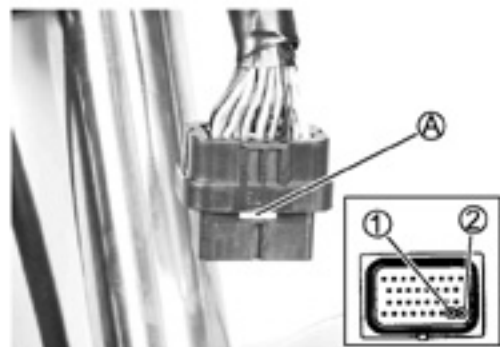
Before using the multi circuit tester and peak volt adaptor, be sure to refer to the appropriate instruction manual.

- Set the side-stand upright position, and then turn the ignition switch to the "ON" position.
- Grasp the front or rear brake.
- Pull the starter button and allow the engine to crank for a few seconds, and then measure the CKP sensor peak voltage.
- Repeat the above procedure a few times and measure the highest peak voltage.

 **Tester knob indication: voltage (---)**

DATA CKP sensor peak voltage: 4.5 V and more

If the peak voltage is lower than the specified values, check the peak voltage at the CKP sensor lead wire coupler.



- Remove the front box. (7-14)
- Disconnect the CKP sensor coupler ① and connect the multi circuit tester with the peak volt adaptor.

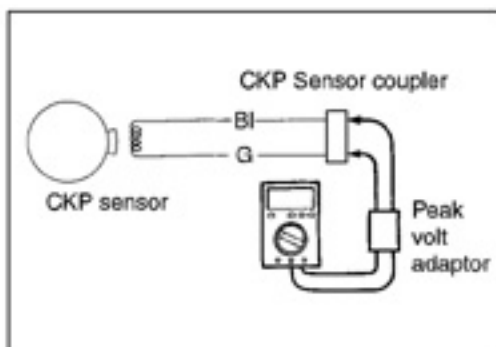
- ⊕ Probe: Green lead wire
- ⊖ probe: Blue lead wire

Measure the CKP sensor peak voltage at the CKP sensor lead wire coupler, in the same manner as on the ECM coupler.

 **Tester knob indication: Voltage (---)**

DATA CKP sensor peak voltage: 4.5 V and more

If the peak voltage on the CKP sensor lead wire coupler is ok but on the ECM coupler is out of specification, the wire harness must be replaced. If both peak voltages are out of specification, the CKP sensor must be replaced and re-checked.



CKP SENSOR RESISTANCE INSPECTION

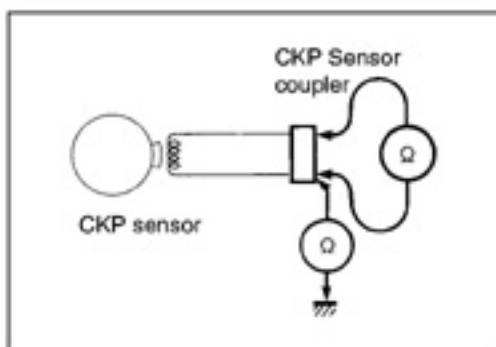
- Remove the front box. (7-14)
- Disconnect the CKP sensor coupler.

Measure the resistance between the lead wires and ground. If the resistance is not specified value, the CKP sensor must be replaced.

 **09900-25008: Multi circuit tester set**

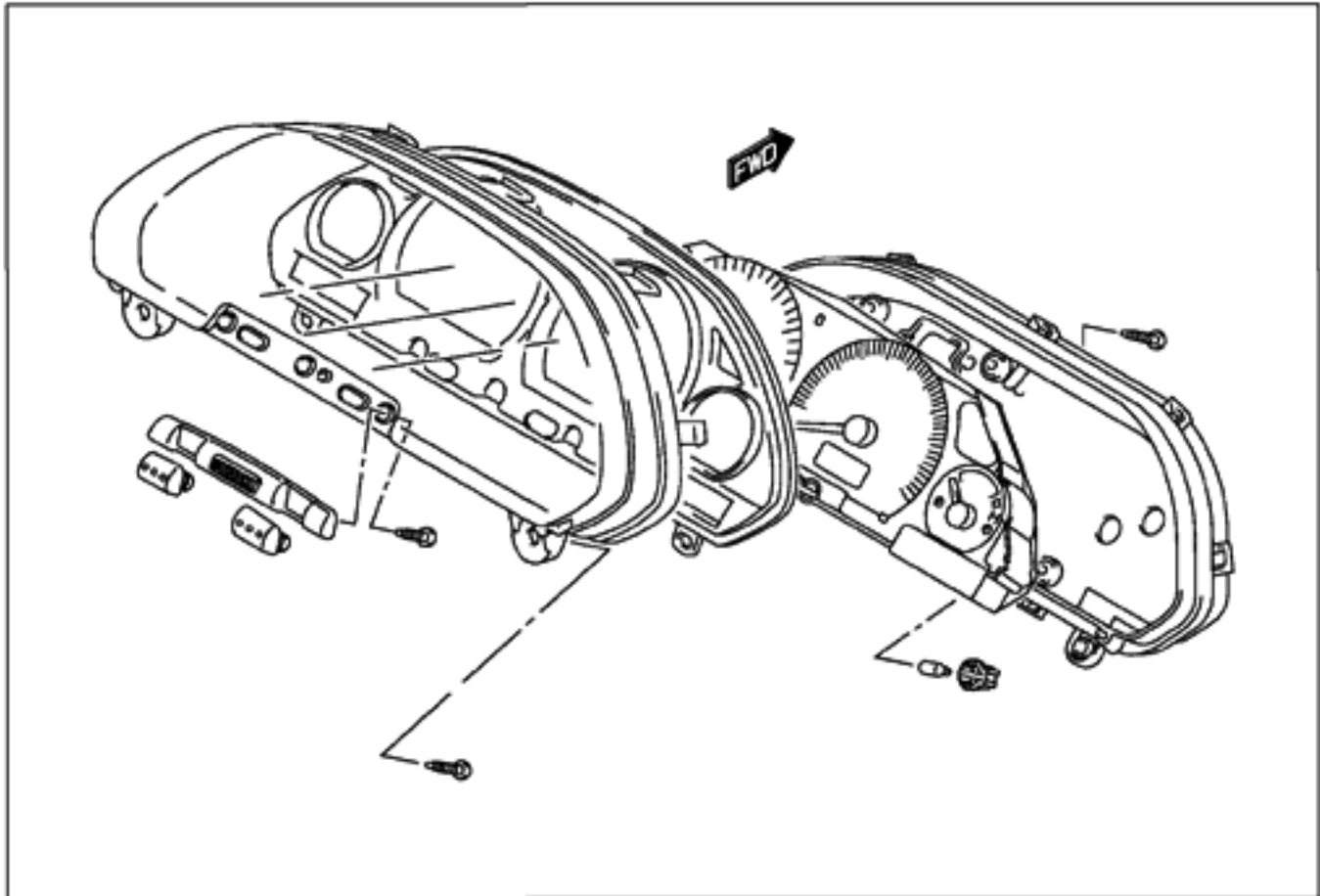
 **Tester knob indication: Resistance (Ω)**

DATA CKP sensor resistance : 180 – 288 Ω (Green – Blue)
: ∞ Ω (Green – Ground)



COMBINATION METER REMOVAL AND DISASSEMBLY

- Remove the front meter panel. (☞7-13)
- Disassembly the combination meter, as shown.



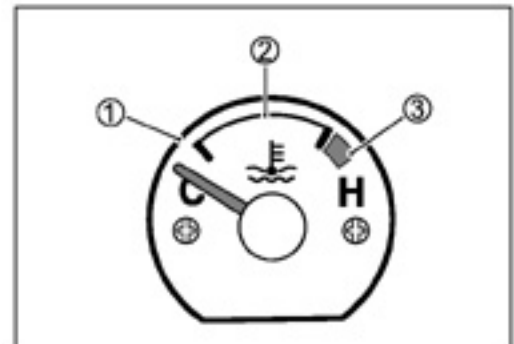
INSPECTION

WATER TEMPERATURE GAUGE INSPECTION

- For the inspection procedure. (☞ 6-9)
- Remove the frame cover. (☞ 7-18)
- Disconnect the water temperature sensor coupler.
- With the ignition switch turned on and a variable resistor connected between the Dark green and Black/Brown lead wires for the water temperature gauge needle indication when the resistance is adjusted to the specified values.

If the indication excessively deviates from the standard value, replace the meter with a new one.

Water temperature gauge needle indication			
Resistance Ω	Approx. 770 Ω	Approx. 155 Ω	Approx. 75 Ω
Needle position	①	②	③



PEEDOMETER INSPECTION

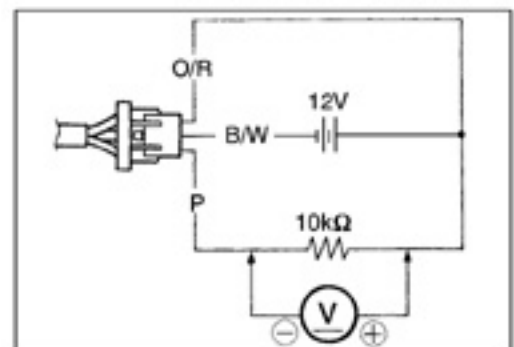
If the speedometer, odometer or trip meter does not function properly, inspect the speedometer sensor and connection of coupler. If the speedometer sensor and connection are all right, replace the meter with a new one.

SPEED SENSOR INSPECTION

- Disconnect the speed sensor coupler.
- Connect 12 V battery, 10k Ω resistance and the tester to the speed sensor lead coupler as shown.

 09900-25008: Multi-circuit tester set

 Tester knob indication: Voltage (---)

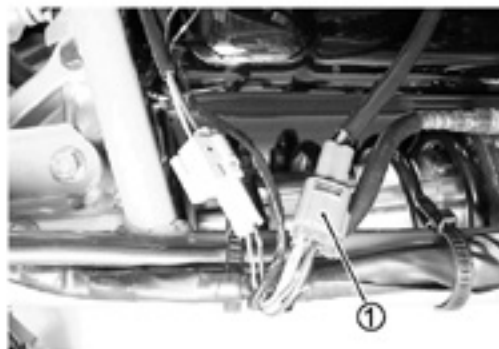


- Lift and turn the front wheel and check that voltage varies between 0-12 V.
- If any abnormal condition is noted, replace the sensor with a new one.



FUEL LEVEL METER INSPECTION

- Remove the side leg shield. (☞ 7-15)
- Disconnect the fuel pump coupler ①.



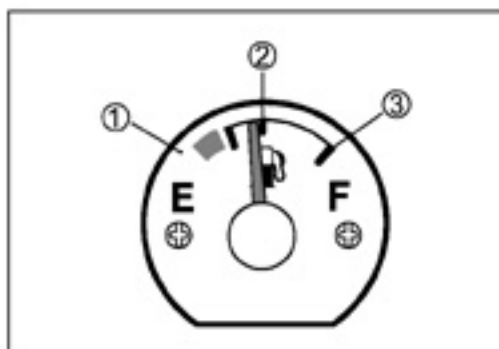
- Check that the fuel level meter moves properly when the resistor is connected between the fuel pump coupler terminals.
- If the indication excessively deviators from the standard value, replace the meter with a new one.



NOTE:

- * Prior to this inspection, check that the fuel gauge is functioning properly.
- * When reading the meter indication, wait at least for 20 seconds after the resistor has been connected.

Resistor	Meter indication
Approx. 95 Ω	①
Approx. 51 Ω	②
Approx. 10 Ω	③



FUEL LEVELGAUGE INSPECTION

For the inspection procedure. (☞ 5-11)