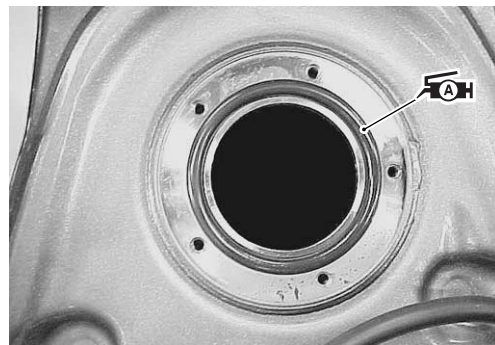


- Install the new O-ring and apply grease to it.

⚠ WARNING

The O-ring must be replaced with a new one to prevent fuel leakage.

-  **99000-25030: SUZUKI SUPER GREASE "A" (USA)**
99000-25010: SUZUKI SUPER GREASE "A" (Others)



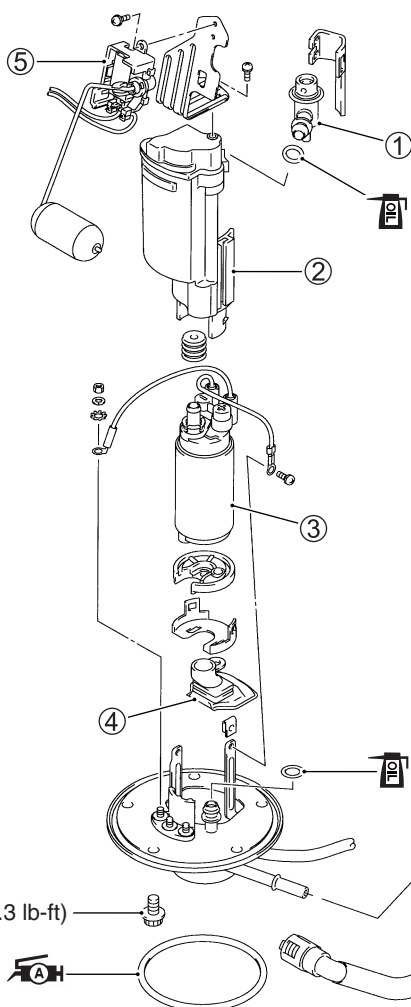
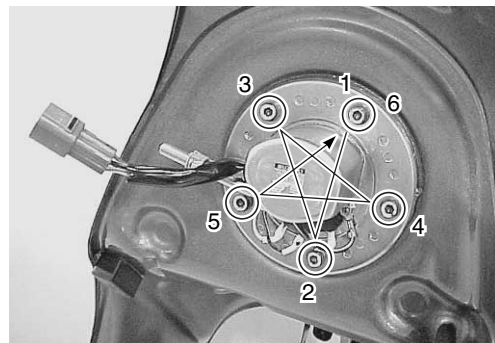
- When installing the fuel pump assembly, first tighten all the fuel pump assembly mounting bolts lightly in the ascending order of numbers, and then tighten them to the specified torque in the above tightening order

 **Fuel pump mounting bolt: 10 N·m (1.0 kgf-m, 7.3 lb-ft)**


NOTE:

Apply a small quantity of the **THREAD LOCK "1342"** to the thread portion of the fuel pump mounting bolt.

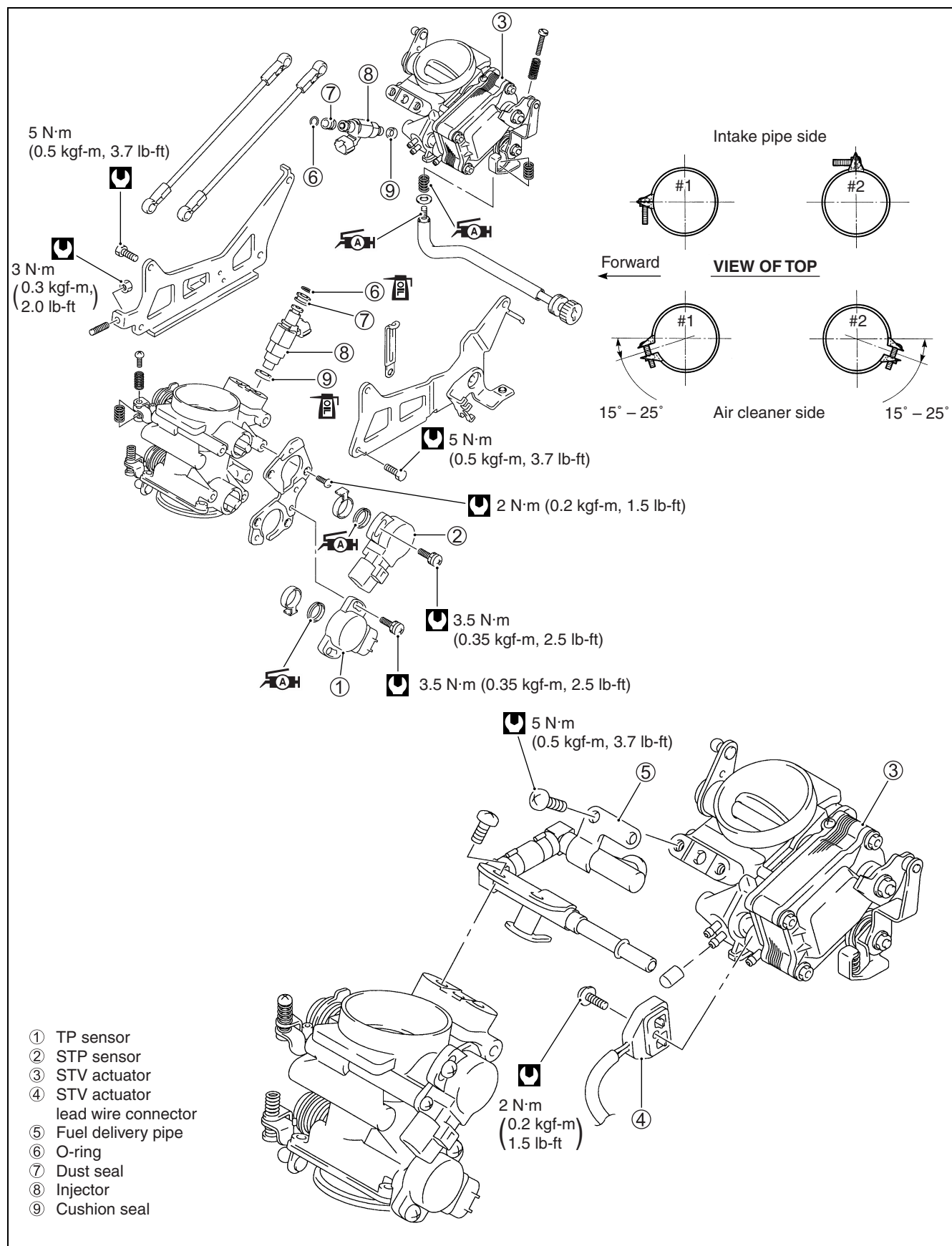
-  **99000-32050: THREAD LOCK "1342"**



- ① Fuel pressure regulator
- ② Fuel pump case/Fuel filter cartridge (For high pressure)
- ③ Fuel pump
- ④ Fuel mesh filter (For low pressure)
- ⑤ Fuel level gauge

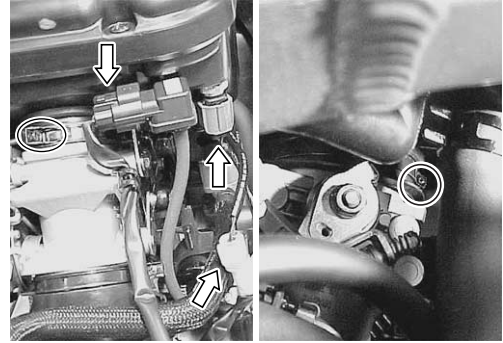
  **10 N·m**
(1.0 kgf-m, 7.3 lb-ft)

THROTTLE BODY AND STV ACTUATOR CONSTRUCTION



THROTTLE BODY REMOVAL

- Remove the fuel tank. (☞ 4-52)
 - Loosen the respective throttle body clamp screws (air cleaner side).
 - Disconnect the *PAIR solenoid valve lead wire coupler, IAP sensor coupler and IAT sensor coupler.
 - Disconnect the PAIR hoses from the PAIR solenoid valve.
 - Remove the air cleaner box.
- * For E-24 model is operated by the vacuum.



- Loosen the respective throttle body clamp screws (intake pipe side).



- Disconnect the various lead wire couplers.
 - ① STP sensor
 - ② TP sensor/Fuel injector
 - ③ STVA motor

