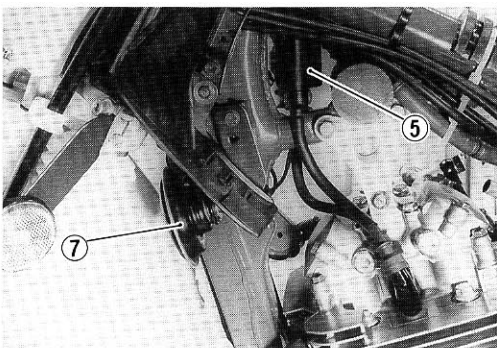
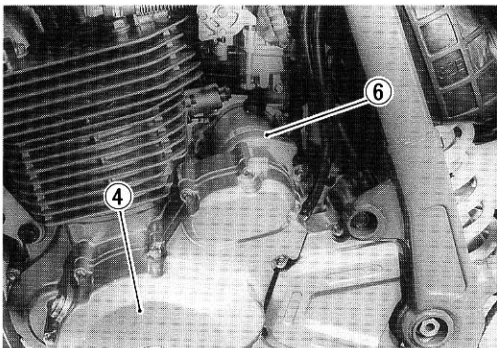
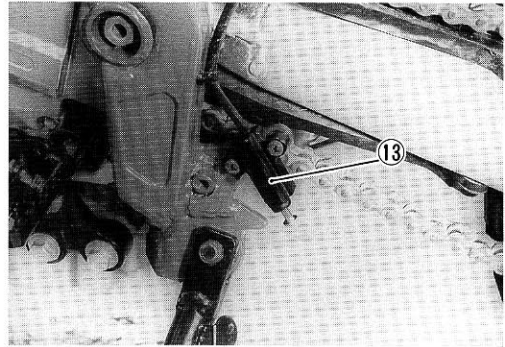
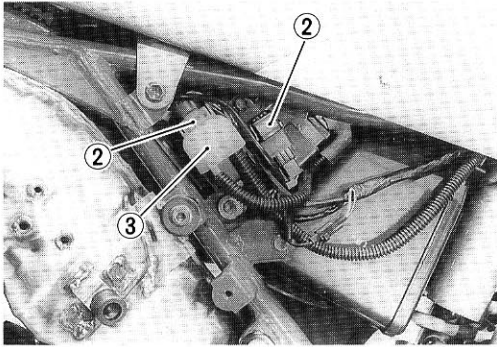
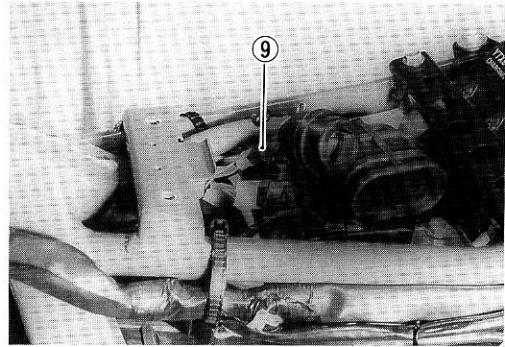
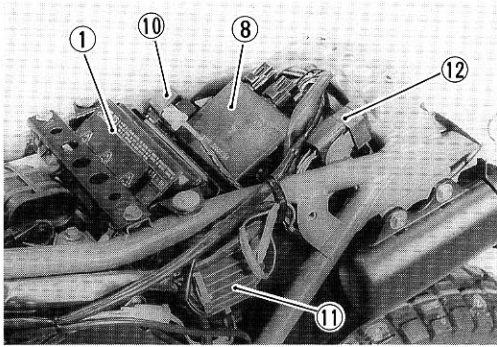


LOCATION OF ELECTRICAL COMPONENTS



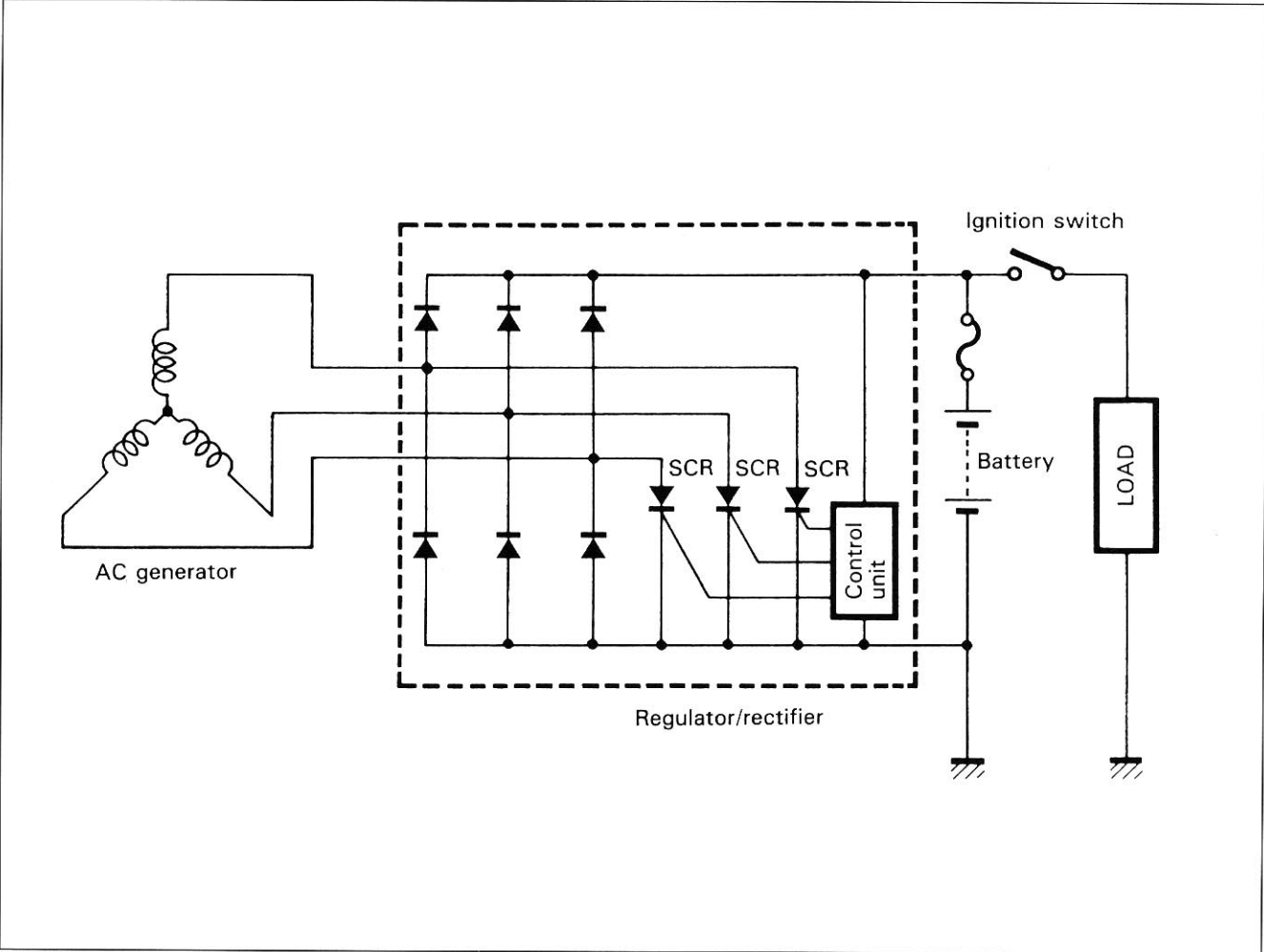
- ① Battery
- ② Fuse
- ③ Starter relay
- ④ Generator
- ⑤ Ignition coil
- ⑥ Starter motor
- ⑦ Horn
- ⑧ CDI unit
- ⑨ Diode
- ⑩ Turn signal relay
- ⑪ Regulator/rectifier
- ⑫ Side-stand/ignition interlock relay
- ⑬ Side-stand switch

CHARGING SYSTEM

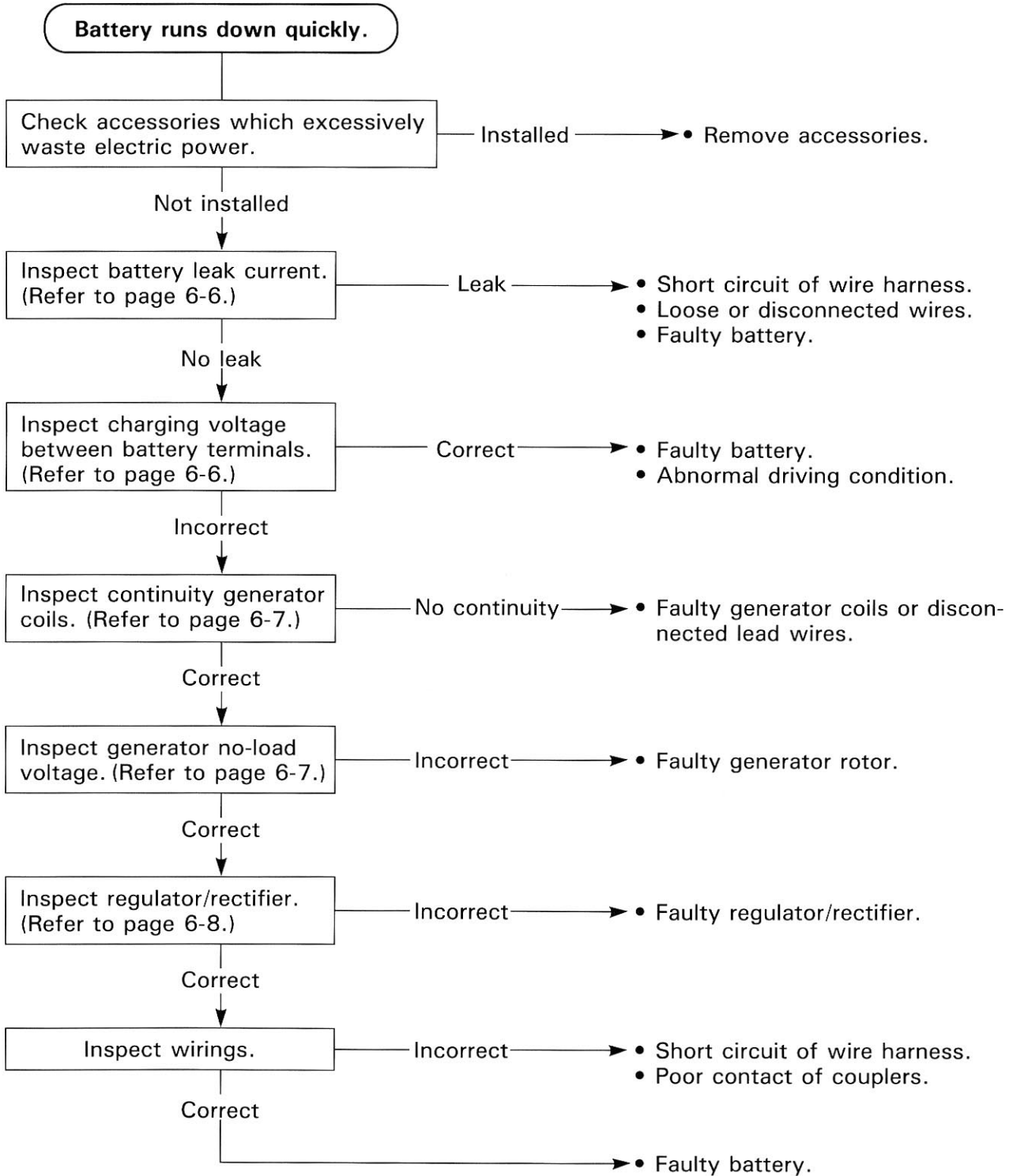
DESCRIPTION

The circuit of the charging system is indicated in the figure, which is composed of an AC generator, regulator/rectifier unit and battery.

The AC current generated from AC generator is converted by rectifier and is turned into DC current, then it charges the battery.



TROUBLESHOOTING



Others

Battery overcharge	<ul style="list-style-type: none"> • Faulty regulator/rectifier • Faulty battery • Poor contact of generator lead wire coupler
--------------------	---