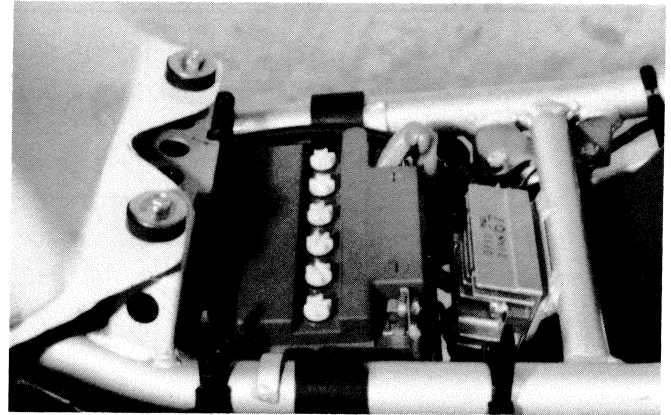


Check the electrolyte level and add distilled water, as necessary, to raise the electrolyte to each cell's upper level.

Check the battery for proper charge by taking an electrolyte S.G. reading. If the reading is 1.22 or less, as corrected to 20°C, it means that the battery is still in a run-down condition and needs recharging.

**NOTE:**

First, remove the ⊖ lead wire.



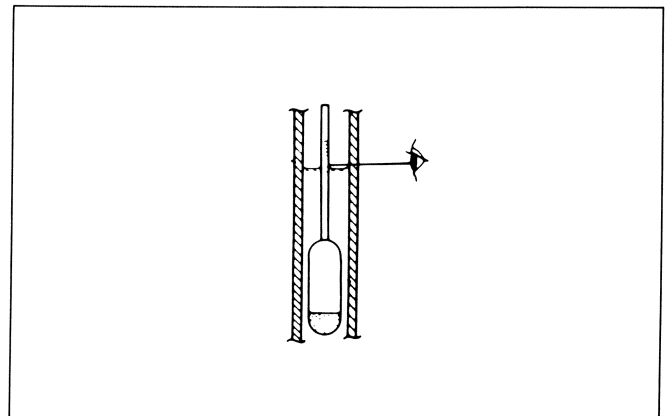
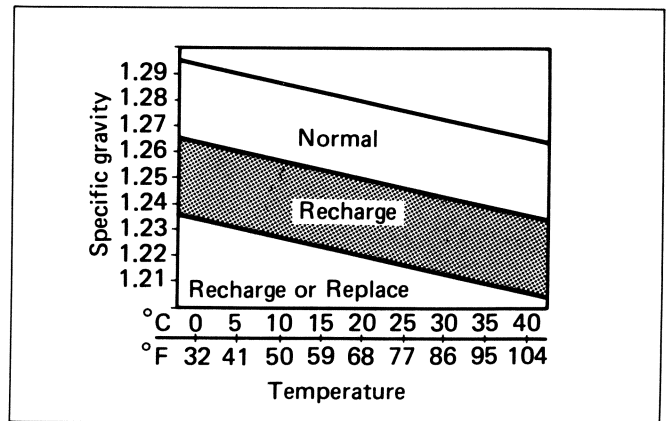
**BASED ON S.G. READING RECHARGING OPERATION**

To correct an S.G. reading 20°C, use following table.

To read the S.G. on the hydrometer, bring the electrolyte in the hydrometer to eye level and read the graduations on the float scale bordering on the meniscus (curved-up portion of electrolyte surface), as shown in figure.

Check the reading (as corrected to 20°C) with chart to determine the recharging time in hours by constant-current charging at a charging rate of 1.2 amperes (which is a tenth of the capacity of the present battery).

Be careful not to permit the electrolyte temperature to exceed 45°C, at any time, during the recharging operation. Interrupt the operation, as necessary, to let the electrolyte cool down. Recharge the battery to the specification.

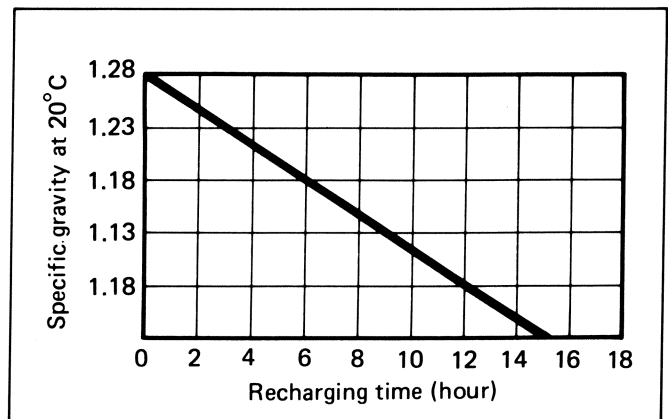


Electrolyte specific gravity	1.28 at 20°C
------------------------------	--------------

**CAUTION:**

Constant-voltage charging, otherwise called "quick" charging, is not recommendable for it could shorten the life of the battery.

09900-28403	Hydrometer
-------------	------------



## SERVICE LIFE

Lead oxide is applied to the pole plates of the battery which will come off gradually during the service. When the bottom of the battery case becomes full of the sediment, the battery cannot be used any more. If the battery is not charged for a long time, lead sulfate is generated on the surface of the pole plates and will deteriorate the performance (sulfation). Replace the battery with new one in such a case.

When a battery is left for a long term without using, it is subject to sulfation. When the motorcycle is not used for more than 1 month (especially during the winter season), recharge the battery once a month at least.

**WARNING:**

- \* Before charging a battery, remove the seal cap from each cell.
- \* Keep fire and sparks away from a battery being charged.
- \* When removing a battery from the motorcycle, be sure to remove the  $\ominus$  terminal first.

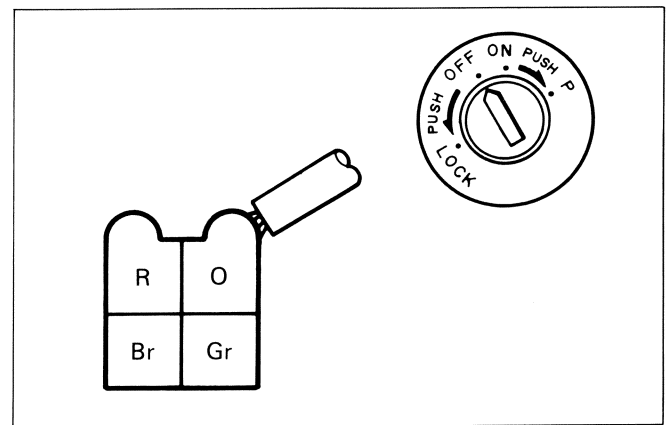
## SWITCHES

- Inspect each switch for continuity with the pocket tester referring to the chart.
- If any abnormality is found, replace the respective switch assembly with new one.

09900-25002	Pocket tester
-------------	---------------

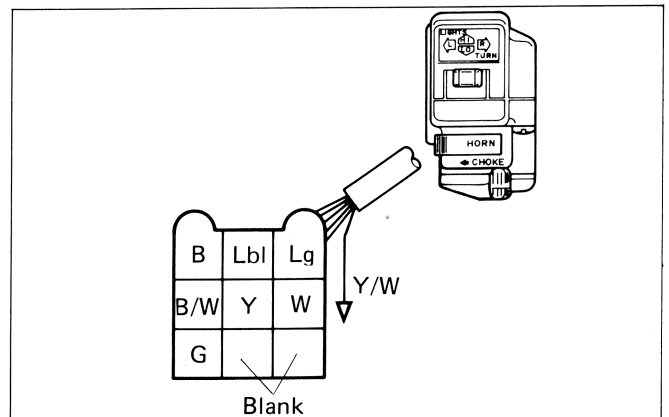
## IGNITION SWITCH

POSITION \ COLOR	R	O	Gr	Br
OFF				
ON	○	○	○	○
P	○			○



## DIMMER SWITCH

POSITION \ COLOR	W	Y	Y/W
HI		○	○
LO	○		○



## HORN SWITCH

POSITION \ COLOR	G	B/W
ON	○	○
OFF		

## TURN SIGNAL LIGHT SWITCH

POSITION \ COLOR	B	Lbl	Lg
R		○	○
•			
L	○	○	