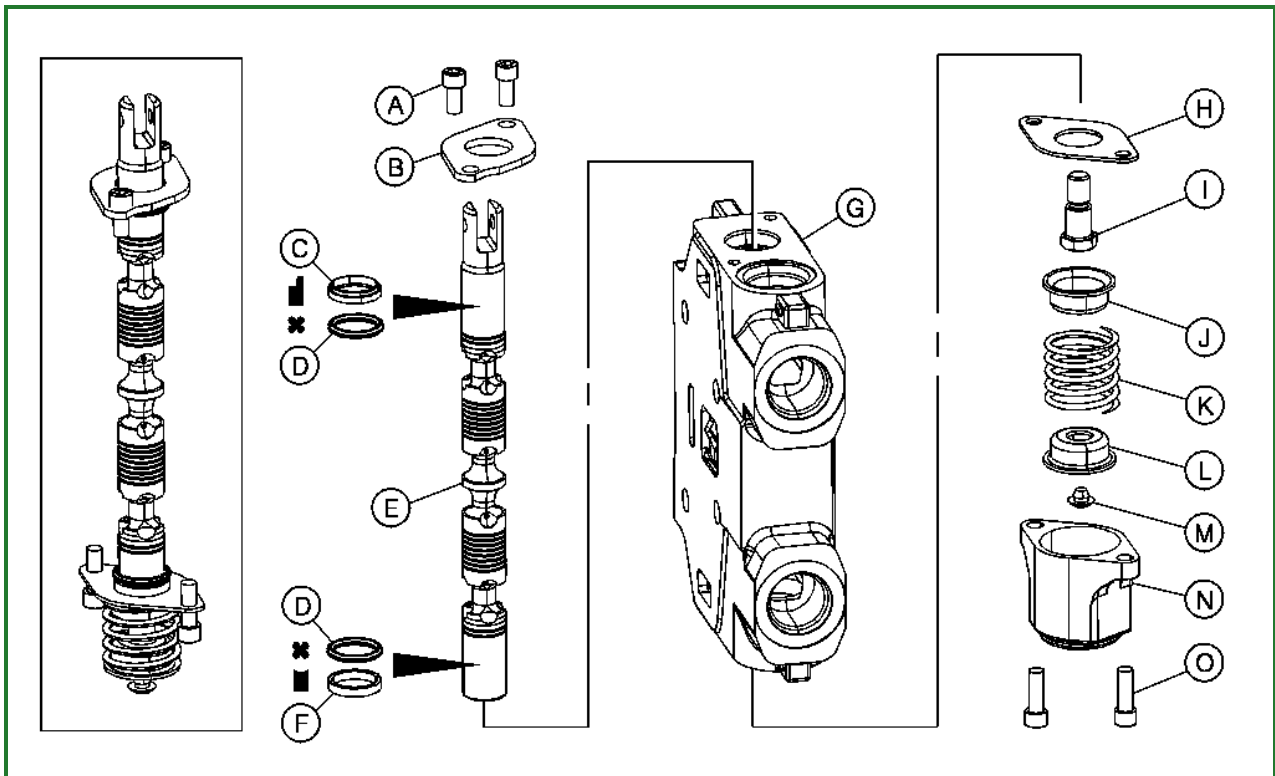


## Spool Valve Disassemble and Assemble



### TX1009008-UN: Spool Valve

#### LEGEND:

- A - Screw (2 used)
- B - Plate
- C - Upper Spacer
- D - Packing
- E - Spool
- F - Lower Spacer
- G - Valve Section Housing
- H - Plate
- I - Rod
- J - Retainer
- K - Spring
- L - Retainer
- M - Rod Cap
- N - End Cap Housing
- O - Screw ( 2 used)

#### NOTE:

Keep spool and control valve section together as a matched set. Spools are machined for specific hydraulic functions.

1. Spool valve can be disassembled as shown.

#### NOTE:

Detent assembly may be used in place of end cap assembly (items H—O) on some valve sections. For more information, see *Detent Disassemble and Assemble* . (Group

3860.)

2. Inspect spool for scratches and bends. Replace packing (D).

**NOTE:**

*Spacer (C) used with packing at top of valve section, is stepped. Spacer (F) used with packing at bottom of valve section, has shallow concave groove around top surface.*

Go to [Section\\_38:Group\\_3860](#)

GD61784,0000146-19-20070802