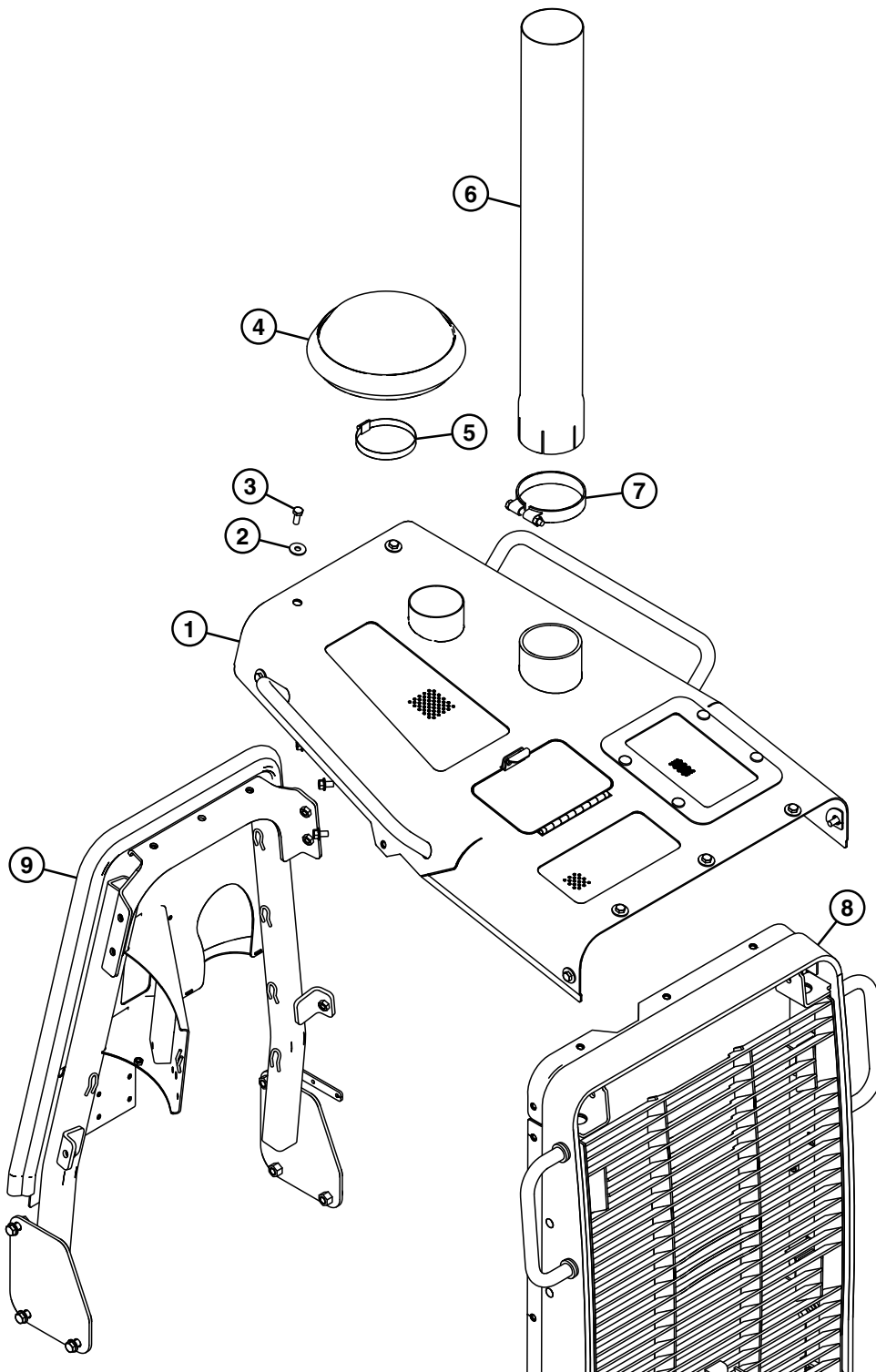


# Group 1910 Hood and Engine Enclosure

## Hood Remove and Install



TX1033646

Hood Remove and Install

TX1033646—UN—18DEC07

Continued on next page

SW03989.00001E4 -19-25MAR08-1/2

## Hood and Engine Enclosure

1— Hood Assembly  
2— Washer (9 used)  
3— Cap Screw (9 used)

4— Air Intake  
5— Air Intake Clamp  
6— Muffler Extension Stack

7— Muffler Extension Stack  
Clamp  
8— Grille  
9— Hood Support

1. Remove engine side shields. See Hood Support and Engine Side Shields Remove and Install. (Group 1910.)
2. Loosen air intake clamp (5) and remove air intake (4).
3. Under hood, loosen clamp and detach air cleaner boot.
4. Loosen muffler extension stack clamp (7) and remove muffler extension stack (6).
5. Support hood with appropriate lifting device. Remove cap screws (3) and washers (2).
6. Remove hood.
7. Repair or replace parts as necessary.
8. Install hood. Tighten cap screws securely.
9. Connect air cleaner boot and tighten clamp.
10. Install air intake and muffler extension stack. Tighten clamps securely.
11. Install engine side shields. See Hood Support and Engine Side Shields Remove and Install. (Group 1910.)

**⚠ CAUTION: Prevent possible crushing injury from heavy component. Use appropriate lifting device.**

### Specification

Hood—Weight.....	30 kg
	66 lb

SW03989,00001E4 -19-25MAR08-2/2