

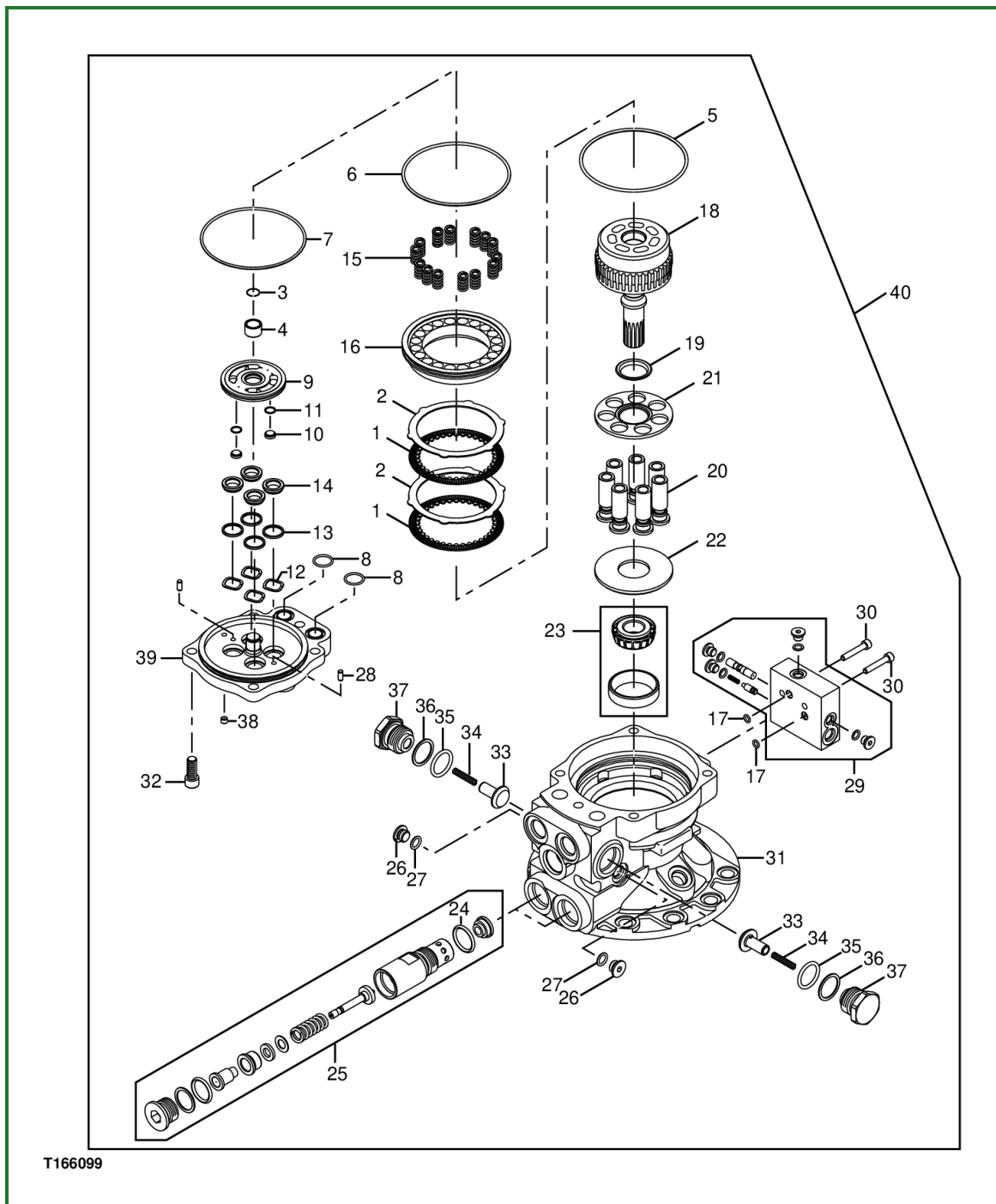
## Swing Motor and Park Brake Assemble

1. IMPORTANT:

If rotor or pistons are damaged, replace swing motor and park brake.

**NOTE:**

For swing motor cross section see *Swing Motor, Crossover Relief Valve, and Make-Up Check Valve Operation* . (Group 9025-05.)



T166099-UN: Swing Motor and Park Brake

**LEGEND:**

- 1 - Friction Plate (2 used)
- 2 - Plate (2 used)

- 3 - Snap Ring
- 4 - Needle Bearing
- 5 - O-Ring
- 6 - O-Ring
- 7 - O-Ring
- 8 - O-Ring (2 used)
- 9 - Valve Plate
- 10 - Piston (2 used)
- 11 - O-Ring (2 used)
- 12 - Scrowave (4 used)
- 13 - Packing (4 used)
- 14 - Bushing (4 used)
- 15 - Spring (14 used)
- 16 - Piston
- 17 - O-Ring (2 used)
- 18 - Rotor
- 19 - Spherical Bushing
- 20 - Piston (7 used)
- 21 - Retainer
- 22 - Swash Plate
- 23 - Inner and Outer Race Bearing
- 24 - O-Ring
- 25 - Relief Valve (2 used)
- 26 - Plug (2 used)
- 27 - O-Ring (2 used)
- 28 - Pin (2 used)
- 29 - Swing Motor Park Brake Release Valve
- 30 - Cap Screw (2 used)
- 31 - Housing
- 32 - Cap Screw (5 used)
- 33 - Make-Up Valve (2 used)
- 34 - Spring (2 used)
- 35 - O-Ring (2 used)
- 36 - Backup Ring (2 used)
- 37 - Plug (2 used)
- 38 - Orifice
- 39 - Cover
- 40 - Swing Motor and Park Brake

Install spherical bushing (19) to rotor (18).

2. Install pistons (20) to retainer (21).

3. **IMPORTANT:**

Pistons must be installed into the same bores because of wear patterns.

Apply clean hydraulic oil to piston and rotor contact surfaces. Install pistons into rotor.

4. Apply hydraulic oil to piston and swash plate (22) contact surfaces. Install swash plate to rotor.