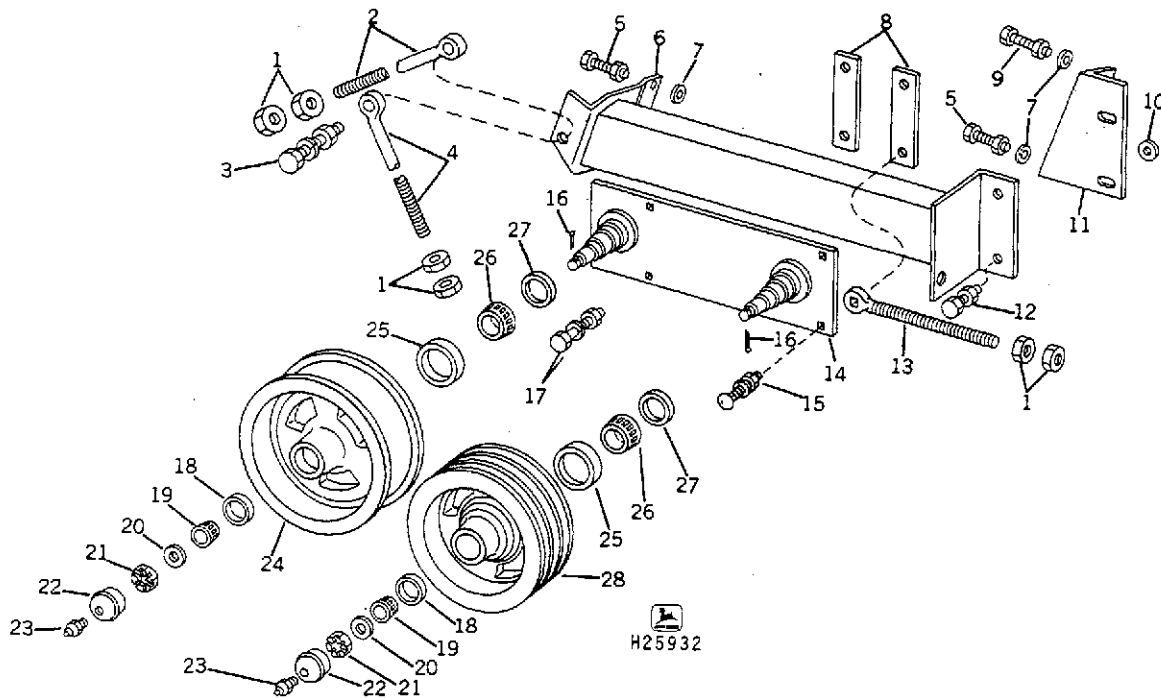


Propulsion Drive Tightener Sheaves



- | | | | |
|---|--|--|---|
| 1—Nut, 5/8-inch
(6 used) | 8—Strap (2 used) | 16—Cotter Pin,
1/8 x 1-inch (2 used) | 21—Slotted Nut, 5/8-inch
(2 used) |
| 2—Eyebolt, 17-3/4-inch | 9—Cap Screw,
3/8 x 3-1/4-inch | 17—Round Head Bolt,
1/2 x 3-3/4-inch (3 used) | 22—Grease Cap (2 used) |
| 3—Cap Screw,
5/8 x 2-1/2-inch | 10—Washer, 13/32 x 13/16 x
.060-inch (2 used) | 18—Bearing Cup (2 used) | 23—Straight Grease
Fitting (2 used) |
| 4—Eyebolt, 18-1/4-inch | 11—Rear Support | 19—Roller Bearing (2 used) | 24—Idler Sheave,
11-inch dia. |
| 5—Cap Screw,
3/8 x 3-inch (3 used) | 12—Cap Screw,
3/8 x 1-1/2-inch (2 used) | 20—Washer, 11/16 x 1-1/4 x
.105-inch | 25—Bearing Cup (2 used) |
| 6—Front Support | 13—Eyebolt, 9-inch | (2 used) (-1738) | 26—Bearing Cone (2 used) |
| 7—Washer, 13/32 x 1-1/4 x
.090-inch (4 used) | 14—Plate | Washer, Flat
(2 used) (1739-) | 27—Seal (2 used) |
| | 15—Round Head Bolt,
1/2 x 4-1/4-inch | | 28—Tightener Sheave
10-13/32-inch dia. |

Fig. 98-Exploded View of Propulsion Drive Belt Tighteners

Removal

The propulsion drive tightener sheave(s) may be removed and serviced without removing the hydrostatic unit.

CAUTION: The approximate weight of each tightener sheave is 30 lbs (14 kg). Be careful when removing a sheave from the mounting plate.

Loosen bolts (A, B, and C, Fig. 99). Remove drive belts from sheaves and remove sheave(s) to be serviced.

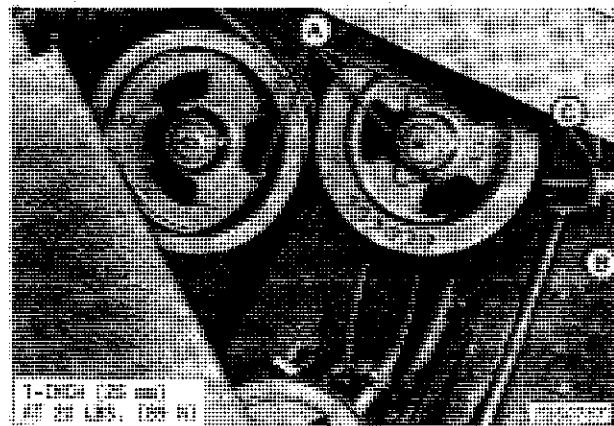


Fig. 99-Loosening Propelling Drive Belts