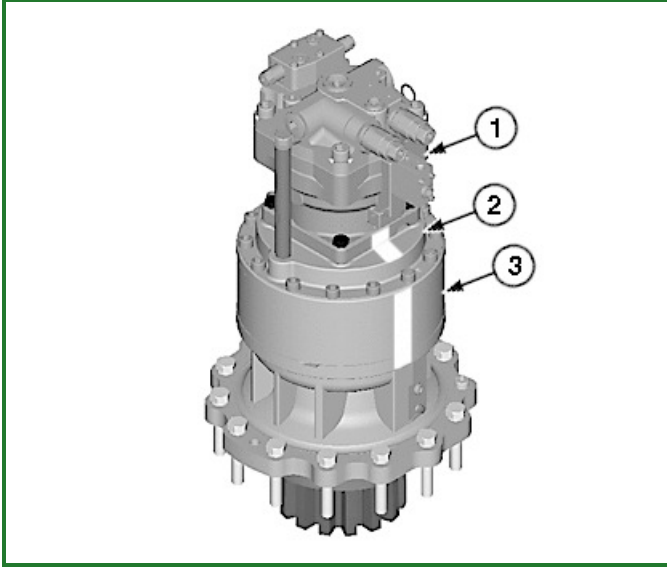


## Swing Gear Case Disassemble and Assemble

### Swing Gear Case Disassemble

1. Remove swing gear case. See [Swing Gear Case Remove and Install](#) . (Group 4350.)

2.



**TX1076476A-UN: Swing Motor and Gear Case**

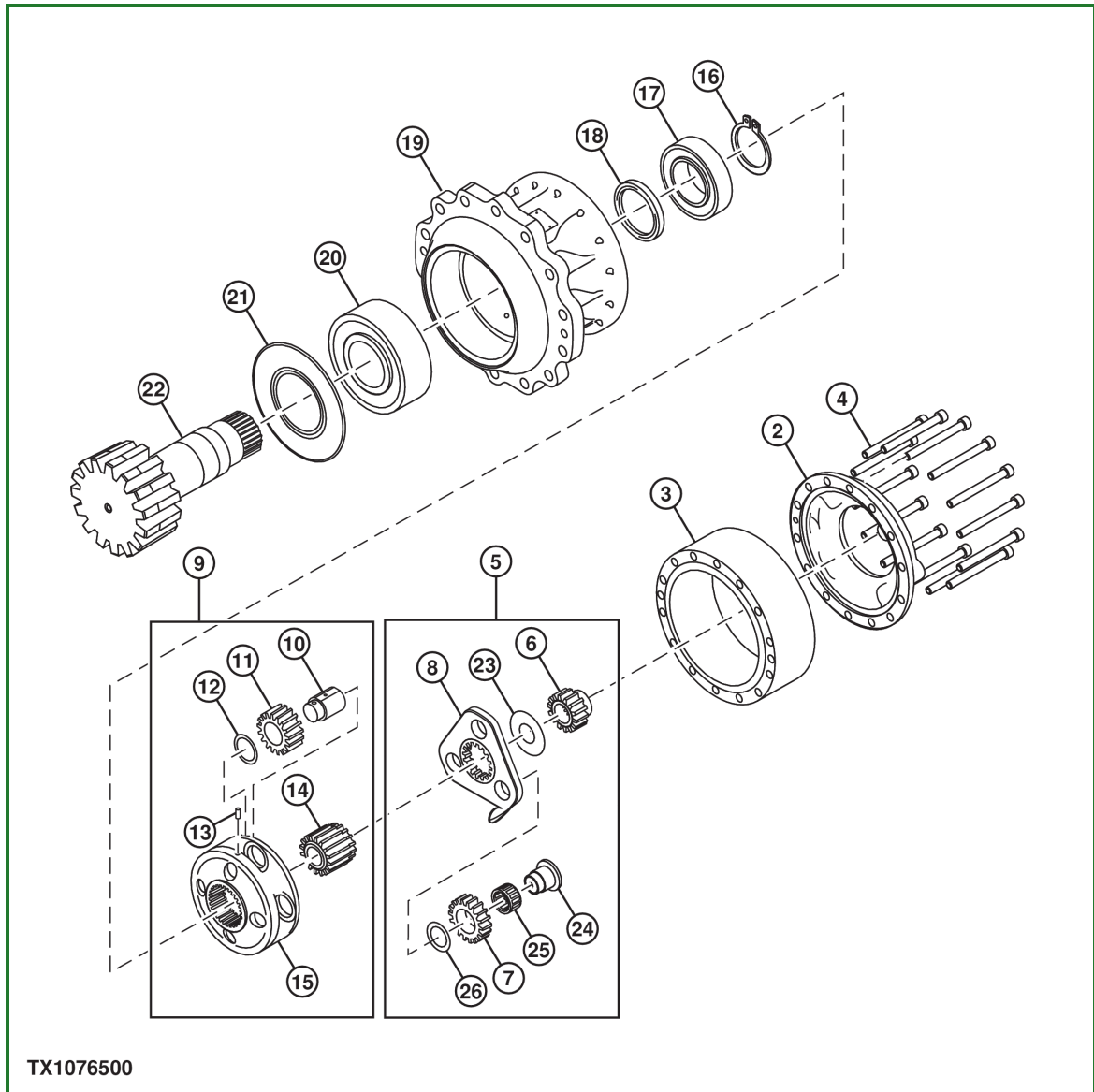
**LEGEND:**

- 1 - Swing Motor
- 2 - Gear Case Top Cover
- 3 - Gear Case Housing

Make alignment marks on swing motor (1), gear case top cover (2), and gear case housing (3) to aid in assembly.

3. Remove swing motor. See [Swing Motor and Park Brake Remove and Install](#) . (Group 4360.)

4.



**TX1076500-UN: Swing Gear Case**

**LEGEND:**

- 1 - Swing Motor
- 2 - Gear Case Top Cover
- 3 - Gear Case Housing
- 4 - Cap Screw (14 used)
- 5 - First Stage Planetary Gear Assembly
- 6 - Sun Gear
- 7 - Planetary Gear (3 used)
- 8 - Carrier
- 9 - Second Stage Planetary Gear Assembly
- 10 - Shaft (4 used)
- 11 - Planetary Gear (4 used)
- 12 - Washer (4 used)
- 13 - Pin (4 used)
- 14 - Sun Gear
- 15 - Carrier
- 16 - Snap Ring
- 17 - Upper Bearing
- 18 - Seal
- 19 - Housing Assembly