

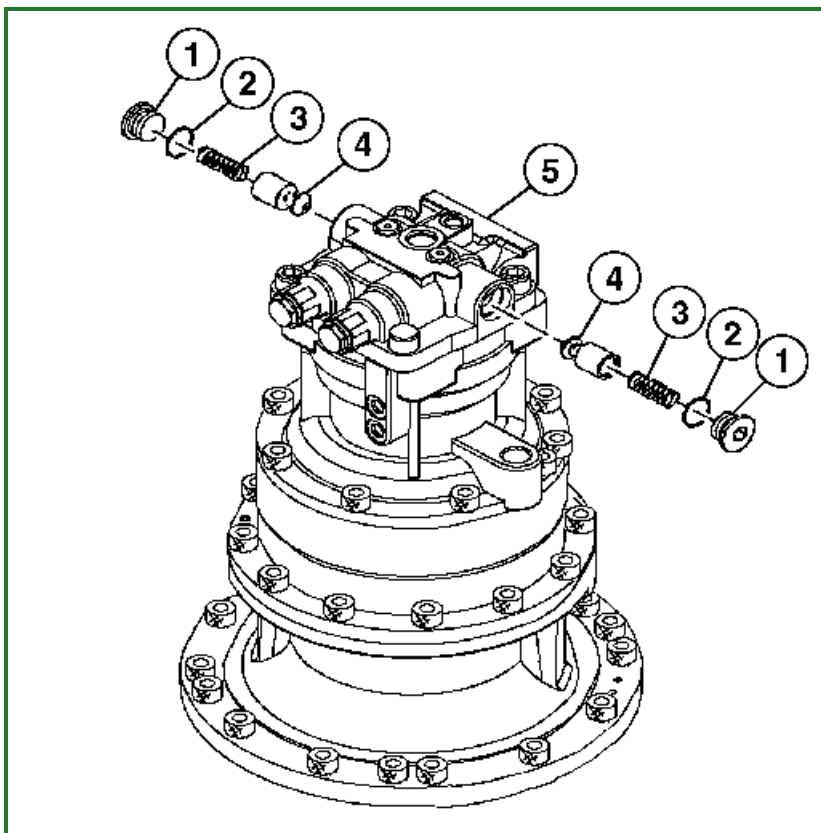
Make-Up Check Valve Disassemble and Assemble

-: Specifications

SPECIFICATIONS	
Make-Up Check Valve Torque	235 N·m 175 lb.-ft.

1. Park and prepare machine for service. [See Park and Prepare for Service Safely](#) . (Group 0001.)
2. Remove make-up check valves from swing motor and park brake (5). [See Crossover Relief Valve and Make-Up Check Valve Remove and Install](#) . (Group 4360.)

3.



TX1113765-UN: Make-Up Check Valve

LEGEND:

- 1 - Make-Up Check Valve Plug (2 used)
- 2 - O-Ring (2 used)
- 3 - Spring (2 used)
- 4 - Poppet (2 used)
- 5 - Swing Motor and Park Brake

Inspect O-rings (2), springs (3), and poppets (4) for wear and damage.

4. Replace parts as necessary.
5. Install O-rings, springs, poppets, and make-up check valve plugs (1).
6. Tighten make-up check valve plugs to specification. [See Crossover Relief Valve and Make-Up Check Valve Remove and Install](#) . (Group 4360.)

Item	Measurement	Specification
Make-Up Check Valve	Torque	235 N·m 175 lb.-ft.

Go to [Section_43:Group_4360](#)

DB95148,000150A-19-20120711