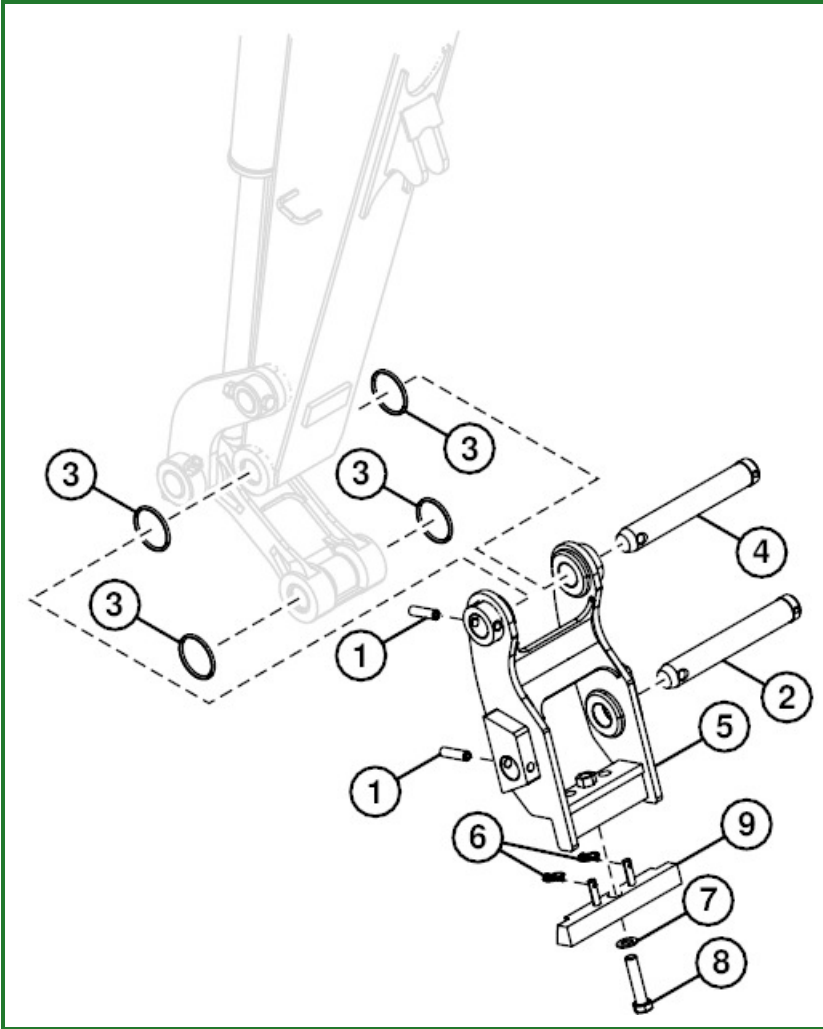


Bucket Quick Coupler Remove and Install



TX1191475-UN: Quick Coupler

LEGEND:

- 1 - Spring Pin (2 used)
- 2 - Center Link Pin
- 3 - O-Ring (4 used)
- 4 - Arm Pin
- 5 - Quick Coupler
- 6 - Pin (2 used)
- 7 - Washer
- 8 - Cap Screw
- 9 - Bar

1. Park and prepare machine for service safely. [See Park and Prepare for Service Safely](#) . (Group 0001.)
2. Remove bucket. [See Installing Bucket With Quick Coupler](#) . (Operator's Manual.)
3. Lower boom to ground.
4. Remove spring pin (1), center link pin (2), and O-rings (3).
5. Remove spring pin (1), arm pin (4), and O-rings (3).
6. Remove quick coupler (5).

7. Inspect pins and bushings. [See Inspect Pins and Bushings—Front Attachment and Blade](#) . (Group 3340.)
8. Repair or replace parts as necessary.
9. Clean pins and bushings.
10. Apply multipurpose grease to pins.
11. Install quick coupler.
12. Install O-rings, arm pin, and spring pin (1).
13. Install O-rings, center link pin, and spring pin (1).
14. Install bucket. [See Installing Bucket With Quick Coupler](#) . (Operator's Manual.)
15. Apply grease to all joints. [See Lubricate Front End Pin Joints](#) . (Operator's Manual.)

Go to [Section_33:Group_3340](#)

JL58967,000026F-19-20150505