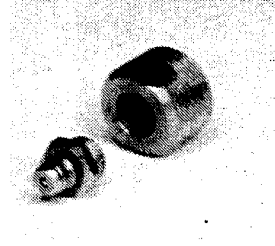


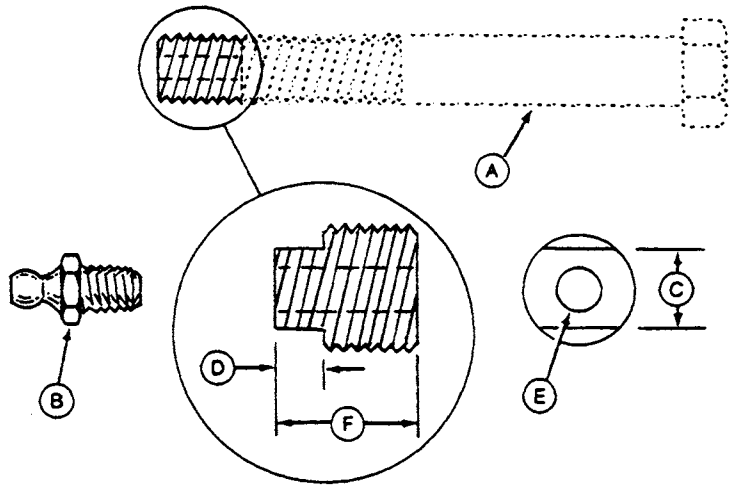
### Fitting, MFWD Pivot Pin Adapter

This tool is used to remove MFWD front axle pivot pin from axle housing.

Material: 19M7906 Axle Pivot Retaining Capscrew  
JD5815 Grease Fitting

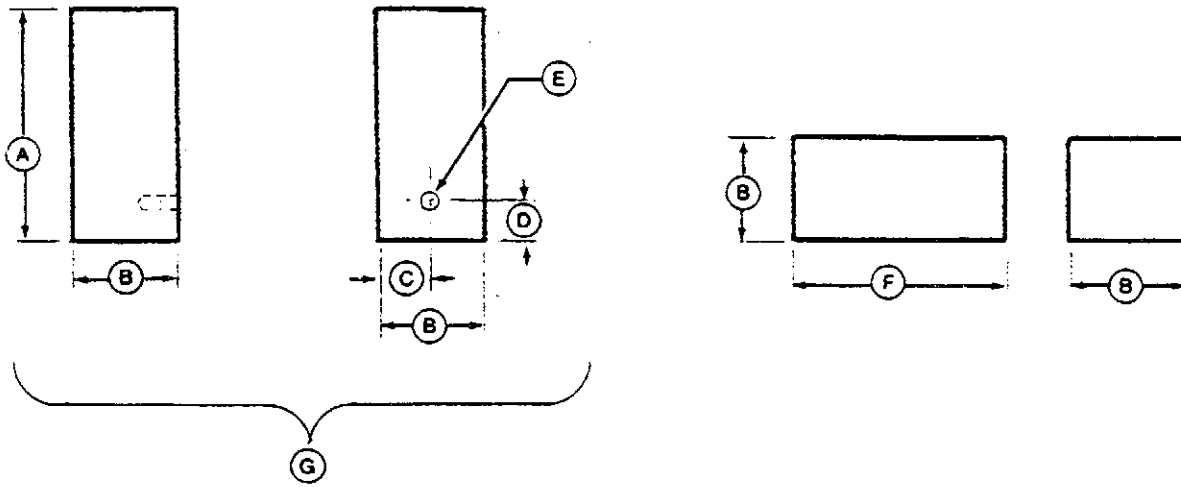


- A—19M7906 Cap Screw
- B—JD5815 Grease Fitting
- C—16 mm (5/8 in.)
- D—9.5 mm (3/8 in.)
- E—5/16 in.—1/8 NPTF Tap
- F—19.1 mm (3/4 in.)

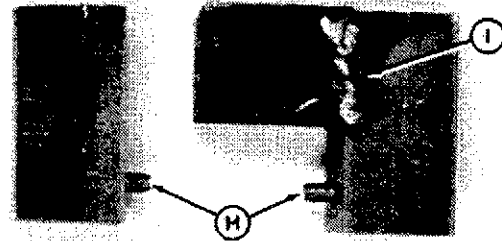


AC1;RW1092 5,RW1092 4 99U;99100 28 250985

### HOLDING TOOL, SCV COUPLER



- A—51 mm (2 in.)
- B—25.4 mm (1 in.)
- C—13 mm (1/2 in.)
- D—9.5 mm (3/8 in.)
- E—5/32 in. drill (Drill deep enough so pins protrude approximately 6 mm (1/4 in.))
- F—32 mm (1-1/4 in.)
- G—Two (2) required
- H—Headed pins with heads cut off.  
Press in so 6 mm (1/4 in.) protrudes.
- I—Weld (both sides)



Material: 1 x 1 x 5-1/4 in. square bar stock  
Two (2)—5/32 in. headed pins with heads cut off

This tool is used for holding serviceable coupler during disassembly and assembly.