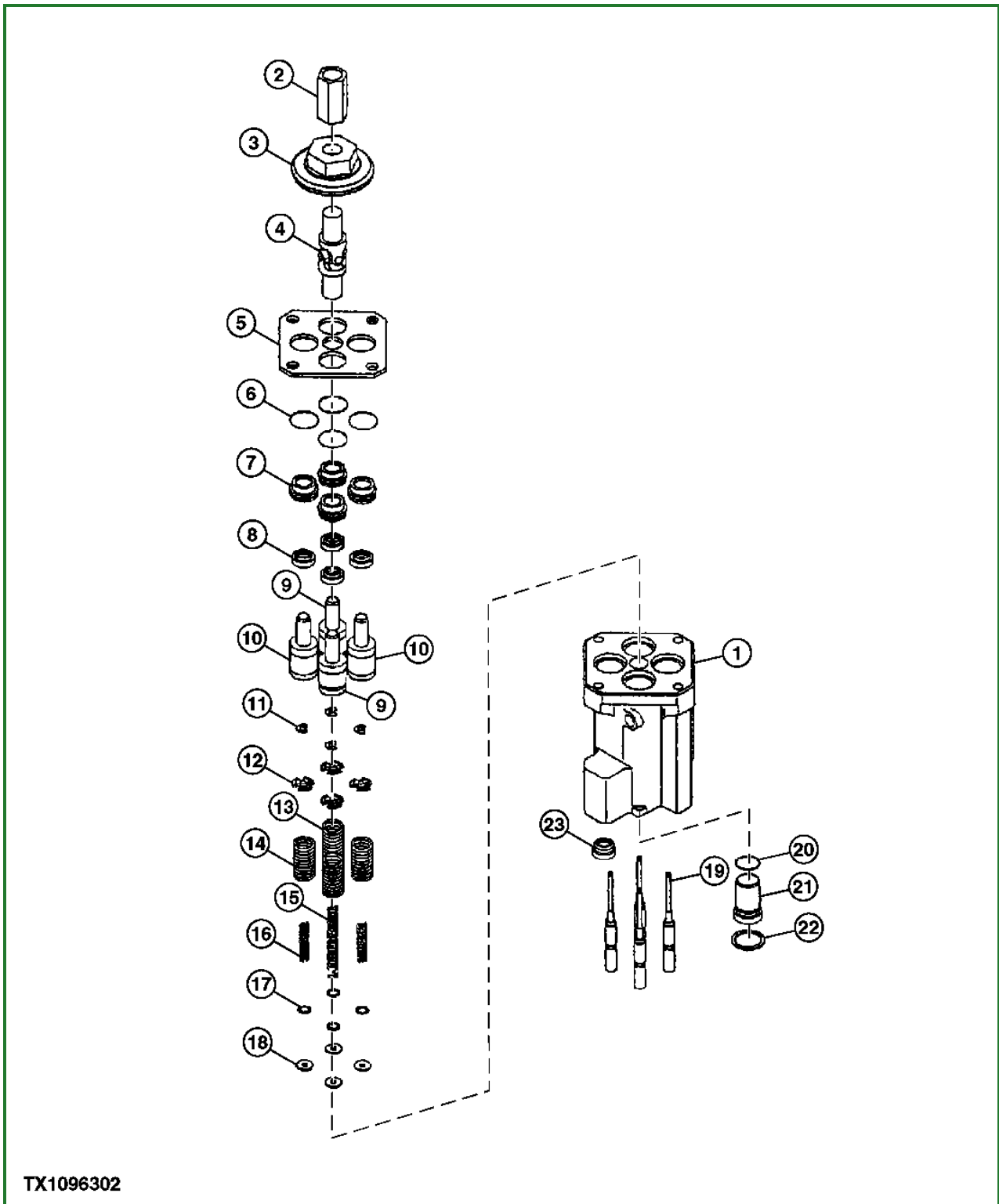


Pilot Valve (Left and Right) Disassemble and Assemble



TX1096302-UN: Pilot Control Valve

LEGEND:

- 1 - Housing
- 2 - Coupling
- 3 - Cam
- 4 - Universal Joint
- 5 - Plate
- 6 - O-Ring (4 used)
- 7 - Sleeve (4 used)
- 8 - Oil Seal (4 used)

- 9 - Pusher (2 used)
- 10 - Pusher (2 used)
- 11 - Snap Ring (4 used)
- 12 - Spring Guide (4 used)
- 13 - Return Spring (2 used)
- 14 - Return Spring (2 used)
- 15 - Balance Spring (2 used)
- 16 - Balance Spring (2 used)
- 17 - Shim (4 used)
- 18 - Spacer (4 used)
- 19 - Spool (4 used)
- 20 - O-Ring
- 21 - Plug
- 22 - Snap Ring
- 23 - Plug

-: Specifications

SPECIFICATIONS	
Plug Torque	20 N·m 178 lb·in
Universal Joint Torque	25 N·m 222 lb·in
Cam-to-Pusher Clearance	0—0.2 mm 0—0.008 in.
Coupling-to-Cam and Universal Joint Torque	70 N·m 52 lb·ft

-: Essential Tools

ESSENTIAL TOOLS
ST4145 Spool Holder
ST4146 Spring Compressor
ST4144 Snap Ring Holder

-: Other Material

OTHER MATERIAL
TY6341 Multipurpose SD Polyurea Grease
271 Loctite® Thread Lock and Sealer (high strength)

1. Remove pilot valve (left and right). See [Pilot Valve \(Left and Right\) Remove and Install](#) . (Group 3360.)
2. Remove cam (3) from universal joint (4).

3.

NOTE:

Do not remove universal joint (4) unless worn or damaged