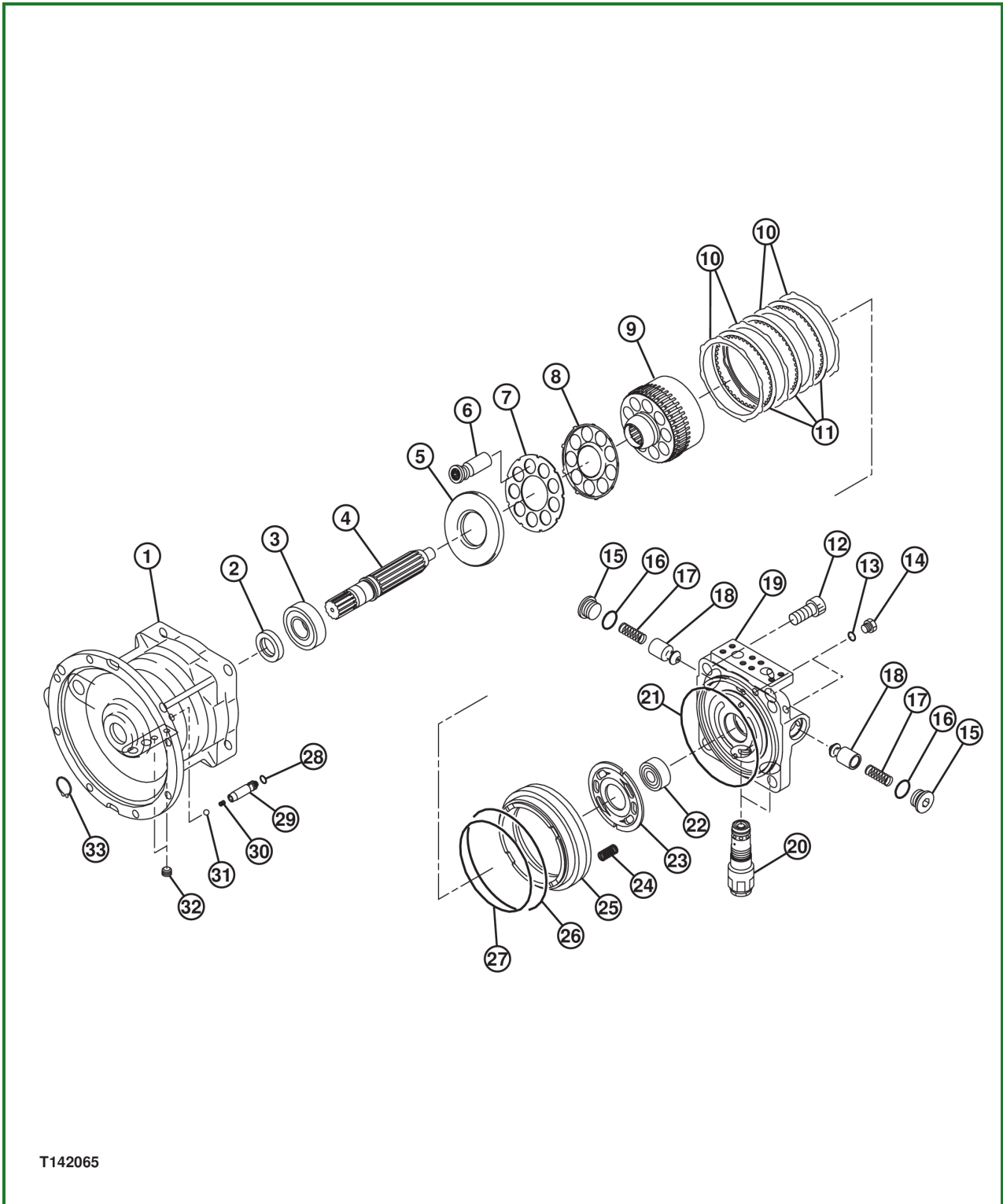


Swing Park Brake Check Valve and Orifice Remove and Install



T142065

T142065-UN: Swing Motor and Park Brake

LEGEND:

- 1 - Case
- 2 - Oil Seal
- 3 - Bearing
- 4 - Shaft
- 5 - Shoe Plate
- 6 - Plunger (9 used)
- 7 - Plate
- 8 - Retainer

- 9 - Rotor
- 10 - Plate (4 used)
- 11 - Friction Plate (3 used)
- 12 - Cap Screw (4 used)
- 13 - O-Ring (2 used)
- 14 - Plug (2 used)
- 15 - Plug (2 used)
- 16 - O-Ring (2 used)
- 17 - Spring (2 used)
- 18 - Poppet (2 used)
- 19 - Valve Casing
- 20 - Relief Valve (2 used)
- 21 - O-Ring
- 22 - Bearing
- 23 - Valve Plate
- 24 - Spring (24 used)
- 25 - Brake Piston
- 26 - O-Ring
- 27 - O-Ring
- 28 - O-Ring
- 29 - Piston
- 30 - Spring
- 31 - Ball
- 32 - Plug (2 used)
- 33 - Snap Ring

1. Park and prepare machine for service safely. [See Park and Prepare for Service Safely](#) . (Group 0001.)
2. Remove swing motor. [See Swing Motor and Park Brake Remove and Install](#) . (Group 4360.)
3. Remove valve casing (19) from swing motor. [See Swing Motor and Park Brake Disassemble](#) . (Group 4360.)

4.

NOTE:

The filter and orifice are installed to piston. Replace as an assembly.

Remove piston (29).

5. Remove spring (30) and ball (31).
6. Remove O-ring (28).
7. Inspect swing park release valve parts and ball seat. Replace parts as necessary.
8. Install O-ring.
9. Install ball, spring, and piston.
10. Install valve casing to swing motor. [See Swing Motor and Park Brake Assemble](#) . (Group 4360.)