

Pilot Accumulator Remove and Install

MACHINE PREPARATION

1. Park and prepare machine for service. See [Park and Prepare for Service Safely](#) . (Group 0001.)

2.

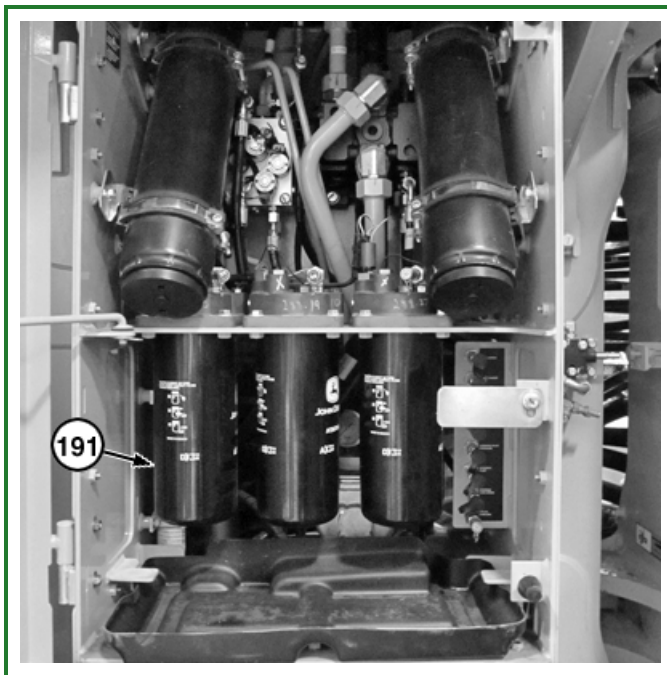
⚠ CAUTION:

Prevent possible injury from pressurized fluid discharge. Stop engine and relieve system pressure before disconnecting or connecting fluid lines. Tighten all connections before applying pressure.

Stop engine and relieve hydraulic system pressure. See [Hydraulic System Pressure and Accumulators Discharge](#) . (Group 9025-25.)

3. Turn battery disconnect switch to OFF position. See [Battery Disconnect Switch](#) . (Operator's Manual.)
4. Open hydraulic cabinet door.

5.



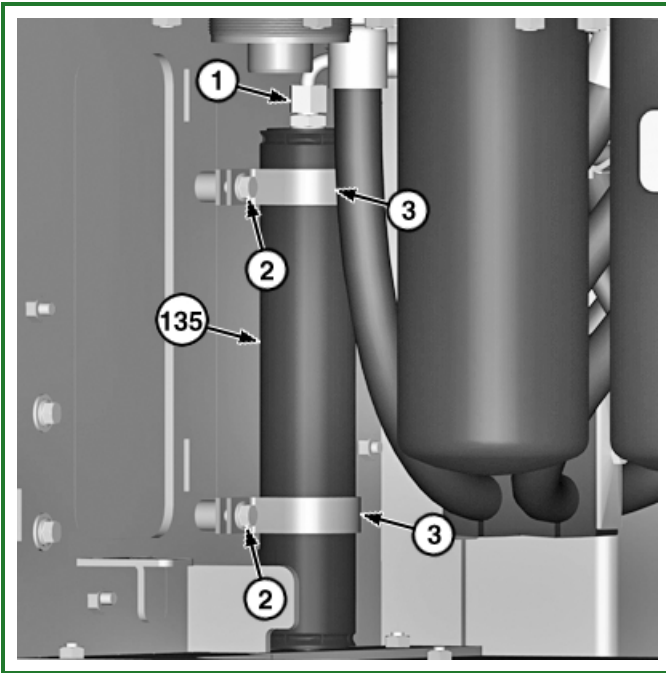
TX1196771A-UN: Right Rear Axle Oil Filter

LEGEND:

191 - Right Rear Axle Oil Filter

Remove right rear axle oil filter (191).

Additional Information



TX1196775A-UN: Pilot Accumulator

LEGEND:

- 1 - Hydraulic Line
- 2 - Cap Screw (2 used)
- 3 - Clamp (2 used)
- 135 - Pilot Accumulator

IMPORTANT:

Prevent hydraulic system contamination. Absolute cleanliness is essential when working on hydraulic components. Clean component and adjacent areas before starting work. Close all openings using caps and plugs.

Clean component and adjacent areas before starting work. Close all openings using caps and plugs.

Go to [Section_31:Group_3160](#)

BS13840,00003B2-19-20150918