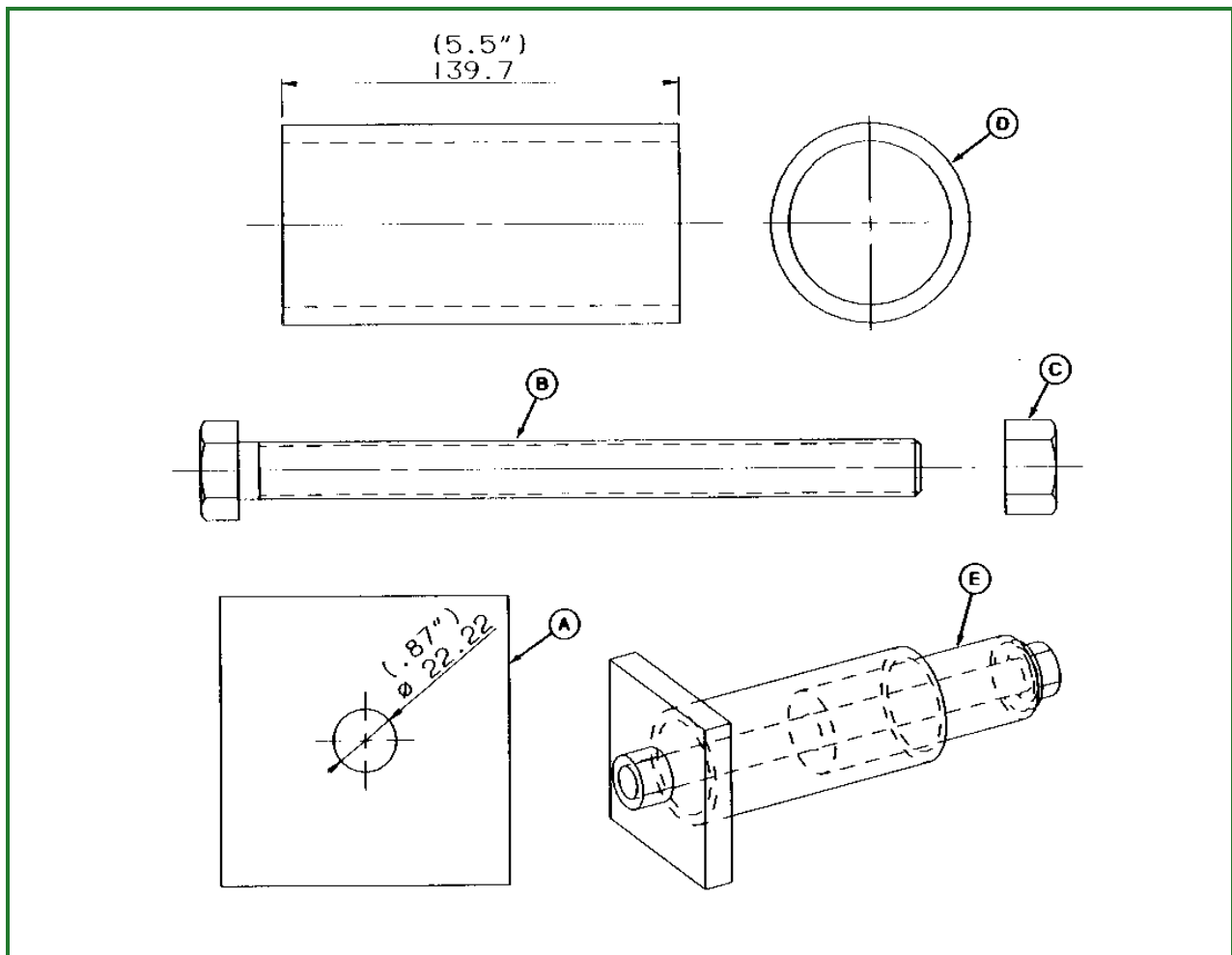


DFRW106—Front Axle Rear Pivot Pin Tool

**RW25376-UN: Front Axle Rear Pivot Pin Tool****LEGEND:**

- A - 4 x 4 x 5/8 in Steel Plate
- B - 19M7779 Cap Screw
- C - 14M7277 Nut
- D - 5-1/2 in Pipe
- E - Front Axle Rear Pivot Pin

NOTE:

Please note that tools manufactured for own purposes might also require a CE marking and a self-certification process. As a manufacturer you are responsible for complying with the applicable laws and regulations.

Material Required:

- 4 x 4 x 5/8 in Steel Plate
- M20 x 240 (19M7779) Cap Screw
- 14M7277 Nut
- 2-1/4 in (ID) x 2-3/4 in (OD) x 5-1/2 in Pipe
- 24M7242 Hardened Steel Washer (not illustrated)

Tool is used to remove and install rear pivot pin on front axle of two-wheel drive tractors.

[Go to Section_300:Group_05](#)

LN71218,000077E-19-20170620