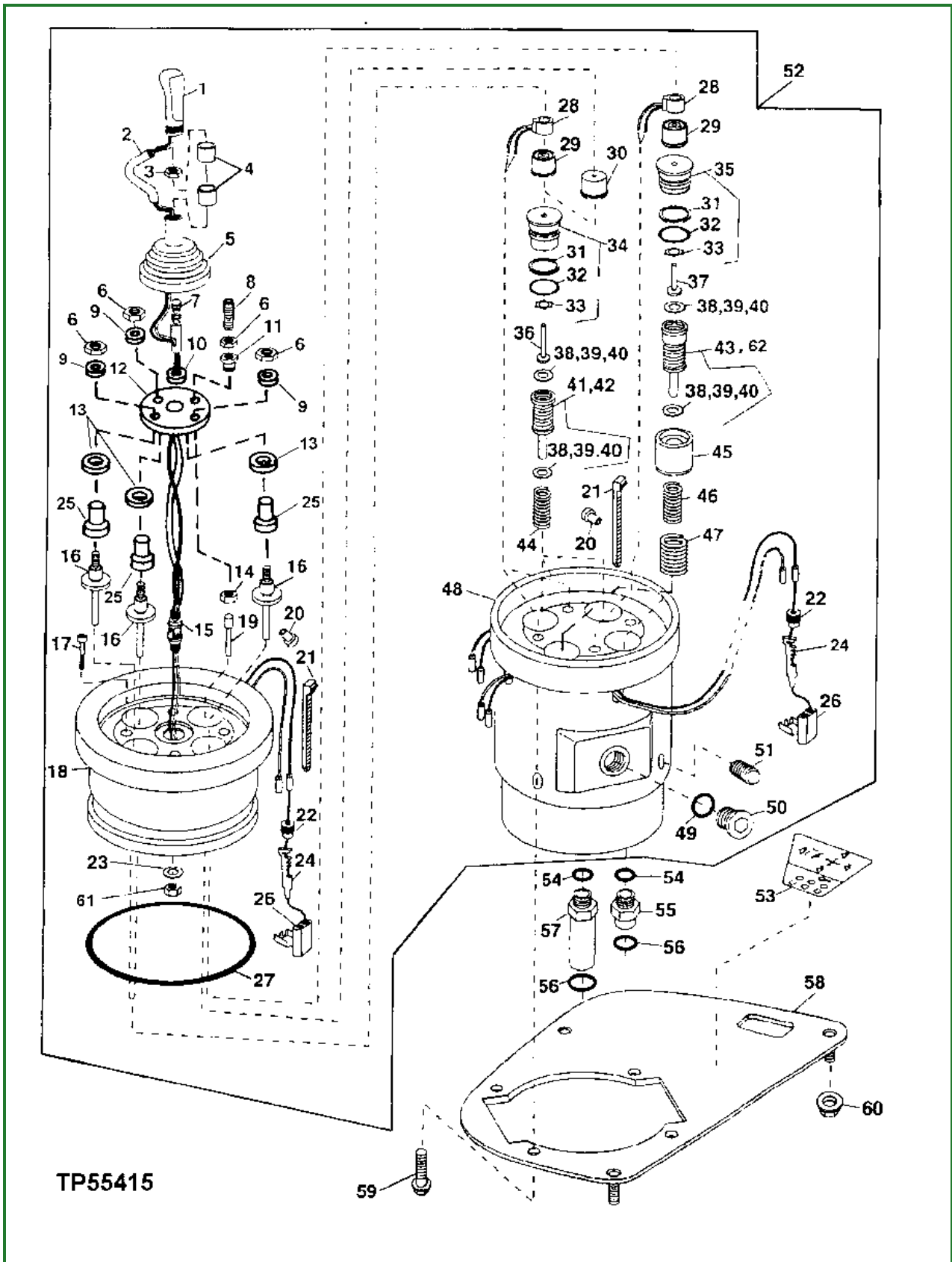


### Pilot Controller Disassemble and Assemble—Single Lever Controller (S.N. —590067)

Before Pilot Control Valve is disassembled the following checks should be done first to help isolate confirm the problem is in the pilot controller. **Perform Pilot Control Valve Pressure Test** . (Group 9025-25.) **Perform Pressure Reducing Valve Pressure Test** . (Group 9025-25.)



TP55415-UN: Single Lever (Joystick) Assembly

**LEGEND:**

1 - Grip

- 2 - Sleeve
- 3 - Nut
- 4 - Retainer
- 5 - Boot
- 6 - Nut (4 used)
- 7 - Lever
- 8 - Set Screw
- 9 - Washer
- 10 - Washer
- 11 - Plug
- 12 - Plate
- 13 - Washer
- 14 - Nut
- 15 - U-Join (center post)
- 16 - Ball joint socket (3 used)
- 17 - Cap Screw (4 used)
- 18 - Housing (top)
- 19 - Push Bar
- 20 - Grommet (4 used)
- 21 - Strap (4 used)
- 22 - Terminal Nipple (8 used)
- 23 - Washer
- 24 - Pin contact (8 used)
- 25 - Nut
- 26 - connector
- 27 - O-Ring
- 28 - Electrical Coil (3 used)
- 29 - Retainer (3 used)
- 30 - Tube
- 31 - Back Up Ring
- 32 - Seal
- 33 - Ring (2 used)
- 34 - Retainer (2 used) (Tool Carrier 1 used)
- 35 - Retainer (2 used) (Tool Carrier 3 used)
- 36 - Plunger (2 used) (Tool Carrier 1 used)
- 37 - Plunger (2 used) (Tool Carrier 3 used)
- 38 - Shim (as required) (0.1 mm / .004 in)
- 39 - Shim (as required) (0.2mm / .007 in)
- 40 - Shim (as required) (0.4mm / .015 in)
- 41 - Spool (2 used)
- 42 - Spool
- 43 - Spool
- 44 - Spring
- 45 - Feel Position Kit
- 46 - Spring
- 47 - Spring
- 48 - Housing
- 49 - O-Ring