

Inspect and Replace Hydraulic Lines Dual Mid-Mount Control Valve—Cab Tractors

1.

CAUTION:



X9811-UN: Escaping Fluid

Escaping fluid under pressure can penetrate the skin causing serious injury. Avoid the hazard by relieving pressure before disconnecting hydraulic or other lines. Tighten all connections before applying pressure. Search for leaks with a piece of cardboard. Protect hands and body from high pressure fluids.

If an accident occurs, see a doctor immediately. Any fluid injected into the skin must be surgically removed within a few hours or gangrene may result. Doctors unfamiliar with this type of injury should reference a knowledgeable medical source. Such information is available from Deere & Company Medical Department in Moline, Illinois, U.S.A.

Remove right rear wheel.

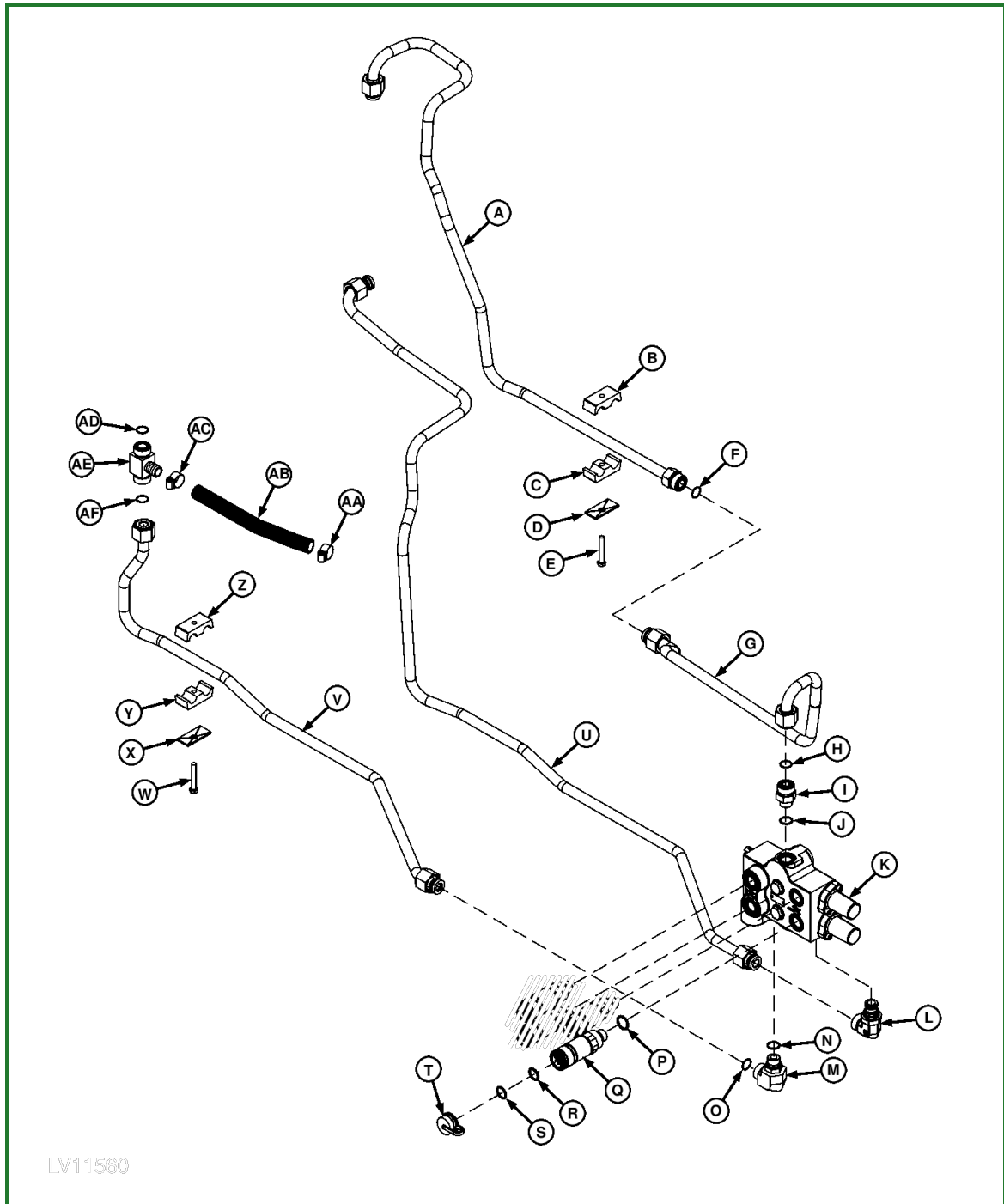
2. Operate Mid-Mount Controls to relieve any pressure in the system.

3. IMPORTANT:

Replace all O-rings. Damaged or used O-rings will leak.

NOTE:

If replacement of lines is necessary, drain transmission/hydraulic oil.



LV11560-UN: Cab Mid-Mount Lines

LEGEND:

- A - RCV-to-Mid-Mount Pressure Inlet Line
- B - Clamp
- C - Clamp
- D - Plate
- E - Cap Screw
- F - O-Ring
- G - RCV-to-Mid-Mount Pressure Inlet Line
- H - O-Ring
- I - Elbow Fitting
- J - O-Ring
- K - Mid-Mount Control Valve
- L - Elbow Fitting
- M - Elbow Fitting