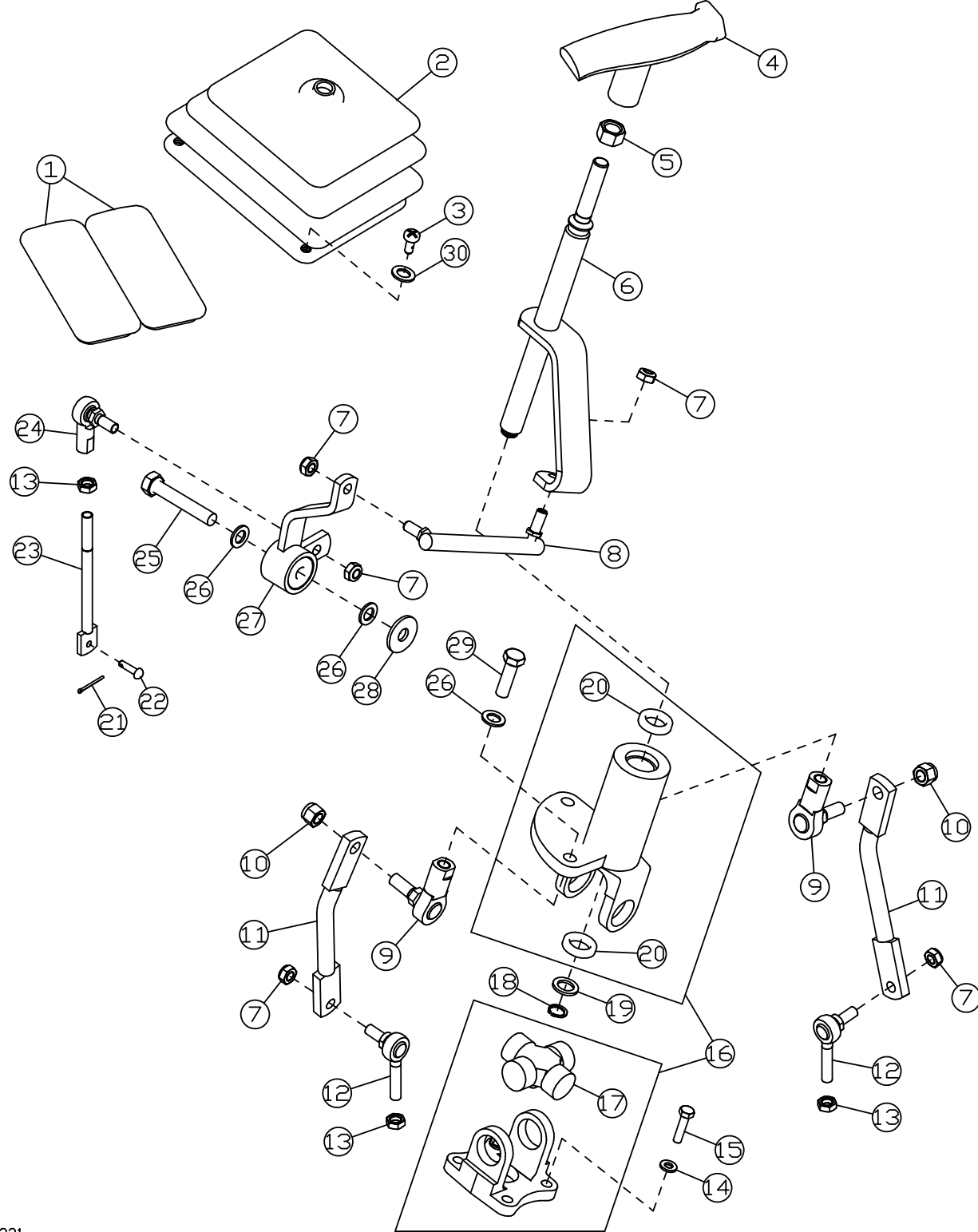


Hydraulic Control Lever Linkage Remove and Install



T141321

T141321—UN—07/AUG01

Continued on next page

CED.TX03768.2526 -19-12APR01-1/2

*Control Linkage*

- |   |   |  |  |
|---|---|--|--|
| 1— Grommet (2 used)<br>2— Boot<br>3— Cap Screw (4 used)<br>4— T-Bar Control Handle<br>5— Nut<br>6— Control Shaft<br>7— Lock Nut (5 used)<br>8— Stud Link Ball Joint | 9— Ball Joint (2 used)<br>10— Lock Nut (2 used)<br>11— Tilt Valve and Lift Section Link (2 used)<br>12— Ball Joint (2 used)<br>13— Nut (3 used)<br>14— Washer (4 used)<br>15— Cap Screw (4 used)<br>16— U-Joint Control Housing | 17— U-Joint<br>18— Snap Ring<br>19— Washer<br>20— Bearing (2 used)<br>21— Cotter Pin<br>22— Pin<br>23— Rod-to-Angle Valve Section Link<br>24— Ball Joint | 25— Cap Screw<br>26— Washer (4 used)<br>27— Bellcrank<br>28— Washer<br>29— Cap Screw (2 used)<br>30— Washer (4 used) |
|---|---|--|--|

1. Open access door to control valve.
2. Remove lock nuts (7) on tilt and lift valve ball joints (12).
3. Remove cotter pin (21) and pin (22) on angle valve rod.
4. Remove cap screw (25) and washer (26) from bellcrank (27).
5. Remove cap screws (15) and washers (14) from U-joint assembly.
6. Remove cap screws (3) and boot (2). Remove assembly.
7. Disassemble and assemble parts as required.
8. Tighten cap screws (15).

**T-Bar Control Valve Linkage—Specification**

Mount T-Bar Linkage- to-Hydraulic Tank Cap	
Screws—Torque.....	15 N·m 11 lb·ft

9. Tighten lock nuts (10) to specification.

**T-Bar Control Valve Linkage—Specification**

3/8 Lock Nut—Torque.....	35 N·m 26 lb·ft
--------------------------	--------------------

10. Tighten lock nuts (7) to specification.

**T-Bar Control Valve Linkage—Specification**

5/16 Lock Nut—Torque.....	19 N·m 14 lb·ft
---------------------------	--------------------

11. Adjust T-bar linkage. See Hydraulic Control Lever Linkage Adjustment. (Group 9025-20.)

CED, TX03768, 2526 -19-12APR01-2/2