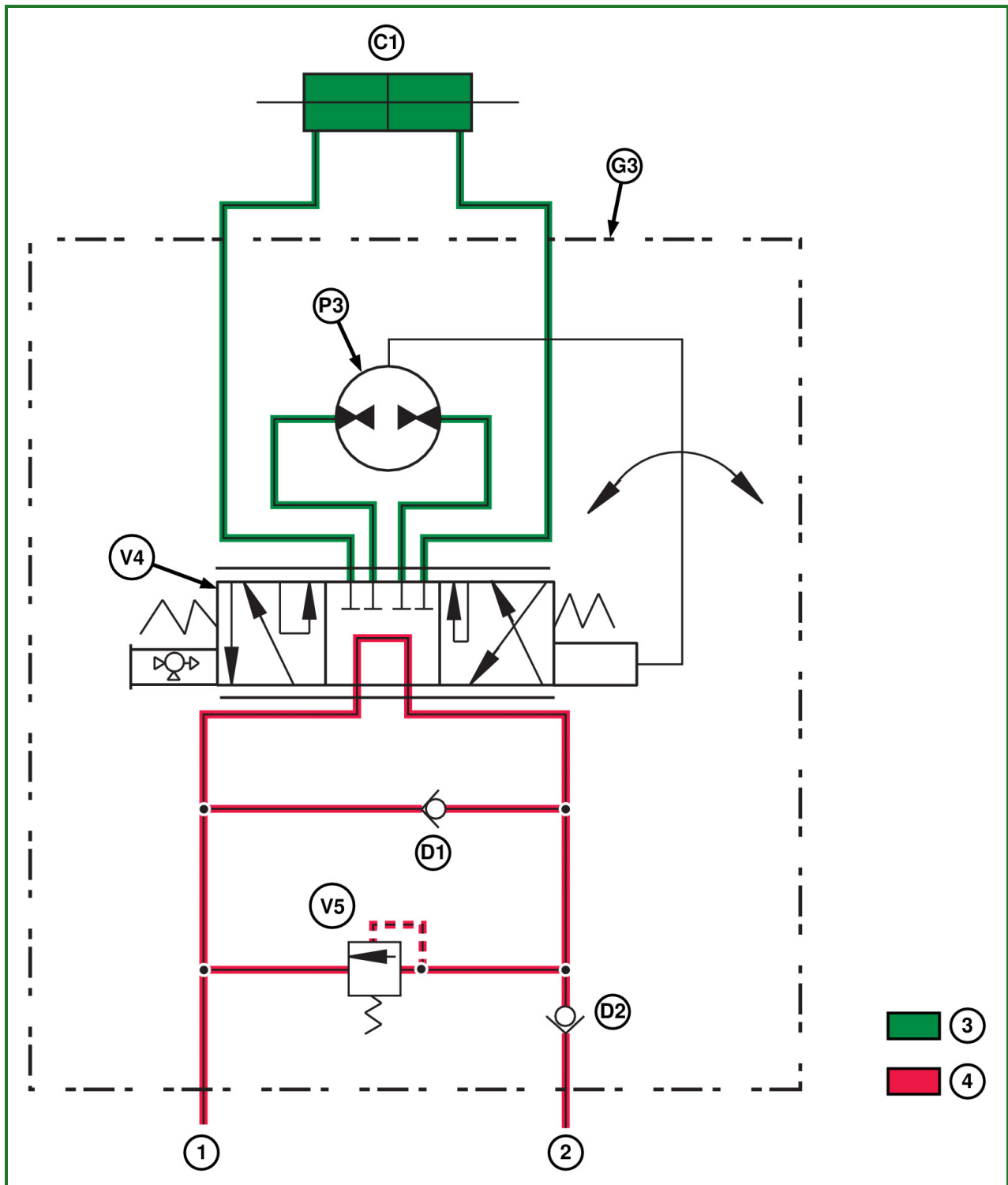


Steering - Steering Valve Theory of Operation



APY21895-UN: Oil Flow - Neutral Position (Engine ON)

LEGEND:

- C1 - C1 Steering Cylinder
- D1 - D1 Steering Check Valve
- D2 - D2 Inlet Check Valve
- G3 - G3 Steering Valve Assembly
- P3 - P3 Metering Pump
- V4 - V4 Steering Spool Valve
- V5 - V5 Steering Relief Valve
- 1 - To Cooler and Lube Circuits

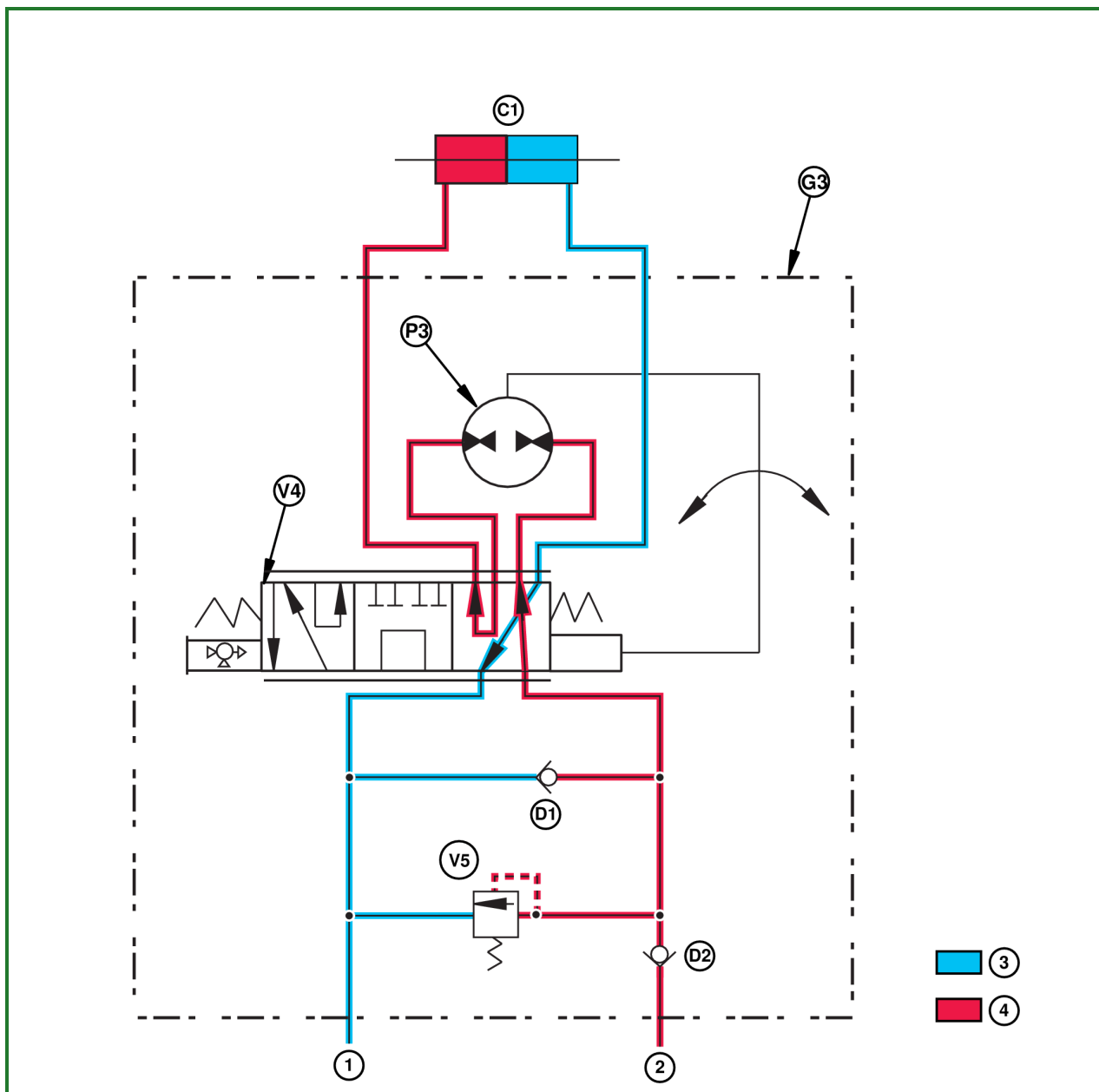
2 - From Steering Pump

3 - Trapped Oil

4 - Pressure Oil

Neutral Position (Engine ON)

Oil from the steering pump (2) flows into the steering valve housing (G3), inlet check valve (D2), steering spool valve (V4) before exiting valve housing. Oil in steering cylinder (C1), Metering Pump (P3), and lines is trapped.

**APY21896-UN: Oil Flow - Turn Position (Engine ON)****LEGEND:**

C1 - C1 Steering Cylinder

D1 - D1 Steering Check Valve

D2 - D2 Inlet Check Valve

G3 - G3 Steering Valve Assembly

P3 - P3 Metering Pump

V4 - V4 Steering Spool Valve

V5 - V5 Steering Relief Valve

1 - To Cooler and Lube Circuits