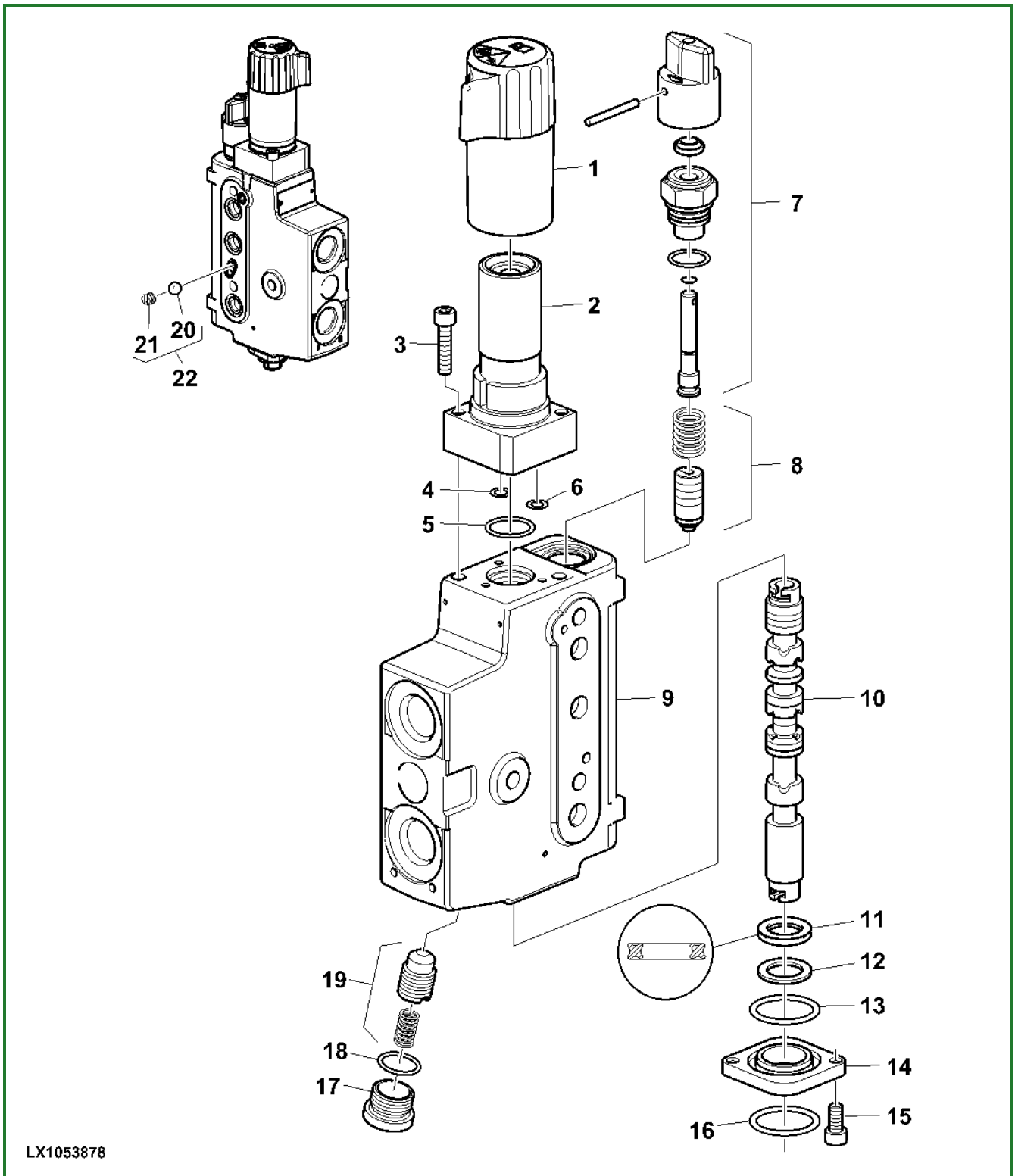


## Recondition the Mechanical Selective Control Valves (M-SCVs 200)



**LX1053878-UN: M-SCV 200 Exploded View**

**LEGEND:**

- 1 - Selector Knob
- 2 - Detent Housing
- 3 - Detent Housing Screw (2 Used)
- 4 - O-Ring
- 5 - O-Ring
- 6 - O-Ring
- 7 - Flow Control Valve
- 8 - Inlet Check Valve
- 9 - Housing
- 10 - Spool

- 11 - Seal Ring (Quad Ring)
- 12 - Back-Up Ring
- 13 - O-Ring
- 14 - Flange
- 15 - Flange Screw (2 Used)
- 16 - O-Ring
- 17 - Stopper Plug
- 18 - O-Ring
- 19 - Check Valve (Load Holding Valve)
- 20 - Ball
- 21 - Restrictor
- 22 - Check Valve (LS Passage)

1. Remove the selective control valves (SCV). (See corresponding procedure in this group.)
2. Remove individual parts as required, clean them, inspect them for wear or damage, and replace as necessary. Also check the valve seats and bores in housing (9) for damage.

If there is damage on:

- Inlet check valve (8), housing (9), or spool (10): the entire SCV assembly must be replaced.
- Detent housing (2) or flow control valve (7): both parts must be replaced as assemblies.

3. When assembling, note the following points.
4. Apply clean hydraulic oil to all internal parts before assembling them.
5. The valves must NOT jam in the housing bores.
6. Install detent housing (2).
  1. Position O-rings (4—6) on the detent housing (2).
  2. Align the detent housing (2): the bores on the detent housing and on housing (9) must match.
  3. Engage the detent shaft in the spool, making sure to pull the spool only far enough out of housing (9) to engage the detent shaft.
  4. Install detent housing screws (3).

| Item                  | Measurement | Specification          |
|-----------------------|-------------|------------------------|
| Detent Housing Screws | Torque      | 10 N·m<br>(88.5 lb·in) |

7. Align the lug of selector knob (1) with the groove on the detent housing (2) and put on the selector knob.
8. Install flow control valve (7).
  1. Unscrew the spindle with the knob all the way to the left stop.
  2. Screw the flow control freely into valve housing (9) by hand until it reaches its final position.
  3. Tighten the flow control valve.

| Item               | Measurement | Specification        |
|--------------------|-------------|----------------------|
| Flow Control Valve | Torque      | 55 N·m<br>(41 lb·ft) |

9. Do not twist seal ring (11) during installation.
10. Install flange (14) with O-ring (13) and flange screws (15).