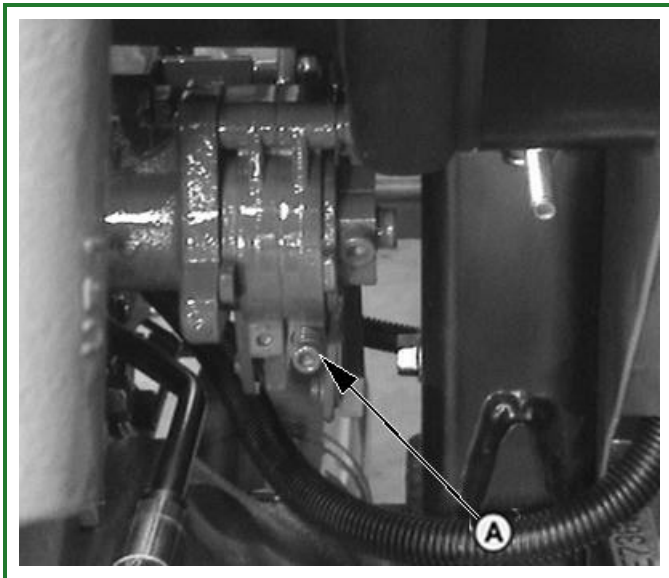
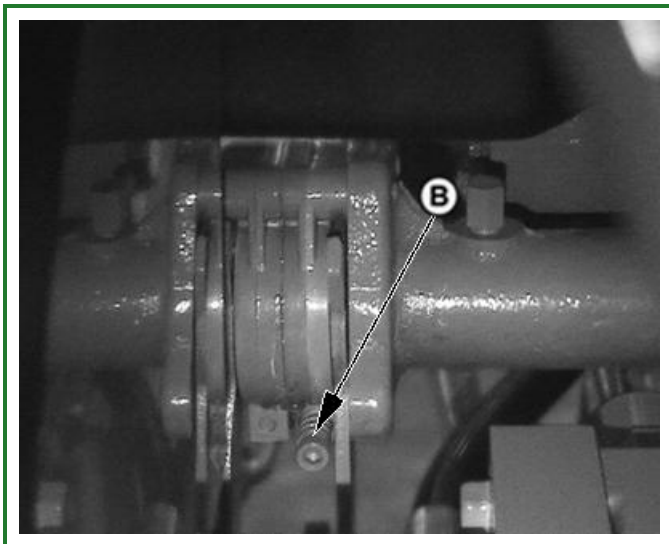


## Rockshaft Sensing Lever Friction Adjustment



PY4406-UN: Slide LV4543



**LEGEND:**

A - Adjustment Set Screw From Back Side Of Control Lever

B - Adjustment Set Screw From Front Side Of Control Lever

**REASON:**

To keep the rockshaft position and draft-sensing levers in their set positions.

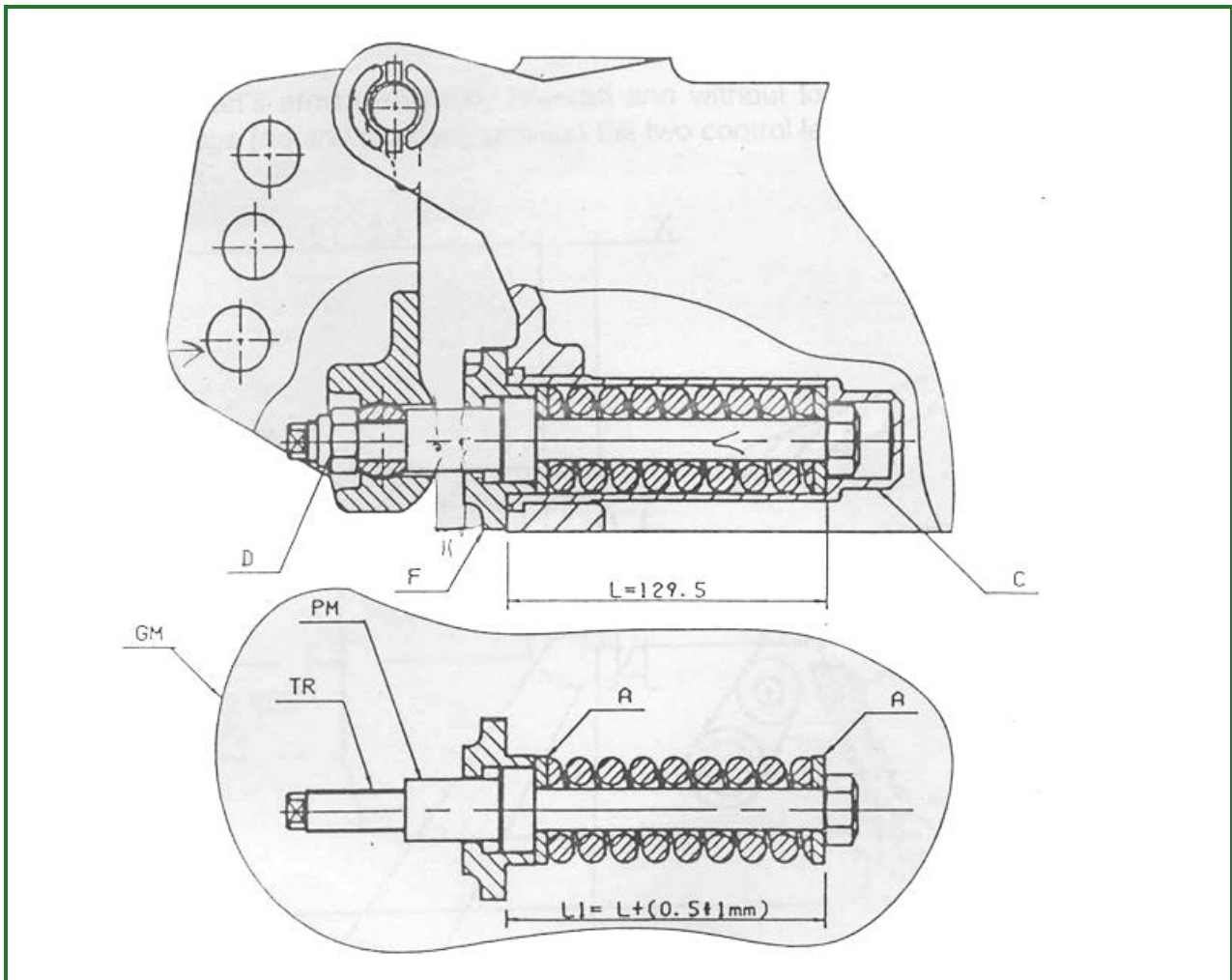
**PROCEDURE:**

1. Turn socket head screws (A) clockwise to increase friction, counterclockwise to decrease friction.

Go to [Section\\_270:Group\\_35](#)

PU00210,000059E-19-29SEP06

## Control of Assembly of Reaction Spring



PY1274-UN: Reaction Spring



PY1277-UN: Reaction Spring

**LEGEND:**

A - Washer

C - Cover

PM - Spring-Loader

TR - Rod

GM - Group

Before assembly, control that the pre-assembled components satisfy the measurement L1. This permits a pre-