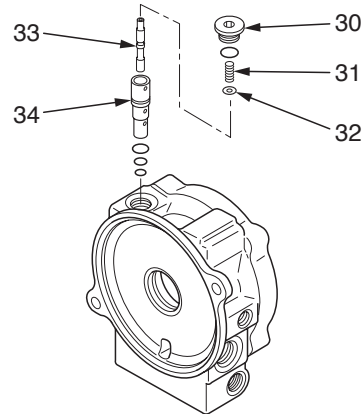


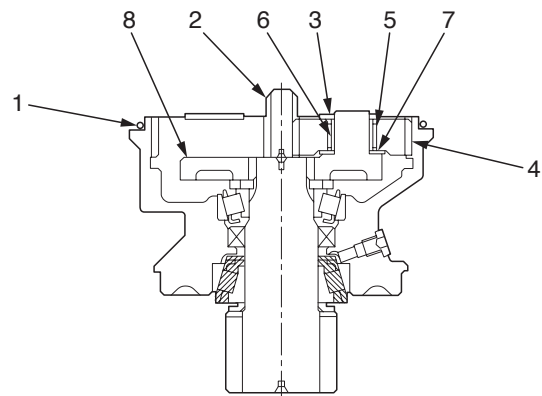
14. Disassemble the timer valve.
 - a. Remove the plug (30).
 - b. Remove the spring (31), washer (32) and spool (33).
 - c. Remove the sleeve (34).



E5D624

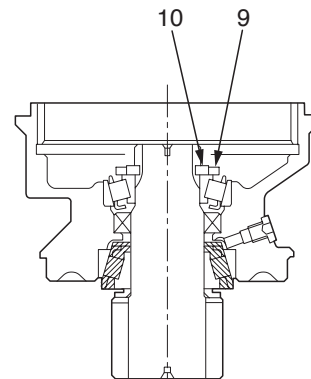
Reduction Gears

1. Remove the O-ring (1) and drive gear (2).
2. Remove the thrust plate (3), planetary gear (4), needles (5), inner race (6) and thrust washer (7) from the carrier (8).
3. Remove the carrier (8).



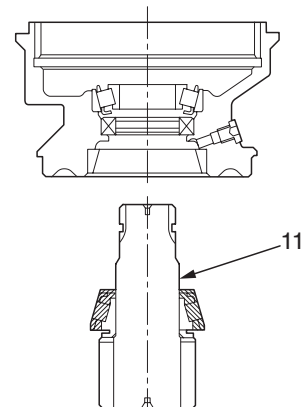
E5D625

4. Remove the collar (9) and plate (10).



E5D626

5. Remove the shaft (11).
 - Be careful not to miss the shaft.
 - If the shaft will not come out easily, lightly tap it with a plastic hammer.
 - To replace the taper roller bearing or collar, the case assembly should be replaced.

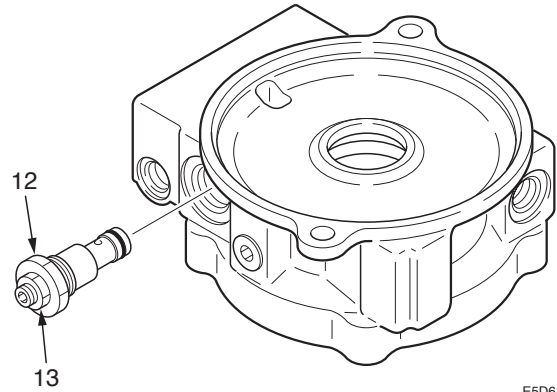


E5D627

Assembly

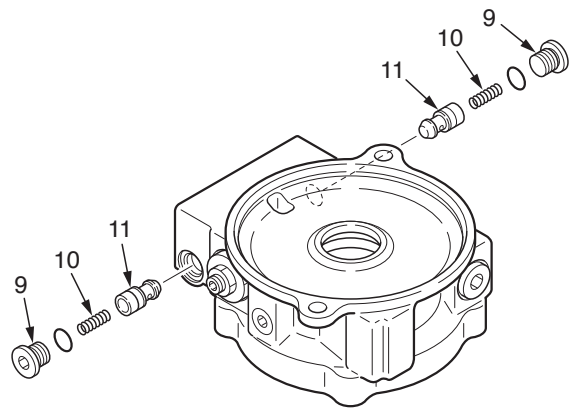
Brake Valve and Hydraulic Motor

1. Mount the relief valve assembly.
 - Tighten the plug (12).
 - Plug tightening torque:
 $157 \pm 10 \text{ N}\cdot\text{m}$ ($16 \pm 1 \text{ kgf}\cdot\text{m}$)



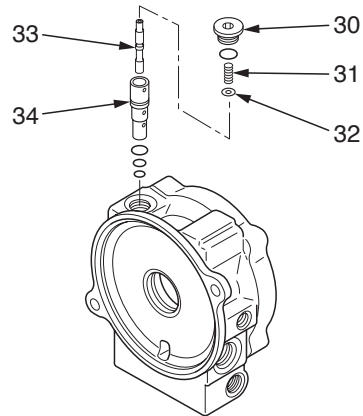
E5D616

2. Install the check valve (11) and the spring (10) in the housing.
3. Fit the O-ring to the plug (9) and mount them on the cover.
 - Plug tightening torque:
 $39.2 \pm 2 \text{ N}\cdot\text{m}$ ($4.0 \pm 0.2 \text{ kgf}\cdot\text{m}$)



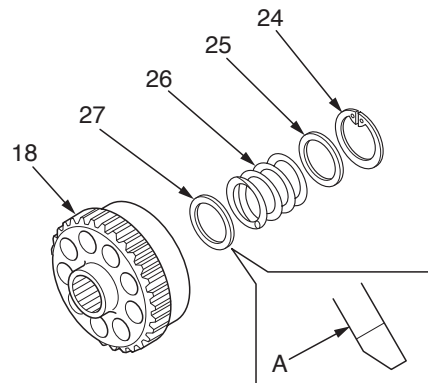
E5D615

4. Assemble the timer valve.
 - a. Fit the O-rings to the sleeve (34) and install them in the housing.
 - b. Fit the spool (33), washer (32) and spring (31) into the sleeve hole.
 - c. Mount the plug (30).
 - Plug tightening torque:
 $84 \pm 5 \text{ N}\cdot\text{m}$ ($8.5 \pm 0.5 \text{ kgf}\cdot\text{m}$)



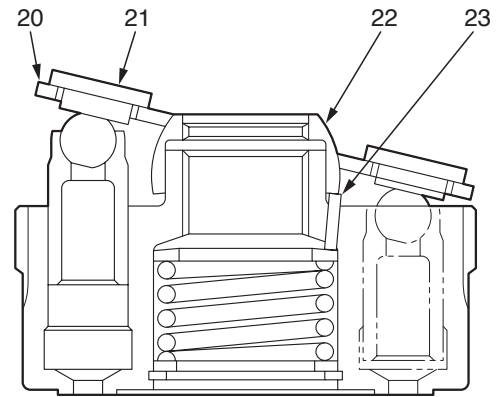
E5D624

5. Mount the retainer (27), spring (26), retainer (25) and snap ring (24) on the cylinder block (18).
 - The snap ring should be mounted while pushing the retainer (25).
 - Position the retainer (27) so that the tapered (A) side faces the cylinder block.



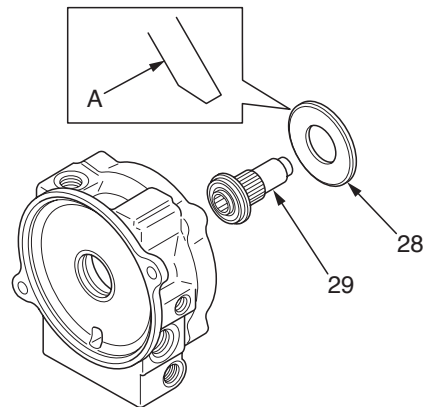
E5D622

6. Mount the pins (23) on the cylinder block.
 - Apply grease to the pins.
7. Mount the guide (22).
8. Fit the piston assembly (21) to the shoe holder (20) and mount them on the cylinder block.
 - Apply the hydraulic oil to the rotation section.



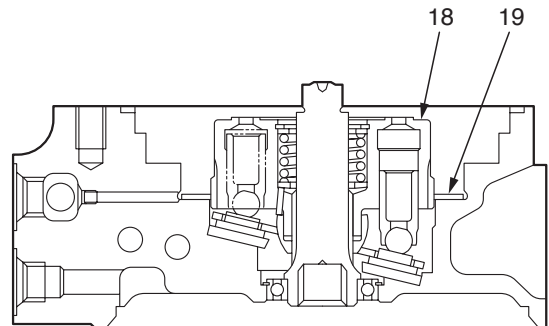
E5D621

9. Press fit the shaft (29) in the housing.
10. Install the swash plate (28) in the housing.
 - Apply grease to side A of the swash plate.



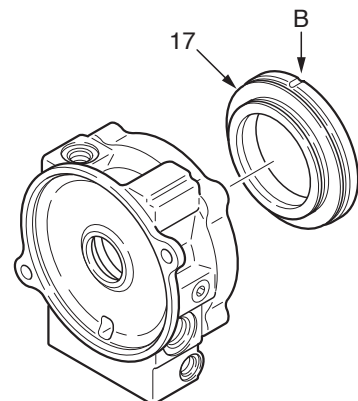
E5D623

11. Install the cylinder block (18) and disc (19) in the housing.
 - Be sure to position the pin (23) correctly.



E5D620

12. Fit the O-rings to the brake piston (17) and install them in the housing.
 - Position the pin hole (B) as shown in the figure.



E5D618