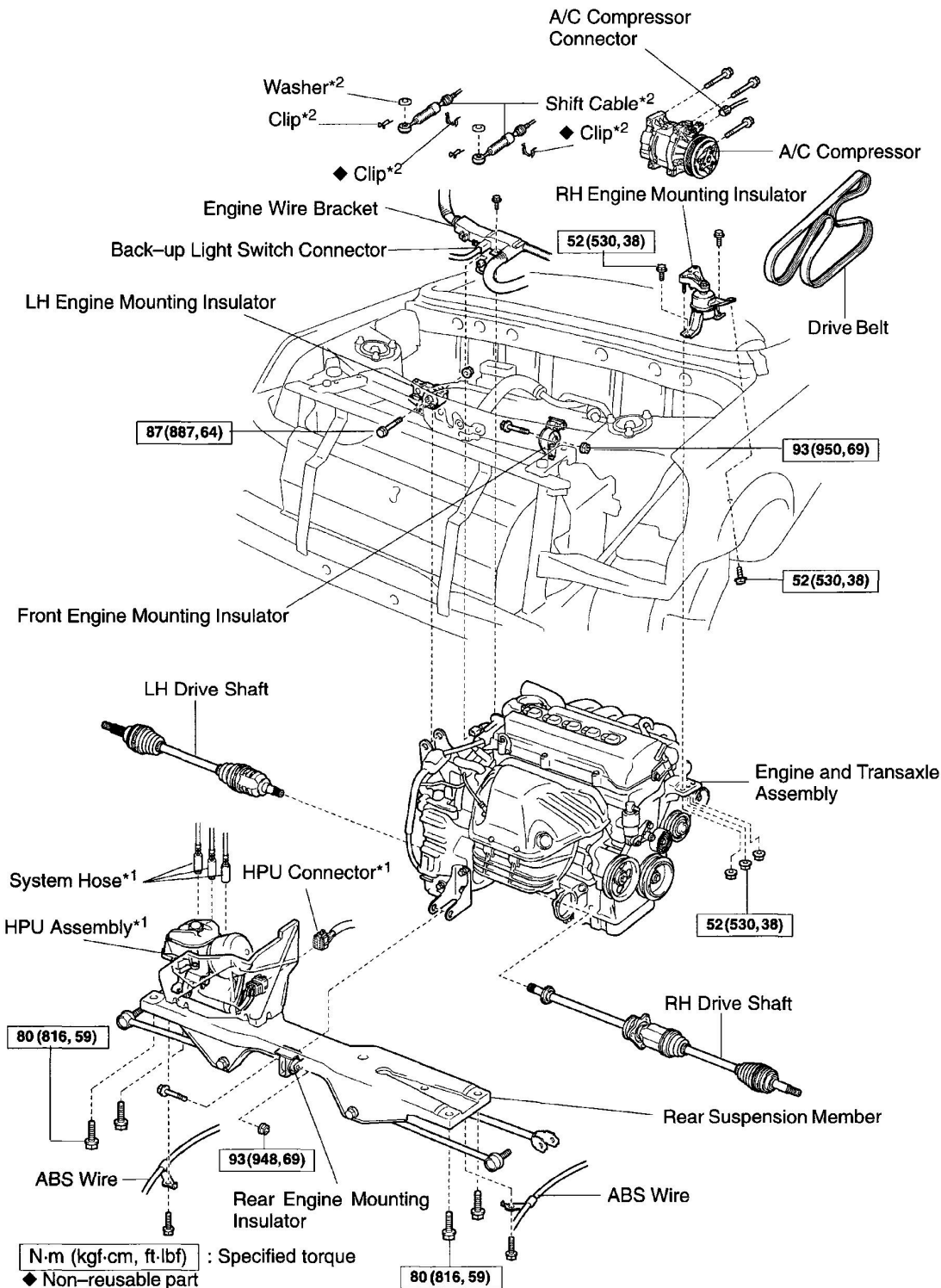


# 2005 Toyota MR2

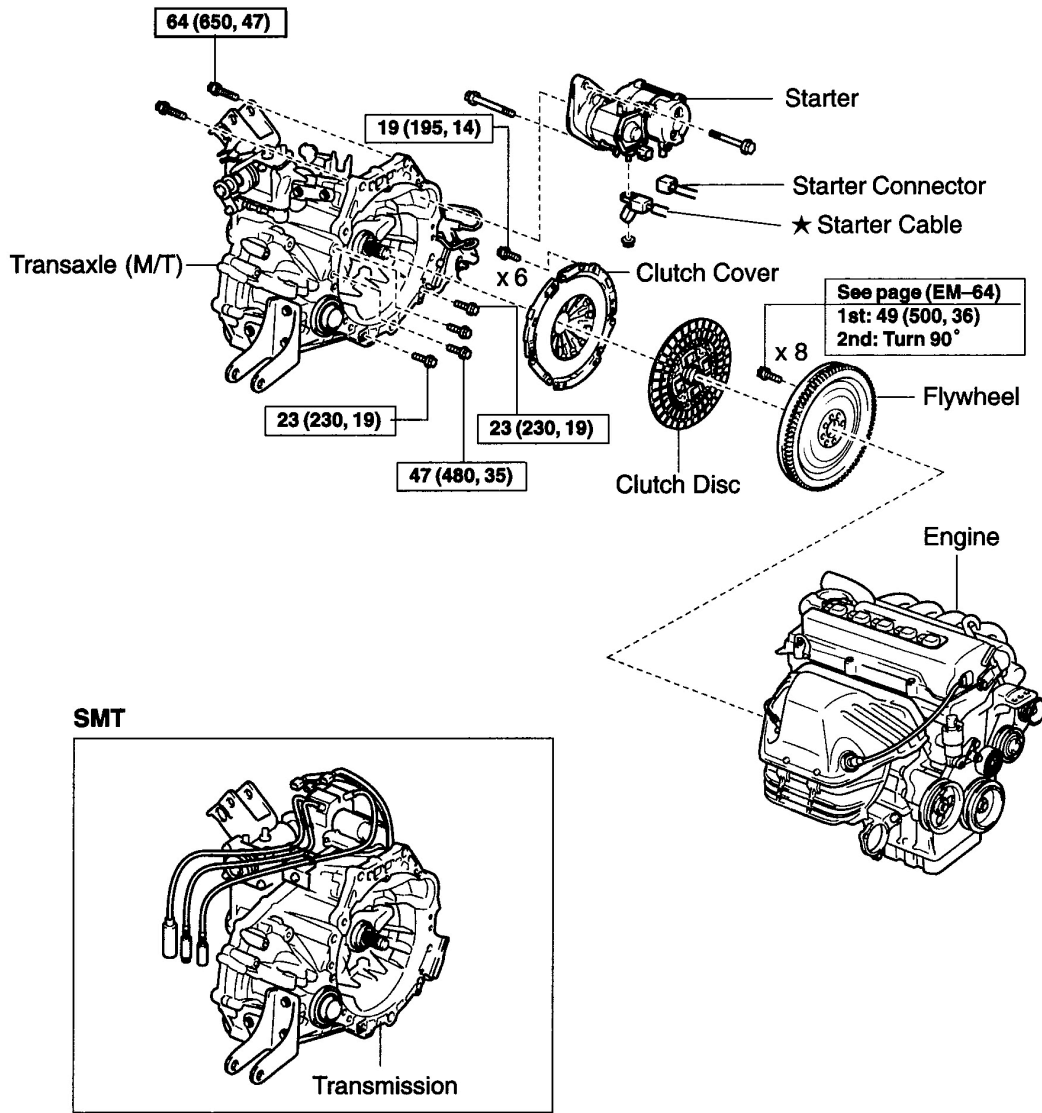
## 2005 ENGINE Engine Mechanical - MR2



G02630793

**Fig. 172: Identifying Engine Unit Components (4 Of 5)**

Courtesy of TOYOTA MOTOR SALES, U.S.A., INC.



N·m (kgf·cm, ft·lbf) : Specified torque

★ Precoated part

G02630794

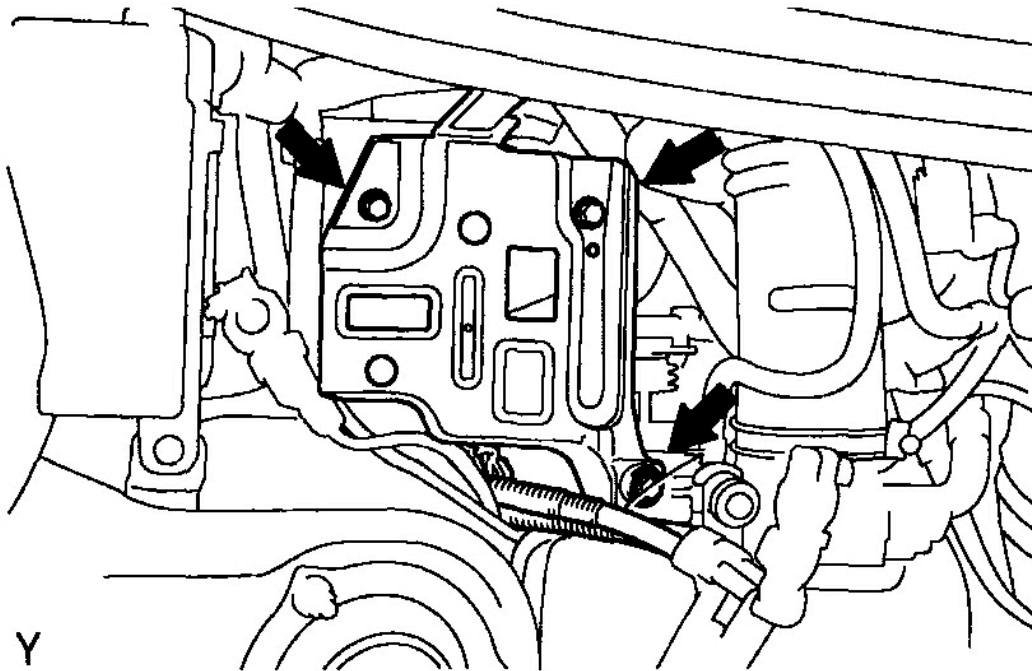
**Fig. 173: Identifying Engine Unit Components (5 Of 5)**  
 Courtesy of TOYOTA MOTOR SALES, U.S.A., INC.

**REMOVAL**

1. REMOVE ENGINE HOOD
2. REMOVE REAR SUSPENSION UPPER BRACE

**3. REMOVE ENGINE UNDER COVERS****4. SMT:****REDUCE ACCUMULATOR PRESSURE (See PRE-CHECK )****5. DRAIN ENGINE COOLANT****6. DRAIN ENGINE OIL****7. DRAIN TRANSAXLE OIL****8. REMOVE BATTERY BRACKET**

- a. Remove the battery and tray.
- b. Disconnect the battery wire from the battery bracket.
- c. Remove the 3 bolts and battery bracket.



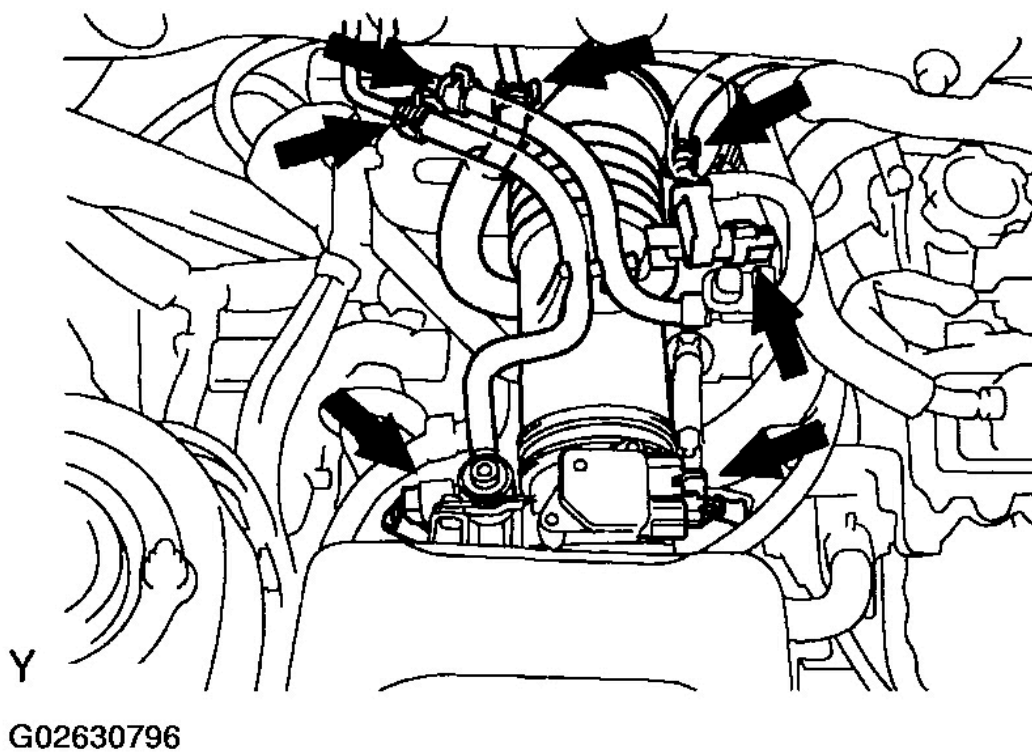
G02630795

**Fig. 174: Identifying Battery Bracket Bolts**  
Courtesy of TOYOTA MOTOR SALES, U.S.A., INC.

**9. REMOVE INTAKE AIR HOSE AND AIR CLEANER CAP ASSEMBLY**

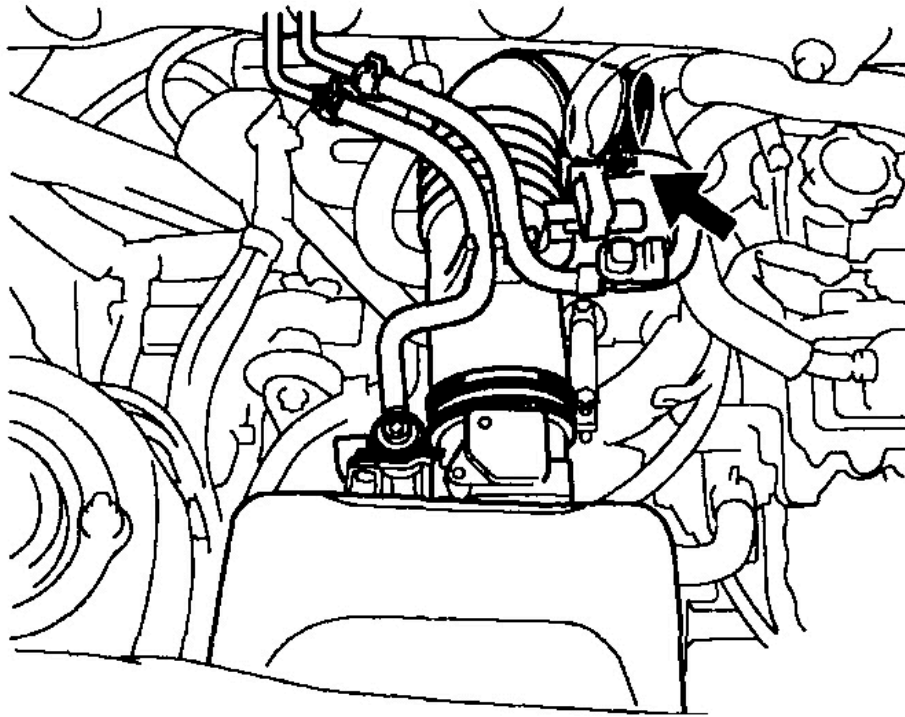
- a. Disconnect the MAF meter connector.
- b. Disconnect the VSV connector for EVAP.

- c. Disconnect the VSV connector for CCV.
- d. Disconnect the 4 vacuum hoses.
- e. Disconnect the 2 clamps and air cleaner cap.



**Fig. 175: Removing Intake Air Hose And Air Cleaner Cap Assembly**  
Courtesy of TOYOTA MOTOR SALES, U.S.A., INC.

- f. Loosen the hose clamp, and remove the intake air hose and air cleaner cap assembly from the throttle body.
  - g. Remove the air filter.
  - h. Remove the 2 bolts and air cleaner lower case.
10. **DISCONNECT ACCELERATOR CABLE**
11. **REMOVE REAR BUMPER COVER (See ENGINE UNIT)**



Y

G02630797

**Fig. 176: Disconnecting Accelerator Cable**  
Courtesy of TOYOTA MOTOR SALES, U.S.A., INC.

## 12. REMOVE FRONT EXHAUST PIPE

- a. Disconnect the heated oxygen sensor (bank 1 sensor 2) connector.
- b. Remove the 2 bolts, 2 springs and 3 nuts.
- c. Disconnect the ring, and remove the front exhaust pipe and 3 gaskets.