

9.6 Boot lid hinge counterbalance spring locations - Saloon models

- 1 Position for basic boot lid
- 2 Position for boot lid with outer plastic trim panel or spoiler
- 3 Position for boot lid with outer plastic trim panel and spoiler

to be refitted, tie a length of string to the end of the wiring. Then feed the wiring through the boot lid and untie the string, leaving it in position in the boot lid to assist refitting.

3 Mark the position of the hinges on the boot lid.

4 With the help of an assistant, support the weight of the boot lid, then unscrew the securing bolts from the hinges, and lift the boot lid from the vehicle. If the boot lid is to be refitted, rest it carefully on rags or cardboard, to avoid damaging the paint.

5 If a new boot lid is to be fitted, transfer all the serviceable fittings (rubber buffers, lock mechanism, etc.), to it.

6 If desired, the boot lid hinge counterbalance springs can be removed, but before unhooking them from the vehicle body, note their position so that they can be refitted in their original positions (see illustration). Use a lever to unhook the springs.

Refitting

7 Refitting is a reversal of removal, remembering the following points.

8 Align the hinges with the precisely made marks on the boot lid.

9 Where applicable, draw the central locking solenoid wiring through the boot lid, using the string.

10 If necessary, adjust the hinge bolts and the rubber buffer until a good fit is obtained with the boot lid shut.

11 If necessary, adjust the position of the lock striker on the body, to achieve satisfactory lock operation.



12.6A Prise off the rear roof trim panel . . .

10 Boot lid lock (Saloon models) - removal and refitting

Removal

- 1 Open the boot lid fully.
- 2 Unscrew the two securing screws, then withdraw the lock and disconnect the operating rod.

Refitting

- 3 Refitting is a reversal of removal, but if necessary adjust the position of the lock striker on the body, to achieve satisfactory lock operation.

11 Boot lid lock cylinder (Saloon models) - removal and refitting

Removal

- 1 Open the boot lid fully.
- 2 Unscrew the two securing nuts, then withdraw the lock cylinder complete with the housing, and disconnect the operating rods(s).
- 3 To remove the lock cylinder from the housing, insert the key into the lock, then extract the circlip and the operating lever assembly from the end of the lock cylinder, and withdraw the cylinder from the housing.

Refitting

- 4 Refitting is a reversal of removal, but check the operations of the lock on completion (see illustration).

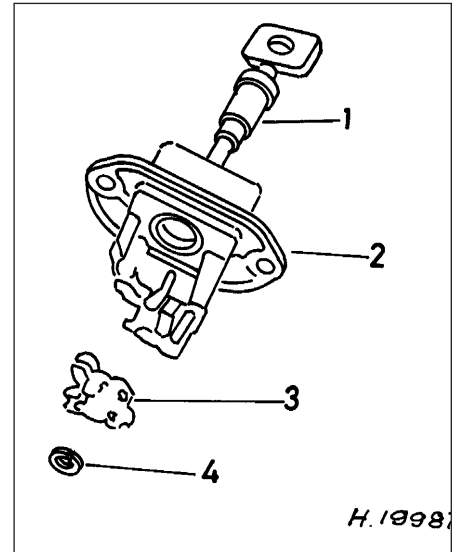
12 Tailgate (Hatchback models) - removal and refitting

Removal

- 1 Open the tailgate fully.
- 2 Disconnect the battery negative lead.
- 3 Remove the securing screws, and withdraw the tailgate trim panels.
- 4 Disconnect all the relevant wiring now exposed, and disconnect the washer fluid hose.



12.6B . . . for access to the tailgate hinge screws



11.4 Boot lid/tailgate lock cylinder components

- 1 Lock cylinder
- 2 Housing
- 3 Operating lever assembly
- 4 Circlip

5 If the original tailgate is to be refitted, tie string to the ends of all the relevant wires, and if necessary the washer fluid hose, then feed the wiring and the hose through the top edge of the tailgate. Untie the string, leaving it in position in the tailgate to assist refitting.

6 Prise off the rear roof trim panel, taking care not to break the securing clips, and lower the rear of the headlining slightly for access to the tailgate hinge securing screws (see illustrations). Mark the hinge positions on the body.

7 Have an assistant support the weight of the tailgate, then disconnect the tailgate struts from their mounting balljoints, with reference to Section 15.

8 Ensure that the tailgate is adequately supported, then remove the hinge securing screws and withdraw the tailgate from the vehicle. If the tailgate is to be refitted, rest it carefully on rags or cardboard, to avoid damaging the paint.

9 If desired, the hinges can be removed from the tailgate by driving out the hinge pins.

10 If the tailgate can be moved up and down on its hinges due to wear in the hinge pins or their holes, it may be possible to drill out the holes and fit slightly oversize pins. Consult a Vauxhall dealer for further advice.

11 If a new tailgate is to be fitted, transfer all serviceable components to it.

Refitting

12 Refitting is a reversal of removal, remembering the following points.

13 Align the hinges with the previously made marks on the body.



13.1 Tailgate lock (trim panel removed)

14 If the original tailgate is being refitted, draw the wiring and washer fluid hose (where applicable) through the tailgate, using the string.

15 If necessary, adjust the hinge bolts and the rubber buffers, to obtain a good fit when the tailgate is shut.

16 If necessary, adjust the position of the lock striker on the body, to achieve satisfactory lock operation.

13 Tailgate lock (Hatchback models) - removal and refitting



Proceed as described in Section 10, but note that for access to the lock, the rear tailgate trim panel must be removed, after unscrewing the securing screws. Note also that the lock is secured by three screws (see illustration).

14 Tailgate lock cylinder (Hatchback models) - removal and refitting



Proceed as described in Section 11, but note that for access to the lock cylinder, the rear tailgate trim panel must be removed after unscrewing the securing screws (see illustration).

15 Tailgate strut (Hatchback models) - removal and refitting



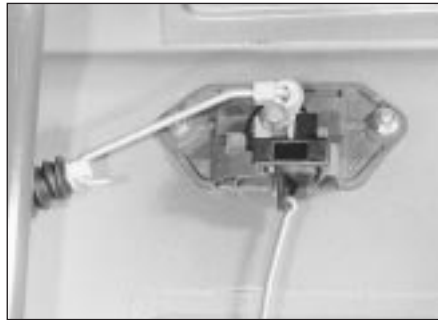
Removal

1 Open the tailgate fully, and have an assistant support it.

2 Release the strut from its mounting balljoints by prising the spring clips a little way out (see illustration), and pulling the strut off the balljoints. If the strut is to be re-used, do not remove the spring clips completely, and do not prise them out further than 6.0 mm (0.24 in).

Refitting

3 Refitting is a reversal of removal.



14.1 Tailgate lock cylinder housing - with central locking (trim panel removed)

16 Door - removal and refitting



Front door

Removal

1 The door hinges are welded onto the door-frame and the body pillar, so that there is no provision for adjustment or alignment.

2 To remove a door, open it fully and support it under its lower edge on blocks covered with pads of rag.

3 Where applicable, disconnect the battery negative lead, and disconnect the wiring connector from the front edge of the door. To release the connector, twist the locking collar, then pull the connector from the socket in the door (see illustration).

4 Using a punch, drive the large roll pin from the door check arm pivot.

5 Remove the plastic covers from the hinge pins, then drive out the pins using a punch. Have an assistant support the door as the pins are driven out, then withdraw the door from the vehicle.

Refitting

6 Refitting is a reversal of removal, using a new check link roll pin.

7 If the door can be moved up and down on its hinges due to wear in the hinge pins or their holes, it may be possible to drill out the holes and fit slightly oversize pins. Consult a Vauxhall dealer for further advice.



16.3 Disconnect the wiring connector from the front edge of the door



15.2 Prising the spring clip from a tailgate strut balljoint

8 Door closure may be adjusted by altering the position of the lock striker on the body pillar, using an Allen key or hexagon bit.

Rear door

9 The removal and refitting procedure for rear doors is as described for front doors. Note that on models with central locking or electric windows, it will be necessary to remove the door inner trim panel, as described in Section 17, disconnect the wiring harness and feed it through the front edge of the door.

17 Door inner trim panel - removal and refitting



Front door

Removal

1 Prise the trim plate from the door lock button in the top rear edge of the door, then pull the lock button from the lock operating rod.

2 On models with manually operated windows, release the securing clip and remove the window regulator handle. To release the securing clip, insert a length of wire with a hooked end between the handle and the trim bezel on the door trim panel, and manipulate it to free the securing clip from the handle (see illustration). Take care not to damage the door trim panel.

3 Prise the plastic surround from the door interior handle (see illustration).



17.2 Window regulator handle securing clip



17.3 Remove the plastic surround from the door interior handle

4 Remove the seven trim panel securing screws that are located along the bottom edge of the door, and around the bottom edge of the armrest/hand grip. Release the door pocket clip, which is located below and to the rear of the door pocket, out of view.

5 The remaining nine plastic clips securing the trim panel to the door must now be released. This can be done using a screwdriver, but it is preferable to use a forked tool, to minimise the possibility of damage to the trim panel and the clips. The clips are located around the outer edge of the trim panel.

6 Once the clips have been released, pull the trim panel away from the door, and push the large clip at the rear of the door pocket rearwards to allow the trim panel to be withdrawn.

7 When working on the driver's door of models with electric door mirrors, it will be necessary to disconnect the mirror switch wiring connectors as the trim panel is withdrawn. Disconnect the battery negative lead before disconnecting the connector, and note the position of the connector in the bracket at the top of the door (see illustration).

8 Similarly on models with door-mounted kerb lights, prise out the lamp and disconnect the wiring.

9 The plastic insulating sheet can be removed from the door after removing the loudspeaker (referring to Chapter 12 if necessary), and the door trim panel rear securing clip, which is attached to the door by a single screw. Take care not to damage the sheet.



17.7 Mirror switch wiring connector in bracket at top of door

10 The door pocket can be removed from the door trim panel by the three securing screws that are accessible from the rear of the trim panel, and releasing the single clip.

11 If desired, the door assist handle can be prised free from the door trim panel. Take care not to damage the securing clips.

Refitting

12 Refitting is a reversal of removal, remembering the following points.

13 If the plastic insulating sheet has been removed from the door make sure that it is refitted intact, and securely glued to the door. If the sheet is damaged or detached, rainwater may leak into the vehicle or damage the door trim.

14 Where applicable, ensure that the door mirror switch wiring connector is correctly positioned in its bracket before refitting the trim panel.

15 Ensure that all the trim panel securing clips engage as the panel is refitted, and if any of the clips were broken during removal, renew them on refitting.

Rear door

Removal

16 Proceed as described in paragraphs 1 to 3 inclusive.

17 On models with a door-mounted electric window operating switch, disconnect the battery negative lead, then carefully prise the switch from the door trim panel and disconnect the wiring plug.

18 Remove the three trim panel securing screws. Two are located under the interior handle surround, and the third is situated at the base of the door assist handle.

19 Proceed as described in paragraph 5.

20 Once the securing clips have been released, pull the trim panel away from the door (see illustration).

21 If desired, the plastic insulating sheet can be removed from the door by peeling it back from the door skin. Take care not to damage the sheet.

22 If desired, the door assist handle can be prised free from the door trim panel. Take care not to damage the securing clips.

Refitting

23 Refitting is a reversal of removal, remembering the following points.



17.20 Removing a rear door inner trim panel

24 If the plastic insulating sheet has been removed from the door, make sure that it is refitted intact, and securely glued to the door. If the sheet is damaged or detached, rainwater may leak into the vehicle or damage the door trim.

25 Where applicable, ensure that the electric window switch wiring is routed so that it does not foul the window regulator mechanism.

26 Ensure that all the trim panel securing clips engage as the panel is refitted, and if any of the clips were broken during removal, renew them on refitting.

18 Door interior handle - removal and refitting



Removal

1 Remove the door inner trim panel, as described in Section 17.

2 Slide the handle assembly rearwards to free it from the door, then unhook the operating rod, and withdraw the assembly.

Refitting

3 Refitting is a reversal of removal, but check the mechanism for satisfactory operation before refitting the door inner trim panel, then refit the trim panel with reference to Section 17.

19 Door exterior handle - removal and refitting



Front door

Removal

1 Remove the door inner trim panel, as described in Section 17.

2 Peel back the plastic insulating sheet sufficiently to gain access to the exterior handle.

3 Unscrew the two nuts securing the exterior handle to the door.

4 When working on the driver's door of models with central locking, unclip the microswitch from the rear edge of the exterior handle assembly.

5 Release the two lower retaining clips, then manipulate the exterior handle assembly through the outside of the door, and disconnect the operating rods.

Refitting

6 Refitting is a reversal of removal, but check the operation of the mechanism before refitting the door inner trim panel, and refit the trim panel with reference to Section 17.

Rear door

Removal

7 Fully lower the window, then continue as described in paragraphs 1 and 2.



20.2 Extract the circlip from the end of the lock cylinder . . .

8 Pull the weatherstrip from the rear edge of the window aperture, then unscrew the now exposed window rear guide rail securing screw. Note that the screw is of the Torx type.

9 Unscrew the remaining window rear guide rail securing screw (Torx type) which is accessible through the inner door skin, then withdraw the guide rail from the door. The weatherstrip can be left attached to the guide rail, in which case position the guide rail to one side out of the way, taking care not to damage the vehicle paintwork.

10 Reach in through the aperture in the rear of the door, and unclip the plastic shield from the door lock.

11 Unscrew the three Torx type lock securing bolts from the rear edge of the door, and lower the lock assembly inside the door.

12 Unscrew the two nuts securing the exterior handle to the door.

13 Release the two lower retaining clips, then manipulate the exterior handle through the outside of the door, and disconnect the operating rods.

Refitting

14 Refitting is a reversal of removal, but check the operation of the door lock, handle and window regulator mechanisms before refitting the door trim panel, and refit the trim panel with reference to Section 17.

20 Door lock barrel - removal and refitting



Removal

1 Remove the door exterior handle, as described in Section 19.

2 Insert the key into the lock, then extract the circlip from the end of the lock cylinder (see illustration).

3 Withdraw the lock cylinder using the key, and recover the lever assembly (see illustrations).

Refitting

4 Refitting is a reversal of removal, but check the operation of the door lock, handle and window regulator mechanisms before refitting the door trim panel, and refit the trim panel with reference to Section 17.



20.3A . . . then withdraw the lock cylinder using the key . . .



20.3B . . . and recover the lever assembly

21 Door lock - removal and refitting



Front door

Removal

1 Remove the door inner trim panel, as described in Section 17.

2 Unscrew the door trim panel rear securing clip, and peel the plastic insulating sheet back from the rear end of the door. Take care not to damage the sheet.

3 Working through the apertures in the door, disconnect the operating rods from the interior and exterior handles, and release the clips on the door, where applicable (see illustration).

4 Reach in through the lower door aperture and unclip the plastic shield from the lock.

5 On models with central locking, lower the window half way. Disconnect the battery negative lead and working through the lower aperture in the door, disconnect the wiring plug from the central locking motor. Note that a clip must be depressed to release the wiring plug.

6 Unscrew the three Torx bolts securing the lock assembly to the rear edge of the door. Then manipulate the lock assembly (complete with central locking motor, where applicable, and operating rods), around the window regulator mechanism and out through the lower door aperture (see illustration).



21.6 Removing the lock assembly - model with central locking



21.3 View of removed door lock and exterior handle assembly, showing operating rod attachments

Refitting

7 Refitting is a reversal of removal, but check the operation of the door lock, handle, and window regulator mechanisms before refitting the door trim panel, and refit the trim panel with reference to Section 17. If the lock operation is not satisfactory, note that the exterior handle operating rod can be adjusted by turning the knurled plastic adjuster wheel at the end of the rod (see illustration).

Rear door

Removal

8 Fully lower the window, then remove the door inner trim panel and the plastic insulating sheet, as described in Section 17.

9 Working through the apertures in the door, disconnect the operating rods from the interior and exterior handles, and from the lock button bellcrank.



21.7 Exterior handle operating rod adjuster wheel (arrowed) at lock end of rod



21.12 Unclip the plastic shield from the lock

10 Pull the weatherstrips from the rear edge of the window aperture, then unscrew the now-exposed window rear guide rail securing screw. Note that the screw is of the Torx type.
 11 Unscrew the remaining window rear guide rail securing screw (Torx type), which is accessible through the inner door skin, then withdraw the guide rail from the door. The weatherstrip can be left attached to the guide rail, in which case position the guide rail to one side out of the way, taking care not to damage the vehicle paintwork.

12 Reach in through the aperture in the rear of the door, and unclip the plastic shield from the lock (see illustration).

13 On models with central locking, disconnect the battery negative lead (if not already done) and disconnect the wiring plug from the central locking motor. Note that a clip must be depressed to release the wiring plug.

14 Unscrew the three Torx bolts securing the lock assembly to the rear edge of the door. Then manipulate the lock assembly (complete with central locking motor, where applicable, and operating rods), around the window regulator mechanism and out through the lower door aperture.

Refitting

15 Proceed as described in paragraph 7.

22 Door check arm - removal and refitting

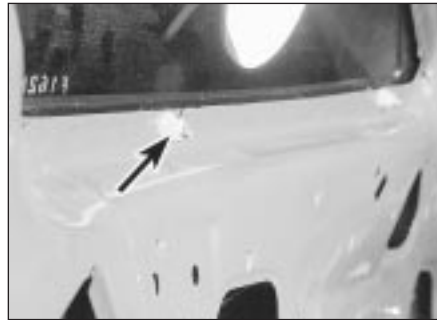


Removal

1 Open the door fully, then using a punch, drive the roll pin from the door check arm pivot.
 2 Remove the door inner trim panel, as described in Section 17.
 3 Working at the front edge of the door, unscrew the two bolts securing the check arm to the door, then withdraw the check arm through the inside of the door.

Refitting

4 Refitting is a reversal of removal, but use a new roll pin to secure the check arm to the pivot.



24.2 Upper rear quarter trim panel removed, exposing rear quarter window securing nut (arrowed)

23 Windscreen and rear window - removal and refitting



1 Except for the rear quarter windows, all fixed glass is bonded in position, using a special adhesive.

2 Special tools, adhesives and expertise are required for successful removal and refitting of glass fixed by this method. Such work must therefore be entrusted to a Vauxhall dealer or a windscreen specialist.

3 The same remarks apply if sealing of the windscreen or other glass surround is necessary.

24 Rear quarter windows - removal and refitting



Removal

1 Remove the upper rear quarter trim panel, as described in Section 36.

2 Have an assistant support the quarter window from outside the vehicle, then unscrew the plastic securing nuts, and push the window from the body (see illustration).

Refitting

3 Refitting is a reversal of removal, but ensure that the seal on the rear of the glass is seated correctly against the body as the window is fitted.



25.4 Window upper guide rail plastic end stop (arrowed)

25 Door window - removal and refitting



Front door

Removal

1 Fully lower the window, then remove the door inner trim panel and the plastic insulating sheet, as described in Section 17.

2 Unscrew the window rear guide rail securing bolt from the rear edge of the door, then manipulate the guide rail out through the lower aperture in the door.

3 Pull the weatherstrips from the inside and outside lower edge of the window aperture.

4 Pull the plastic end stop from the window upper guide rail (see illustration).

5 Remove the two screws securing the lower guide rail to the door, and lower the guide rail (see illustration).

6 Manipulate the window regulator mechanism as necessary, and tilt the window glass forwards until it can be withdrawn from outside the door through the window aperture.

Refitting

7 Refitting is a reversal of removal, but adjust the angle of the lower guide rail by means of the two securing screws until smooth operation of the window is achieved. Refit the door inner trim panel with reference to Section 17.

8 On models with electric windows, on completion, the electronic control system must be programmed as follows.

9 Close all the doors, and switch on the ignition.

10 Close each window in turn, using the relevant switch, and when each window has fully closed, continue to keep the switch depressed for at least five seconds.

Rear door

Removal

11 Fully lower the window, then remove the door inner trim panel and the plastic insulating sheet, as described in Section 17.



25.5 Window lower guide rail securing screws (arrowed)



25.12 Unscrewing the window rear guide rail securing screw

12 Pull the weatherstrip from the rear edge of the window aperture, then unscrew the now exposed window rear guide rail securing screw (see illustration). Note that the screw is of the Torx type.

13 Unscrew the remaining window rear guide rail securing screw (Torx type), which is accessible through the inner door skin, then withdraw the guide rail from the door (see illustrations). The weatherstrip can be left attached to the guide rail, in which case position the guide rail to one side out of the way, taking care not to damage the vehicle paintwork.

14 Pull the weatherstrips from the inside and outside lower edge of the window aperture (see illustration).

15 Manipulate the window regulator mechanism as necessary, and tilt the window glass forwards until it can be withdrawn from outside the door through the window aperture (see illustration).

Refitting

16 Refitting is a reversal of removal, but refit the door inner trim panel with reference to Section 17.

17 On models with electric windows, on completion of the electronic control system must be programmed, as described in paragraphs 9 and 10.

26 Door window regulator - removal and refitting



Front door

Removal

1 Lower the window halfway, then remove the door inner trim panel and the plastic insulating sheet, as described in Section 17.

2 Support the window in the half-open position by placing a wooden prop under it, ensuring that the prop is clear of the regulator mechanism.

3 Drill out the rivets securing the regulator mechanism to the door, using an 8.5 mm (0.34 in) diameter drill. Take care not to damage the door panel.

4 Pull the plastic end stop from the window upper guide rail.



25.13A Remove the remaining securing screw . . .



25.13B . . . then withdraw the guide rail from the door



25.14 Pulling the inside weatherstrip from the window aperture



25.15 Withdrawing the window glass from the door

5 Remove the two screws securing the lower guide rail to the door, and lower the guide rail.

6 On models with electric windows, disconnect the battery negative lead (if not already done), then disconnect the wiring plug from the central locking motor.

7 Carefully manipulate the window regulator assembly out through the lower aperture in the door.

Refitting

8 Refitting is a reversal of removal, remembering the following points.

9 Ensure that the regulator arms are correctly positioned in the guide rails before securing the regulator assembly to the door (see illustration).

10 Secure the regulator assembly to the door, using new rivets.

11 Adjust the angle of the lower guide rail by means of the two securing screws, until smooth operation of the window is achieved.

12 Refit the door inner trim panel with reference to Section 17.

13 On models with electric windows, on completion, the electronic control system must be programmed, as described in Section 25, paragraphs 9 and 10.

Rear door

Removal

14 Proceed as described in paragraphs 1 to 3 inclusive, and paragraphs 6 and 7.

Refitting

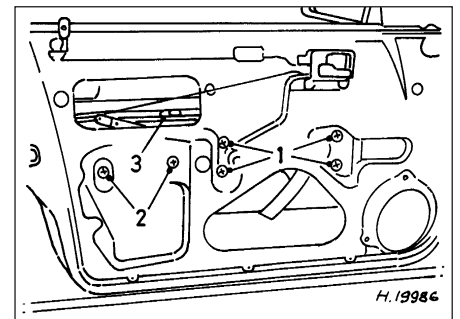
15 Refitting is a reversal of removal, remembering the following points.

16 Ensure that the regulator arm is correctly positioned in the guide rail before securing the regulator assembly to the door.

17 Secure the regulator assembly to the door, using new rivets.

18 Check the regulator mechanism for satisfactory operation before refitting the door trim panel, then refit the panel with reference to Section 17.

19 On models with electric windows, on completion, the electronic control system must be programmed, as described in Section 25, paragraphs 9 and 10.



26.9 Front door window regulator and guide components

- 1 Regulator mechanism securing rivets
- 2 Lower guide rail securing screws
- 3 Upper guide rail and stop



27.2 Removing the mirror glass - electric mirror (mirror removed)



27.6 Removing the mirror trim panel . . .



27.7A . . . for access to the mirror securing screws



27.7B Withdraw the mirror and disconnect the wiring plug



27.8 Locating the weather seal on the mirror housing

27 Door mirror - removal, overhaul and refitting

Glass renewal

- 1 If desired, the mirror glass can be removed for renewal without removing the mirror. On models with electric mirrors, disconnect the battery negative lead.
- 2 Carefully prise the glass from its balljoints using a screwdriver, and where applicable, disconnect the heater wires from the glass. Take care, as the glass is easily broken if forced (see illustration).
- 3 To refit, simply push the glass onto the balljoints, ensuring that the heater wires are connected (where applicable).



27.10 Mirror motor securing screws (arrowed)

Mirror - removal and refitting

- 4 On models with electric mirrors, disconnect the battery negative lead.
- 5 On models with manually adjustable mirrors, pull off the interior adjuster lever.
- 6 Prise the mirror trim panel from the inside front edge of the door (see illustration).
- 7 Extract the three now-exposed securing screws, and withdraw the mirror assembly from the door. On models with electric mirrors, disconnect the wiring plug (see illustrations).
- 8 Refitting is a reversal of removal, but ensure that the rubber weather seal is correctly located on the mirror housing (see illustration).

Electric motor removal and refitting

Removal

- 9 Remove the mirror glass, as described previously in this Section.
- 10 Extract the three motor securing screws, and disconnect the wiring plug, then withdraw the motor (see illustration).

Refitting

- 11 Refitting is a reversal of removal, but ensure that the wiring is routed behind the motor, to avoid interfering with the adjustment mechanism.

28 Bumpers - removal and refitting

Front bumper

Removal

- 1 Remove both headlamps, as described in Chapter 12.
- 2 The bumper is removed as a complete assembly with the front trim panel, therefore on models with front foglamps, disconnect the foglamp wiring plugs. On DOHC and 1993-on models remove the radiator grille panel, as described in Section 29. Also remove the water deflector if fitted.
- 3 The bumper is secured by a single bolt at each end, and by clips. It is possible to unscrew the right-hand securing bolt with the air cleaner assembly in place. Using an open-ended spanner, but if desired the air cleaner assembly can be removed for improved access, as described in Chapters 4A or 4B, as applicable.
- 4 Remove the left and right-hand bumper securing bolts from the body side panels behind the headlamp apertures (see illustration).
- 5 Release the bumper retaining clips from the body by pushing each end of the bumper towards the front of the vehicle, then pulling the end of the bumper out from the wing (see illustration).



28.4 Unscrewing the right-hand front bumper securing bolt (air cleaner removed)



28.5 Front bumper retaining clips released from body

6 Carefully withdraw the bumper from the vehicle.

Refitting

7 Refitting is a reversal of removal.

Rear bumper

Removal

8 Remove the rear trim panel from the luggage compartment by prising up the top edge to release the clips, then lift the panel upwards to free it from the lower locating tags. The bumper retaining nuts are now exposed (see illustrations).

9 Note that the bumper is removed as a complete assembly with its lower trim panel.

10 Disconnect the battery negative lead, then prise the number plate lamp from the bumper, and disconnect the wiring.

11 Unscrew the bumper retaining nuts, and recover the washers. On DOHC models, the bumper securing nuts are accessible from underneath the vehicle.

12 Where fitted, remove the special locking rivets, one each side, securing the bumper to the wheel arch.

13 Additional clips may be present on the underside of the bumper which must also be removed.

14 Release the bumper retaining clips at the front edges of the bumper by tapping the centre pin through the expanding clip, using a pin punch or similar. The pin will drop out as it is pushed through - recover it for refitting.

15 Push each end of the bumper towards the rear of the vehicle, then pull the end of the bumper from the rear wing.



29.1 Freeing a radiator grille panel retaining clip using a screwdriver



28.8A Remove the trim panel . . .

16 Carefully withdraw the bumper from the vehicle, taking care not to strain the number plate lamp wiring.

Refitting

17 Refitting is a reversal of removal. The expanding clips at the front edges of the bumper are secured by pushing the pin into the clip until flush.

29 Radiator grille panel - removal and refitting



All SOHC models

Removal

1 With the bonnet fully open and supported, pull the upper edge of the grille panel forwards and free the retaining clips using a screwdriver. Then lift the panel to release the lower locating lugs from their grommets in the lower body front panel (see illustration).

Refitting

2 Refitting is a reversal of removal, but ensure that the lower locating lugs seat correctly in their grommets, and take care not to push the grommets from their holes in the body front panel.

DOHC and 1993-on models

Removal

3 Extract the three screws securing the grille panel to the body front panel, then lift the grille panel to release the lower locating lugs from their grommets in the lower body front panel.

Refitting

4 Refitting is a reversal of removal, with reference to paragraph 2.

30 Windscreen cowl panel - removal and refitting



Removal

1 Remove the wiper arms, referring to Chapter 12, if necessary.



28.8B . . . to expose the bumper securing nuts

2 Disconnect the washer fluid hose from the reservoir, and feed it through the cowl panel, noting its routing as a guide to refitting. Be prepared for fluid spillage.

3 Where applicable, disconnect the battery negative lead, then disconnect the underbonnet lamp wiring plug and feed it through the cowl panel, noting its routing as a guide to refitting.

4 Working from one end of the cowl panel, carefully prise the panel from the body. Care must be taken, as the panel is easily damaged.

Refitting

5 Refitting is a reversal of removal, ensuring that the panel is correctly seated along its length, and that the washer fluid hose, and where applicable the underbonnet lamp wiring, is correctly routed.

31 Wheel arch liners - general



1 The plastic wheel arch liners are secured by a combination of self-tapping screws and plastic clips. Removal and refitting is self explanatory, remembering the following points (see illustration).

2 Some of the securing clips may be held in place using a central pin, which must be tapped out to release the clip.

3 The clips are easily broken during removal, and it is advisable to obtain a few spare clips for possible use when refitting.



31.1 Removing a wheel arch liner



34.2A Extract the four securing screws . . .



34.2B . . . and withdraw the guide rail plastic surround



34.4 Prising a plastic trim strip from the guide rail

4 Certain models may have additional underbody shields and splashguards fitted, which may be attached to the wheel arch liners.

2 Remove the securing screws, and withdraw the flap.

Refitting

3 Refitting is a reversal of removal.



34.5 Loosening a glass panel securing screw

32 Engine undershield (DOHC models) - removal and refitting



Removal

1 Apply the handbrake, then jack up the front of the vehicle, and support on axle stands (see "Jacking and Vehicle Support").

2 Extract the two securing screws, and remove the oil filter access panel.

3 Working around the edges of the splash shield, remove the self tapping screws that secure the shield to the body, noting that some of the screws also secure the wheel arch liners.

4 With the help of an assistant, pull the shield from the vehicle, and place it to one side to avoid damage.

Refitting

5 Refitting is a reversal of removal.

33 Fuel filler flap - removal and refitting



Removal

1 Open the flap for access to the four screws securing the flap to the rear wing.



34.6 Lifting the glass panel from the roof aperture

34 Sunroof components - removal and refitting



Note: The sunroof is a complex piece of equipment consisting of a large number of components. It is strongly recommended that the sunroof mechanism is not disturbed unless necessary. If the sunroof mechanism is faulty, or requires overhaul, consult a dealer for advice.

Glass panel

Removal

1 Push the sunshade fully rearwards, and open the glass panel halfway.

2 Extract the four securing screws from the front edge of the guide rail plastic surround, and withdraw the surround down through the sunroof aperture (see illustrations).

3 Move the glass panel forward, and open it to its tilt position.

4 Prise the plastic trim strips from the guide rails, to expose the glass panel securing screws (see illustration).

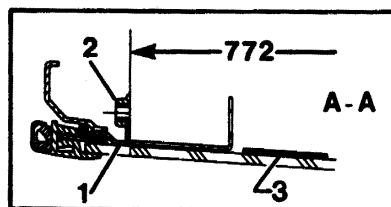
5 Extract the three securing screws from each guide rail, and where applicable, recover the lockwashers (see illustration).

6 Carefully lift the glass panel from the roof aperture, taking care not to damage the vehicle paintwork (see illustration).

Refitting

7 Refitting is a reversal of removal, remembering the following points.

8 Before refitting the glass panel, measure the distance between the mounting flanges. Bend the flanges if necessary to achieve the desired dimension (see illustration).



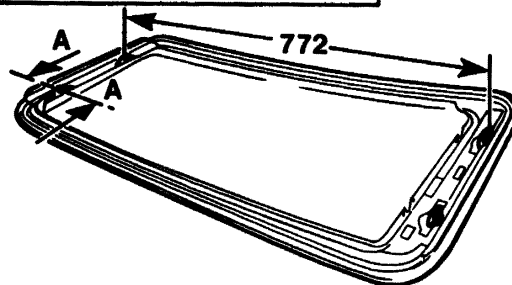
34.8 Sunroof glass panel mounting flange dimension

1 Mounting flange

2 Nut

3 Protective foil

A-A Cross-section cutting point
(Dimensions in mm)



11•14 Bodywork and fittings

9 Where applicable, ensure that the glass panel securing screw lockwashers engage with the locating pins on the guide rails.

10 Before fully tightening the glass panel securing screws, close the panel, and adjust its position to give the dimensions shown (see illustration).

11 If a new glass panel has been fitted, peel off the protective foil on completion of adjustment.

12 Take care when refitting the guide rail plastic surround, as it is fragile. Adjust the open position of the glass panel as required to fit the surround without damaging it.

Gutter

Removal

13 Remove the glass panel, as described previously in this Section.

14 Extract the two securing screws (Allen or Torx type), then lift the gutter from the roof aperture.

Refitting

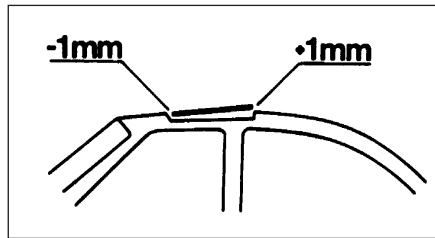
15 Refit the gutter to the roof aperture at an angle, pushing it up to the stop on both sides until the retaining lugs engage with the gutter guides.

16 Refit and tighten the securing screws, then refit and adjust the glass panel as described earlier in this Section.

Sunshade

Removal

17 Remove the glass panel and the gutter, as described previously in this Section.



34.10 Sunroof glass panel fitting position

18 Carefully prise the four sunshade spring clips out of the roof guides using a plastic or wooden implement to avoid damage, then withdraw the sunshade from the guides (see illustration).

Refitting

19 Refitting is a reversal of removal, but ensure that the spring clips engage correctly with the roof guides.

Crank drive

Removal

20 Prise out the trim and unscrew the crank handle securing screw. Prise the crank from the drive spindle.

21 Disconnect the battery negative lead, then prise the courtesy lamp from the roof trim panel, and disconnect the wiring.

22 Remove the two trim panel securing screws, and withdraw the trim panel from the roof (see illustrations).

23 Extract the two securing screws, and remove the crank drive assembly (see illustration).

Refitting

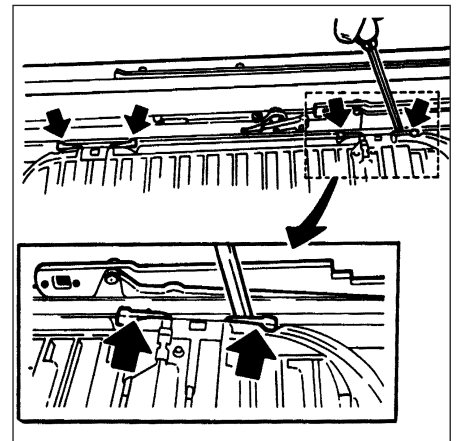
24 Refitting is a reversal of removal, remembering the following points.

25 Before finally refitting the crank handle, the crank drive must be adjusted as follows.

26 Temporarily refit the crank handle, and position it so that it faces forwards, then depress the locking button.

27 Remove the crank handle and turn the crank drive pinion anti-clockwise by hand as far as the stop.

28 Refit the crank handle so that it faces directly forwards, then tighten the securing screw and refit the trim.



34.18 Sunshade spring clip locations (arrowed)

35 Interior trim panels - general



1 The various interior trim panels are secured by a variety of screws and plastic clips.

2 Where press-fit plastic fasteners are used, it is advisable to use a forked tool similar to that shown to remove them, to avoid damage to the clips and the trim panel (see illustration).

3 Removal and refitting of most of the trim panels is self-explanatory but in all cases, care must be taken, as the panels are easily damaged by careless handling and the use of sharp instruments to release clips.

36 Interior trim panels - removal and refitting



Sill trim panel

Removal

1 When working on the passenger side of models fitted with ABS, extract the three securing screws and remove the cover from the ABS control module. Note that two of the screws are covered by plastic caps, which must be prised out to expose the screws.



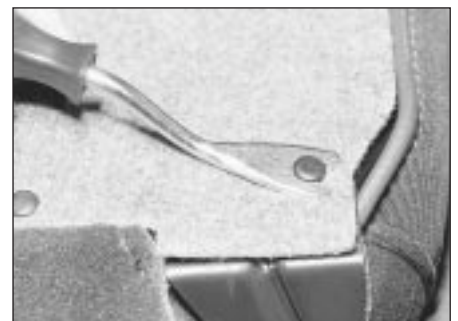
34.22A Extract the securing screws . . .



34.22B . . . then withdraw the trim panel from the roof . . .



34.23 . . . to expose the crank drive - securing screws arrowed



35.2 Forked tool being used to remove clip from rear seat back trim



36.2 Sill trim panel removed to expose securing clips

2 The sill trim panel can be removed by simply prising it upwards to release the securing clips from the floor (see illustration).

Refitting

3 Refitting is a reversal of removal, but ensure that the panel is correctly seated with its top edge located under the sill weatherstrip.

Footwell side trim panel

Removal

4 Release the front end of the sill trim panel from the floor, as described previously.

5 Prise the footwell side trim panel from the footwell (see illustration). If necessary, pull the weatherstrip from the edge of the door aperture.

Refitting

6 Refitting is a reversal of removal, but ensure that the trim panels are correctly seated under the weatherstrip.



36.11 . . . then pull the lower trim panel from the pillar



36.17 Withdrawing the upper rear quarter trim panel - Hatchback model



36.5 Removing the driver's footwell side trim panel

Front body pillar trim panel

Removal

7 Prise the trim panel from the body pillar to release the six retaining clips. If necessary, pull the weatherstrip from the edge of the pillar.

Refitting

8 Refitting is a reversal of removal, but ensure that the trim panel is correctly seated under the weatherstrip.

Centre body pillar trim panels

Removal

9 Remove the sill trim panel, as described previously in this Section.

10 Prise the weatherstrips from the sides of the body pillar (see illustration).

11 Pull the lower trim panel from the pillar to release the retaining clips (see illustration).

12 With the lower trim panel removed, the upper trim panel can be withdrawn in the same way after unbolting the upper seat belt mounting. Prise off the trim to expose the upper seat belt mounting bolt, then unscrew the bolt and recover the spacer.

Refitting

13 Refitting is a reversal of removal, but ensure that the trim panels are seated correctly under the weatherstrips.

Rear quarter trim panels

14 Prise off the trim and unbolt the seat belt upper mounting from the body pillar. Recover the spacer.

15 Pull back the weatherstrip from the rear edge of the rear door aperture. On Hatchback models, remove the parcel shelf.



36.19A Removing the rubber stop from the seat catch



36.10 Pull the weatherstrip from the sides of the body pillar . . .

16 Remove the screws securing the upper rear quarter trim panel to the body. Note that all the screws are of the Torx type. When working on the right-hand side of Hatchback models, it will be necessary to open the first-aid kit/warning triangle cover flap in the luggage compartment for access to some of the screws.

17 Withdraw the upper seat quarter trim panel carefully, taking care not to damage surrounding panels (see illustration). Where applicable, disconnect the wiring from the loudspeaker.

18 With the upper rear quarter trim panel removed, the lower trim panel can be removed.

19 The lower rear quarter trim panel is secured by a variety of screws, nuts and clips, depending upon model. Removal and refitting of the panel is self-explanatory, remembering the points made in Section 35. Note that the rubber stop must be removed from the seat catch before the trim panel can be withdrawn (see illustrations).

Luggage compartment rear trim panel

20 Prise the trim panel from the rear of the luggage compartment to release the securing clips.

21 Refitting is a reversal of removal.

Tailgate trim panels (Hatchback models)

22 The tailgate trim panels are secured by screws, and removal and refitting are self-explanatory. Note that the lower side panel securing screws also secure the rear panel.



36.19B Withdrawing the lower rear quarter trim panel - Hatchback model