

Fig. 2: Identifying Airbag Component Location Overview (2 Of 2)

Courtesy of VOLKSWAGEN GROUP OF AMERICA, INC.

1. **10 - Front passenger side curtain airbag**
 - Removing, refer to **DRIVER AND PASSENGER SIDE CURTAIN AIRBAGS**
2. **11 - Driver side side curtain airbag**
 - Removing, refer to **DRIVER AND PASSENGER SIDE CURTAIN AIRBAGS**

AIRBAG, BELT TENSIONER AND BATTERY CUT-OUT UNITS, GENERAL SAFETY PRECAUTIONS

- WARNING:**
- **Pyrotechnic components always contain chemicals, which turn into an expanding gas when detonated. There is also additional stored**

- gas available for discharge.
- This gas is contained under high pressure and is stored in a pressurized gas container.
 - An electric/mechanical igniter ignites the pyrotechnic components.
 - Testing, removing, installing and repair work may only be performed by qualified personnel.
 - There is no change interval for airbag units.
 - Never test with a test light, volt meter or ohm meter.
 - The pyrotechnic components may be checked only when they are installed and with a Volkswagen approved vehicle diagnosis, testing and information system.
 - When working on pyrotechnic components and on the Airbag control module, the battery ground cable must be disconnected when the ignition is switched on. Then cover the negative pole.
 - Wait for 10 seconds after disconnecting the battery.
 - Connect the battery with the ignition SWITCHED ON. No one should be sitting inside the vehicle when doing this. Exception: vehicles with the battery inside the passenger compartment. In this case, stay away from the airbags and the safety belts.
 - Wash hands after touching ignited restraint system pyrotechnic components.
 - Pyrotechnic components may not be opened nor repaired; always use new parts (risk of injury).
 - Pyrotechnic components that have fallen onto a hard surface or show signs of damage must not be installed in vehicle.
 - Before handling pyrotechnic components of the restraint system, for example, before disconnecting the electrical harness connector, the relevant person must discharge static electricity. Touching grounded metal parts, for example, touching the door striker, will discharge the static electricity.
 - Pyrotechnic components should be installed immediately upon removal from shipping package.
 - If the work must be stopped for awhile, put the pyrotechnic component back into its shipping package.
 - Do not leave the pyrotechnic component out unattended.
 - Do not use any grease or cleaning solutions on pyrotechnic components.
 - Pyrotechnic components must not be exposed to temperatures over 100 °C, even for a short time.

WARNING:

- **Storage must conform to national legislation.**
- **Transport must conform to national and international guidelines, whereby packaging, identification and shipping documents are controlled to the greatest detail.**
- **Undeployed pyrotechnic components must be disposed of in an orderly manner, conforming to national legislation, in their original packaging! Direct questions to your importer!**
- **Only pyrotechnic components, which have been ignited completely, may be disposed in industrial waste.**

AIRBAG UNITS, REMOVING AND INSTALLING AFTER AN ACCIDENT

After an accident with airbag deployment, the following components must always be replaced:

- All deployed airbag units.
- Supports and bracket of the front passenger airbag unit in the case of a deployed front passenger airbag.
- Coil connector with slip ring, if driver airbag is deployed.
- All seat belts with deployed seat belt tensioners.
- If needed (visual inspection), the following must also be replaced: all faulty components.

Accident without airbag deployment

- If the airbag malfunction indicator lamp (K 75) does not indicate a malfunction, the airbag components do not need to be replaced. Check seat belts separately.

COMPONENTS, ADAPTING

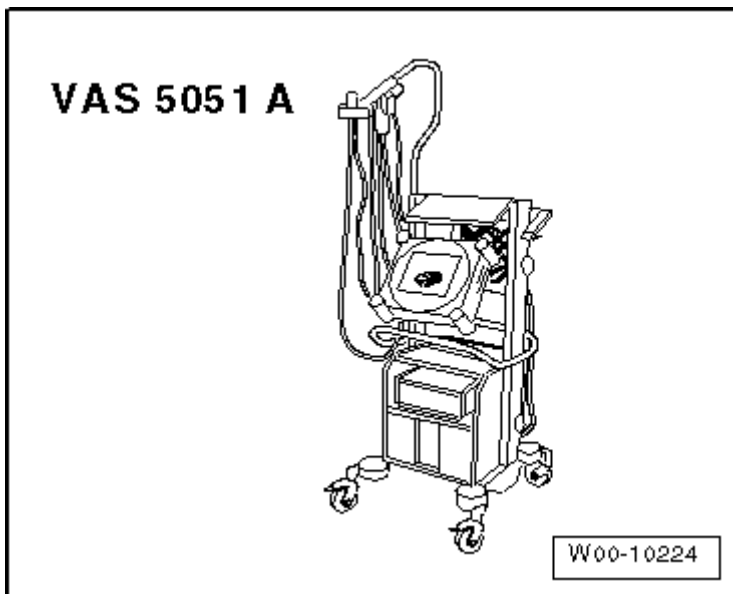


Fig. 3: Identifying Diagnostic Operation System VAS5051A

Courtesy of VOLKSWAGEN GROUP OF AMERICA, INC.

- Vehicle Diagnosis, Testing and Information System VAS 5051
- Diagnostic cable VAS 5051/1 or VAS 5051/3

Select "Guided Fault Finding" in the Vehicle Diagnosis, Testing and Information System VAS 5051.

After all control modules have been interrogated:

- Press the "Go to" button.
- Select "function/component selection".
- Select "Body".
- "Body Repairs".
- Select "01 - On board diagnostic-capable systems".
- Select "Airbag".
- Select "Functions".
- Select "Action".

DRIVER AND PASSENGER AIRBAG, SPECIAL NOTES

- WARNING:**
- **Store driver and passenger airbag units in their uninstalled condition so that the cushioned side faces upward.**

SIDE AIRBAG MODULE, SPECIAL NOTES

- WARNING:**
- **Place any removed head curtain airbag modules back in their transport containers or on a clean and even surface with a cloth underneath.**
 - **They may be folded as long as this does not damage them, especially the protective sleeve.**
 - **Handle head curtain airbag modules with great care when removing and installing them to prevent causing any damage.**
 - **As long as the gas generator is NOT attached, hold it securely when transporting, removing, installing, etc.**

LATCH CHILD SEAT ANCHORS, INSPECTING AFTER AN ACCIDENT

Inspection Points

- Child seat anchors must be checked for damage or deformations after an accident.
- Child seat anchors that are welded into the body cannot be repaired or corrected.
- Child seat anchors that are bolted to the body must be replaced if damaged or deformed.

PASSIVE OCCUPANT DETECTION SYSTEM**AFTER AN ACCIDENT WITH BELT TENSIONER AND/OR AIRBAG DEPLOYMENT**

- Each time passenger airbag and/or belt pretensioner on passenger side is deployed, Seat Occupied Recognition Control Module -J706- basic setting must be performed. Perform the basic setting with a Vehicle Diagnosis Tester that has "Guided Fault Finding".
- If the seat rails and/or seat pan must be replaced after an accident due to deformation, seat occupied recognition must also be replaced with "seat occupied recognition repair kit". Then, Seat Occupied Recognition Control Module -J706- basic setting must be performed. Perform the basic setting with a Vehicle Diagnosis Tester that has "Guided Fault Finding".

PASSIVE OCCUPANT DETECTION SYSTEM, SAFETY PRECAUTIONS

- After every repair on the passenger seat in which the seat and/or backrest cover was "disengaged" basic setting on Seat Occupied Recognition Control Module -J706- must be performed. Perform the basic setting with a Vehicle Diagnosis Tester that has "Guided Fault Finding".
- Do not bend the passenger occupant detection system mat.
- A leaking mat must be replaced (repair kit).
- Do not bend the passenger occupant detection system pressure hose.
- Seat occupied recognition (repair kit) components must not fall on hard surfaces.
- Seat occupied recognition components must not come in contact with grease.
- There is the danger that the seat occupied recognition components may be damaged by sharp objects when working on the seat. It is necessary to avoid this danger.
- The mat, the fleece and various covers must be fitted to be free of folds.
- When installing, ensure upholstery and cover are installed correctly.
- Replace all upholstery clips and clip connectors from cover, ensure it is positioned correctly on seat when doing so.
- System basic setting is only possible at temperatures between 0 ° Celsius und + 40 Celsius.
- Make sure that no objects are placed on seat when performing basic setting.
- Using a seat cover or placing a cushion on the seat will impair the passenger occupant detection system as well as the effectiveness of the airbag system.
- Do not install any clips near the mat for the passenger occupant detection system. This also applies to changes to the seat wiring harness.

PASSIVE OCCUPANT DETECTION SYSTEM ASSEMBLY OVERVIEW

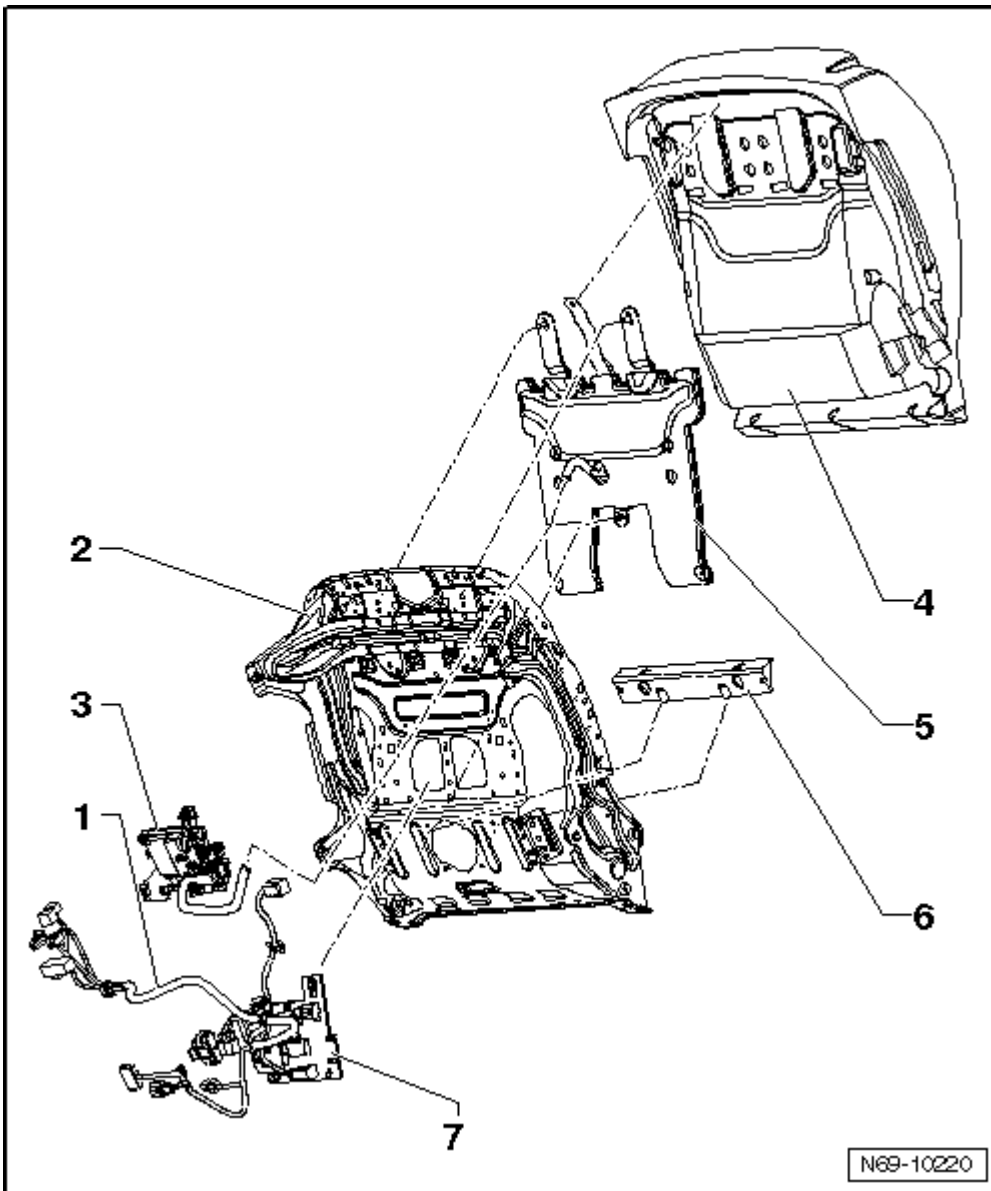


Fig. 4: Identifying Assembly Overview: Passenger Occupant Detection System (PODS), (USA Only)
Courtesy of VOLKSWAGEN GROUP OF AMERICA, INC.

1. **Front seat wiring harness**
 - No long necessary to removed due to technical update.
2. **Seat frame**
3. **Seat Occupied Recognition Control Module -J706-**
4. **Seat cushion**
 - Must not be separated from mat for seat occupied recognition
5. **Passive Occupant Detection System Mat**
 - Must not be removed from pressure hose and upholstery of front seat cushion
6. **Insertion profile**

2014 Volkswagen Golf

Accessories & Equipment Passenger Protection, Airbags, Seat Belts

- Note location

7. Bracket

- White
- No longer necessary to be removed due to technical update.

PASSIVE OCCUPANT DETECTION SYSTEM REPAIR KIT COMPONENTS

If a system component malfunctions, it must be replaced with components from the repair kit. Repair set is already matched to characteristics of vehicle to be repaired and contains the following components:

- Seat cushion with the passenger occupant detection system mat and pressure hose
- Passenger occupant detection system pressure sensor -G452-
- Passenger occupant detection system control module -J706-

WARNING: Never use repair set components separately.

Be sure to only use components that are calibrated to each other. This contains the mat for the passenger occupant detection system, the passenger occupant detection system control module -J706- and the seat cushion.

WARNING: Read and follow instructions for use on package of repair set. Misapplication may lead to malfunction of system.

SEAT BELTS

FRONT SEAT BELTS, 2-DOOR, ASSEMBLY OVERVIEW

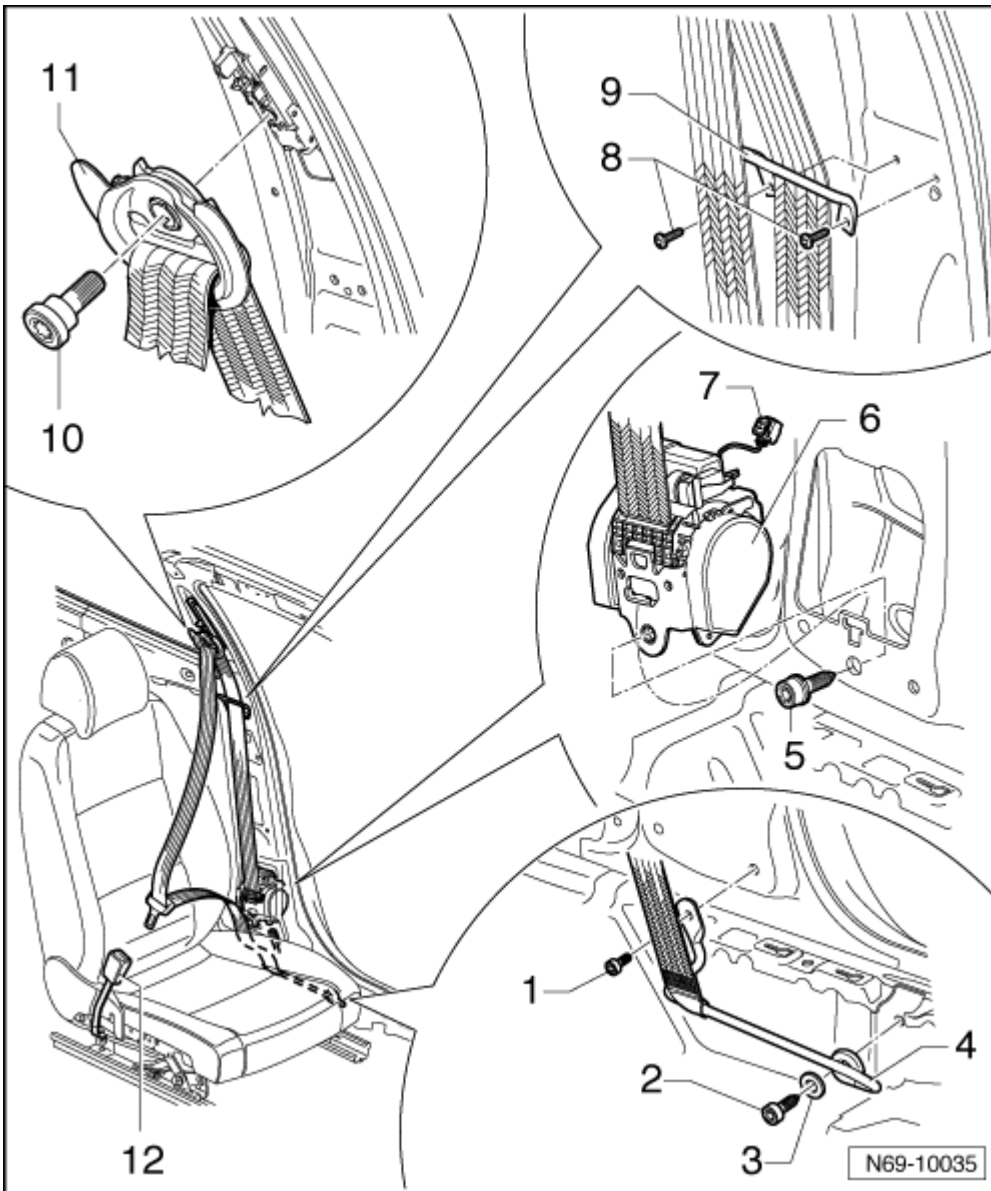


Fig. 5: Identifying Front Seat Belts Removal/Installation Components (2-Door)
 Courtesy of VOLKSWAGEN GROUP OF AMERICA, INC.

1. **Bolt**
 - 20 Nm
2. **Bolt**
 - 40 Nm
3. **Window**
4. **Anchor rail**
5. **Bolt**
 - 40 Nm
6. **B-pillar automatic belt retractor**