

BRAKES**Wheel Brake - Removal, Replacement And Installation****FRONT WHEEL BRAKE****BRAKE PADS, FRONT****Materials****Designation****Part Number**

Silicone grease

1161688

REMOVAL

NOTE: Removal steps in this procedure may contain installation details.

See **SAFETY INFORMATION BRAKE SYSTEM**

Remove the wheel. See **WHEELS**

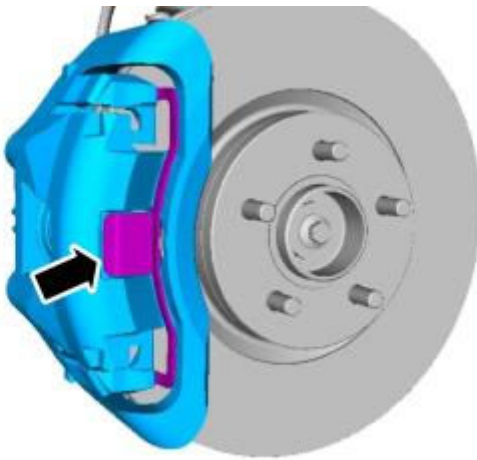


Fig. 1: Locating Anti-Rattle Spring
Courtesy of VOLVO CARS CORPORATION

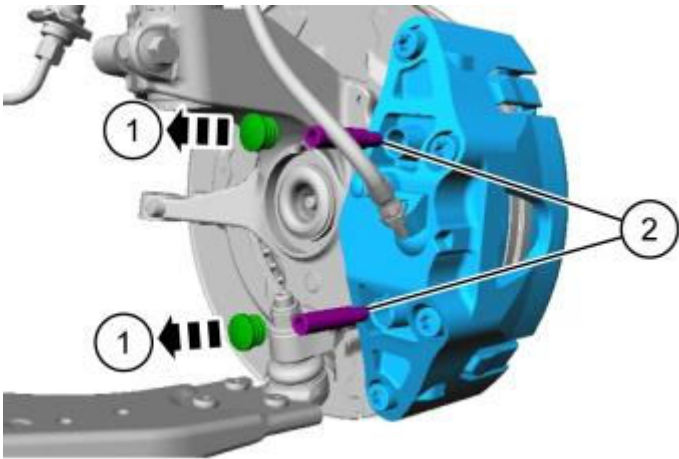


Fig. 2: Locating Caliper Slide Pins

Courtesy of VOLVO CARS CORPORATION

WARNING: The brake caliper housing Torx bolts must not be removed.

WARNING: Make sure that no load is placed on the brake hose.

Torque: Slide rail front brake caliper

28 Nm

Torque: Slide rail front brake caliper

60 Nm

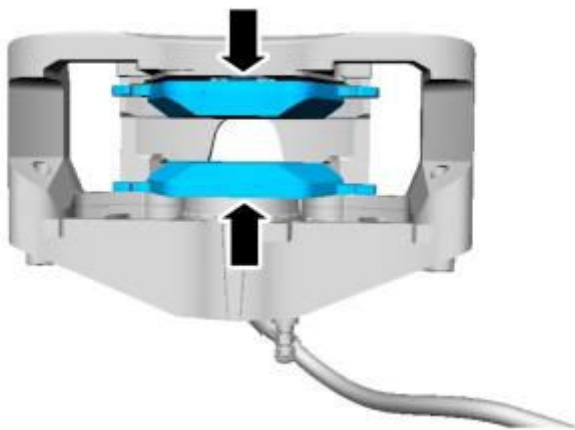
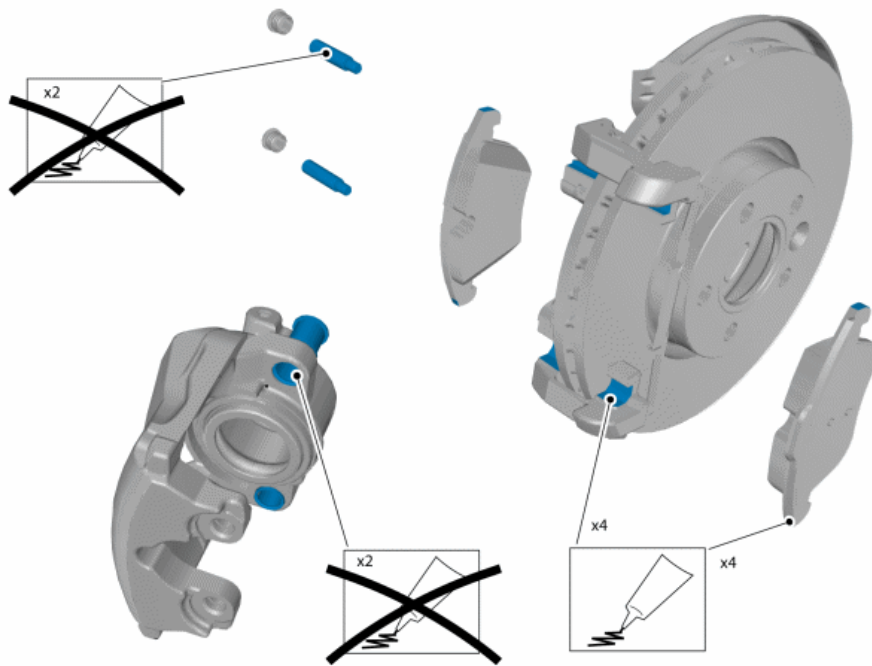


Fig. 3: Fitting New Brake Pads

Courtesy of VOLVO CARS CORPORATION

INSTALLATION

**Fig. 4: Identifying Sliding Surfaces**

Courtesy of VOLVO CARS CORPORATION

NOTE: Make sure that the mating faces are clean and free of foreign material.

Use: Silicone grease, 1161688

**Fig. 5: Identifying Contact Points**

Courtesy of VOLVO CARS CORPORATION

NOTE: Make sure that the mating faces are clean and free of foreign material.

To install, reverse the removal procedure.

FRONT BRAKE CALIPER

REMOVAL

NOTE: Removal steps in this procedure may contain installation details.

See SAFETY INFORMATION BRAKE SYSTEM

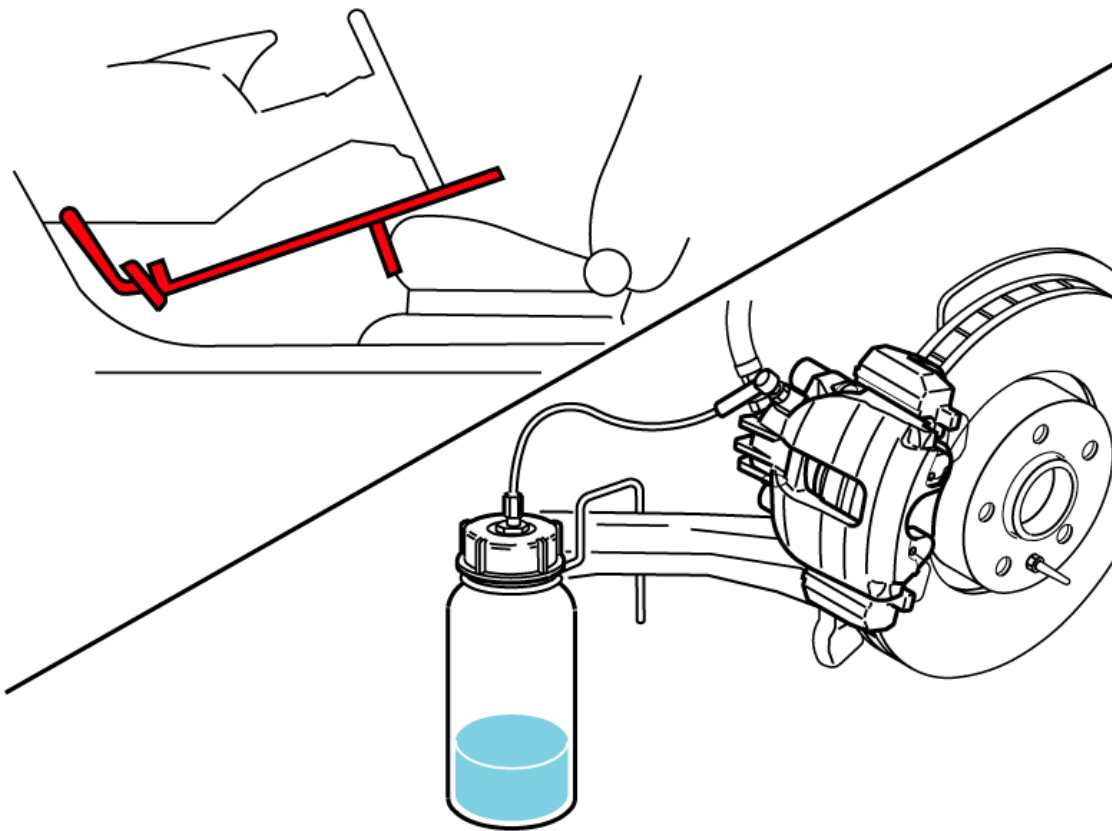


Fig. 6: Identifying Brake Bleeding
Courtesy of VOLVO CARS CORPORATION

Remove brake pads front. See BRAKE PADS, FRONT

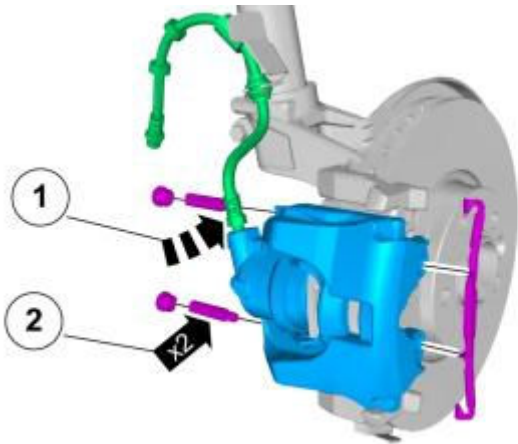


Fig. 7: Identifying Brake Components
Courtesy of VOLVO CARS CORPORATION

Remove the following items:

1. **Torque:** Brake hose to front brake caliper

18 Nm

2. **Torque:** Slide rail front brake caliper

28 Nm

Torque: Slide rail front brake caliper

60 Nm

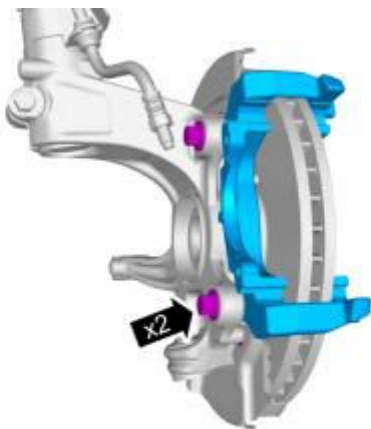


Fig. 8: Locating Caliper Mounting Bolts
Courtesy of VOLVO CARS CORPORATION

Torque: Mount front brake caliper

200 Nm

INSTALLATION

To install, reverse the removal procedure.

Perform bleeding air brake system. See **BRAKE SYSTEM BLEEDING**

FRONT BRAKE DISC

REMOVAL

NOTE: Removal steps in this procedure may contain installation details.

Remove brake calliper, front. See **FRONT BRAKE CALIPER**



Fig. 9: Locating Brake Rotor Bolt
Courtesy of VOLVO CARS CORPORATION

Torque: Brake disc front to wheel hub

35 Nm

INSTALLATION

To install, reverse the removal procedure.

REAR WHEEL BRAKE

BRAKE PADS REAR (2007-10 B8444S; 2008-10 B6304T2; 2010 B6224S2, B6324S; 2010-12 B6324S4, B6324S5, B6304T4)

2012 Volvo S80

BRAKES Wheel Brake - Removal, Replacement And Installation

Materials

Designation	Part Number
Silicone grease	1161688

REMOVAL

NOTE: Removal steps in this procedure may contain installation details.

See SAFETY INFORMATION BRAKE SYSTEM

Remove rear wheel. See WHEELS

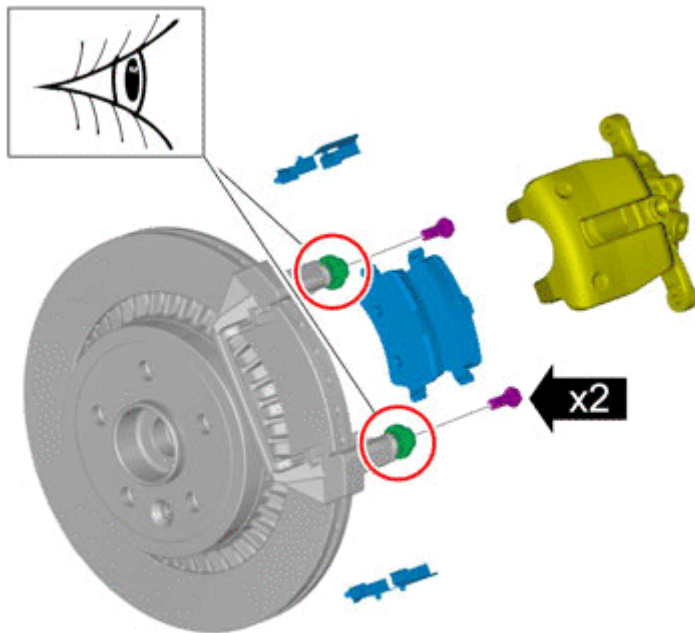


Fig. 10: Identifying Brake Caliper Bolts
Courtesy of VOLVO CARS CORPORATION

WARNING: Make sure that no load is placed on the brake hose.

Torque: Slide rail rear brake caliper (FWD)

28 Nm

Torque: Slide rail rear brake caliper (AWD)

35 Nm

INSTALLATION

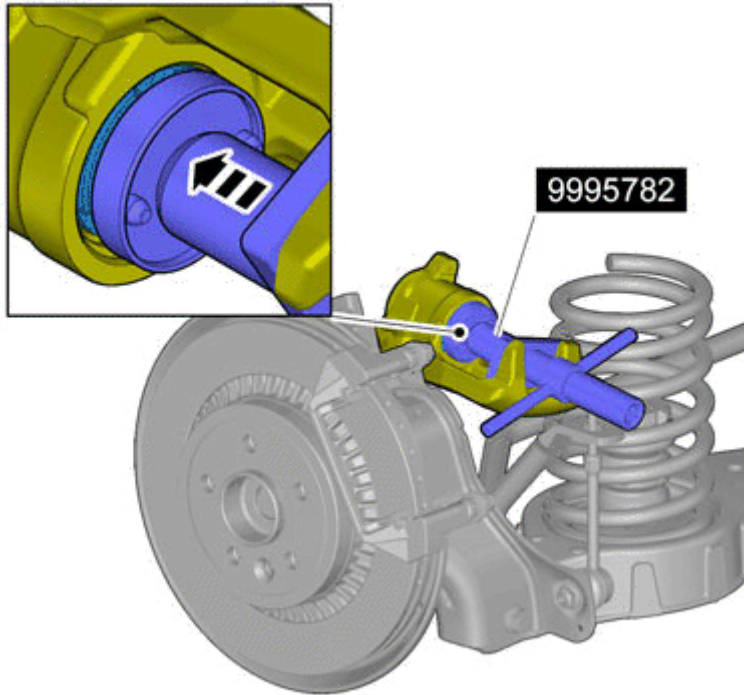


Fig. 11: Special Tool 9995782
Courtesy of VOLVO CARS CORPORATION

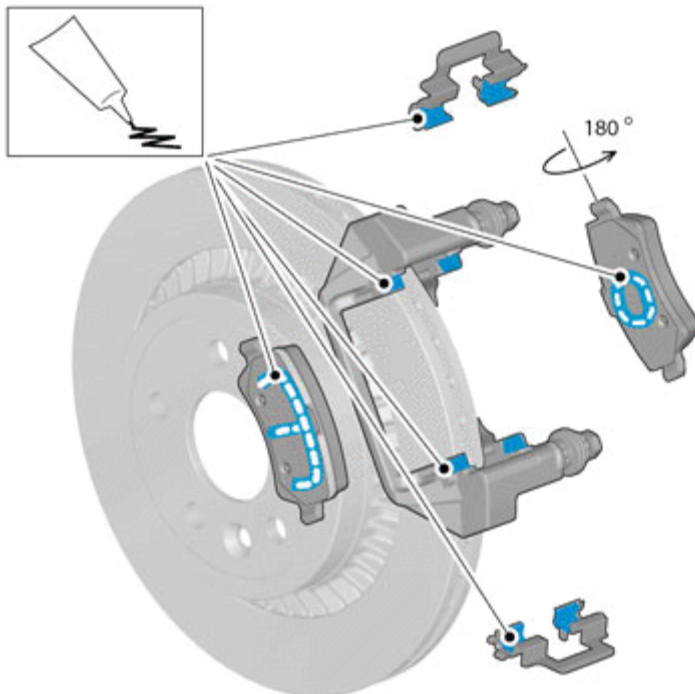


Fig. 12: Apply Silicone Grease (1161688)
Courtesy of VOLVO CARS CORPORATION

2012 Volvo S80

BRAKES Wheel Brake - Removal, Replacement And Installation

Use: Silicone grease, 1161688

To install, reverse the removal procedure.

BRAKE PADS REAR (B6324S, 2007-09)

Materials	
Designation	Part Number
Silicone grease	1161688

REMOVAL

NOTE: Removal steps in this procedure may contain installation details.

Follow instructions about safety information brake system. See **SAFETY INFORMATION BRAKE SYSTEM**

Perform parking brake, adjusting. See **PARKING BRAKE, ADJUSTING**

Remove rear wheel. See **WHEELS**

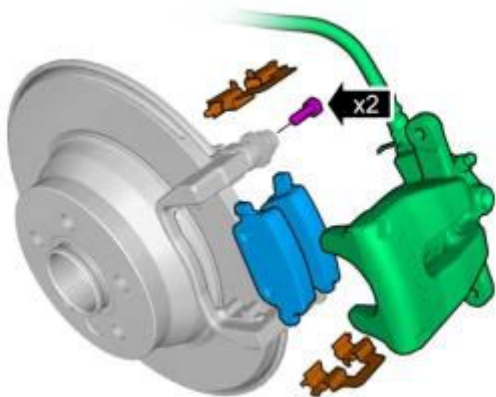


Fig. 13: Identifying Brake Caliper Bolts
Courtesy of VOLVO CARS CORPORATION

WARNING: Make sure that no load is placed on the brake hose.

Torque: Slide rail rear brake caliper AWD

35 Nm

Torque: Slide rail rear brake caliper FWD

28 Nm

INSTALLATION

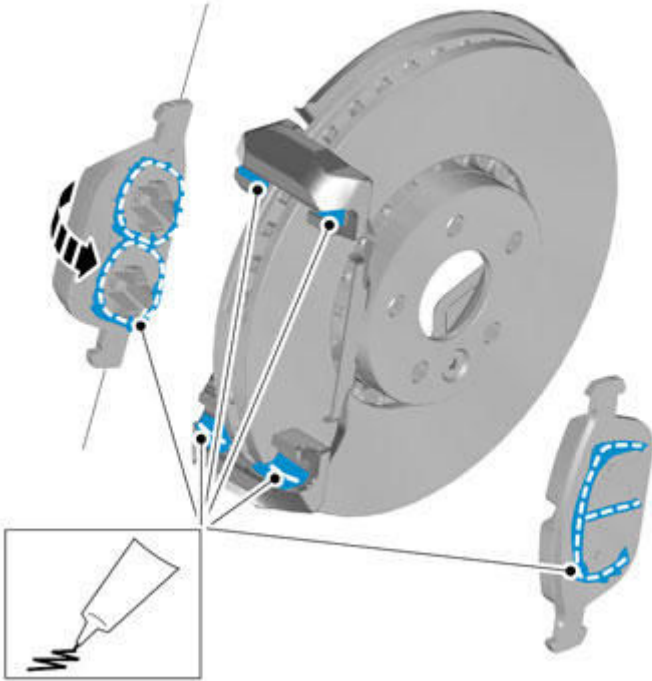


Fig. 14: Apply Silicone grease (1161688)
Courtesy of VOLVO CARS CORPORATION

NOTE: Make sure that the mating faces are clean and free of foreign material.

Use: Silicone grease, 1161688

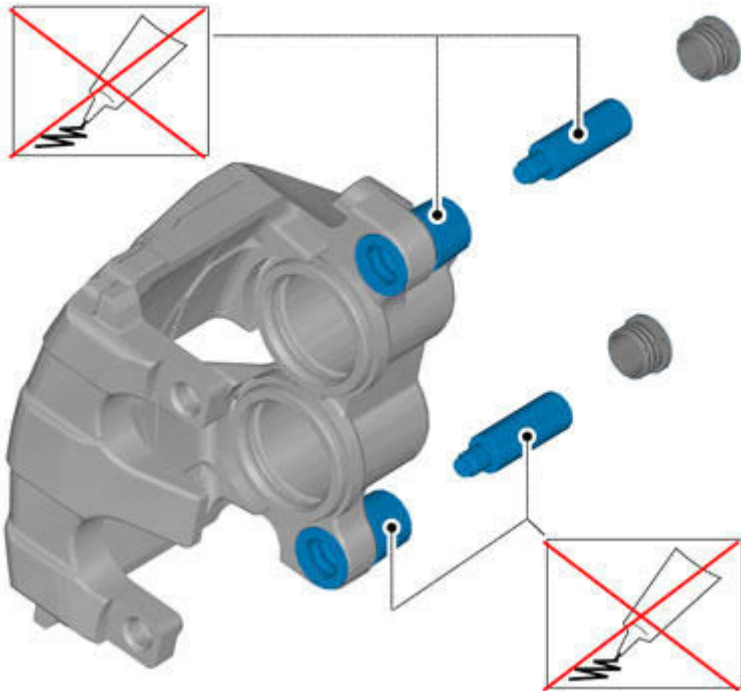


Fig. 15: Apply NO Grease
Courtesy of VOLVO CARS CORPORATION

To install, reverse the removal procedure.

Perform parking brake, adjusting. See **PARKING BRAKE, ADJUSTING**

REAR BRAKE CALIPER (2007-10 B8444S; 2008-10 B6304T2; 2010 B6224S2, B6324S; 2010-12 B6324S4, B6324S5, B6304T4)

REMOVAL

NOTE: Removal steps in this procedure may contain installation details.

Perform parking brake, adjusting. See **PARKING BRAKE, ADJUSTING (SERVICE MODE)** or **PARKING BRAKE, ADJUSTING (MECHANICAL 2007-08)**

Follow instructions for lifting points body frame. See **JACKING POINTS BODY**

Remove rear wheel. See **WHEELS**

Follow instructions about safety information brake system. See **SAFETY INFORMATION BRAKE SYSTEM**

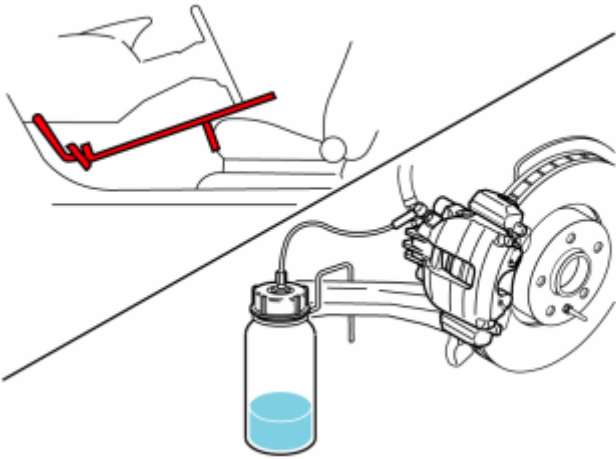


Fig. 16: Identifying Brake Bleeding
Courtesy of VOLVO CARS CORPORATION

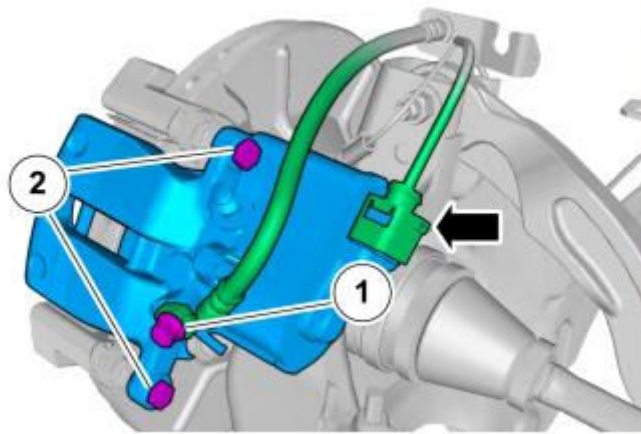


Fig. 17: Locating Caliper Bolts And Brake Line Bolt
Courtesy of VOLVO CARS CORPORATION

Remove the following items:

1. **Torque:** Brake hose to rear brake caliper

46 Nm

Torque: Brake hose to rear brake caliper

18 Nm

2. **Torque:** Slide rail rear brake caliper

35 Nm