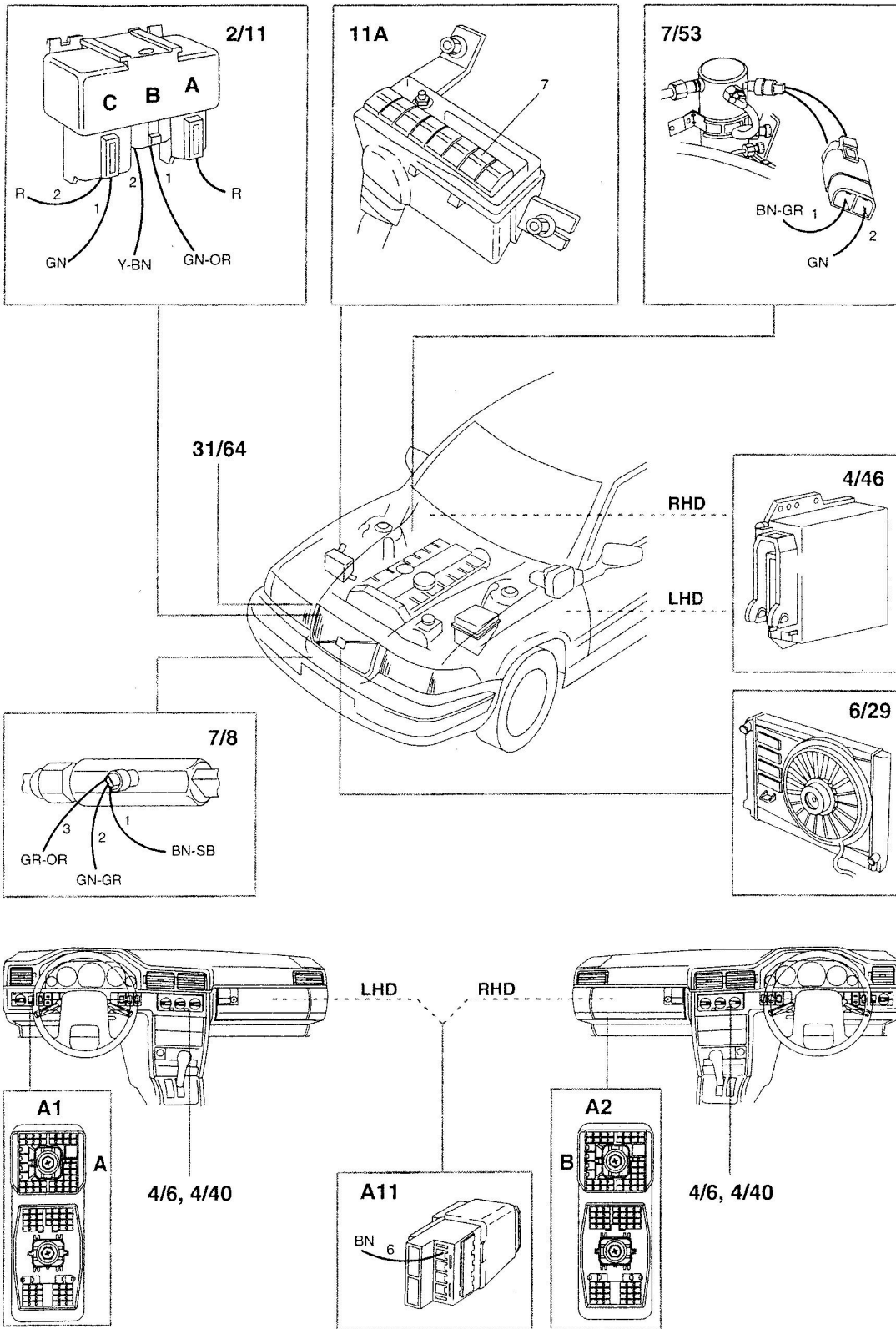


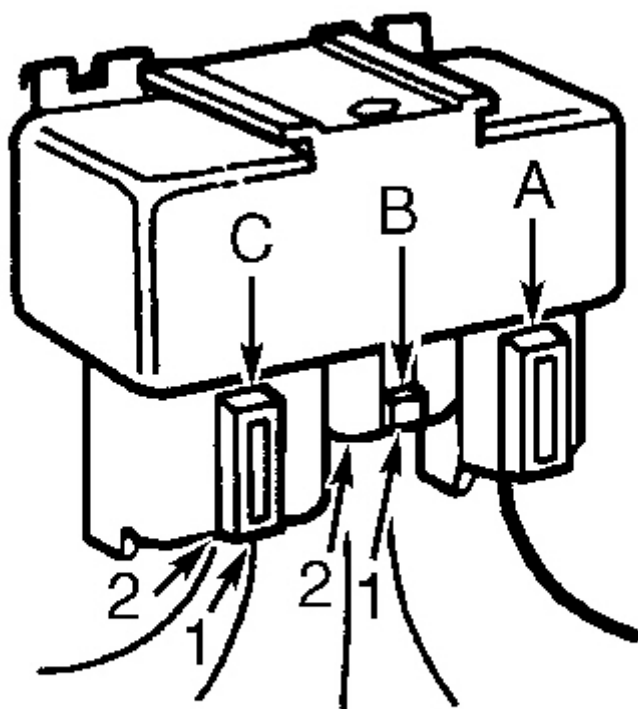
1998 Volvo V90

1996-98 ENGINE COOLING Electric Cooling Fans - 960, S90 & V90



G00283919

Fig. 2: Identifying Electric Cooling Fan Components (1997-98)
Courtesy of VOLVO CARS OF NORTH AMERICA.



G95C34472

Fig. 3: Identifying Engine Cooling Fan Relay Connectors

PROGRAMMING

BATTERY DISCONNECT PRECAUTIONS

Make a note of radio code if anti-theft coded radio installed.

SELF-DIAGNOSTIC SYSTEM

ELECTRIC COOLING FAN

The electric cooling fan relays on Motronic 4.4 system are controlled by the ECM. Some cooling fan relay problems may set a Diagnostic Trouble Code (DTC) P1619 or P1620. Engine Coolant Temperature Sensor (ECT) faults are also monitored by the ECM and will set a DTC.

NOTE: For more information on the self-diagnostic system, see appropriate article in ENGINE PERFORMANCE.