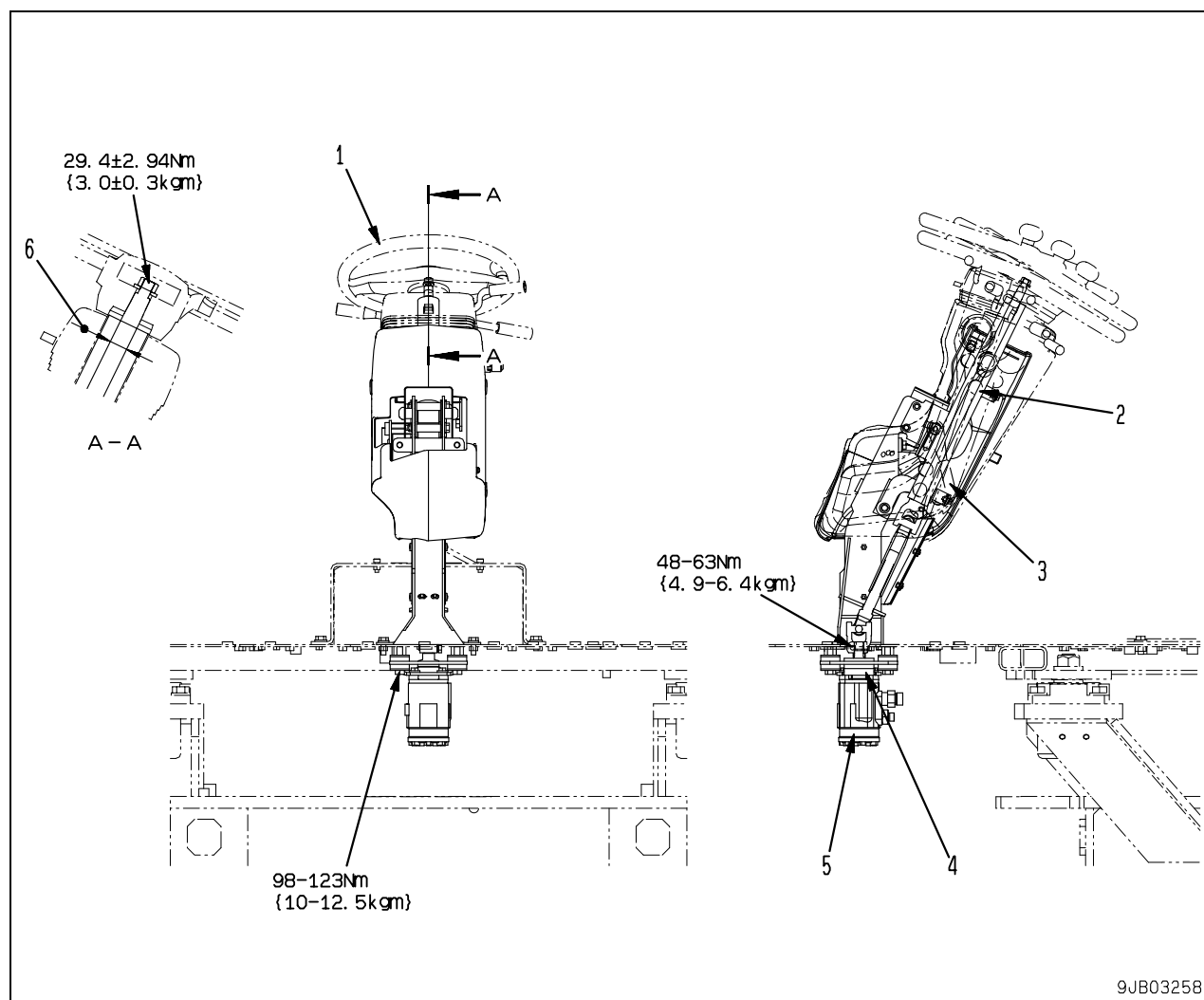


Steering column



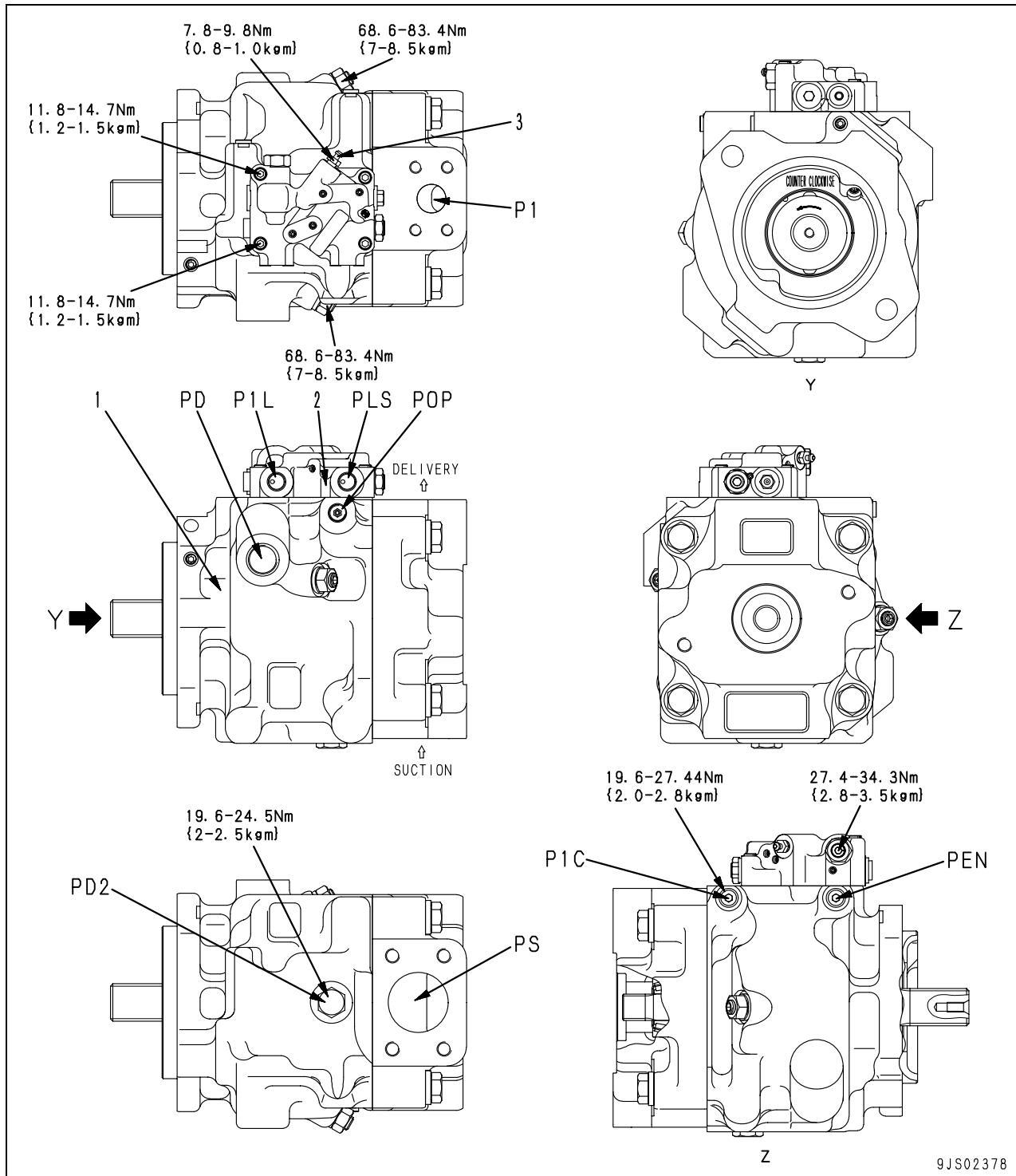
1. Steering wheel
2. Steering column
3. Tilt lever
4. Short column
5. Orbit-roll valve

Unit: mm

No.	Check item	Criteria					Remedy
6	Clearance between steering shaft and column bushing	Standard size	Tolerance		Standard clearance	Clearance limit	Replace
			Shaft	Hole			
		19	0 −0.08	+0.15 +0.05	0.05 – 0.23	0.4	

Steering pump

Type: LPV63



P1: Pump discharge port

PD: Drain port

PS: Pump suction port

P1C: Pump pressure pickup plug

P1L: Pump pressure input port

PD2: Drain plug

PEN: Control pressure pickup plug

PLS: Load pressure input port

POP: External pilot pressure input port

1. Pump unit

2. Servo valve

3. Air bleeder