

7. Install:

- clutch master cylinder
- clutch master cylinder holder ①

10 Nm (1.0 m · kg)

NOTE:

Align the slit in the clutch master cylinder holder with the punch mark ② in the left handlebar.

8. Adjust:

- throttle cable free play

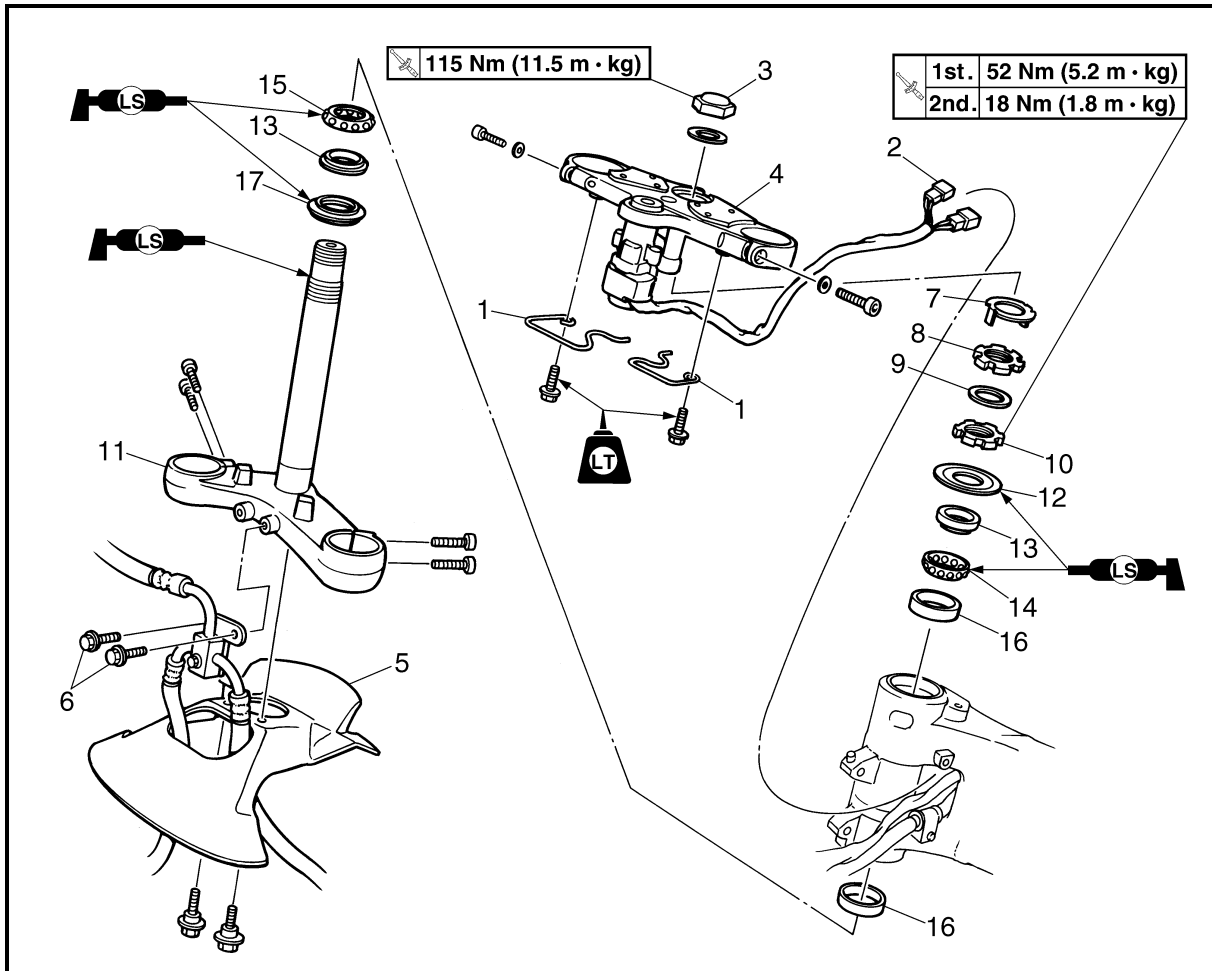
Refer to “ADJUSTING THE THROTTLE CABLE FREE PLAY” in chapter 3.



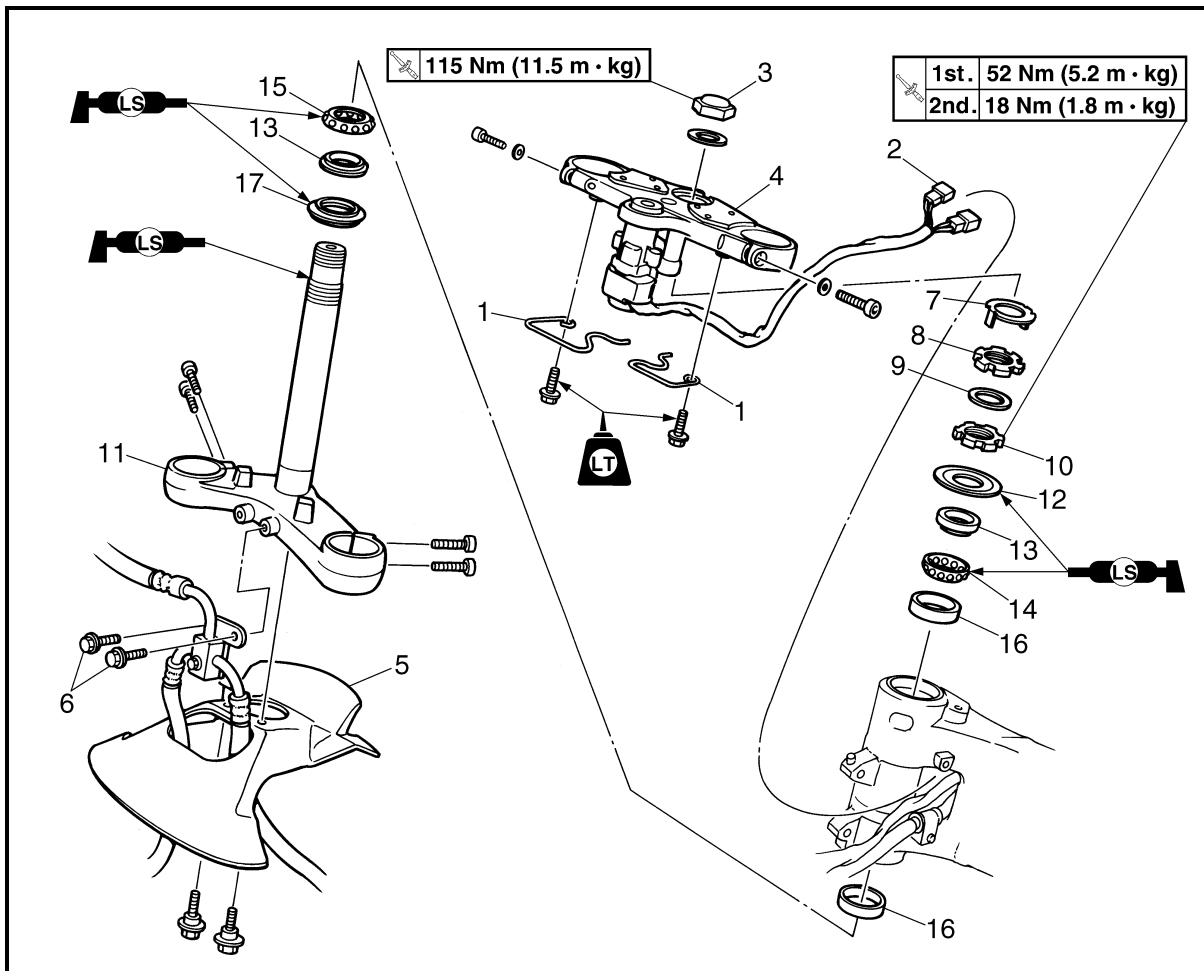
Throttle cable free play (at the flange of the throttle grip)
3 ~ 5 mm

EAS00676

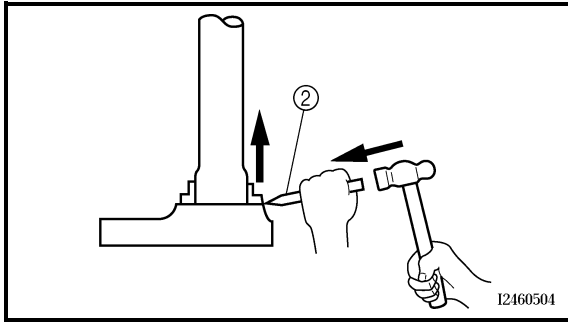
STEERING HEAD



Order	Job/Part	Q'ty	Remarks
	Removing the lower bracket		
	Front wheel		Remove the parts in the order listed. Refer to "FRONT WHEEL AND BRAKE DISCS".
	Front fork legs		Refer to "FRONT FORK".
	Handlebars		Refer to "HANDLEBARS".
1	Lead guide	2	
2	Main switch coupler	2	Disconnect.
3	Steering stem nut	1	} Refer to "INSTALLING THE STEERING HEAD".
4	Upper bracket	1	
5	Lower bracket panel	1	
6	Brake hose holding bolt	2	



Order	Job/Part	Q'ty	Remarks
7	Lock washer	1	Refer to "REMOVING THE LOWER BRACKET" and "INSTALLING THE STEERING HEAD".
8	Upper ring nut	1	
9	Rubber washer	1	
10	Lower ring nut	1	
11	Lower bracket	1	
12	Bearing cover	1	
13	Bearing inner race	2	For installation, reverse the removal procedure.
14	Upper bearing	1	
15	Lower bearing	1	
16	Bearing outer race	2	
17	Dust seal	1	



- b. Remove the bearing race from the lower bracket with a floor chisel ② and hammer.
- c. Install a new rubber seal and new bearing races.

CAUTION:

If the bearing race is not installed properly, the steering head pipe could be damaged.

NOTE:

- Always replace the bearings and bearing races as a set.
- Whenever the steering head is disassembled, replace the rubber seal.



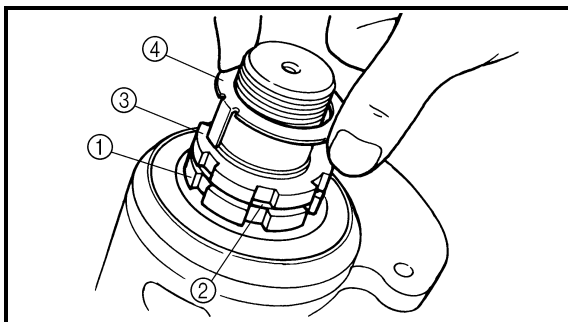
- 4. Check:
 - upper bracket
 - lower bracket (along with the steering stem)
 - Bends/cracks/damage → Replace.

EAS00683

INSTALLING THE STEERING HEAD

- 1. Lubricate:
 - upper bearing
 - lower bearing
 - bearing races

	<p>Recommended lubricant Lithium soap base grease</p>
---	---



- 2. Install:
 - lower ring nut ①
 - rubber washer ②
 - upper ring nut ③
 - lock washer ④

Refer to “CHECKING AND ADJUSTING THE STEERING HEAD” in chapter 3.

STEERING HEAD

CHAS




-
3. Install:
- upper bracket
 - steering stem nut

NOTE: _____
Temporarily tighten the steering stem nut.

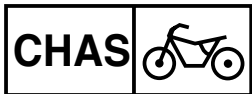
4. Install:
- front fork legs
Refer to "FRONT FORK".

NOTE: _____
Temporarily tighten the lower and upper
bracket pinch bolts.

5. Tighten:
- steering stem nut

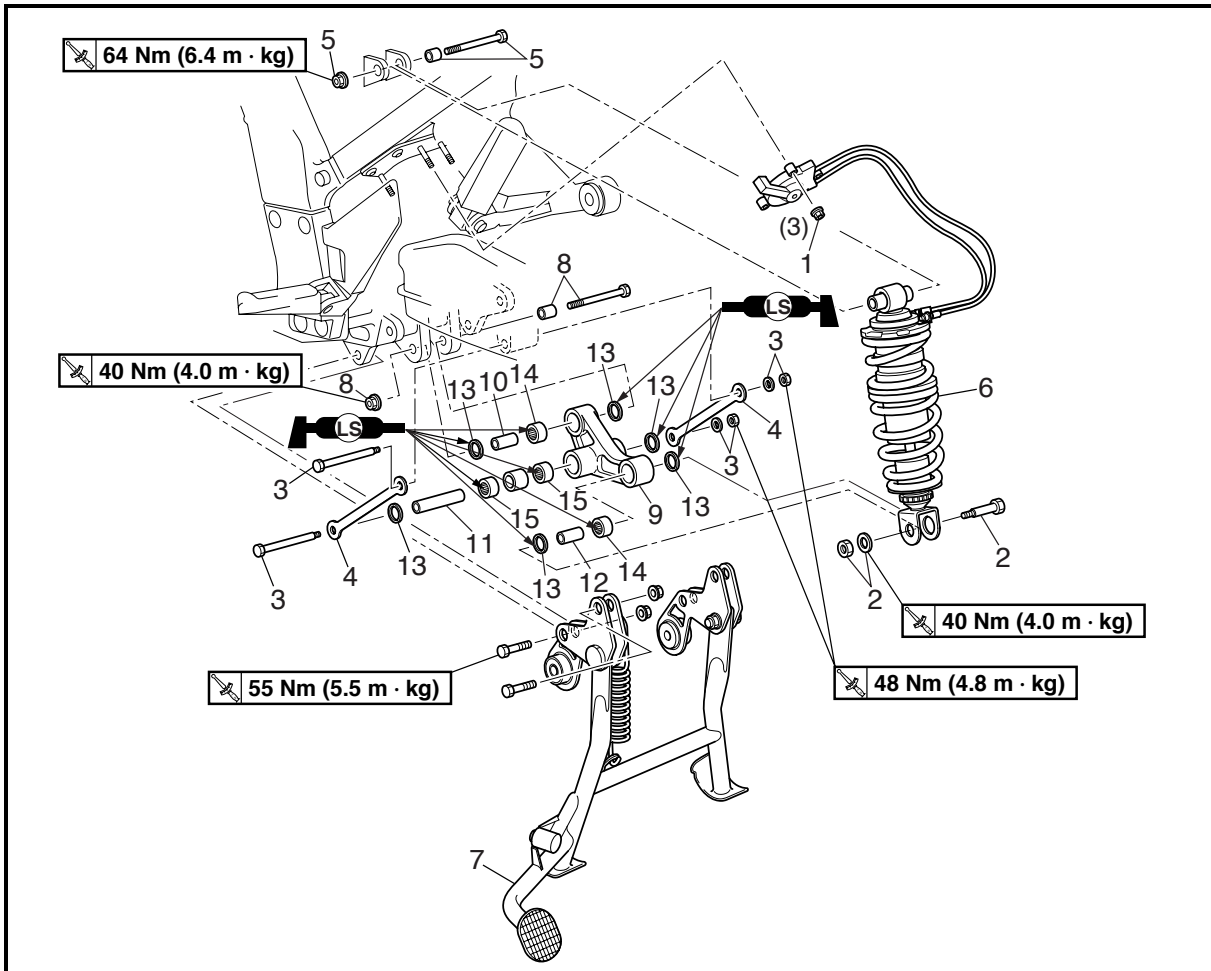
 115 Nm (11.5 m · kg)

REAR SHOCK ABSORBER ASSEMBLY AND RELAY ARM



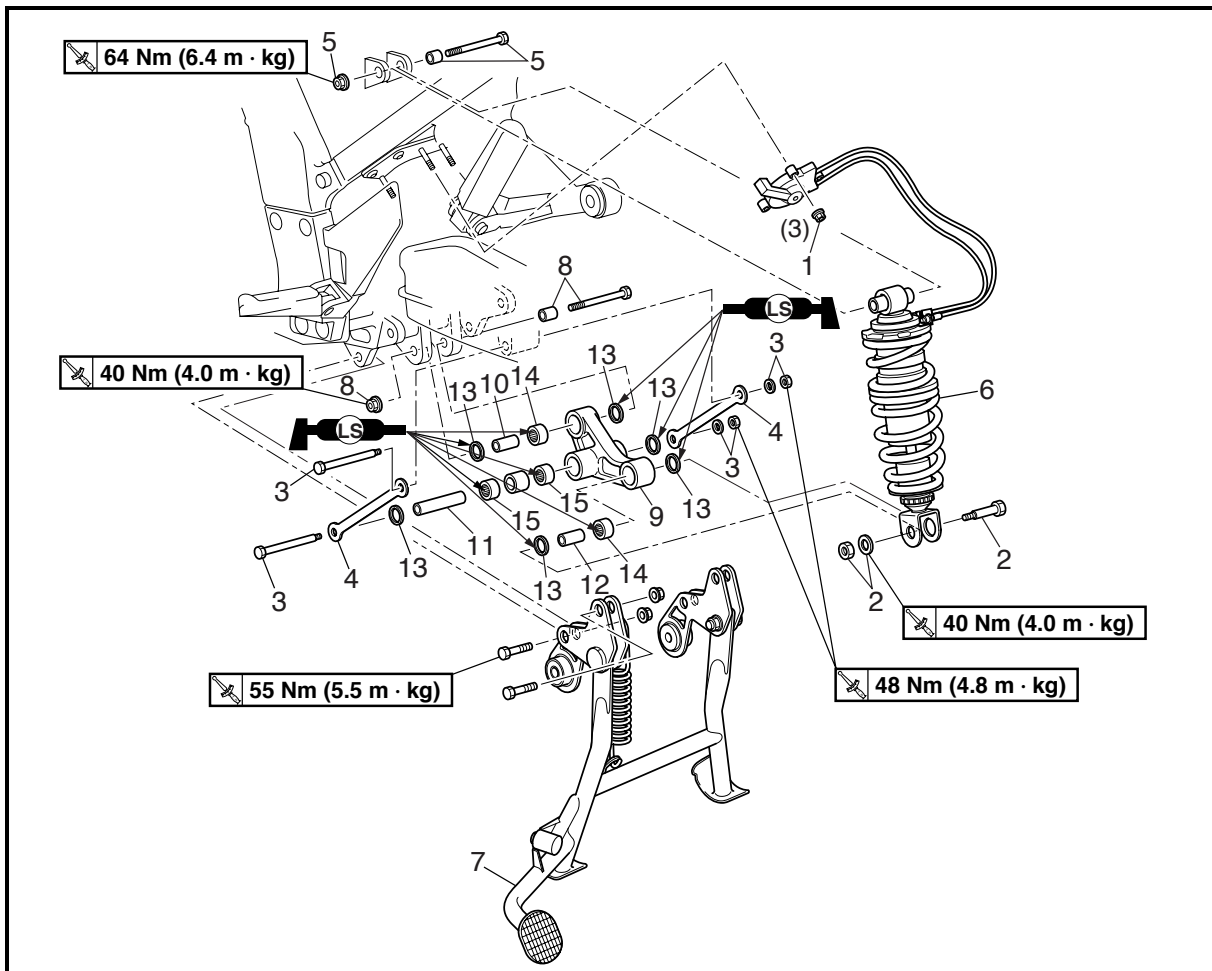
EAS00685

REAR SHOCK ABSORBER ASSEMBLY AND RELAY ARM



Order	Job/Part	Q'ty	Remarks	
	Removing the rear shock absorber assembly and relay arm		Remove the parts in the order listed.	
	Rear wheel		Refer to "REAR WHEEL AND BRAKE DISC".	
	Mufflers/exhaust pipe		Refer to "ENGINE" in chapter 5.	
1	Nut	3	Refer to "REMOVING/INSTALLING THE REAR SHOCK ABSORBER ASSEMBLY".	
2	Nut/washer/bolt	1/1/1		Bolt $\ell = 54$ mm
3	Nut/washer/bolt	2/2/2		Bolt $\ell = 117$ mm
4	Connecting arm	2		
5	Nut/bolt/spacer	1/1/1		Bolt $\ell = 105$ mm
6	Rear shock absorber assembly	1		
7	Centerstand	1		
8	Nut/bolt/spacer	1/1/1	Bolt $\ell = 76$ mm	
9	Relay arm	1		
10	Collar	1		

REAR SHOCK ABSORBER ASSEMBLY AND RELAY ARM



Order	Job/Part	Q'ty	Remarks
11	Collar	1	Refer to "INSTALLING THE RELAY ARM". For installation, reverse the removal procedure.
12	Collar	1	
13	Oil seal	6	
14	Bearing	2	
15	Bearing	2	