

5. Install:
- Washer
 - Oil seal "1"
(with the fork seal driver and adapter)

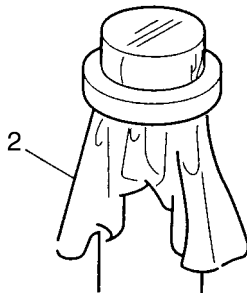
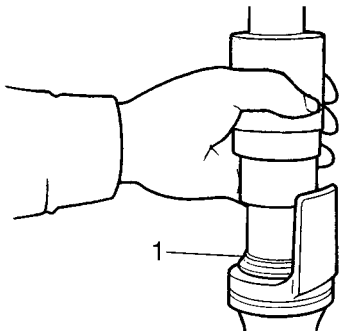
ECA14220

CAUTION:

Make sure the numbered side of the oil seal faces up.

NOTE:

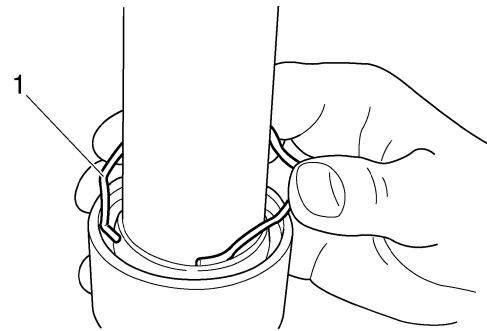
- Before installing the oil seal, lubricate its lips with lithium soap base grease.
- Lubricate the outer surface of the inner tube with fork oil.
- Before installing the oil seal, cover the top of the front fork leg with a plastic bag "2" to protect the oil seal during installation.



6. Install:
- Oil seal clip "1"

NOTE:

Adjust the oil seal clip so that it fits into the outer tube's groove.

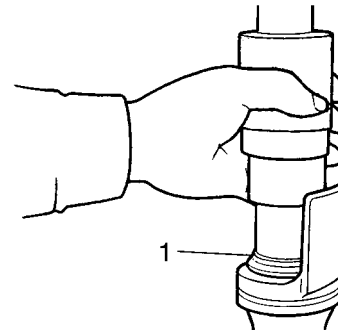


7. Install:

- Dust seal "1"
(with the fork seal driver weight)



**Fork seal driver weight
90890-01367
Replacement hammer
YM-A9409-7**



8. Fill:

- Front fork leg
(with the specified amount of the recommended fork oil)



**Quantity
467.0 cm³ (15.79 US oz) (16.47 Imp.oz)
Recommended oil
Suspension oil 01 or equivalent**


ECA4S81015

CAUTION:

- **Be sure to use the recommended fork oil. Other oils may have an adverse effect on front fork performance.**
- **When disassembling and assembling the front fork leg, do not allow any foreign material to enter the front fork.**

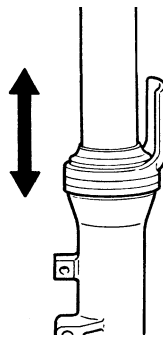
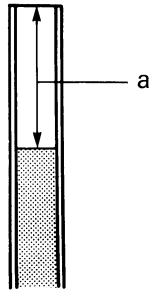
9. Measure:

- Front fork leg oil level “a”
Out of specification → Correct.

	Level 134.0 mm (5.28 in)
-----------------------------------------------------------------------------------	-------------------------------------------

NOTE:

- While filling the front fork leg, keep it upright.
- After filling, slowly pump the front fork leg up and down to distribute the fork oil.

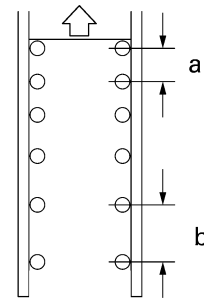
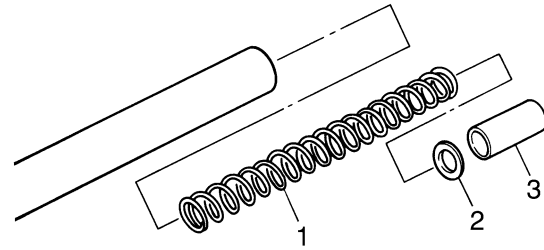


10. Install:

- Spring “1”
- Spring seat “2”
- Spacer “3”
- Cap bolt

NOTE:

- Install the spring with the smaller pitch “a” facing down.
- Before installing the cap bolt, lubricate its O-ring with grease.
- Temporarily tighten the cap bolt.



b. Lager pitch

EAS23050

INSTALLING THE FRONT FORK LEGS

The following procedure applies to both of the front fork legs.

1. Install:


- Front fork leg
Temporarily tighten the upper and lower bracket pinch bolts.

NOTE:


Make sure the inner fork tube is flush with the top of the handlebar holder.

2. Tighten:


- Lower bracket pinch bolt “1”

	Lower bracket pinch bolt 30 Nm (3.0 m·kg, 22 ft·lb)
-------------------------------------------------------------------------------------	----------------------------------------------------------------------

- Cap bolt “2”

	Cap bolt 24 Nm (2.4 m·kg, 17 ft·lb)
-------------------------------------------------------------------------------------	------------------------------------------------------

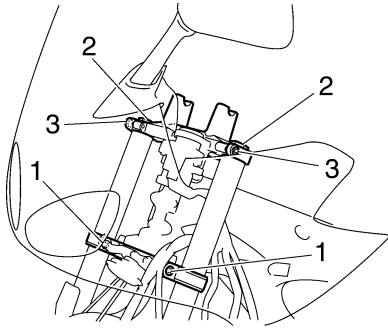
- Upper bracket pinch bolt “3”

	Upper bracket pinch bolt 30 Nm (3.0 m·kg, 22 ft·lb)
-------------------------------------------------------------------------------------	----------------------------------------------------------------------

EWA13680

WARNING

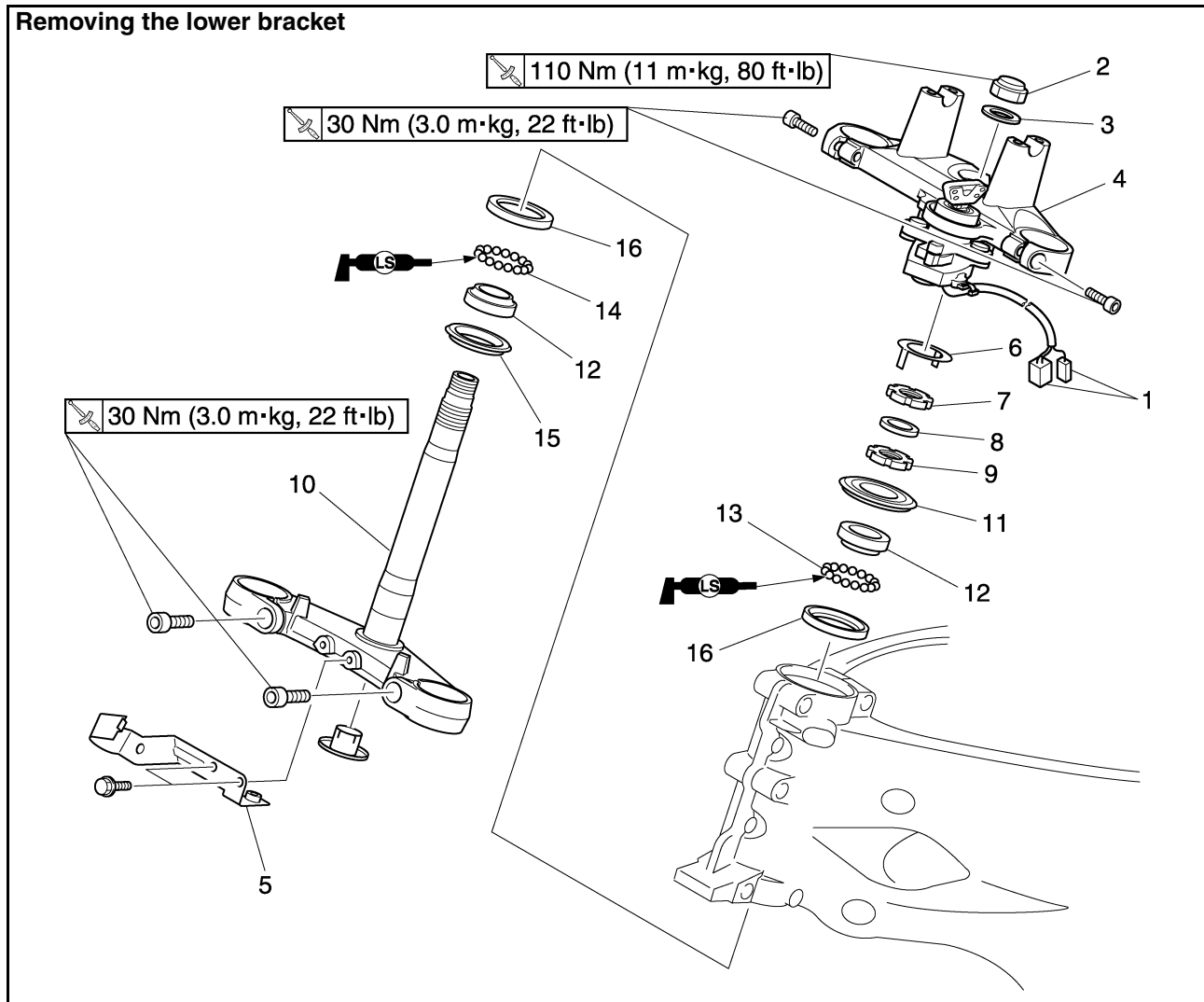
Make sure the brake hoses are routed properly.



EAS23090

STEERING HEAD

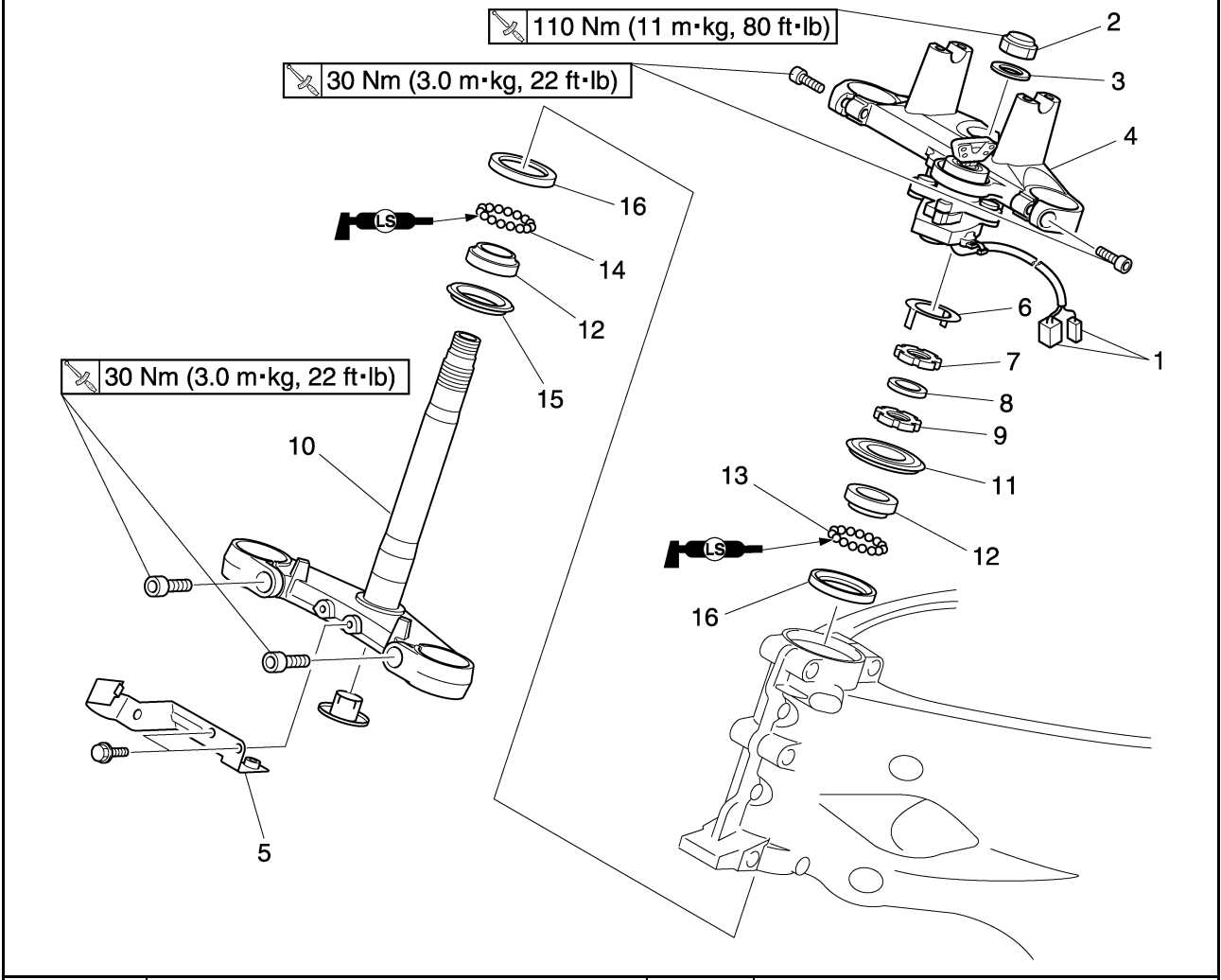
Removing the lower bracket



Order	Job/Parts to remove	Q'ty	Remarks
	Front wheel		Refer to "FRONT WHEEL" on page 4-5.
	Front fender		Refer to "FRONT FORK" on page 4-43.
	Front fork		Refer to "FRONT FORK" on page 4-43.
	Handlebar		Refer to "HANDLEBAR" on page 4-39.
	Front cowling inner panel (left side)		Refer to "GENERAL CHASSIS" on page 4-1.
	Front cowling inner panel (right side)		Refer to "GENERAL CHASSIS" on page 4-1.
	Fuel tank		Refer to "FUEL TANK" on page 7-1.
1	Main switch coupler	2	Disconnect.
2	Steering stem nut	1	
3	Washer	1	
4	Upper bracket	1	
5	Horn stay	1	
6	Lock washer	1	
7	Upper ring nut	1	
8	Rubber washer	1	
9	Lower ring nut	1	
10	Lower bracket	1	
11	Bearing cover	1	
12	Bearing inner race	2	

STEERING HEAD

Removing the lower bracket



Order	Job/Parts to remove	Q'ty	Remarks
13	Upper bearing	1	
14	Lower bearing	1	
15	Dust seal	1	
16	Bearing outer race	2	
			For installation, reverse the removal procedure.

EAS23110

REMOVING THE LOWER BRACKET

1. Stand the vehicle on a level surface.

EWA13120



WARNING

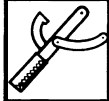
Securely support the vehicle so that there is no danger of it falling over.

2. Remove:

- Steering stem nut
- Washer
- Upper ring nut
- Lock washer
- Rubber washer
- Lower ring nut "1"
(with the steering nut wrench "2")
- Lower bracket

NOTE:

Hold the lower ring nut with the exhaust and steering nut wrench, and then remove the upper ring nut with the ring nut wrench.



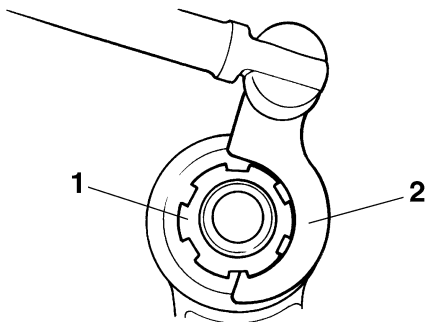
Steering nut wrench
90890-01403
Spanner wrench
YU-33975

EWA13730



WARNING

Securely support the lower bracket so that there is no danger of it falling.

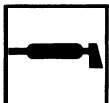


EAS23130

CHECKING THE STEERING HEAD

1. Wash:

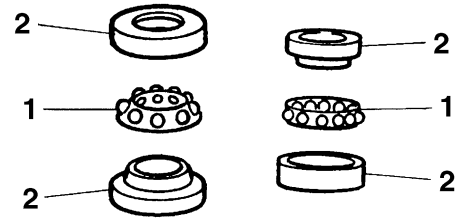
- Bearing balls
- Bearing races



Recommended cleaning solvent
Kerosene

2. Check:

- Bearing balls "1"
- Bearing races "2"
Damage/pitting → Replace.



3. Replace:

- Bearing balls
- Bearing races



- a. Remove the bearing races "1" from the steering head pipe with a long rod "2" and hammer.
- b. Remove the bearing race "3" from the lower bracket with a floor chisel "4" and hammer.
- c. Install a new dust seal and new bearing races.

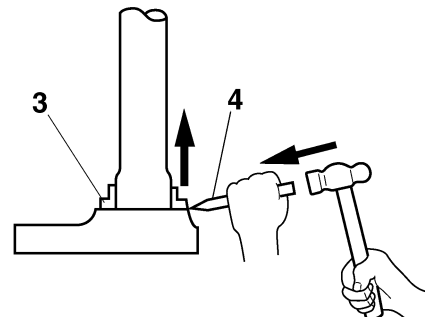
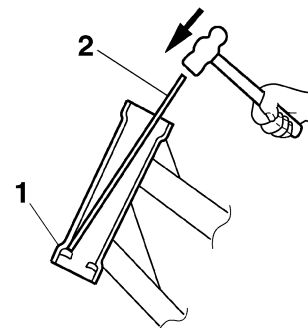
ECA14270

CAUTION:

If the bearing race is not installed properly, the steering head pipe could be damaged.

NOTE:

- Always replace the bearings and bearing races as a set.
- Whenever the steering head is disassembled, replace the rubber seal.



4. Check:
 - Upper bracket
 - Lower bracket
(along with the steering stem)
Bends/cracks/damage → Replace.

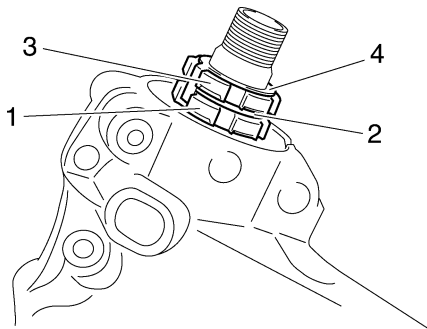
EAS23140

INSTALLING THE STEERING HEAD

1. Lubricate:
 - Upper bearing
 - Lower bearing
 - Bearing races



2. Install:
 - Lower bracket
 - Lower ring nut "1"
 - Rubber washer "2"
 - Upper ring nut "3"
 - Lock washer "4"Refer to "CHECKING THE STEERING HEAD" on page 4-53.



3. Install:
 - Upper bracket
 - Washer
 - Steering stem nut

NOTE: _____
Temporarily tighten the steering stem nut.

4. Install:
 - Front fork legs
Refer to "INSTALLING THE FRONT FORK LEGS" on page 4-49.

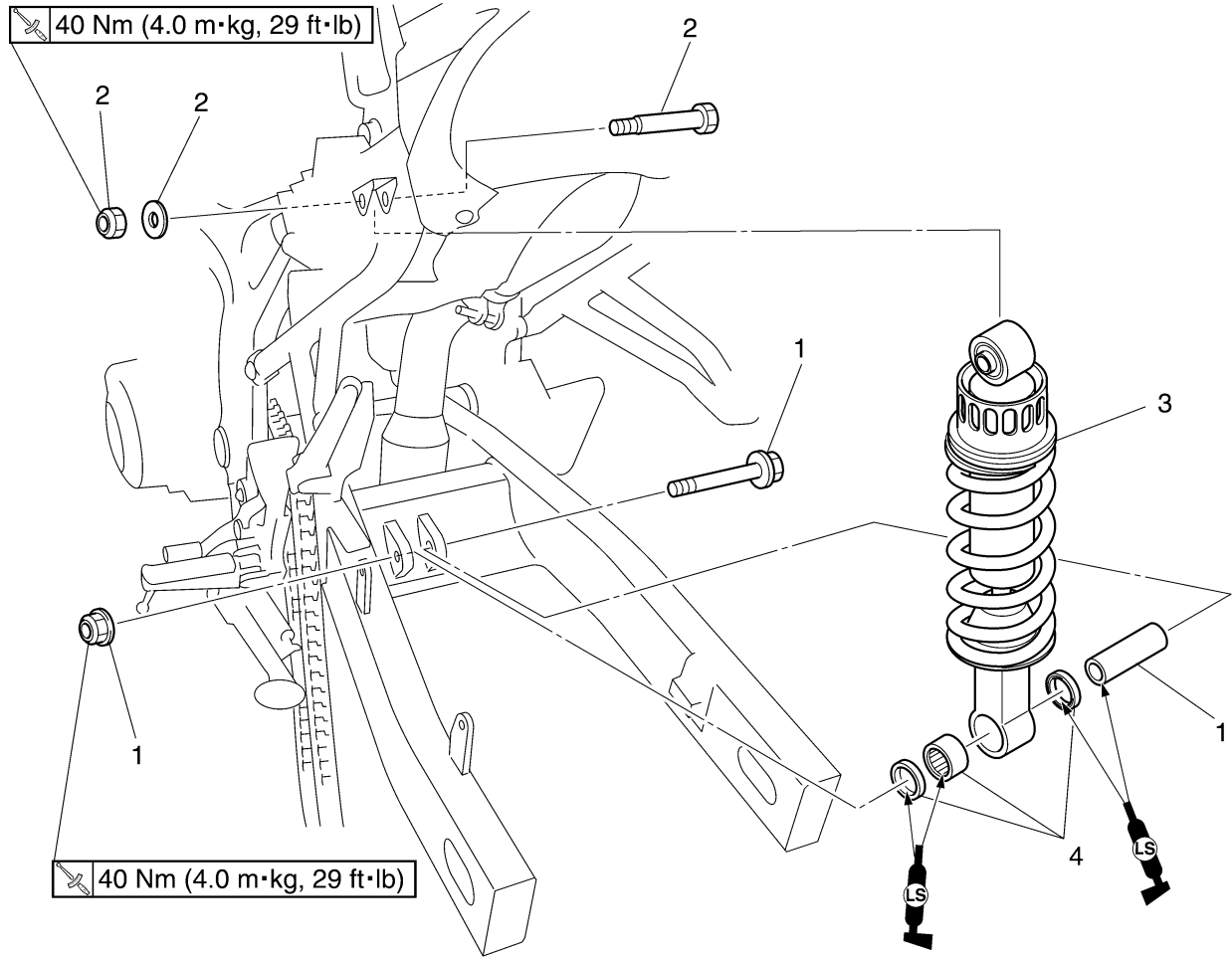
NOTE: _____
Temporarily tighten the upper and lower bracket pinch bolts.

REAR SHOCK ABSORBER ASSEMBLY

EAS23160

REAR SHOCK ABSORBER ASSEMBLY

Removing the rear shock absorber assembly



Order	Job/Parts to remove	Q'ty	Remarks
	Seat		Refer to "GENERAL CHASSIS" on page 4-1.
	Side cover		Refer to "GENERAL CHASSIS" on page 4-1.
	Rear brake caliper		Refer to "REAR BRAKE" on page 4-27.
	Rear wheel		Refer to "REAR WHEEL" on page 4-10.
1	Self-locking nut/collar/bolt	1/1/1	
2	Self-locking nut/washer/bolt	1/1/1	
3	Rear shock absorber assembly	1	
4	Oil seal/bearing	2/1	
			For installation, reverse the removal procedure.

REAR SHOCK ABSORBER ASSEMBLY

EAS23180

HANDLING THE REAR SHOCK ABSORBER

EWA13740

WARNING

This rear shock absorber contains highly compressed nitrogen gas. Before handling the rear shock absorber, read and make sure you understand the following information. The manufacturer cannot be held responsible for property damage or personal injury that may result from improper handling of the rear shock absorber.

- Do not tamper or attempt to open the rear shock absorber.
- Do not subject the rear shock absorber to an open flame or any other source of high heat. High heat can cause an explosion due to excessive gas pressure.
- Do not deform or damage the rear shock absorber in any way. Rear shock absorber damage will result in poor damping performance.

EAS23190

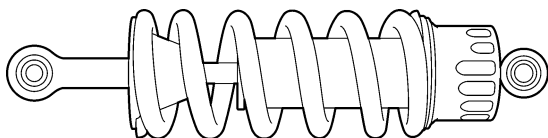
DISPOSING OF A REAR SHOCK ABSORBER

1. Gas pressure must be released before disposing of a rear shock absorber. To release the gas pressure, drill a 2–3-mm hole through the rear shock absorber at a point 15–20 mm from its end as shown.

EWA13760

WARNING

Wear eye protection to prevent eye damage from released gas or metal chips.



EAS23210

REMOVING THE REAR SHOCK ABSORBER ASSEMBLY

1. Stand the vehicle on a level surface.

EWA13120

WARNING

Securely support the vehicle so that there is no danger of it falling over.

NOTE:

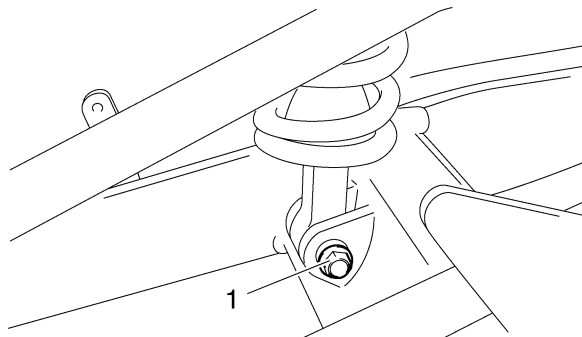
Place the vehicle on a suitable stand so that the rear wheel is elevated.

2. Remove:

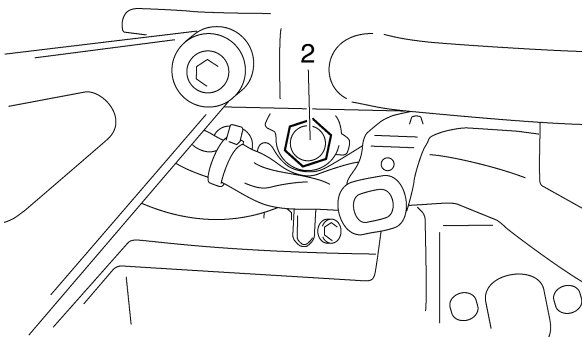
- Seat
 - Side cover
Refer to "GENERAL CHASSIS" on page 4-1.
 - Rear wheel
Refer to "REAR WHEEL" on page 4-10.
3. Remove:
 - Rear shock absorber assembly lower bolt "1"

NOTE:

While removing the rear shock absorber assembly lower bolt, hold the swingarm so that it does not drop down.



4. Remove:
 - Rear shock absorber assembly upper bolt "2"
 - Rear shock absorber assembly



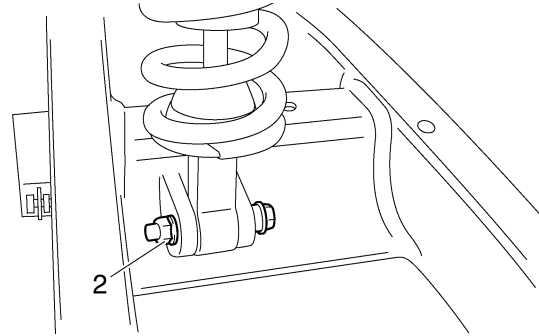
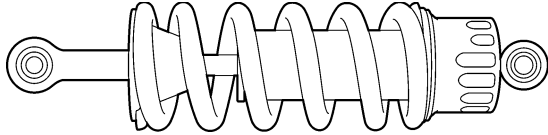
EAS23240

CHECKING THE REAR SHOCK ABSORBER ASSEMBLY

1. Check:
 - Rear shock absorber rod
Bends/damage → Replace the rear shock absorber assembly.
 - Rear shock absorber
Gas leaks/oil leaks → Replace the rear shock absorber assembly.
 - Spring
Damage/wear → Replace the rear shock absorber assembly.

REAR SHOCK ABSORBER ASSEMBLY

- Bushings
Damage/wear → Replace.
- Dust seals
Damage/wear → Replace.
- Bolts
Bends/damage/wear → Replace.



EAS23300

INSTALLING THE REAR SHOCK ABSORBER ASSEMBLY

1. Lubricate:
 - Collar
 - Bearings
 - Oil seals



Recommended lubricant
Molybdenum disulfide grease

2. Install:
 - Rear shock absorber assembly

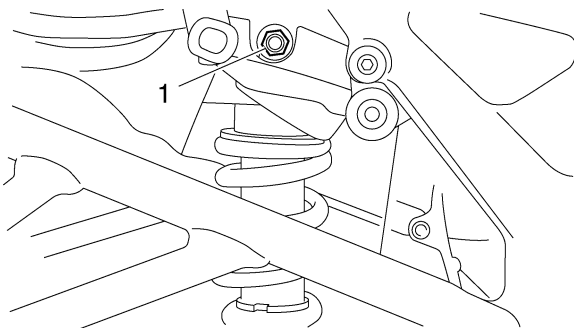
NOTE:

When installing the rear shock absorber assembly, lift up the swingarm.

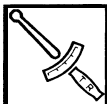
3. Tighten:
 - Rear shock absorber assembly upper nut
"1"



Rear shock absorber assembly upper nut
40 Nm (4.0 m·kg, 29 ft·lb)



- Rear shock absorber assembly lower nut
"2"



Rear shock absorber assembly lower nut
40 Nm (4.0 m·kg, 29 ft·lb)

4. Install:
 - Rear wheel
Refer to "REAR WHEEL" on page 4-10.
5. Adjust:
 - Drive chain slack
Refer to "ADJUSTING THE DRIVE CHAIN SLACK" on page 3-25.

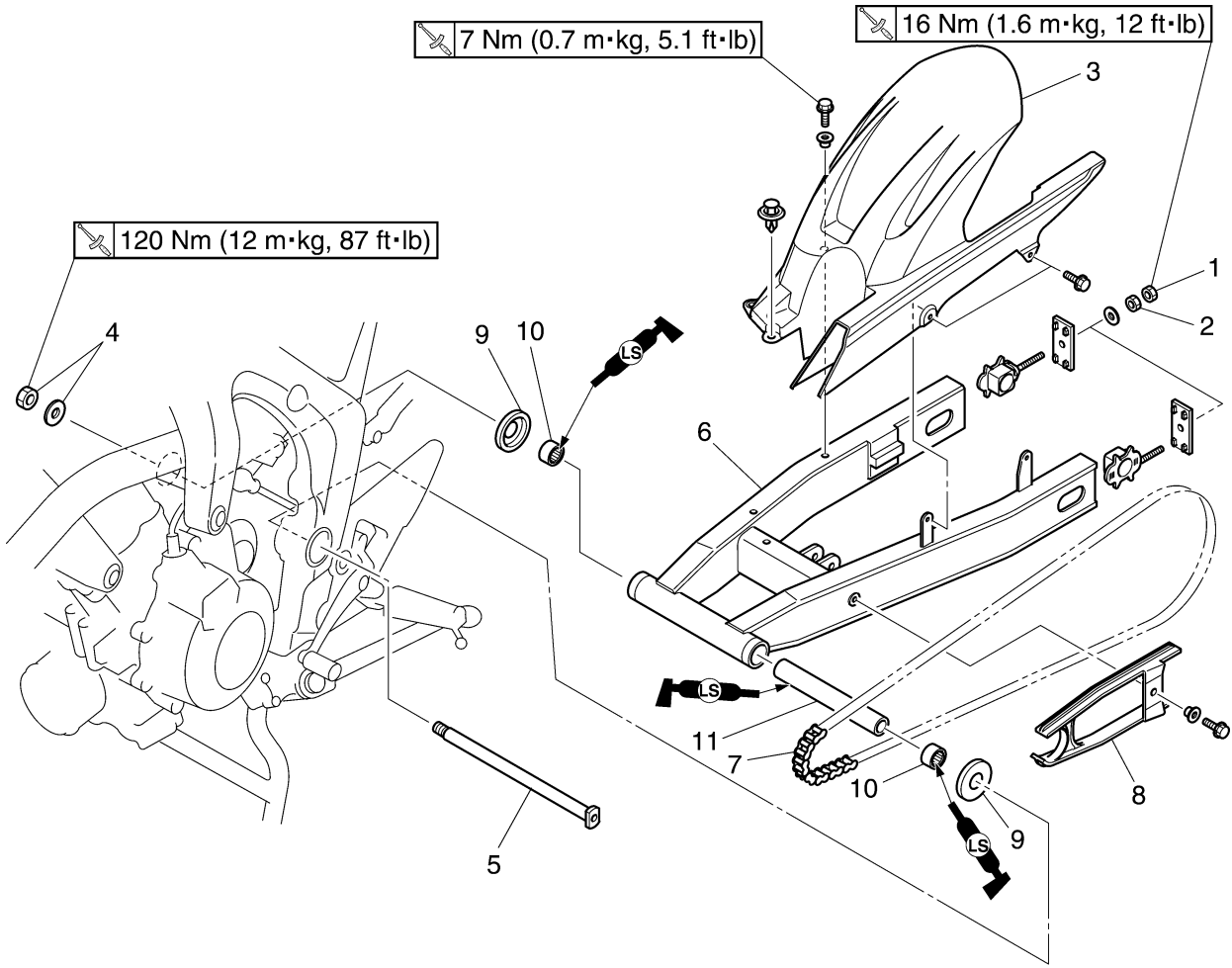


Drive chain slack
45.0–55.0 mm (1.77–2.17 in)

EAS23330

SWINGARM

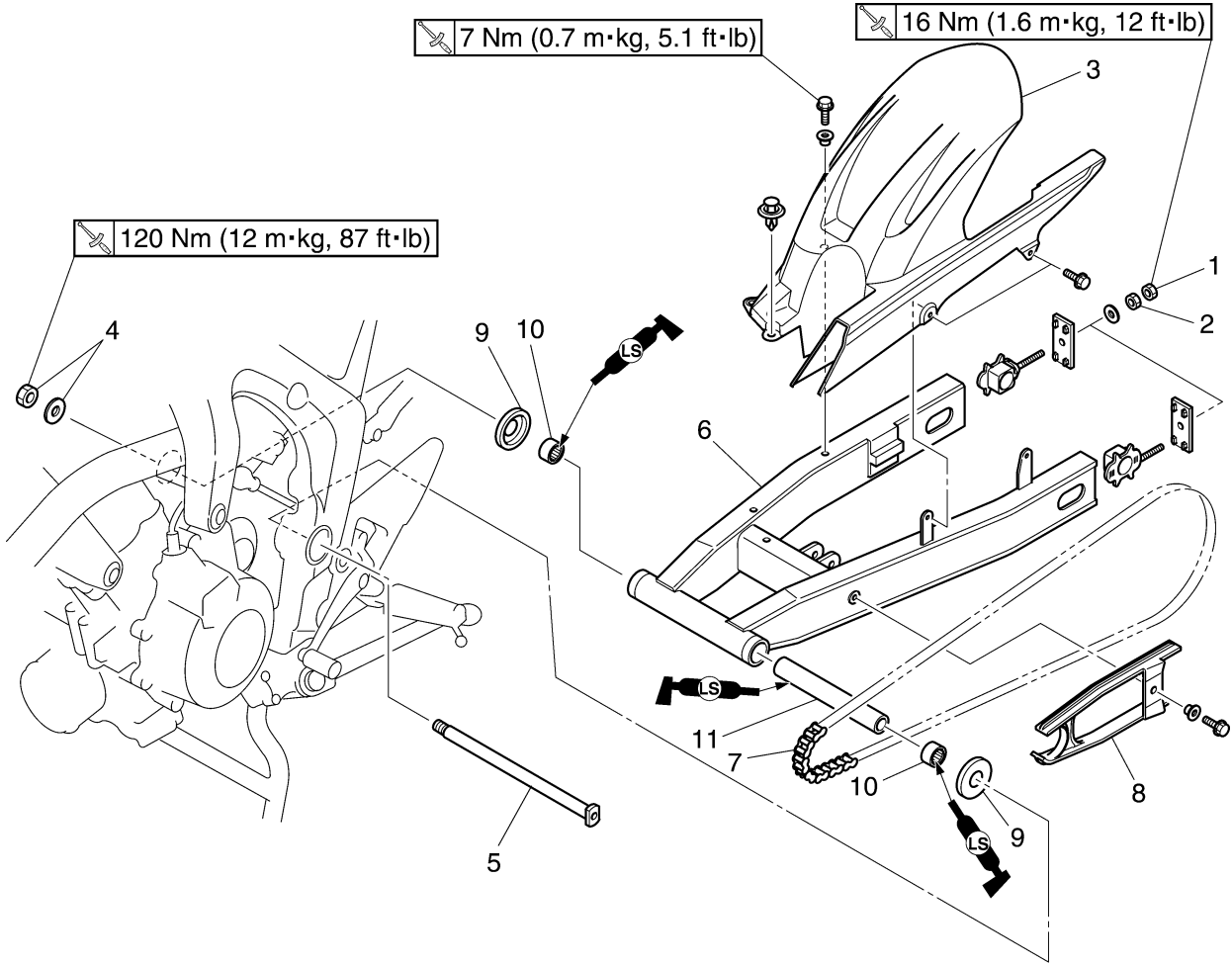
Removing the swingarm



Order	Job/Parts to remove	Q'ty	Remarks
	Muffler assembly		Refer to "ENGINE REMOVAL" on page 5-1.
	Catalyst assembly		Refer to "ENGINE REMOVAL" on page 5-1.
	Exhaust pipe assembly		Refer to "ENGINE REMOVAL" on page 5-1.
	Rear brake caliper		Refer to "REAR BRAKE" on page 4-27.
	Rear wheel		Refer to "REAR WHEEL" on page 4-10.
	Rear shock absorber assembly		Refer to "REAR SHOCK ABSORBER ASSEMBLY" on page 4-55.
	Drive sprocket cover		Refer to "ENGINE REMOVAL" on page 5-1.
1	Locknut	2	Loosen.
2	Adjusting nut	2	Loosen.
3	Rear fender	1	
4	Pivot shaft nut/washer	1/1	
5	Pivot shaft	1	
6	Swingarm	1	
7	Drive chain	1	
8	Drive chain guide	1	
9	Dust cover	2	
10	Bearing	2	
11	Spacer	1	

SWINGARM

Removing the swingarm



Order	Job/Parts to remove	Q'ty	Remarks
			For installation, reverse the removal procedure.