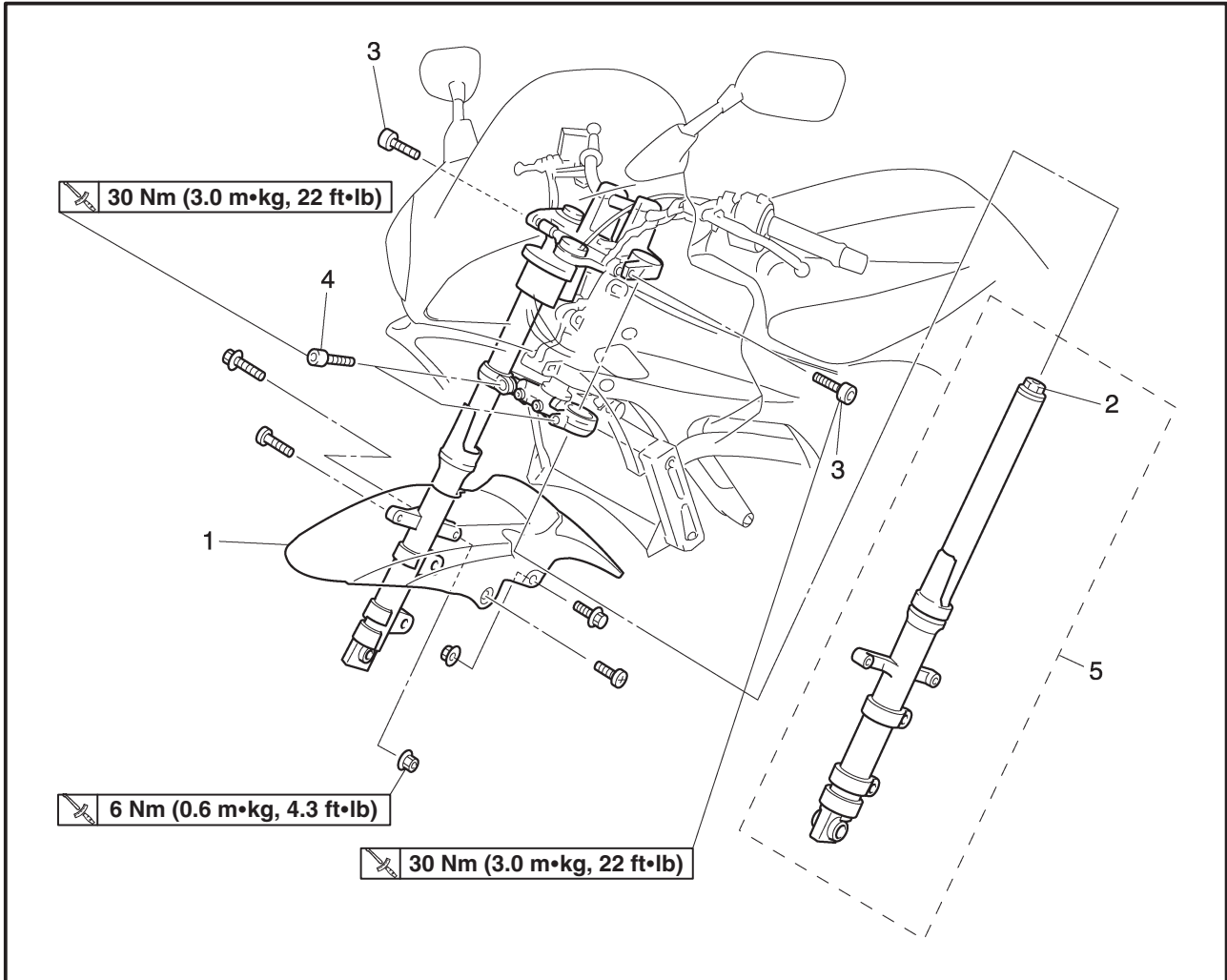


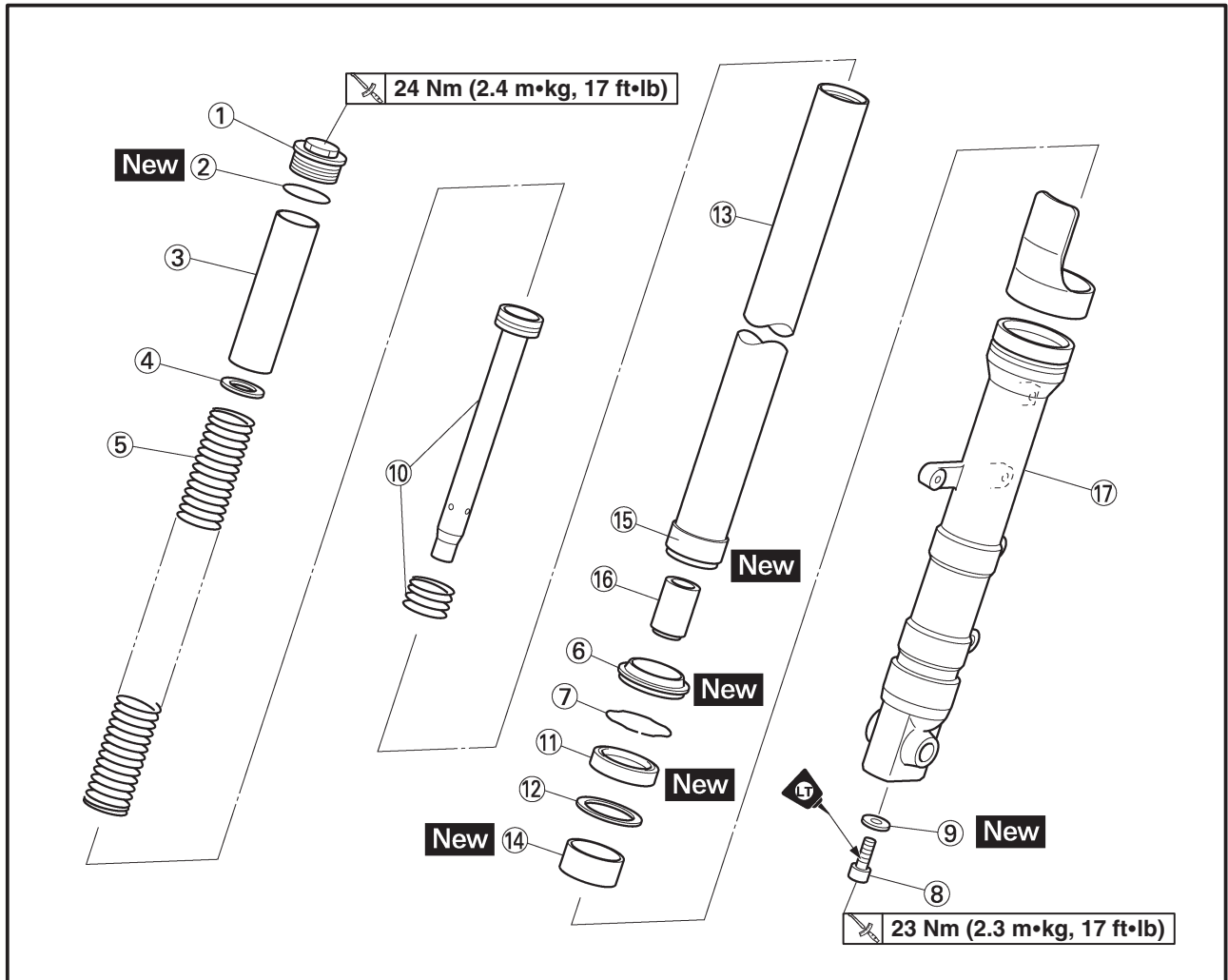
EAS00647

FRONT FORK
FRONT FORK LEGS

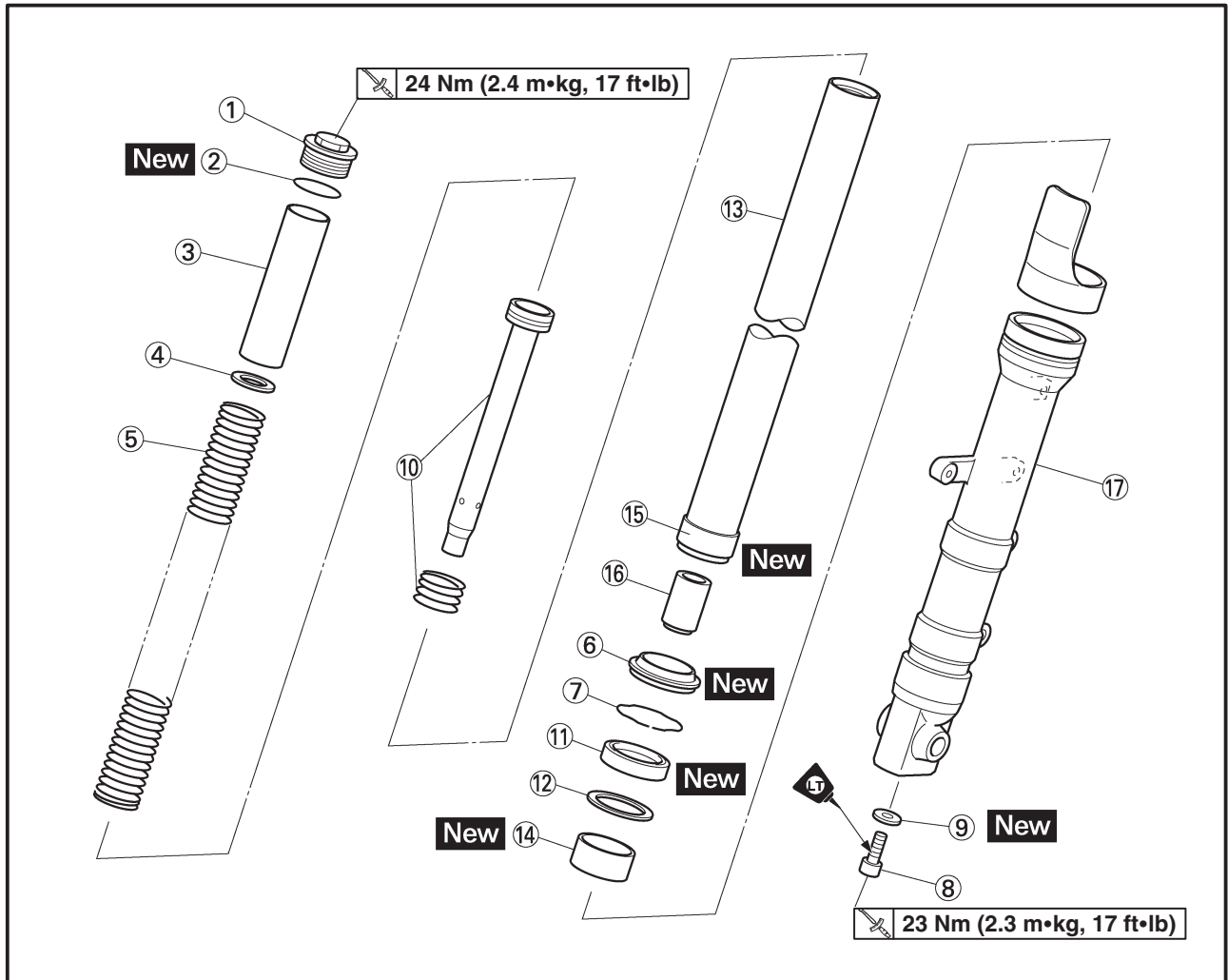


Order	Job/Part	Q'ty	Remarks
	Removing the front fork legs		Remove the parts in the order listed.
	Front wheel		Refer to "FRONT WHEEL AND BRAKE DISCS".
	Front brake calipers		Refer to "FRONT AND REAR BRAKES".
1	Front fender	1	
2	Cap bolt	1	Loosen.
3	Upper bracket pinch bolt	1	Loosen.
4	Under bracket pinch bolt	1	Loosen.
5	Front fork leg	1	
			For installation, reverse the removal procedure.

EAS00648



Order	Job/Part	Q'ty	Remarks
	Disassembling the front fork legs		Disassemble the parts in the order listed. NOTE: _____ The following the procedure applies to both of the front fork legs.
①	Cap bolt	1	
②	O-ring	1	
③	Spacer	1	
④	Washer	1	
⑤	Front fork spring	1	
⑥	Dust seal	1	
⑦	Oil seal clip	1	
⑧	Damper rod assembly bolt	1	
⑨	Copper washer	1	
⑩	Damper rod assembly	1	
⑪	Oil seal	1	
⑫	Washer	1	



Order	Job/Part	Q'ty	Remarks
⑬	Inner tube	1	For assembly, reverse the disassembly procedure.
⑭	Outer tube bushing	1	
⑮	Inner tube bushing	1	
⑯	Oil flow stopper	1	
⑰	Outer tube	1	



EAS00649

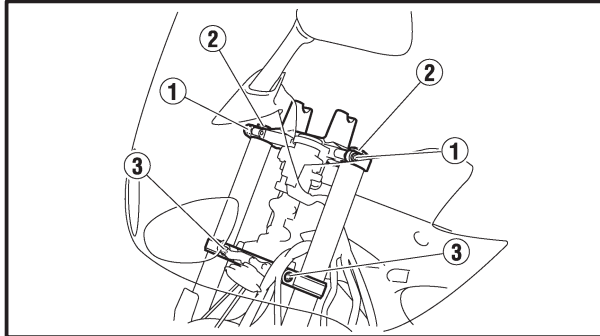
REMOVING THE FRONT FORK LEGS

The following procedure applies to both of the front fork legs.

1. Stand the motorcycle on a level surface.

⚠ WARNING

Securely support the motorcycle so that there is no danger of it falling over.



Place the motorcycle on a suitable stand so that the front wheel is elevated.

2. Loosen:

- upper bracket pinch bolt (1)
- cap bolt (2)
- under bracket pinch bolt (3)

⚠ WARNING

Before loosening the upper and under bracket pinch bolts, support the front fork leg.

3. Remove:

- front fork leg

EAS00652

DISASSEMBLING THE FRONT FORK LEGS

The following procedure applies to both of the front fork legs.

1. Remove:

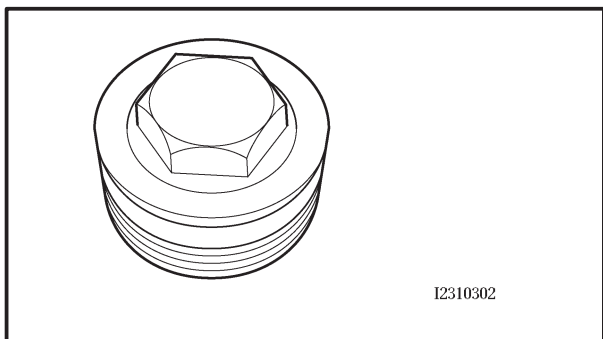
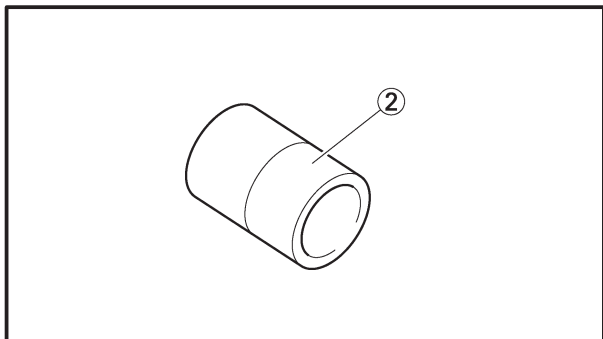
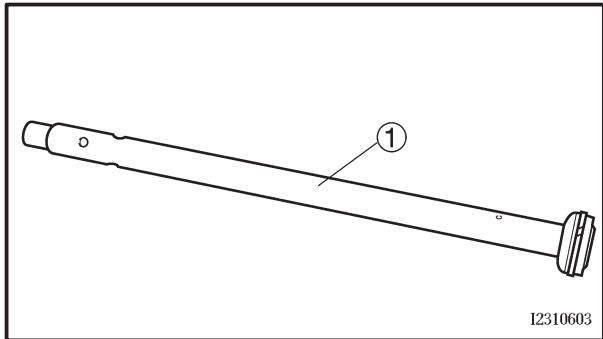
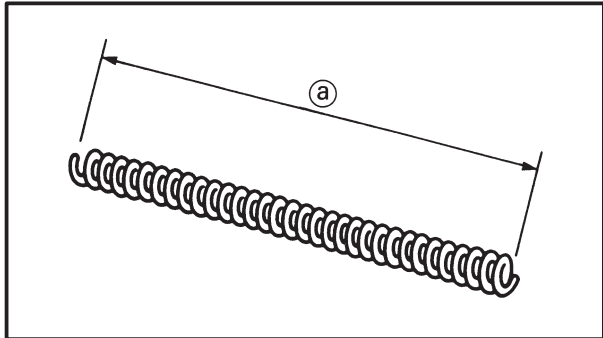
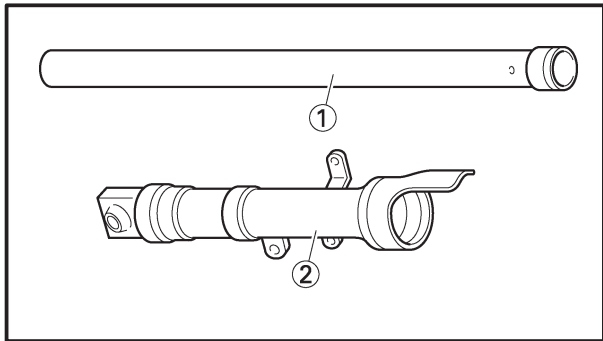
- cap bolt
- washer
- spacer
- fork spring

2. Drain:

- fork oil

NOTE:

Stroke the inner tube several times while draining the fork oil.



EAS00657

CHECKING THE FRONT FORK LEGS

The following procedure applies to both of the front fork legs.

1. Check:

- inner tube ①
- outer tube ②

Bends/damage/scratches → Replace.


⚠ WARNING

Do not attempt to straighten a bent inner tube as this may dangerously weaken it.

2. Measure:

- spring free length ①

Out of specification → Replace.

	Spring free length
	354 mm (13.94 in)
	<Limit> : 347 mm (13.66 in)

3. Check:

- damper rod ①

Damage/wear → Replace.

Obstruction → Blow out all of the oil passages with compressed air.

- oil flow stopper ②

Damage → Replace.

CAUTION:

• **The front fork leg has a built-in damper adjusting rod and a very sophisticated internal construction, which are particularly sensitive to foreign material.**

• **When disassembling and assembling the front fork leg, do not allow any foreign material to enter the front fork.**

4. Check:

- cap bolt O-ring

Damage/wear → Replace.



EAS00659

ASSEMBLING THE FRONT FORK LEGS

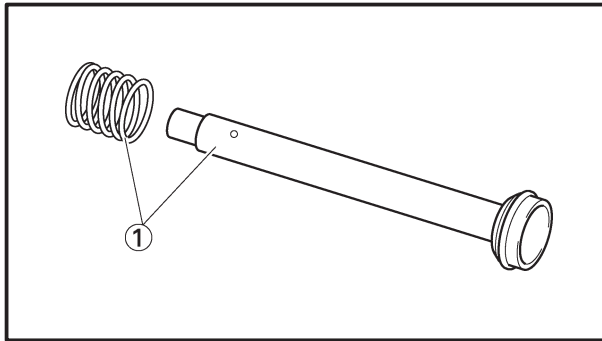
The following procedure applies to both of the front fork legs.

⚠ WARNING

- Make sure the oil levels in both front fork legs are equal.
- Uneven oil levels can result in poor handling and a loss of stability.

NOTE:

- When assembling the front fork leg, be sure to replace the following parts:
 - inner tube bushing
 - outer tube bushing
 - oil seal
 - dust seal
- before assembling the front fork leg, make sure all of the components are clean.



1. Install:
 - inner tube bushing
 - outer tube bushing
 - oil flow stopper
 - damper rod assembly (1)
 - copper washer **New**

⚠ WARNING

Always use new copper washer.

CAUTION:

Allow the damper rod assembly to slide slowly down the inner tube until it protrudes from the bottom of the inner tube. Be careful not to damage the inner tube.

2. Lubricate:
 - inner tube's outer surface

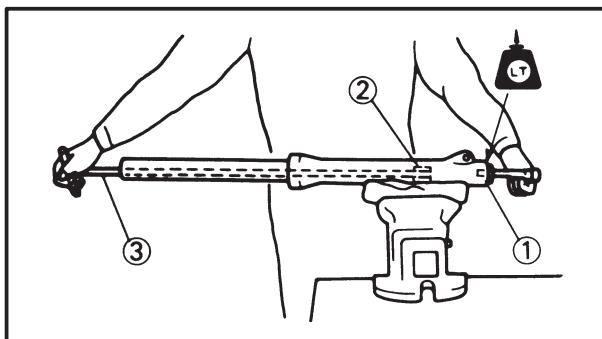


3. Tighten:
 - damper rod assembly bolt (1)

23 Nm (2.3 m•kg, 17 ft•lb)
LOCTITE®

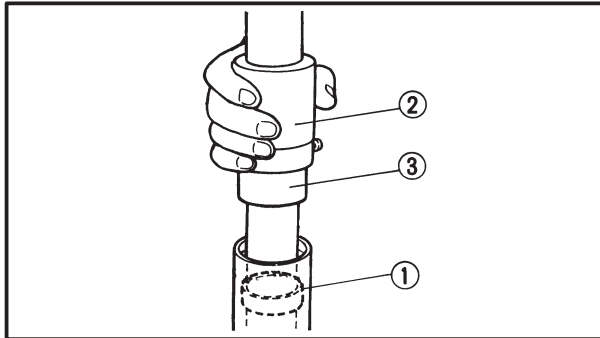
NOTE:

While holding the damper rod assembly with the damper rod holder (2) and T-handle (3), tighten the damper rod assembly bolt.





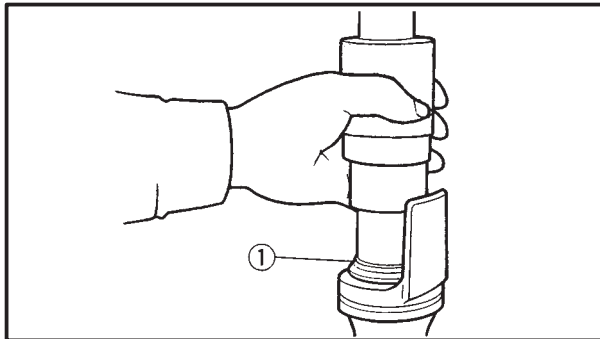
Damper rod holder
90890-01294
T-handle
90890-01326



4. Install:
- outer tube bushing ①
(with the fork seal driver weight ② and fork seal driver attachment ③)



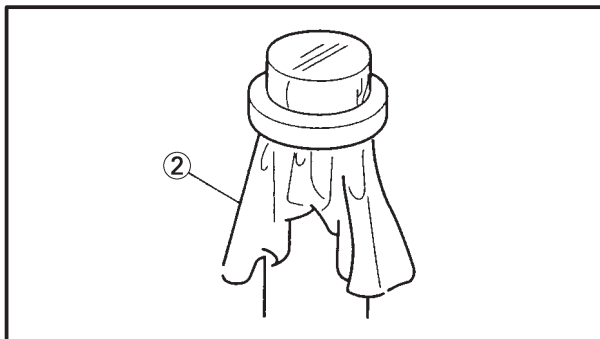
Fork seal driver weight
90890-01367
Fork seal driver attachment
90890-01374



5. Install:
- washer
 - oil seal ①
(with the fork seal driver weight and fork seal driver attachment)

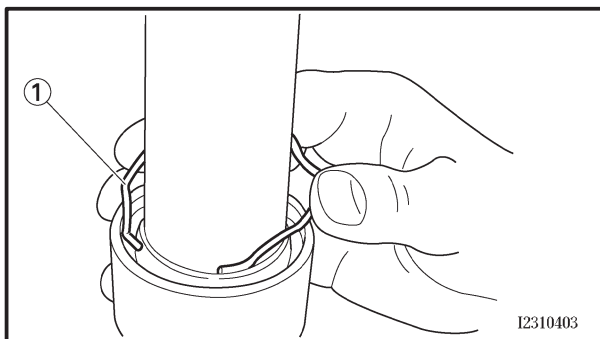
CAUTION: _____

Make sure the numbered side of the oil seal faces up.



NOTE: _____

- Before installing the oil seal, lubricate its lips with lithium-soap-based grease.
 - Lubricate the outer surface of the inner tube with fork oil.
 - Before installing the oil seal, cover the top of the front fork leg with a plastic bag ② to protect the oil seal during installation.
- _____

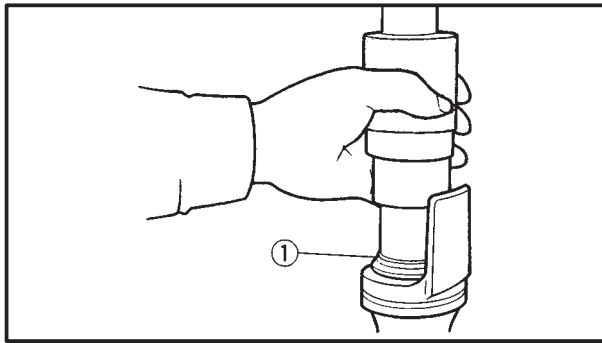


6. Install:
- oil seal clip ①

NOTE: _____

Adjust the oil seal clip so that it fits into the outer tube's groove.

12310403



7. Install:
- dust seal ①
(with the fork seal driver weight)



Fork seal driver weight
90890-01367

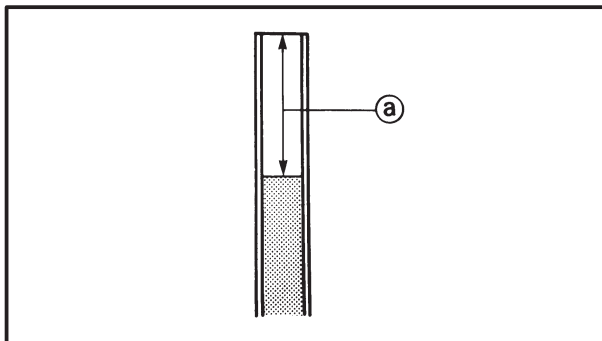
8. Fill:
- front fork leg
(with the specified amount of the recommended fork oil)



Quantity (each front fork leg)
0.467 L (0.41 Imp qt, 0.49 US qt)
Recommended oil
Suspension oil "01" or equivalent

CAUTION:

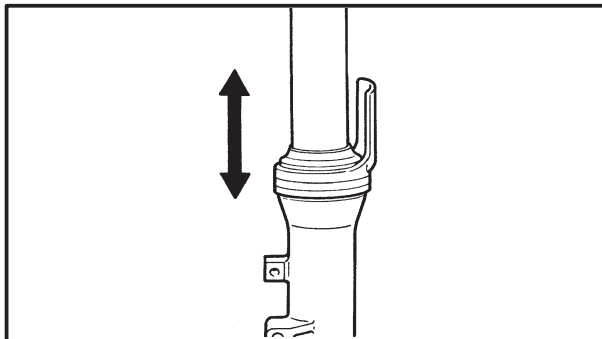
- Be sure to use the recommended fork oil. Other oils may have an adverse effect on front fork performance.
- When disassembling and assembling the front fork leg, do not allow any foreign material to enter the front fork.



9. Measure:
- front fork leg oil level ①
Out of specification → Correct.

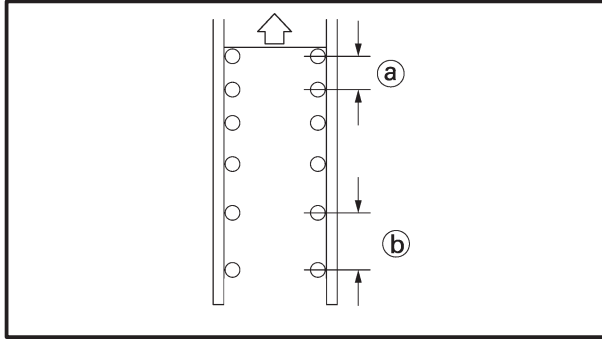
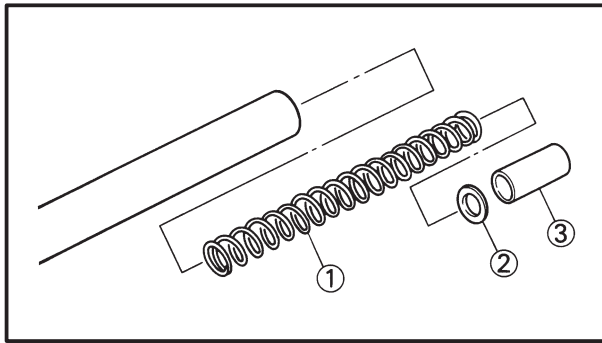


Front fork leg oil level (from the top of the inner tube, with the inner tube fully compressed and without the fork spring)
134 mm (5.28 in)



NOTE:

- While filling the front fork leg, keep it upright.
- After filling, slowly pump the front fork leg up and down to distribute the fork oil.



10. Install:
- spring ①
 - spring seat ②
 - spacer ③
 - cap bolt

NOTE:

- Install the spring with the smaller pitch (a) facing up.
- Before installing the cap bolt, lubricate its O-ring with grease.

② Larger pitch

EAS00662

INSTALLING THE FRONT FORK LEGS

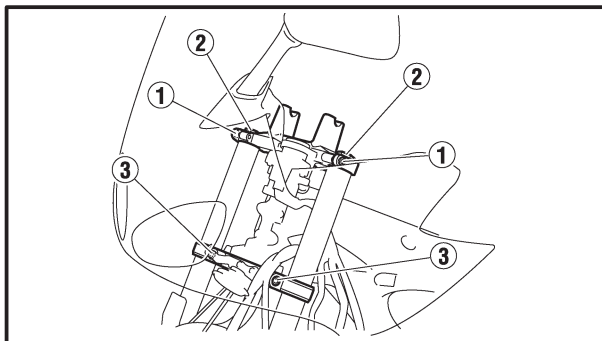
The following procedure applies to both of the front fork legs.

1. Install:

- front fork leg
- Temporarily tighten the upper and under bracket pinch bolts.


NOTE:

Make sure the inner fork tube is flush with the top of the upper bracket.




2. Tighten:


- under bracket pinch bolt ①

 **30 Nm (3.0 m•kg, 22 ft•lb)**

- cap bolt ②

 **24 Nm (2.4 m•kg, 17 ft•lb)**

- upper bracket pinch bolt ③

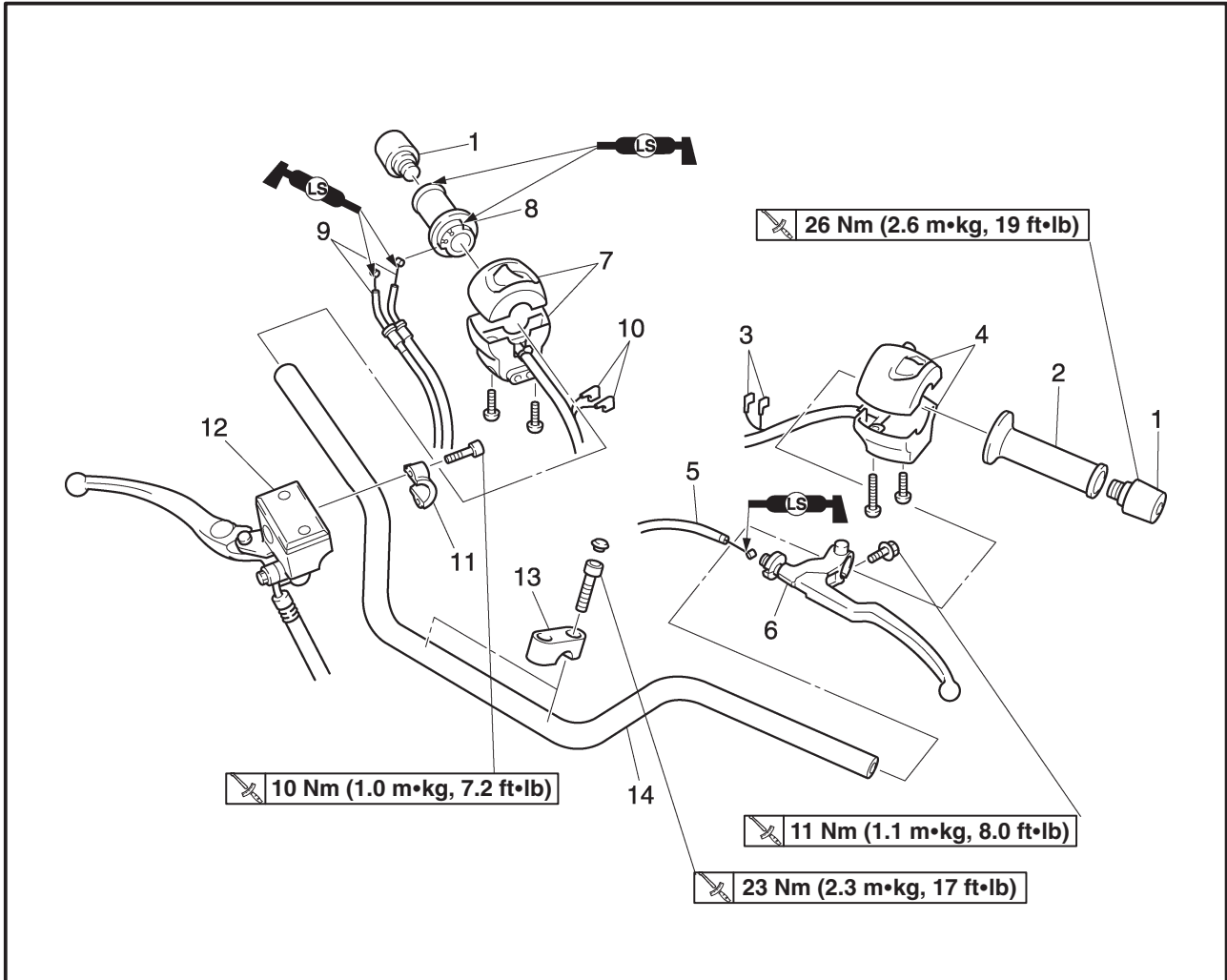
 **30 Nm (3.0 m•kg, 22 ft•lb)**

⚠ WARNING

Make sure the brake hoses are routed properly.

EAS00664

HANDLEBAR



Order	Job/Part	Q'ty	Remarks
	Removing the handlebar		Remove the parts in the order listed.
1	Grip end	2	
2	Handlebar grip (left)	1	
3	Clutch switch connector	1	Disconnect.
4	Left handlebar switch	1	
5	Clutch cable	1	
6	Clutch lever	1	
7	Right handlebar switch	1	
8	Throttle grip	1	
9	Throttle cable	2	
10	Front brake light switch connector	1	Disconnect.
11	Front brake master cylinder holder	1	
12	Front brake master cylinder	1	
13	Upper handlebar holder	2	
14	Handlebar	1	For installation, reverse the removal procedure.



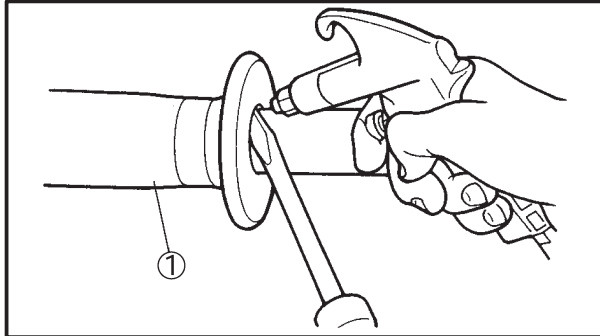
EAS00666

REMOVING THE HANDLEBAR

1. Stand the motorcycle on a level surface.

⚠ WARNING

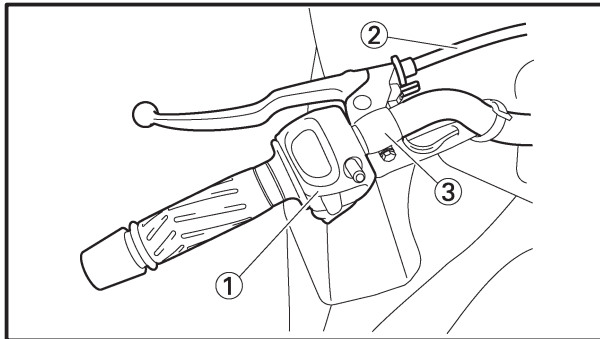
Securely support the motorcycle so that there is no danger of it falling over.



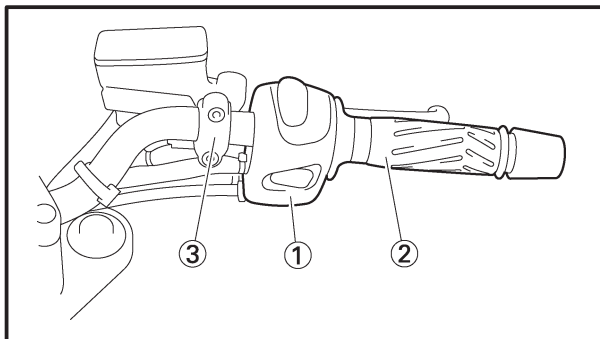
2. Remove:
- grip end
 - handlebar grip ①

NOTE:

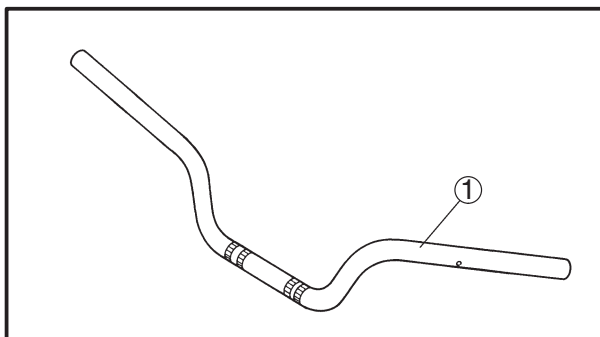
Blow compressed air between the handlebar and the handlebar grip, and gradually push the grip off the handlebar.



3. Disconnect:
- clutch switch connector
4. Remove:
- left handlebar switch ①
 - clutch cable ②
 - clutch lever holder ③



5. Remove:
- grip end
 - front brake light switch connector
 - right handlebar switch ①
 - throttle grip ②
 - front brake master cylinder holder ③
 - front brake master cylinder



EAS00668

CHECKING THE HANDLEBAR

1. Check:
- handlebar ①
- Bends/cracks/damage → Replace.

⚠ WARNING

Do not attempt to straighten a bent handlebar as this may dangerously weaken it.