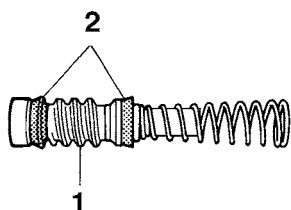


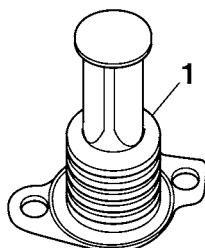
# REAR BRAKE

To the brake master cylinder "5"



## 3. Check:

- Brake master cylinder cap
- Brake master cylinder reservoir diaphragm holder
- Brake master cylinder reservoir diaphragm "1"  
Cracks/damage → Replace.



## 4. Check:

- Brake hoses  
Cracks/damage/wear → Replace.

EAS22730

## ASSEMBLING THE REAR BRAKE MASTER CYLINDER

EWA13520

### ⚠ WARNING

- Before installation, all internal brake components should be cleaned and lubricated with clean or new brake fluid.
- Never use solvents on internal brake components.



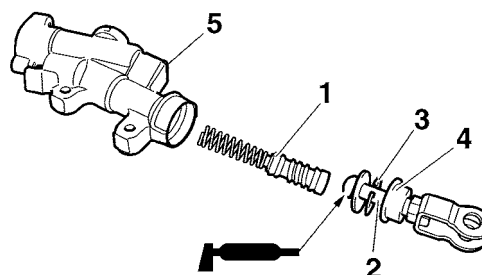
Recommended fluid  
DOT 4

EAS22750

## INSTALLING THE REAR BRAKE MASTER CYLINDER

### 1. Install:

- Brake master cylinder kit "1"
- Adjusting rod "2"
- Circlip "3" **New**
- Dust boots "4"

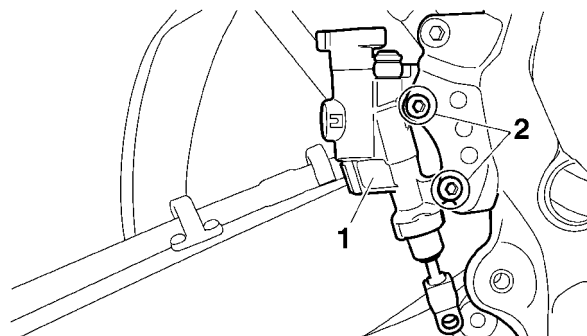


### 2. Install:

- Rear brake master cylinder "1"
- Brake master cylinder bolt "2"



**Brake master cylinder bolt**  
**13 Nm (1.3 m•kg, 9.4 ft•lb)**



### 3. Install:

- Copper washers **New**
- Brake hoses
- Union bolt



**Brake hose union bolt**  
**30 Nm (3.0 m•kg, 22 ft•lb)**

EWA13530

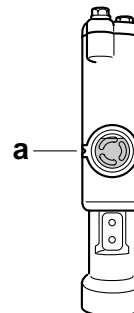
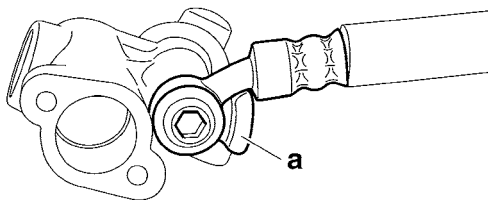
### ⚠ WARNING

Proper brake hose routing is essential to insure safe vehicle operation. Refer to "CABLE ROUTING" on page 2-25.

ECA14160

### CAUTION:

When installing the brake hose onto the brake master cylinder, make sure the brake pipe touches the projection "a" as shown.



4. Fill:

- Brake fluid reservoir  
(to the maximum level mark)



EWA13090

**WARNING**

- Use only the designated brake fluid. Other brake fluids may cause the rubber seals to deteriorate, causing leakage and poor brake performance.
- Refill with the same type of brake fluid that is already in the system. Mixing brake fluids may result in a harmful chemical reaction, leading to poor brake performance.
- When refilling, be careful that water does not enter the brake fluid reservoir. Water will significantly lower the boiling point of the brake fluid and could cause vapor lock.

ECA13540

**CAUTION:**

Brake fluid may damage painted surfaces and plastic parts. Therefore, always clean up any spilt brake fluid immediately.

5. Bleed:

- Brake system  
Refer to "BLEEDING THE HYDRAULIC BRAKE SYSTEM" on page 3-18.

6. Check:

- Brake fluid level  
Below the minimum level mark "a" → Add the recommended brake fluid to the proper level.  
Refer to "CHECKING THE BRAKE FLUID LEVEL" on page 3-16.

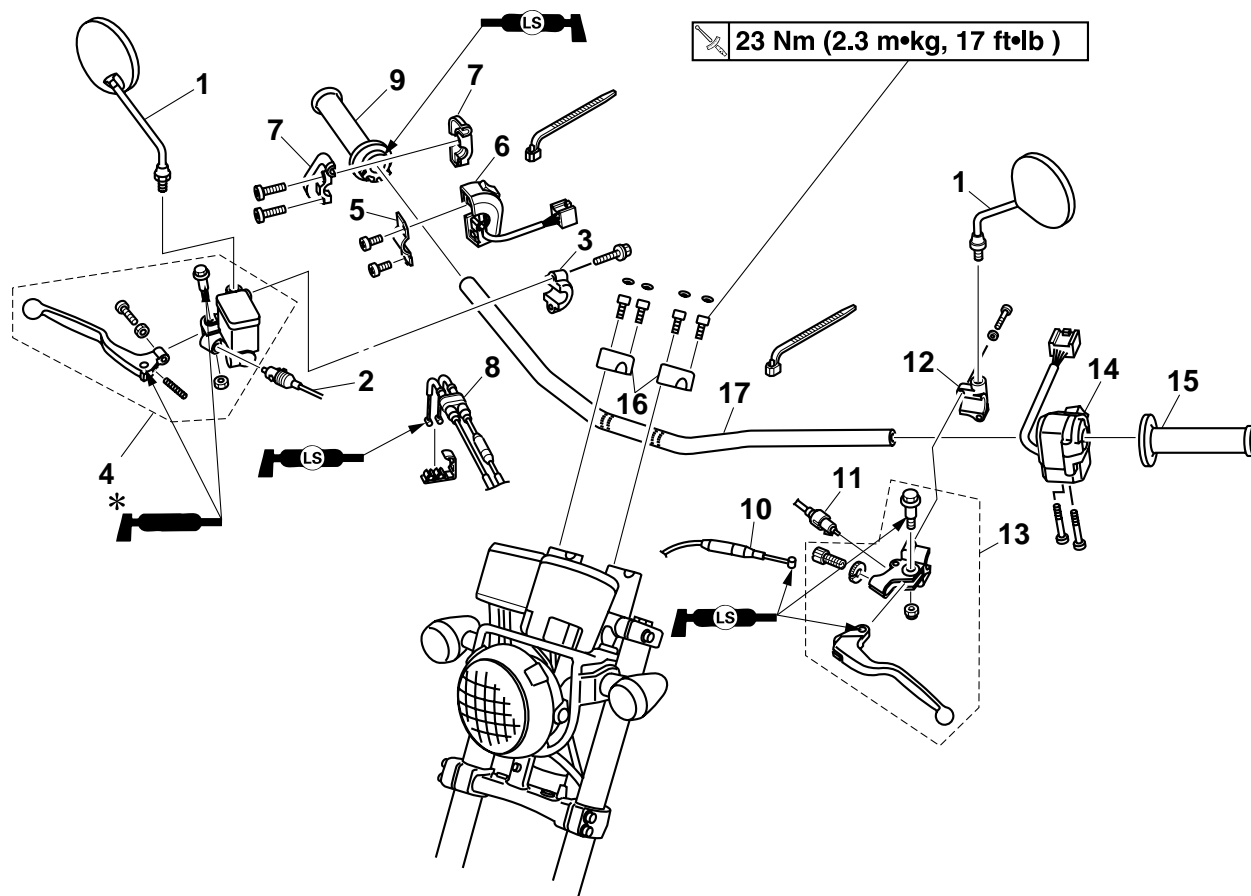
7. Check:

- Brake lever operation  
Soft or spongy feeling → Bleed the brake system.  
Refer to "BLEEDING THE HYDRAULIC BRAKE SYSTEM" on page 3-18.

EAS22840

## HANDLEBAR

### Removing the handlebar



Order	Job/Parts to remove	Q'ty	Remarks
1	Back view mirror (left/right)	1/1	
2	Front brake light switch	1	
3	Front brake master cylinder holder	1	
4	Master cylinder assembly	1	
5	Holder	1	
6	Right handlebar switch	1	
7	Throttle cable housing	1	
8	Throttle cable	1	
9	Throttle grip	1	
10	Clutch cable	1	
11	Clutch switch	1	
12	Bracket	1	
13	Clutch lever holder	1	
14	Left handlebar switch	1	
15	Handlebar grip	1	
16	Handlebar upper holder	2	
17	Handlebar	1	
			For installation, reverse the removal procedure.

\*Apply silicone grease

EAS22860

## REMOVING THE HANDLEBAR

1. Stand the vehicle on a level surface.

EWA13120

### **WARNING**

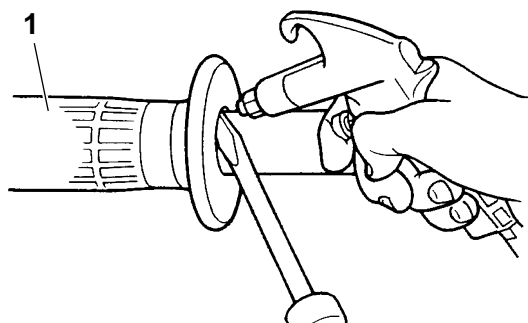
Securely support the vehicle so that there is no danger of it falling over.

2. Remove:

- Handlebar grip "1"

### NOTE:

Blow compressed air between the left handlebar and the handlebar grip, and gradually push the grip off the handlebar.



EAS22880

## CHECKING THE HANDLEBAR

1. Check:

- Handlebar  
Bends/cracks/damage → Replace.

EWA13690

### **WARNING**

Do not attempt to straighten a bent handlebar as this may dangerously weaken it.

EAS22910

## INSTALLING THE HANDLEBAR

1. Stand the vehicle on a level surface.

EWA13120

### **WARNING**

Securely support the vehicle so that there is no danger of it falling over.

2. Install:

- Handlebar "1"
- Handlebar upper holders "2"



Handlebar upper holder bolt  
23 Nm (2.3 m•kg, 17 ft•lb)

ECA14250

### CAUTION:

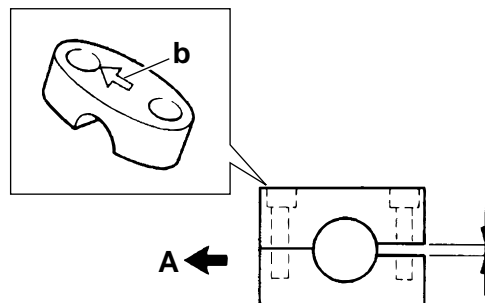
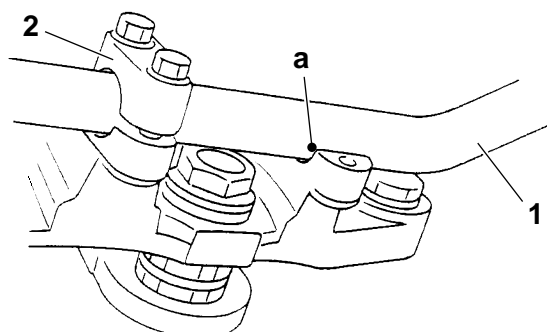
- First, tighten the bolts on the front side of the handlebar holder, and then on the rear

side.

- Turn the handlebar all the way to the left and right. If there is any contact with the fuel tank, adjust the handlebar position.

### NOTE:

- Align the match mark "a" on the handlebar with the upper surface of the lower handlebar holders.
- The upper handlebar holders should be installed with the arrow marks "b" facing forward "A".

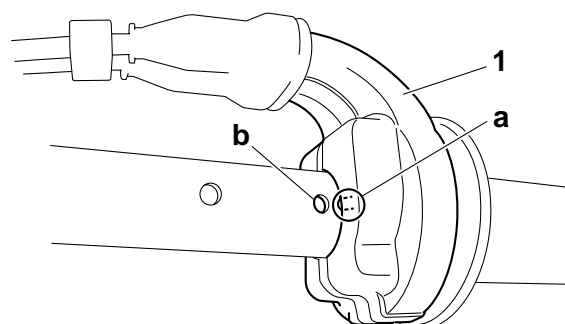


3. Install:

- Throttle grip
- Throttle cable housing "1"
- Throttle cable

### NOTE:

Align the projection "a" on the throttle cable housing with the hole "b" in the handlebar.

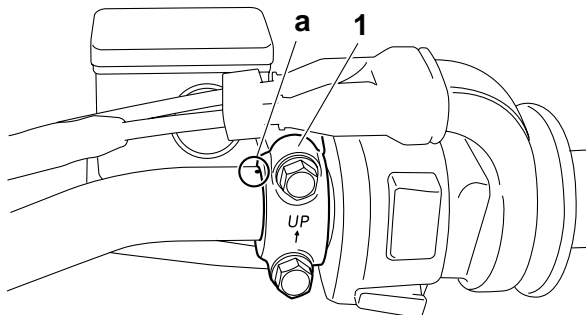


## 4. Install:

- Right handlebar switch
- Front brake master cylinder
- Front brake master cylinder bracket "1"

### NOTE:

Align the groove on the master cylinder bracket with the punch mark "a" in the handlebar.



## 5. Install:

- Handlebar grip

- Apply a thin coat of rubber adhesive onto the left end of the handlebar.
- Slide the handlebar grip over the left end of the handlebar.
- Wipe off any excess rubber adhesive with a clean rag.

EWA13700

### WARNING

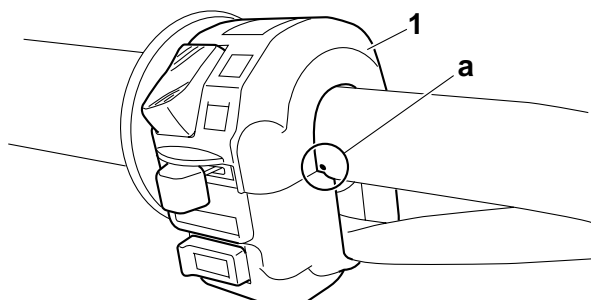
Do not touch the handlebar grip until the rubber adhesive has fully dried.

## 6. Install:

- Left handlebar switch "1"

### NOTE:

Align the groove on the handlebar switch with the punch mark "a" in the handlebar.

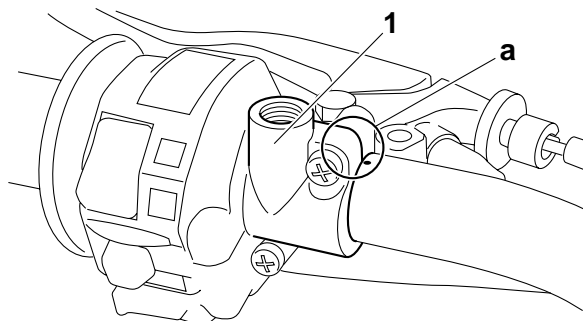


## 7. Install:

- Clutch lever holder "1"
- Clutch cable

### NOTE:

Align the groove on the clutch lever holder with the punch mark "a" in the handlebar.



## 8. Connect:

- Clutch switch coupler

### NOTE:

Lubricate the end of the clutch cable with a thin coat of lithium-soap-based grease.

## 9. Adjust:

- Clutch cable free play

Refer to "ADJUSTING THE CLUTCH CABLE FREE PLAY" on page 3-12.



**Clutch lever free play**  
10.0–15.0 mm (0.39–0.59 in)

## 10. Adjust:

- Throttle cable free play

Refer to "ADJUSTING THE THROTTLE CABLE FREE PLAY" on page 3-7.

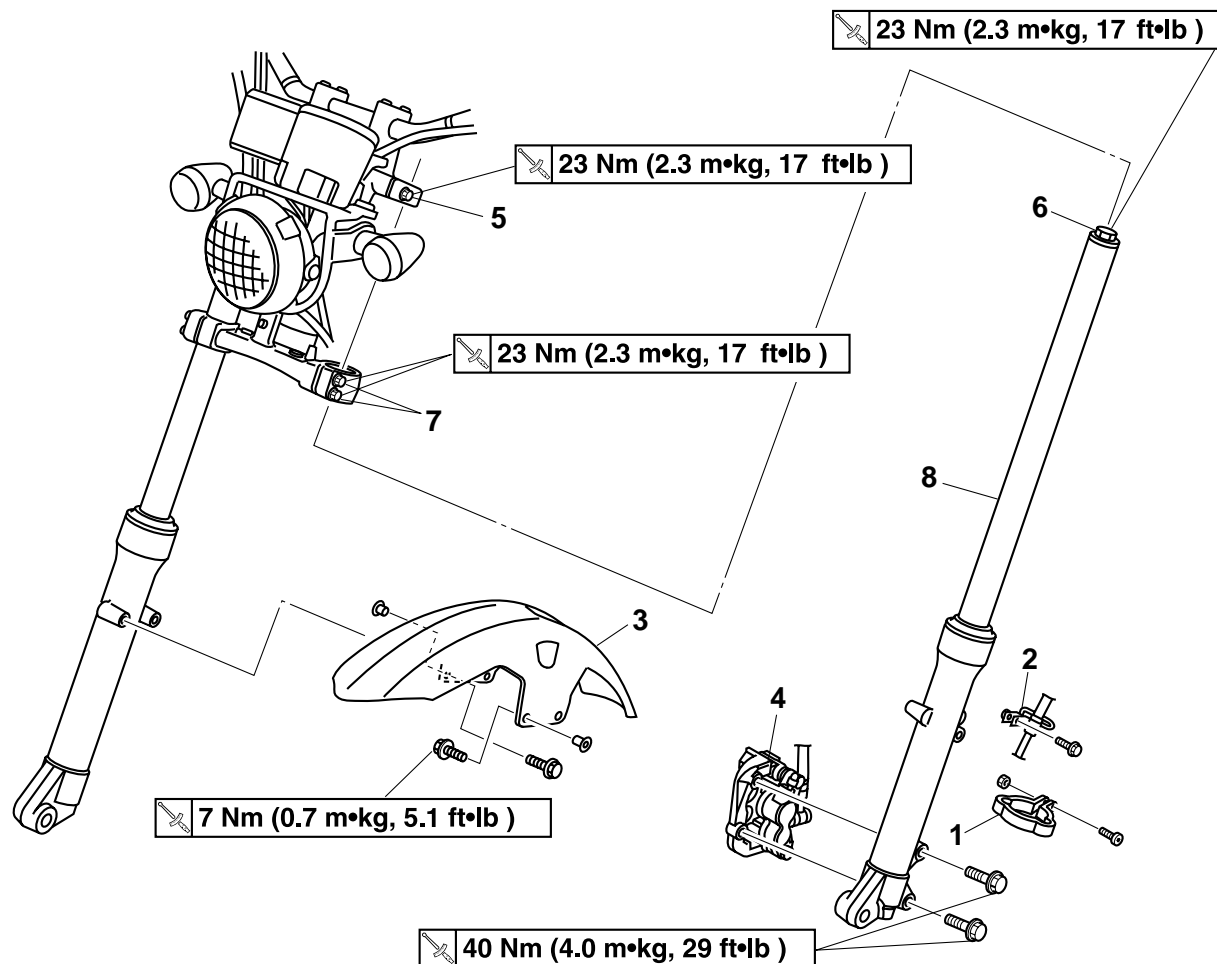


**Throttle cable free play**  
3.0–5.0 mm (0.12–0.20 in)

EAS22950

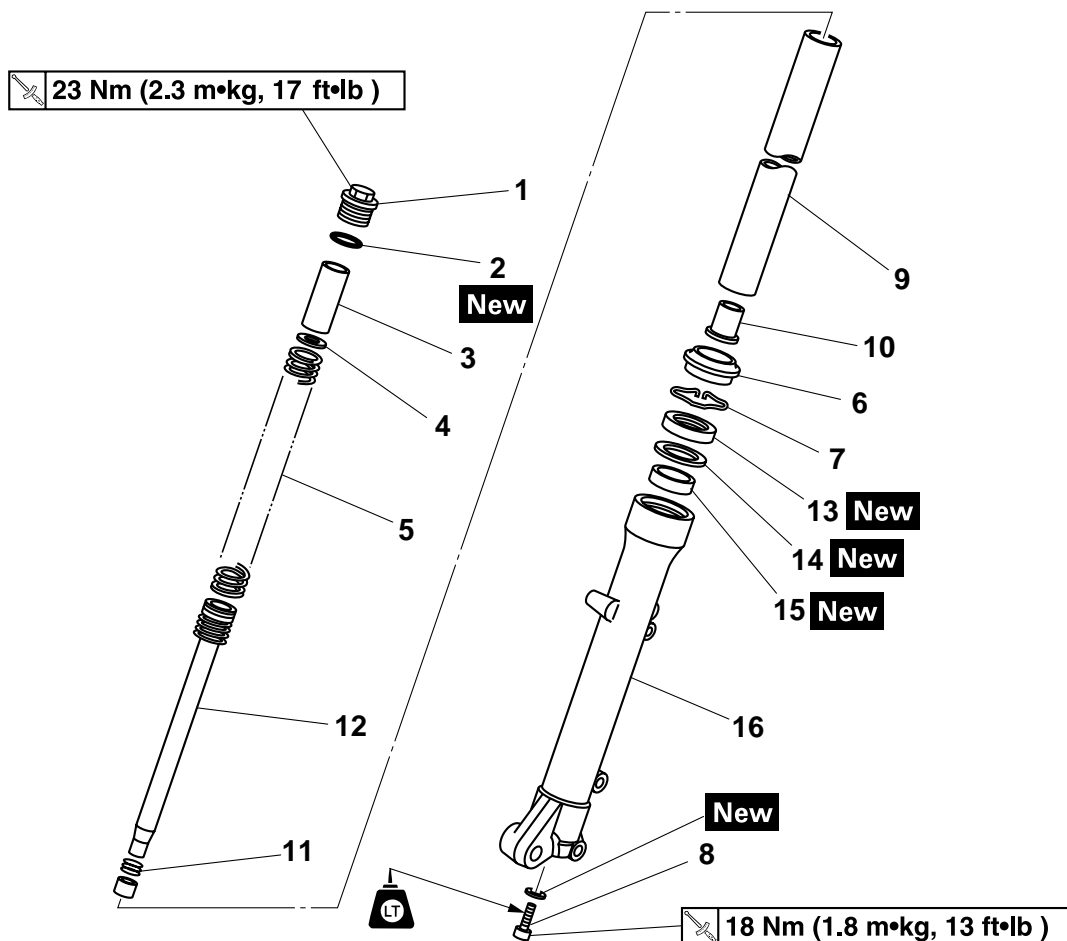
## FRONT FORK

### Removing the front fork legs



Order	Job/Parts to remove	Q'ty	Remarks
	Front wheel		Refer to "FRONT WHEEL" on page 4-2.
1	Brake hose holder	1	
2	Cable holder	1	
3	Front fender	1	
4	Front brake caliper	1	
5	Upper bracket pinch bolt	4	Loosen.
6	Cap bolt	2	Loosen.
7	Pinch bolt	4	Loosen.
8	Front fork	2	
			For installation, reverse the removal procedure.

## Disassembling the front fork legs



Order	Job/Parts to remove	Q'ty	Remarks
1	Cap bolt	1	
2	O-ring	1	
3	Spacer	1	
4	Fork spring seat	1	
5	Fork spring	1	
6	Dust seal	1	
7	Oil seal clip	1	
8	Damper rod bolt	1	
9	Inner tube	1	
10	Oil lock piece	1	
11	Rebound spring	1	
12	Damper rod	1	
13	Oil seal	1	
14	Outer tube bushing	1	
15	Inner tube bushing	1	
16	Outer tube	1	
			For assembly, reverse the disassembly procedure.

EAS22960

## REMOVING THE FRONT FORK LEGS

The following procedure applies to both of the front fork legs.

1. Stand the vehicle on a level surface.

EWA13120

### **WARNING**

**Securely support the vehicle so that there is no danger of it falling over.**

### **NOTE:**

Place the vehicle on a suitable stand so that the front wheel is elevated.

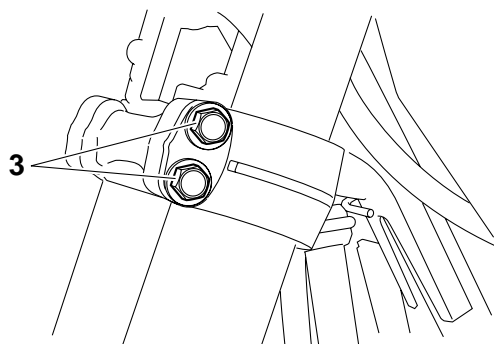
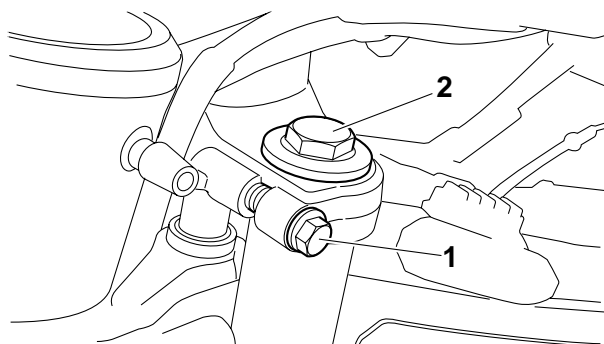
2. Loosen:

- Upper bracket pinch bolt "1"
- Cap bolt "2"
- Lower bracket pinch bolt "3"

EWA13640

### **WARNING**

**Before loosening the upper and lower bracket pinch bolts, support the front fork leg.**



3. Remove:

- Front fork leg

EAS22990

## DISASSEMBLING THE FRONT FORK LEGS

The following procedure applies to both of the front fork legs.

1. Remove:

- Fork spring seat
- Fork spring

2. Drain:

- Fork oil

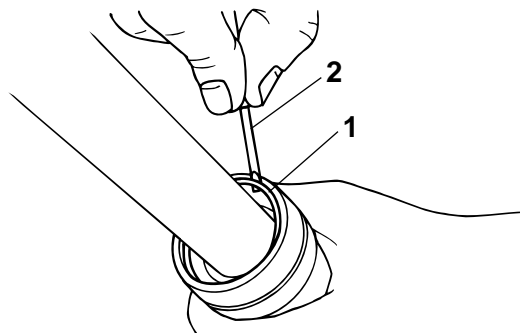
3. Remove:

- Dust seals
  - Oil seal clip "1"
- (with a flat-head screwdriver "2")

ECA14180

### **CAUTION:**

**Do not scratch the inner tube.**

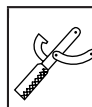


4. Remove:

- Damper rod bolt "1"
- Damper rod

### **NOTE:**

While holding the damper rod with the damper rod holder "2" and T-handle "3", loosen the damper rod bolt.



**Damper rod holder**

**90890-01294**

**Damping rod holder set**

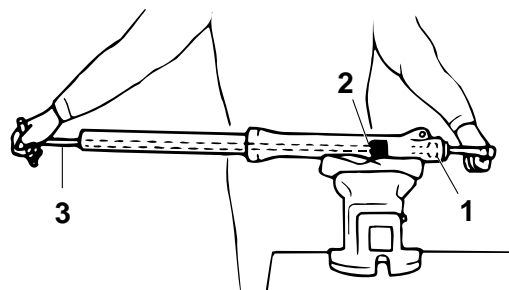
**YM-01300**

**T-handle**

**90890-01326**

**T-handle 3/8" drive 60 cm long**

**YM-01326**



5. Remove:

- Inner tube "1"



- a. Hold the front fork leg horizontally.
- b. Securely clamp the brake caliper bracket in a



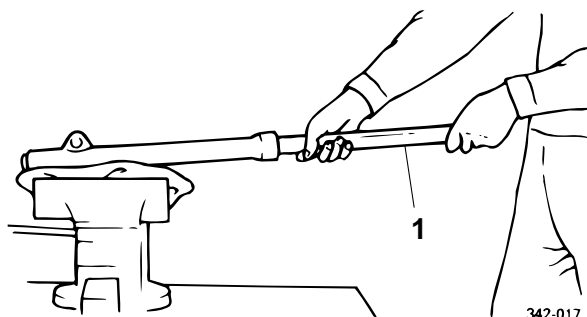
vise with soft jaws.

- c. Separate the inner tube from the outer tube by pulling the inner tube forcefully but carefully.

ECA14190

## CAUTION:

- Excessive force will damage the oil seal and bushing. A damaged oil seal or bushing must be replaced.
- Avoid bottoming the inner tube into the outer tube during the above procedure, as the oil flow stopper will be damaged.



342-017



EAS23010

## CHECKING THE FRONT FORK LEGS

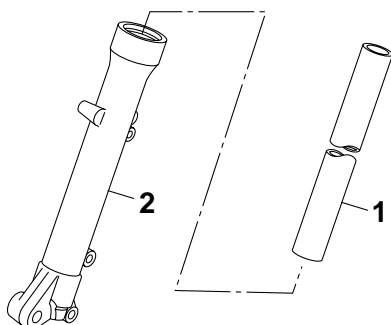
The following procedure applies to both of the front fork legs.

1. Check:
  - Inner tube "1"
  - Outer tube "2"
 Bends/damage/scratches → Replace.

EWA13650

## WARNING

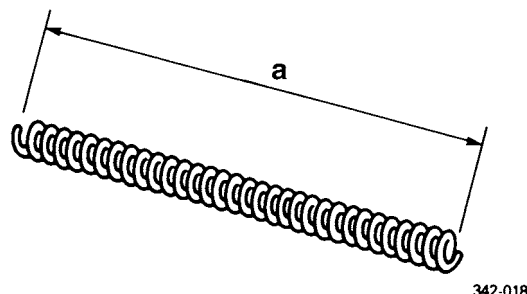
Do not attempt to straighten a bent inner tube as this may dangerously weaken it.



2. Measure:
  - Spring free length "a"
 Out of specification → Replace.



Fork spring free length  
478.0 mm (18.82 in)  
Limit  
468.4 mm (18.44 in)



342-018

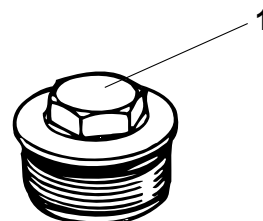
3. Check:
  - Damper rod  
Damage/wear → Replace.  
Obstruction → Blow out all of the oil passages with compressed air.
  - Oil lock piece  
Damage → Replace.

ECA14200

## CAUTION:

- The front fork leg has a built-in damper adjusting rod and a very sophisticated internal construction, which are particularly sensitive to foreign material.
- When disassembling and assembling the front fork leg, do not allow any foreign material to enter the front fork.

4. Check:
  - Cap bolt "1"
 Damage/wear → Replace.



EAS23020

## ASSEMBLING THE FRONT FORK LEGS

The following procedure applies to both of the front fork legs.

EWA13660

## WARNING

- Make sure the oil levels in both front fork

# FRONT FORK

legs are equal.

- Uneven oil levels can result in poor handling and a loss of stability.

## NOTE:

- When assembling the front fork leg, be sure to replace the following parts:
  - Inner tube bushing
  - Outer tube bushing
  - Oil seal
  - Dust seal
- Before assembling the front fork leg, make sure all of the components are clean.

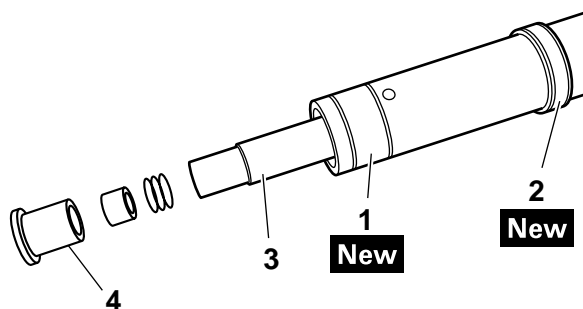
## 1. Install:

- Inner tube bushing "1" **New**
- Outer tube bushing "2" **New**
- Damper rod "3"
- Oil lock piece "4"

ECA14210

## CAUTION:

Allow the damper rod assembly to slide slowly down the inner tube "2" until it protrudes from the bottom of the inner tube. Be careful not to damage the inner tube.



## 2. Lubricate:

- Inner tube's outer surface



**Recommended oil**  
Fork oil 15W or equivalent

## 3. Tighten:

- Damper rod bolt "1"
- Washer



**Damper rod bolt**  
**18 Nm (1.8 m•kg, 13 ft•lb)**  
**LOCTITE®**

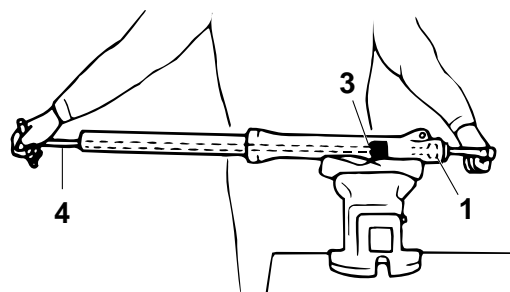
## NOTE:

While holding the damper rod with the damper rod holder "3" and T-handle "4", tighten the

damper rod bolt.



**Damper rod holder**  
**90890-01294**  
**Damping rod holder set**  
**YM-01300**  
**T-handle**  
**90890-01326**  
**T-handle 3/8" drive 60 cm long**  
**YM-01326**

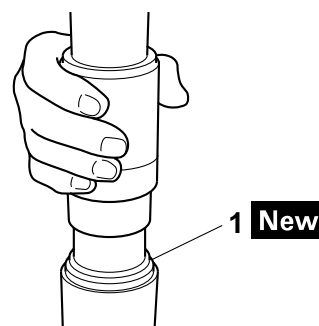


## 4. Install:

- Oil seal "1" **New**  
(with the fork seal driver and adapter)



**Fork seal driver weight**  
**90890-01367**  
**Replacement hammer**  
**YM-A9409-7**  
**Fork seal driver attachment (ø35)**  
**90890-01369**  
**Replacement 35 mm**  
**YM-A9409-5**



ECA14220

## CAUTION:

Make sure the numbered side of the oil seal faces up.

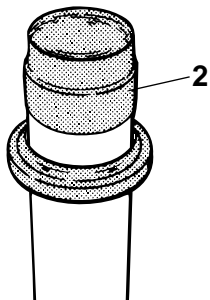
## NOTE:

- Before installing the oil seal, lubricate its lips with lithium soap base grease.
- Lubricate the outer surface of the inner tube

# FRONT FORK

with fork oil.

- Before installing the oil seal, cover the top of the front fork leg with a plastic bag “2” to protect the oil seal during installation.



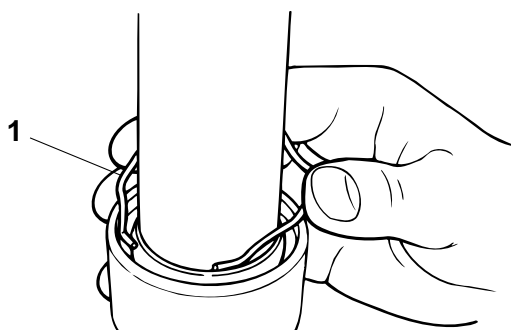
342-034

5. Install:

- Oil seal clip “1”

**NOTE:**

Adjust the oil seal clip so that it fits into the outer tube's groove.

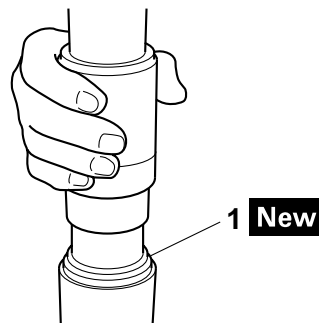


6. Install:

- Dust seal “1” **New**  
(with the fork seal driver weight)



**Fork seal driver weight**  
90890-01367  
**Replacement hammer**  
YM-A9409-7  
**Fork seal driver attachment (ø35)**  
90890-01369  
**Replacement 35 mm**  
YM-A9409-5



7. Fill:

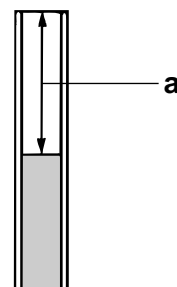
- Front fork leg  
(with the specified amount of the recommended fork oil)



**Quantity**  
292.0 cm<sup>3</sup> (9.87 US oz) (10.30 Imp.oz)  
**Recommended oil**  
Fork oil 15W or equivalent

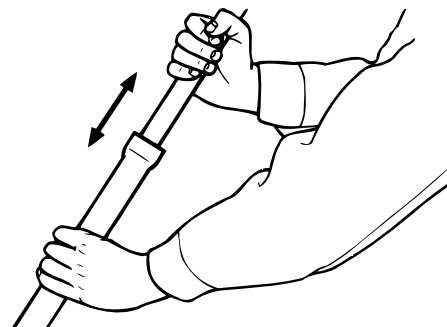


**Level**  
125.0 mm (4.92 in)



**NOTE:**

- While filling the front fork leg, keep it upright.
- After filling, slowly pump the front fork leg up and down to distribute the fork oil.



8. Install:

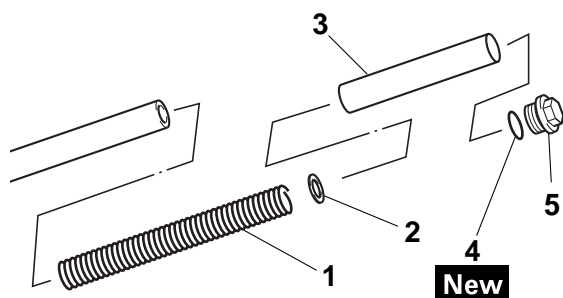
- Fork spring “1”

# FRONT FORK

- Fork spring seat “2”
- Spacer “3”
- O-ring “4” **New**
- Cap bolt “5”

## NOTE:

- Install the spring with the smaller pitch facing up.
- Before installing the cap bolt, lubricate its O-ring with grease.
- Temporarily tighten the cap bolt.



EAS23050

## INSTALLING THE FRONT FORK LEGS

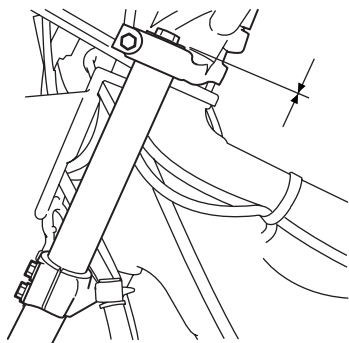
The following procedure applies to both of the front fork legs.

### 1. Install:

- Front fork leg  
Temporarily tighten the upper and lower bracket pinch bolts.

## NOTE:

Make sure the inner fork tube is flush with the top of the upper bracket.



### 2. Tighten:

- Lower bracket pinch bolt “1”



**Lower bracket pinch bolt**  
**23 Nm (2.3 m•kg, 17 ft•lb)**

- Cap bolt “2”



**Cap bolt**  
**23 Nm (2.3 m•kg, 17 ft•lb)**

- Upper bracket pinch bolt “3”

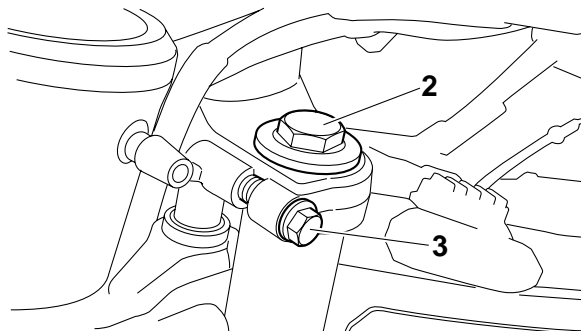
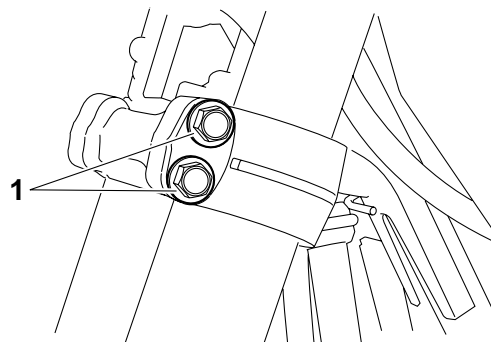


**Upper bracket pinch bolt**  
**23 Nm (2.3 m•kg, 17 ft•lb)**

EWA13680

## WARNING

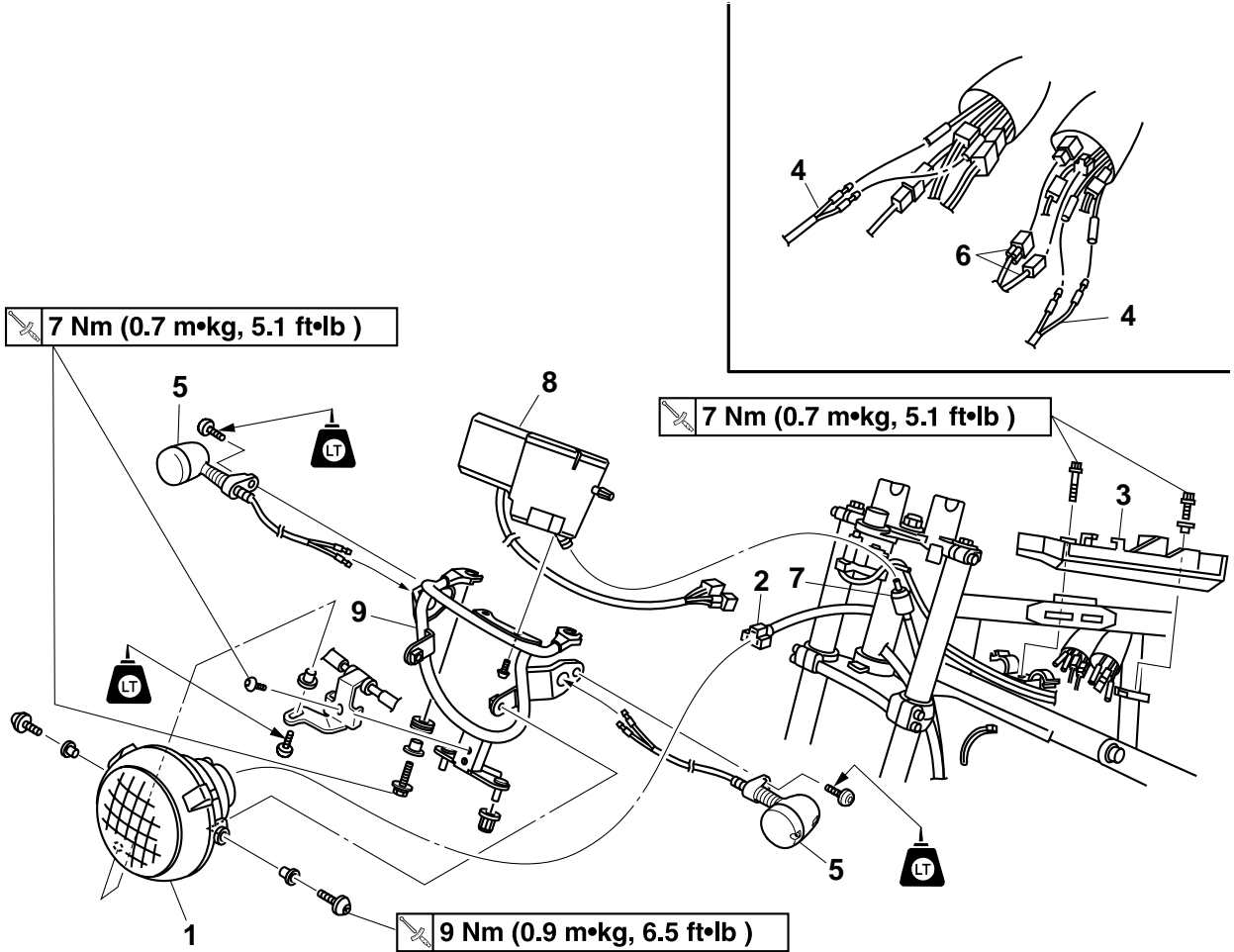
**Make sure the brake hoses are routed properly.**



EAS23090

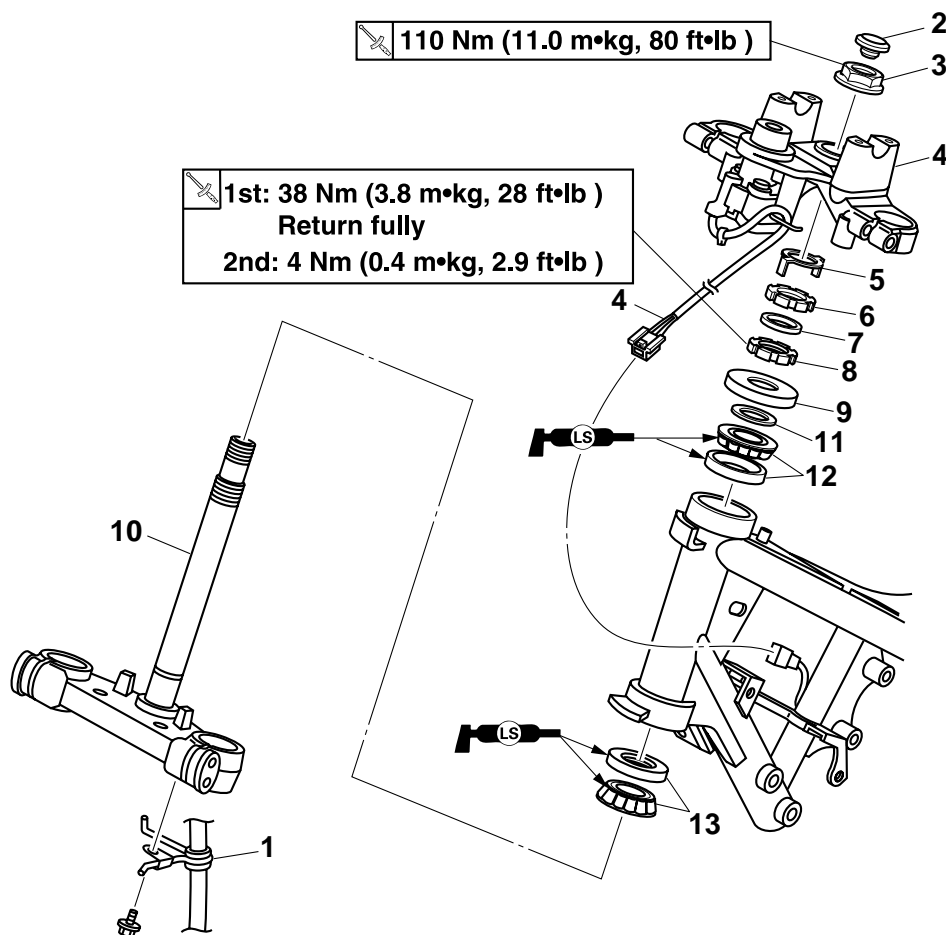
## STEERING HEAD

### Removing the headlight and meter



Order	Job/Parts to remove	Q'ty	Remarks
	Fuel tank		Refer to "FUEL TANK" on page 6-1.
	Handlebar		Refer to "HANDLEBAR" on page 4-38.
1	Headlight body	1	
2	Headlight coupler	1	Disconnect.
3	Tool box	1/1	
4	Front turn signal leads	2/2	
5	Front turn signal light assembly (left/right)	1/1	
6	Meter lead coupler	2	
7	Speedometer cable	1	
8	Meter	1	
9	Stay	1	
			For installation, reverse the removal procedure.

## Removing the lower bracket



Order	Job/Parts to remove	Q'ty	Remarks
	Front fork		Refer to "FRONT FORK" on page 4-41.
	Handlebar		Refer to "HANDLEBAR" on page 4-38.
	Headlight		
	Meter		
1	Cable guide	1	
2	Cap	1	
3	Steering stem nut	1	
4	Main switch coupler/Upper bracket	1/1	
5	Lock washer	1	
6	Upper ring nut	1	
7	Rubber washer	1	
8	Lower ring nut	1	
9	Ball race cover	1	
10	Lower bracket	1	
11	Washer	1	
12	Bearing/bearing race	1/1	
13	Bearing/bearing race	1/1	
			For installation, reverse the removal procedure.