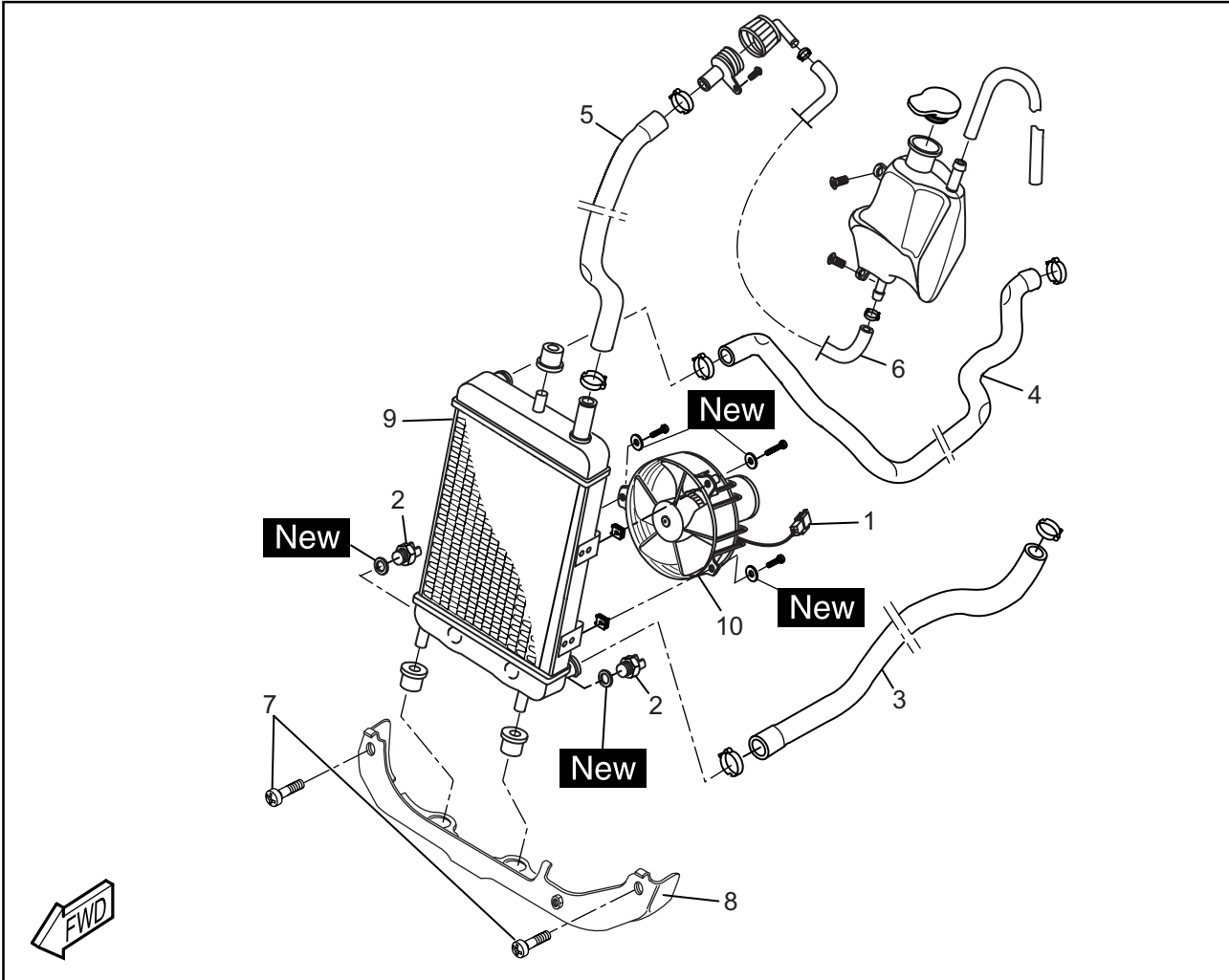




EASM0034

COOLING SYSTEM

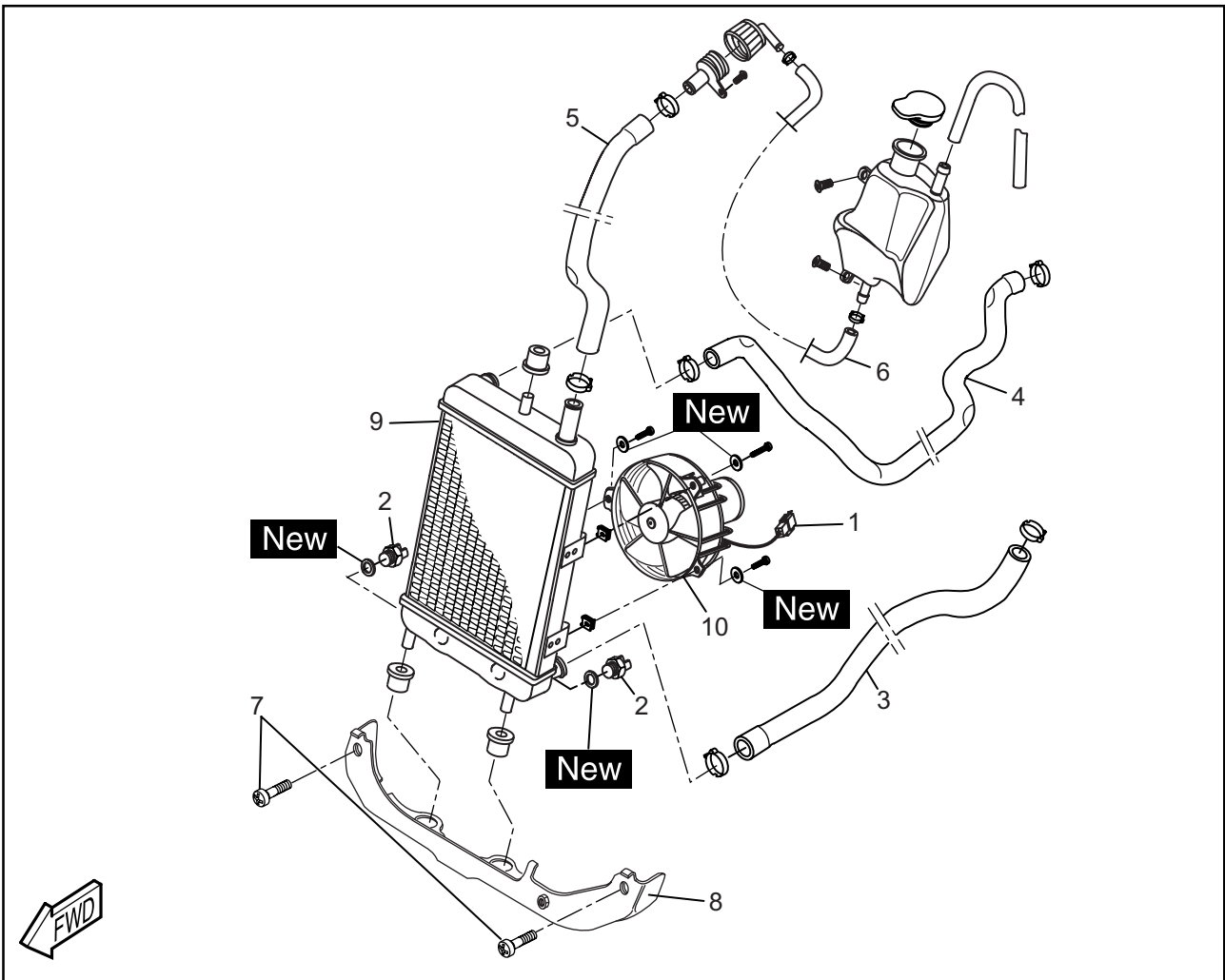
RADIATOR



Order	Job/Part	Q'ty	Remarks
	<b>Removing the radiator</b>		Remove the parts in the order listed.
	Drain coolant		Refer to "CHANGING THE COOLANT" section in chapter 3.
	Front under cover		Refer to "FRONT COVER" section in chapter 3.
I	Disconnet:		
1	Fan motor coupler	1	
2	Thermo switch connectors	4	
II	Unplug:		
3	Radiator outlet hose	1	
4	Radiator inlet hose	1	
5	Radiator filler hose	1	
6	Expansion tank hose	1	
III	Untight:		
7	Radiator bracket bolts (frame)	2	

# RADIATOR

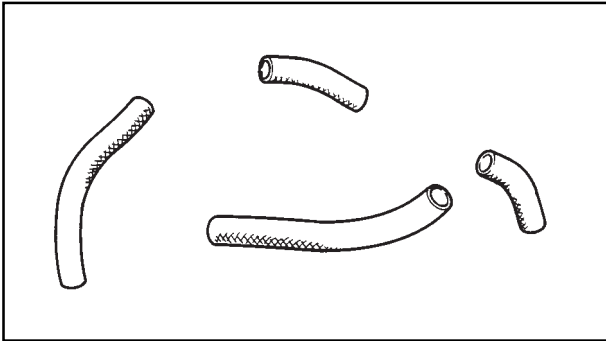
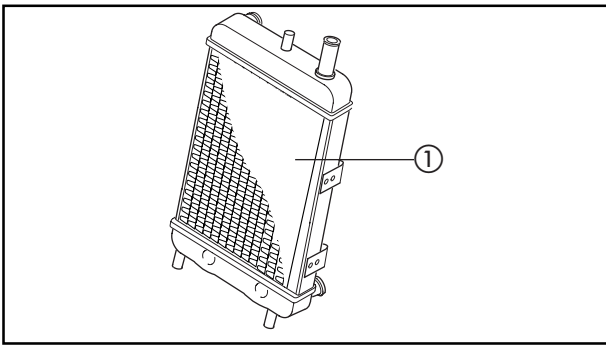
COOL



Order	Job/Part	Q'ty	Remarks
IV	Remove:		<b>NOTE:</b> _____ Avoid the radiator of falling _____ For installation, reverse the removal procedure.
8	Radiator bracket (frame)	1	
9	Radiator	1	
10	Radiator fan	1	

## RADIATOR

COOL



EAS00455

### CHECKING THE RADIATOR

#### 1. Check:

- radiator fins ①

Obstruction → Clean.

Apply compressed air to the rear of the radiator.

Damage → Repair or replace.

#### NOTE:

Straighten any flattened fins with a thin, flat-head screwdriver.

#### 2. Check:

- radiator hoses

Crack/damage → Replace.

#### 3. Check:

- radiator cap

Crack/damage → Replace.

#### 4. Check:

- radiator fan

Damage → Replace.

Malfunction → Check and repair.

Refer to "COOLING SYSTEM" section in chapter 8.

EAS00456

### INSTALLING THE RADIATOR

#### 1. Fill:

- cooling system

(with the specified amount of the recommended coolant)

Refer to "CHANGING THE COOLANT" section in chapter 3.

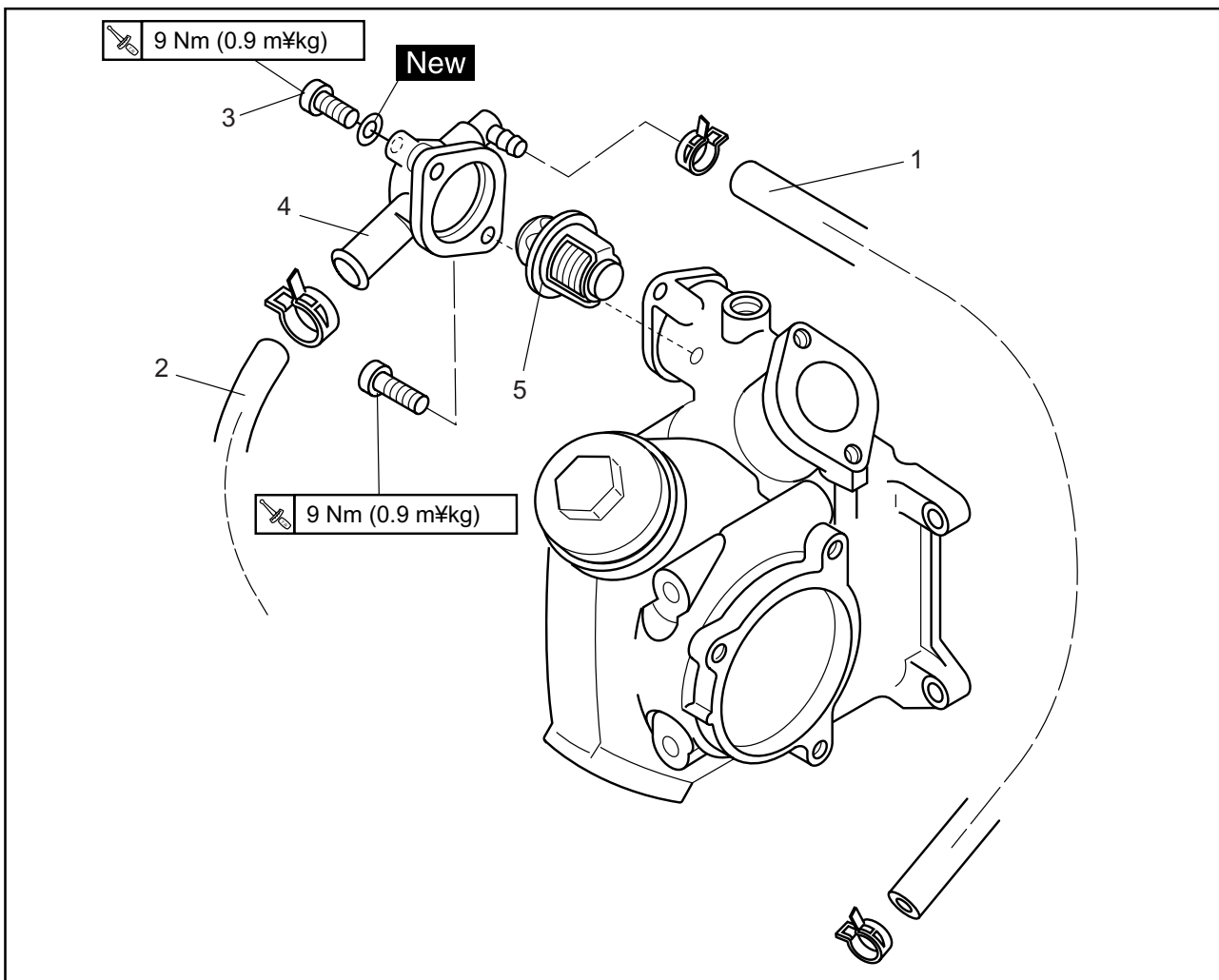
#### 2. Check:

- cooling system

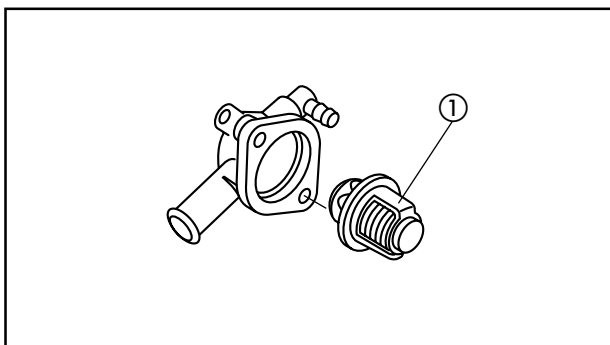
Leaks → Repair or replace any faulty part.

EASM0036

THERMOSTAT



Order	Job/Part	Q'ty	Remarks
	<b>Removing the thermostat</b>		
	Drain coolant		Remove the parts in the order listed. Refer to "CHANGING COOLANT" section in chapter 3.
	Seat		Refer to "BOX AND SEAT" section in chapter 3.
	Box		
1	Hose	1	
2	Cylinder head outlet hose	1	
3	Thermostat cover fixing screws	2	
4	Thermostat cover	1	
5	Thermostat	1	
			For installation, reverse the removal procedure.



EAS00462

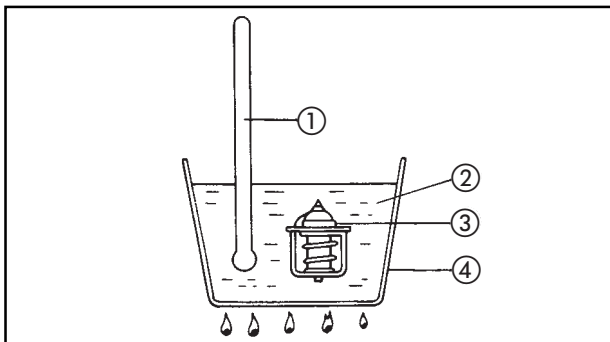
**CHECKING THE THERMOSTAT**

1. Check:

- thermostat ①
- Does not open at 79 ~ 85°C → Replace.



- a. Suspend the thermostat in a container filled with water.
- b. Slowly heat the water.
- c. Place a thermometer in the water.
- d. While stirring the water, observe the thermostat and thermometer's indicated temperature.



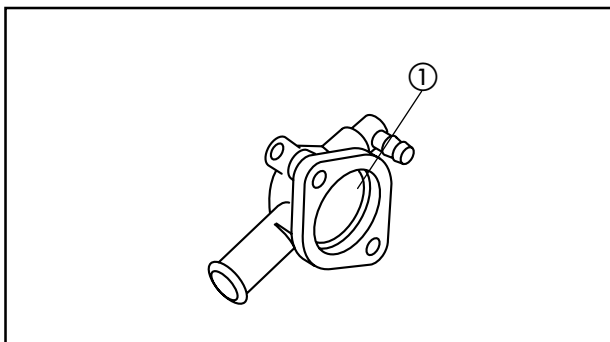
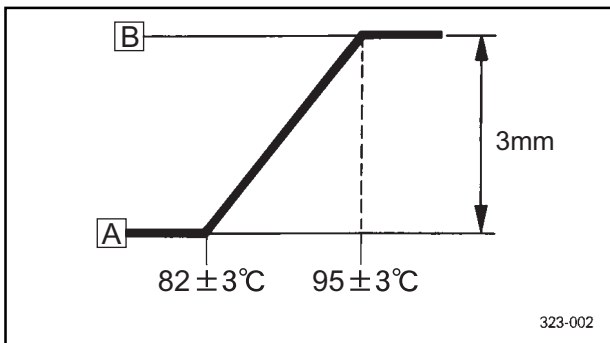
- ① Thermometer
- ② Water
- ③ Thermostat
- ④ Container
- A Fully closed
- B Fully open

**NOTE:**

\_\_\_\_\_

If the accuracy of the thermostat is in doubt, replace it. A faulty thermostat could cause serious overheating or overcooling.

\_\_\_\_\_



2. Check:

- thermostat housing cover ①
- thermostat housing
- Cracks/damage → Replace.

EASM0037

**INSTALLING THE THERMOSTAT**

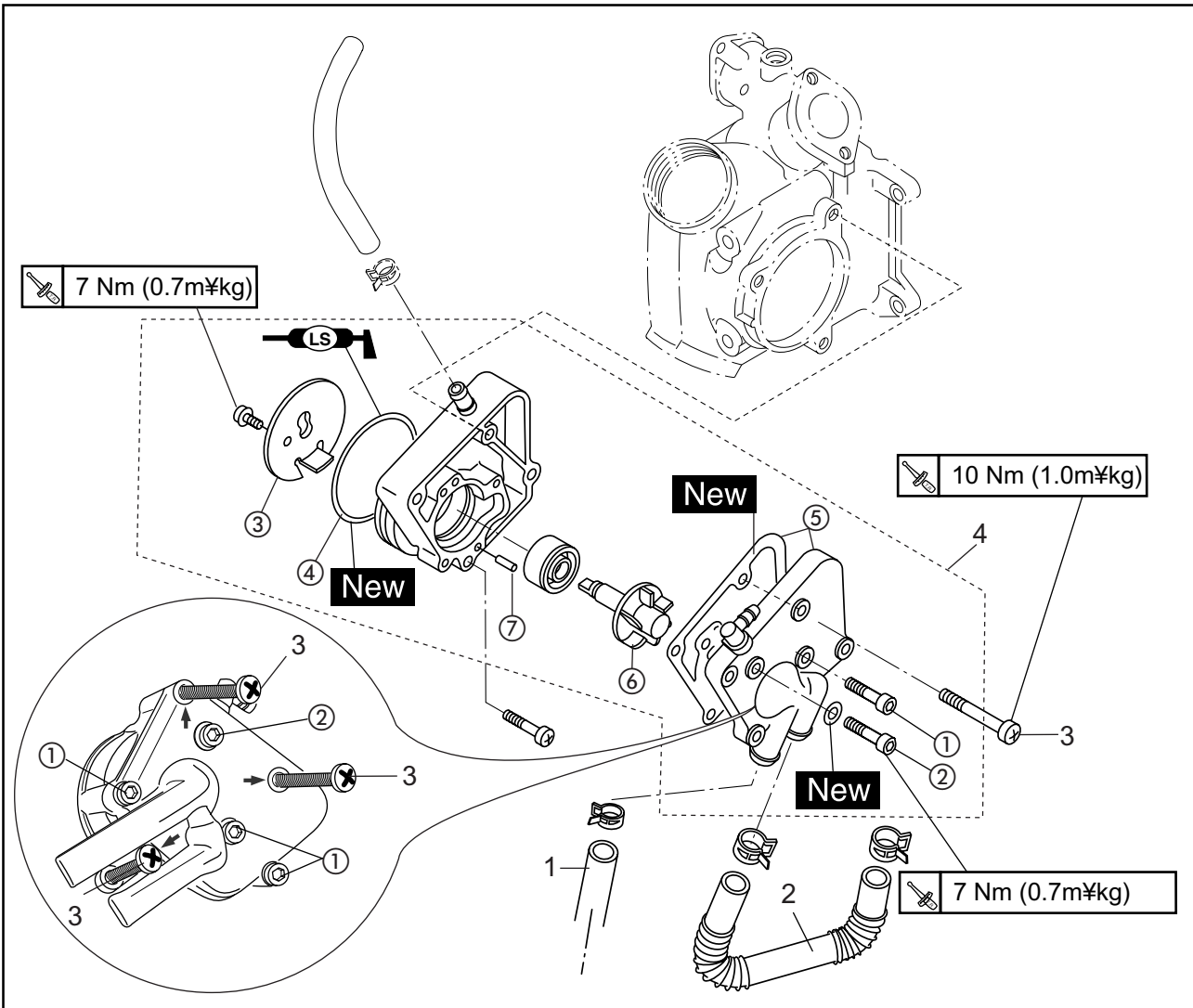
1. Install:

- thermostat
- thermostat cover
- hoses



EASM0035

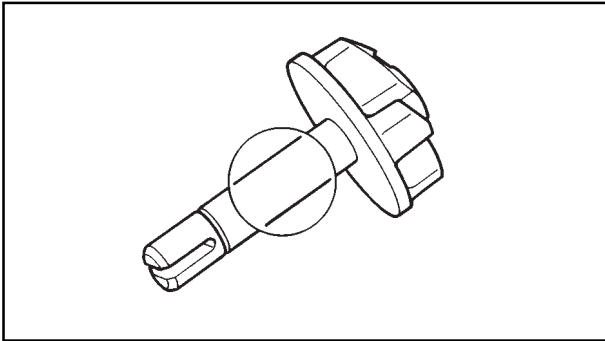
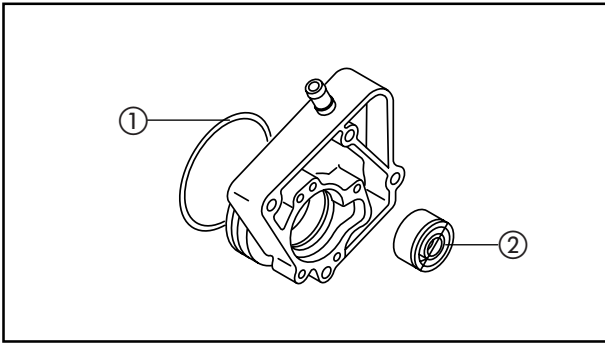
WATER PUMP



Order	Job/Part	Q'ty	Remarks
	<b>Removing the water pump</b>		Remove the parts in the order listed. Refer to "CHANGING THE COOLANT" section in chapter 3.
	Drain coolant		
1	Pump inlet hose	1	
2	Pump outlet hose	1	
3	Water pump fixing screws	3	<b>NOTE:</b> _____ Follow the arrows
4	Water pump assembly	1	
	<b>Disassembling water pump</b>		
①	Water pump mounting screws	4	
②	Bleed screw with copper washer	1/1	
③	Water pump inner cover	1	
④	O-ring	1	
⑤	Water pump cover/gasket	1/1	
⑥	Impeller shaft	1	
⑦	Dowel pin	1	
			For installation, reverse the removal procedure.

## WATER PUMP

COOL



EAS00472

### CHECKING THE WATER PUMP

1. Check:

- O-ring ①  
Damage/wear → Replace.
- oil seal ②  
Damage/wear → Replace the water pump housing assembly.

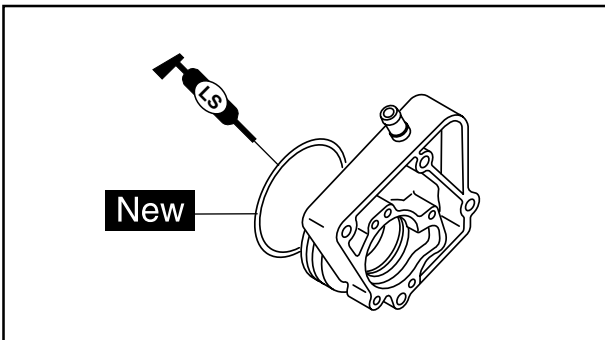
**NOTE:** \_\_\_\_\_

The mark "water side" on the oil seal should be installed outward.

\_\_\_\_\_

2. Check:

- impeller  
Cracks/damage/wear → Replace the water pump housing assembly.
- water pump housing  
Cracks/damage → Replace the water pump housing assembly.



EAS00477


### INSTALLING THE WATER PUMP

**NOTE:** \_\_\_\_\_

Always replace the entire water pump assembly.

\_\_\_\_\_

1. Install:

- impeller
- water pump inner cover
- screw  **7 Nm (0.7m•kg)**

**NOTE:** \_\_\_\_\_

After installation, check that the impeller shaft rotates smoothly.

\_\_\_\_\_

2. Install:

- O-ring **New**

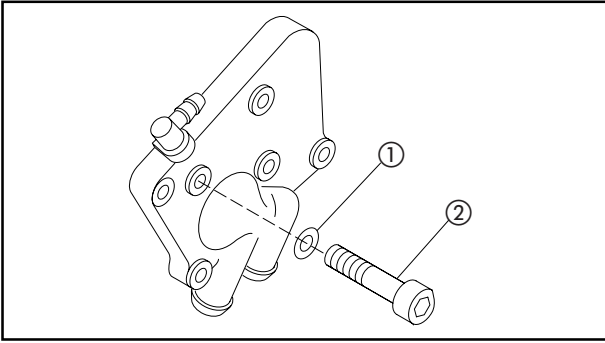
**NOTE:** \_\_\_\_\_

Lubricate the O-ring with a thin coat of lithium soap base grease.



\_\_\_\_\_

## WATER PUMP

COOL



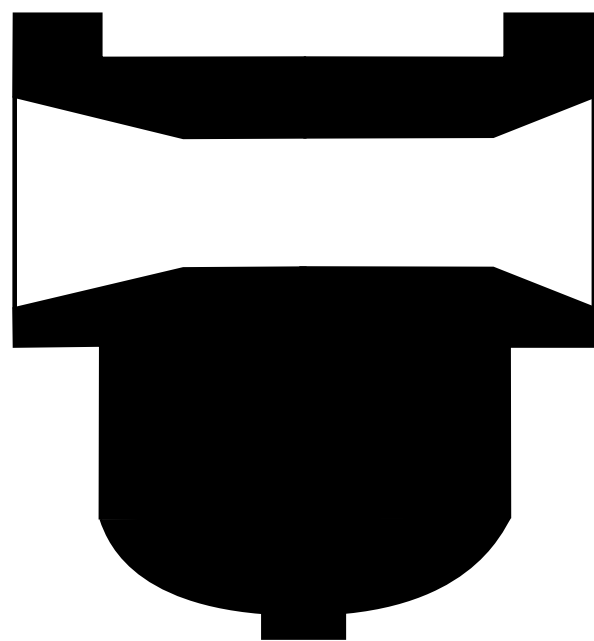
### 3. Install:

- dowel pin
- gasket **New**
- water pump housing cover
- screws  **7 Nm (0.7m•kg)**
- copper washer ① **New**
- bleed screw ②  **7 Nm (0.7m•kg)**

### NOTE:

Do not forget to install the copper washer on the bleed screw.





**CARB**

**6**

---

## **CHAPTER 6. CARBURETOR**

<b>CARBURETOR</b> .....	6-1
CARBURETOR REMOVAL .....	6-1
CARBURETOR DISASSEMBLY .....	6-2
CHECKING THE CARBURETOR .....	6-3
ASSEMBLING THE CARBURETOR .....	6-5
MEASURING AND ADJUSTING THE FUEL LEVEL .....	6-6
CHECKING THE AUTOCHOKE UNIT .....	6-6
CHECKING THE FUEL COCK .....	6-7