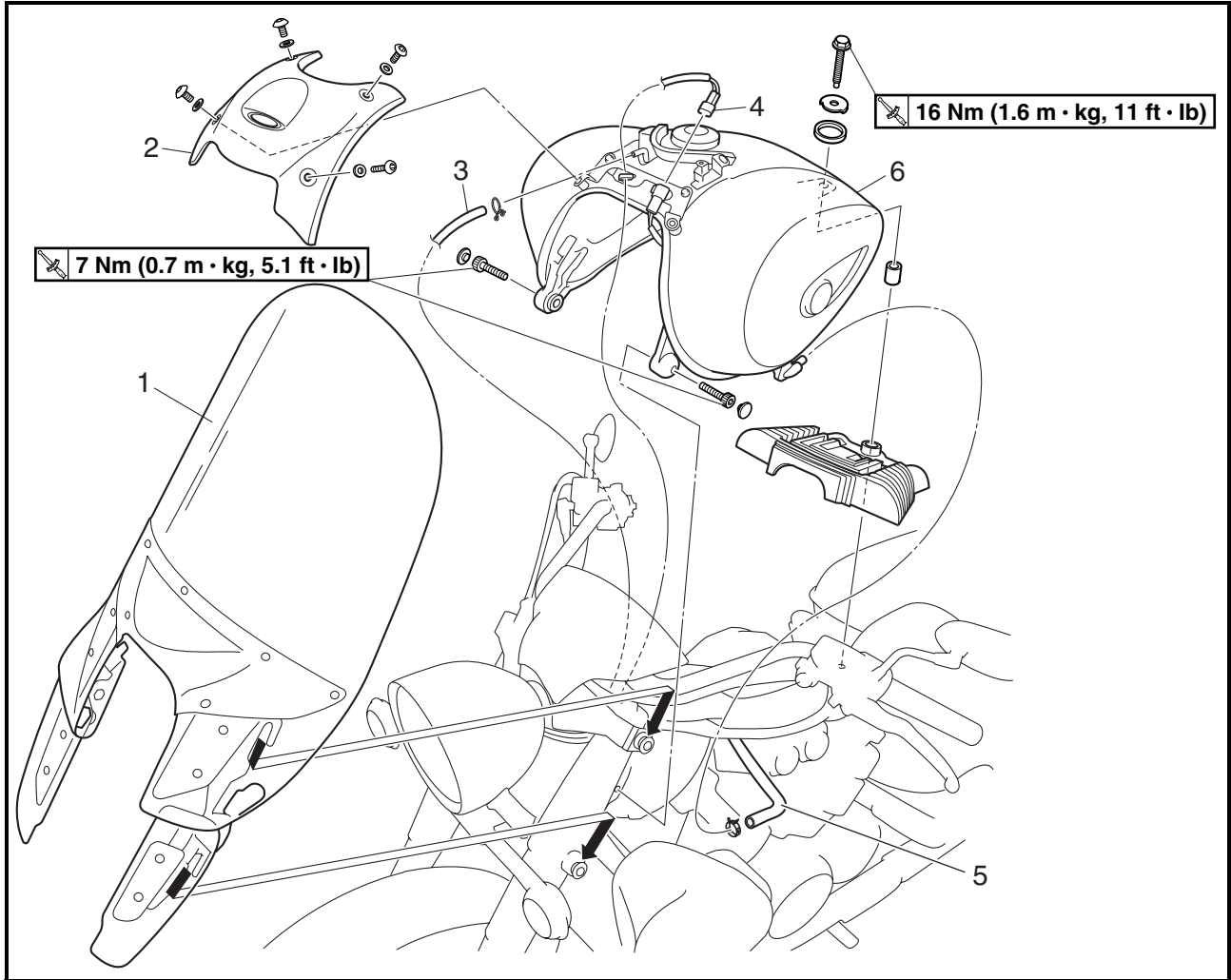


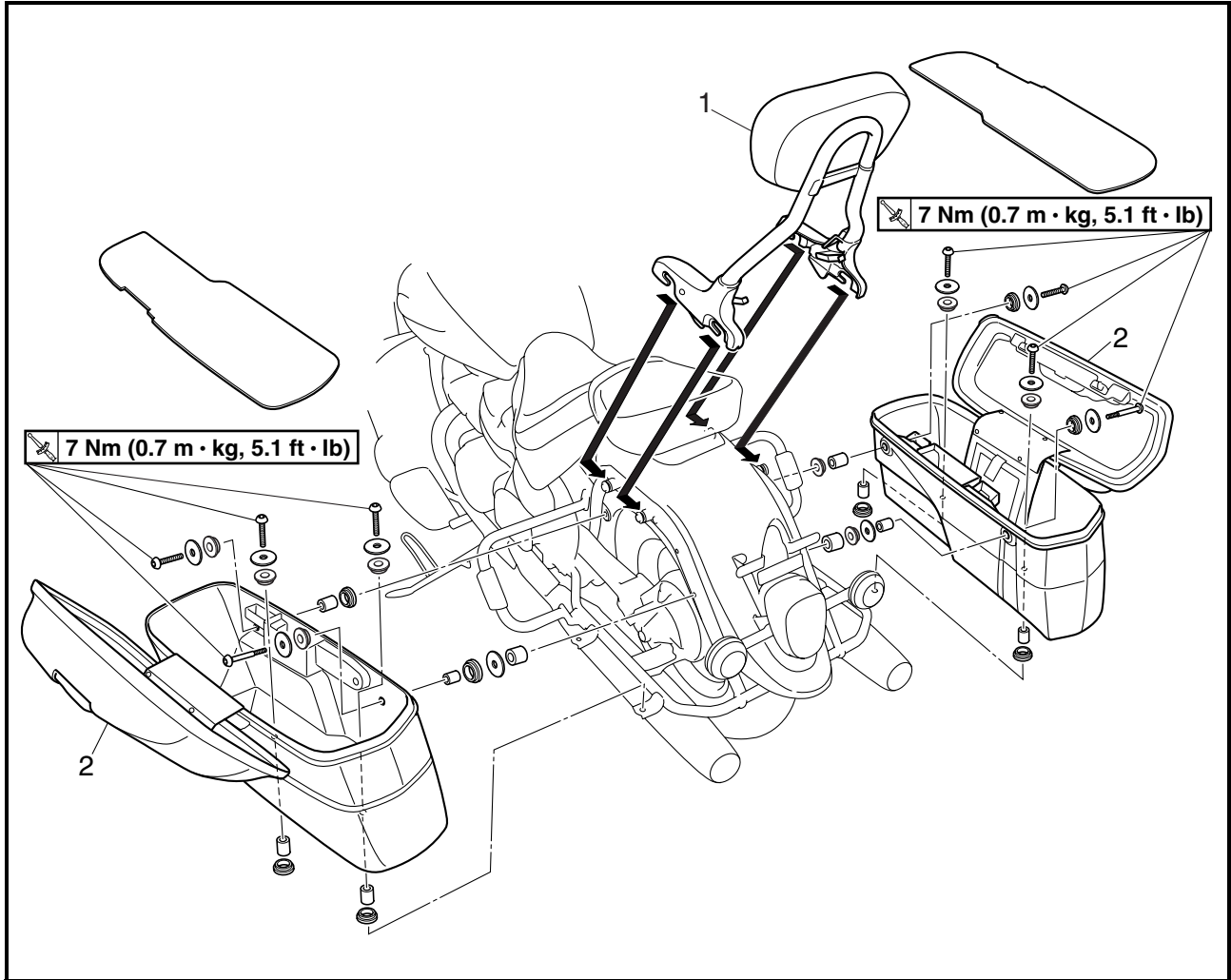
EB302002

WINDSHIELD AND FUEL TANK



Order	Job/Part	Q'ty	Remarks
	<b>Removing the windshield and fuel tank</b>		Remove the parts in the order listed.
	Rider seat		Refer to "RIDER AND PASSENGER SEATS".
1	Windshield	1	
2	Top cover	1	
3	Fuel tank breather hose	1	Disconnect.
4	Fuel sender lead coupler	1	Disconnect.
5	Fuel hose	1	Disconnect.
6	Fuel tank	1	<b>NOTE:</b> _____ Before disconnecting the hose, turn the fuel cock "OFF". _____ For installation, reverse the removal procedure.

BACKREST AND SIDECASES



Order	Job/Part	Q'ty	Remarks
	<b>Removing the backrest and side-case</b>		Remove the parts in the order listed.
1	Backrest	1	
2	Sidecase (left and right)	2	
			For installation, reverse the removal procedure.





Ring nut wrench  
YU-33975



Lower ring nut (initial tightening torque)  
52 Nm (5.2 m · kg, 37 ft · lb)

- c. Check the steering head for looseness or binding by turning the front fork all the way in both directions. If any binding is felt, remove the lower bracket and check the upper and lower bearings.  
Refer to “STEERING HEAD” in CHAPTER 7. (Manual No.: 4XY-28197-E0)
- d. Loosen the lower ring nut completely, then tighten it to specification.

**⚠ WARNING**

**Do not overtighten the lower ring nut.**

- e. Turn the steering all the way in both directions several times, and then tighten the lower ring nut to specification.



Lower ring nut (final tightening torque)  
18 Nm (1.8 m · kg, 13 ft · lb)


- f. Repeat step (e) until the lower ring nut does not turn.
- g. Install the rubber washer ③.
- h. Install the upper ring nut ②.
- i. Finger tighten the upper ring nut ②, then align the slots of both ring nuts. If necessary, hold the lower ring nut and tighten the upper ring nut until their slots are aligned.
- j. Install the lock washer ①.

**NOTE:**


Make sure the lock washer tabs sit correctly in the ring nut slots.




- 8. Install:
  - upper bracket
  - washer
  - steering stem nut

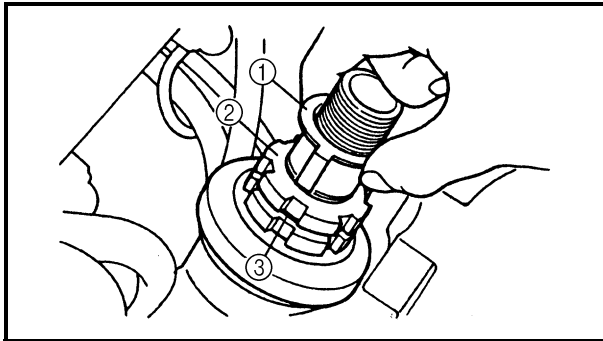
 130 Nm (13.0 m · kg, 94 ft · lb)

- 9. Tighten:
  - upper bracket pinch bolts

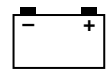
 10 Nm (1.0 m · kg, 72 ft · lb)

- handlebar bracket bolts

 28 Nm (2.8 m · kg, 20 ft · lb)







ELECTRICAL SYSTEM

EAS00731

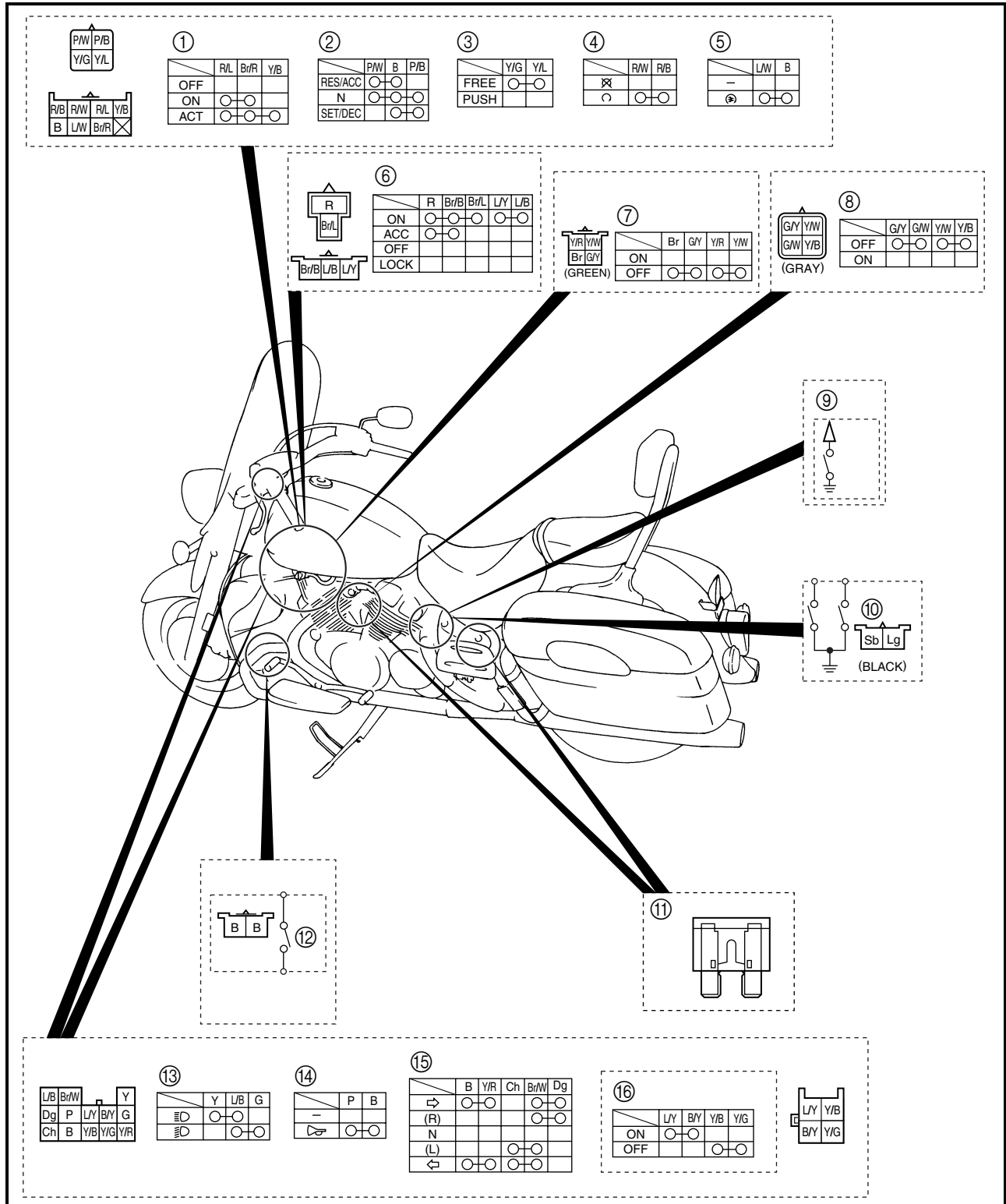
CHECKING THE SWITCHES

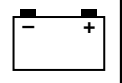
Check each switch for damage or wear, proper connections, and also for continuity between the terminals. Refer to "CHECKING SWITCH CONTINUITY". (Manual No.: 4XY-28197-E0)

Damage/wear → Repair or replace.

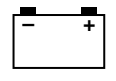
Improperly connected → Properly connect.

Incorrect continuity reading → Replace the switch.

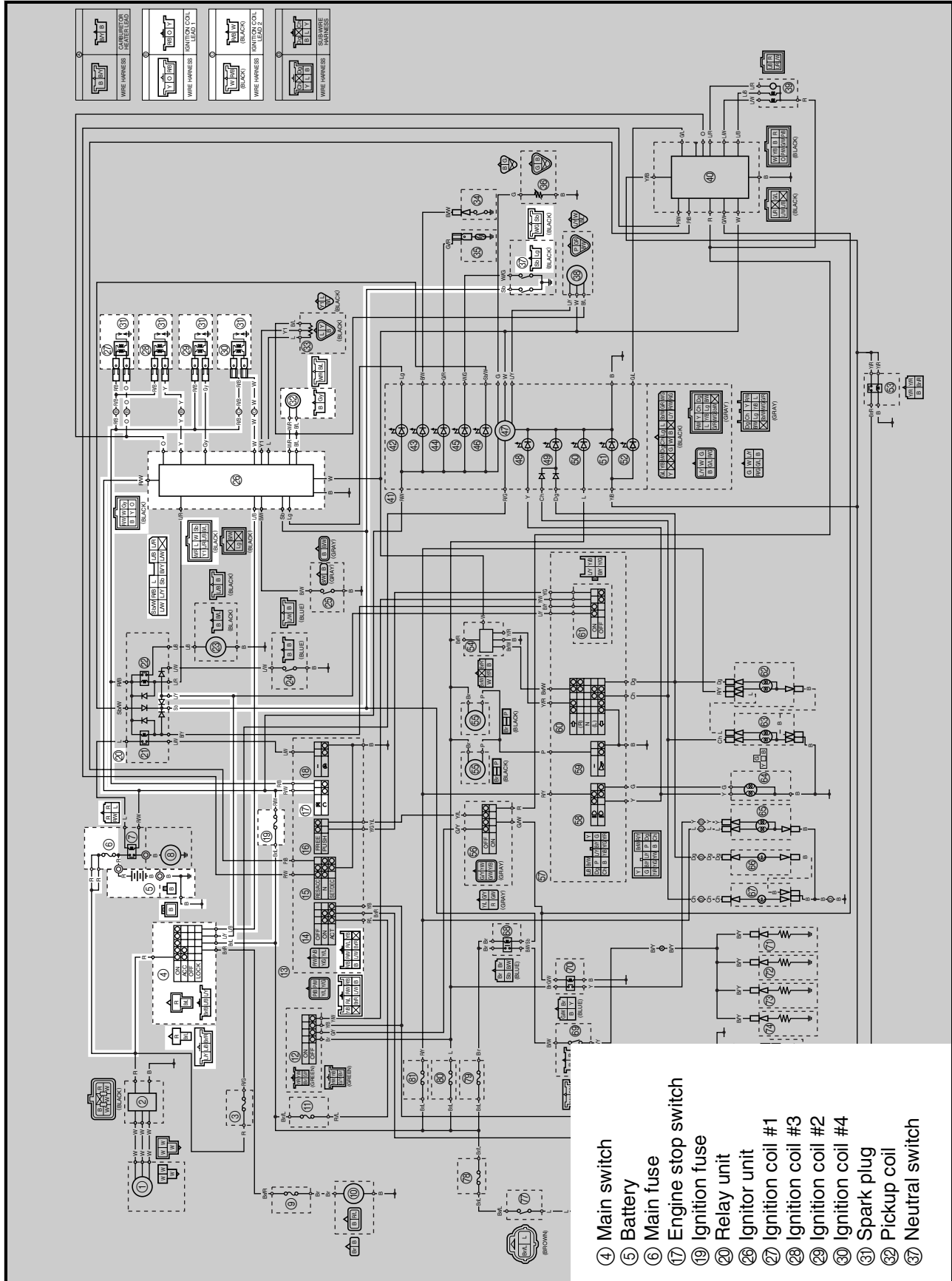




- ① “CRUISE” switch
- ② Cruise control switch
- ③ “CANCEL” switch
- ④ Engine stop switch
- ⑤ Start switch
- ⑥ Main switch
- ⑦ Front brake switch
- ⑧ Rear brake switch
- ⑨ Oil level switch
- ⑩ Neutral switch
- ⑪ Fuses
- ⑫ Sidestand switch
- ⑬ Dimmer switch
- ⑭ Horn switch
- ⑮ Turn signal switch
- ⑯ Clutch switch



IGNITION SYSTEM  
CIRCUIT DIAGRAM



- ④ Main switch
- ⑤ Battery
- ⑥ Main fuse
- ⑰ Engine stop switch
- ⑱ Ignition unit
- ⑳ Relay unit
- ㉒ Ignitor coil #1
- ㉓ Ignitor coil #3
- ㉔ Ignitor coil #2
- ㉕ Ignitor coil #4
- ㉖ Spark plug
- ㉗ Pickup coil
- ㉘ Neutral switch