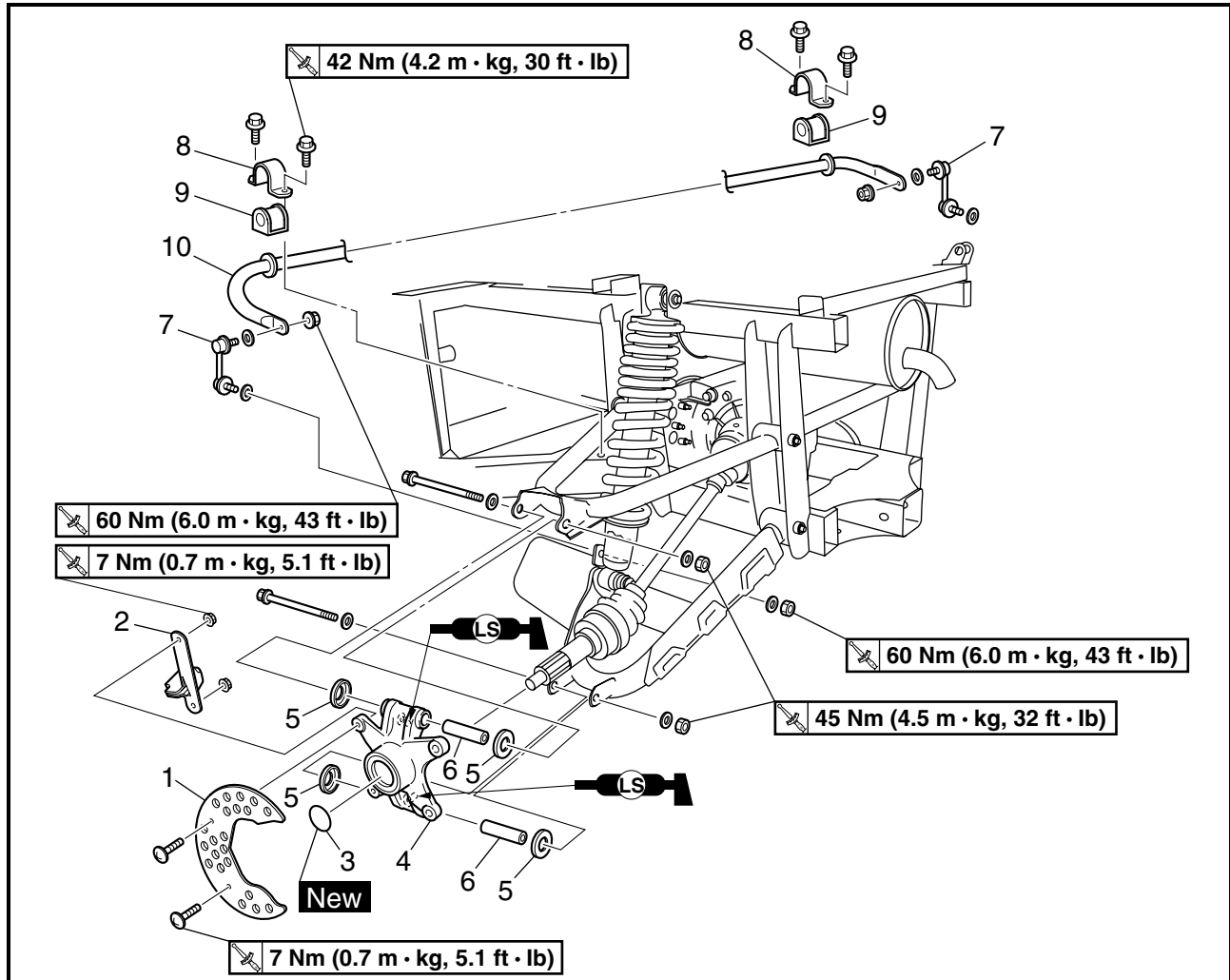




REAR KNUCKLE AND STABILIZER

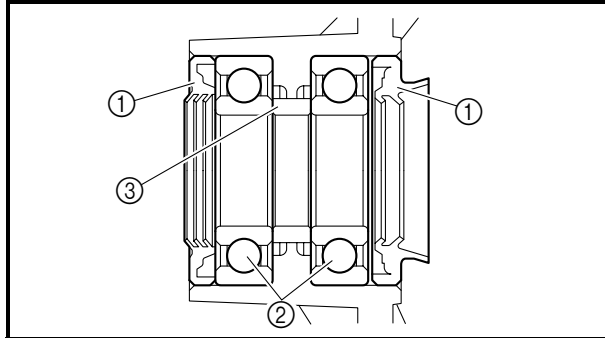


Order	Job/Part	Q'ty	Remarks
	Removing the rear knuckle and stabilizer		Remove the parts in the order listed.
	Rear wheel hubs		Refer to "FRONT AND REAR WHEELS".
1	Brake disc guard	1	
2	Plate	1	For models equipped with cast wheels
3	O-ring	1	
4	Rear knuckle	1	
5	Spacer cover	4	
6	Spacer	2	
7	Stabilizer joint	2	
8	Stabilizer holder	2	
9	Bushing	2	
10	Stabilizer	1	
			For installation, reverse the removal procedure.



CHECKING THE REAR KNUCKLES

1. Check:
 - rear knuckle
Damage/pitting → Replace.
2. Check:
 - rear wheel bearings
Bearings allow play in the wheel hubs or the wheel turns roughly → Replace.
 - oil seals
Damage → Replace.



- a. Clean the outside of the rear knuckle.
- b. Remove the oil seals ①.
- c. Drive out the bearings ②.

⚠ WARNING

Eye protection is recommended when using striking tools.

- d. Remove the spacer ③.
- e. Apply lithium base grease to the new bearings and oil seals.
- f. Install the spacer to the rear knuckle.
- g. Install the new bearings.

TIP: _____
Install the outside bearing first.

NOTICE

Do not strike the center race or balls of the bearing. Contact should be made only with the outer race.

- h. Install a new oil seal.

TIP: _____
When installing the oil seals, the “seal side” of the oil seal faces out.

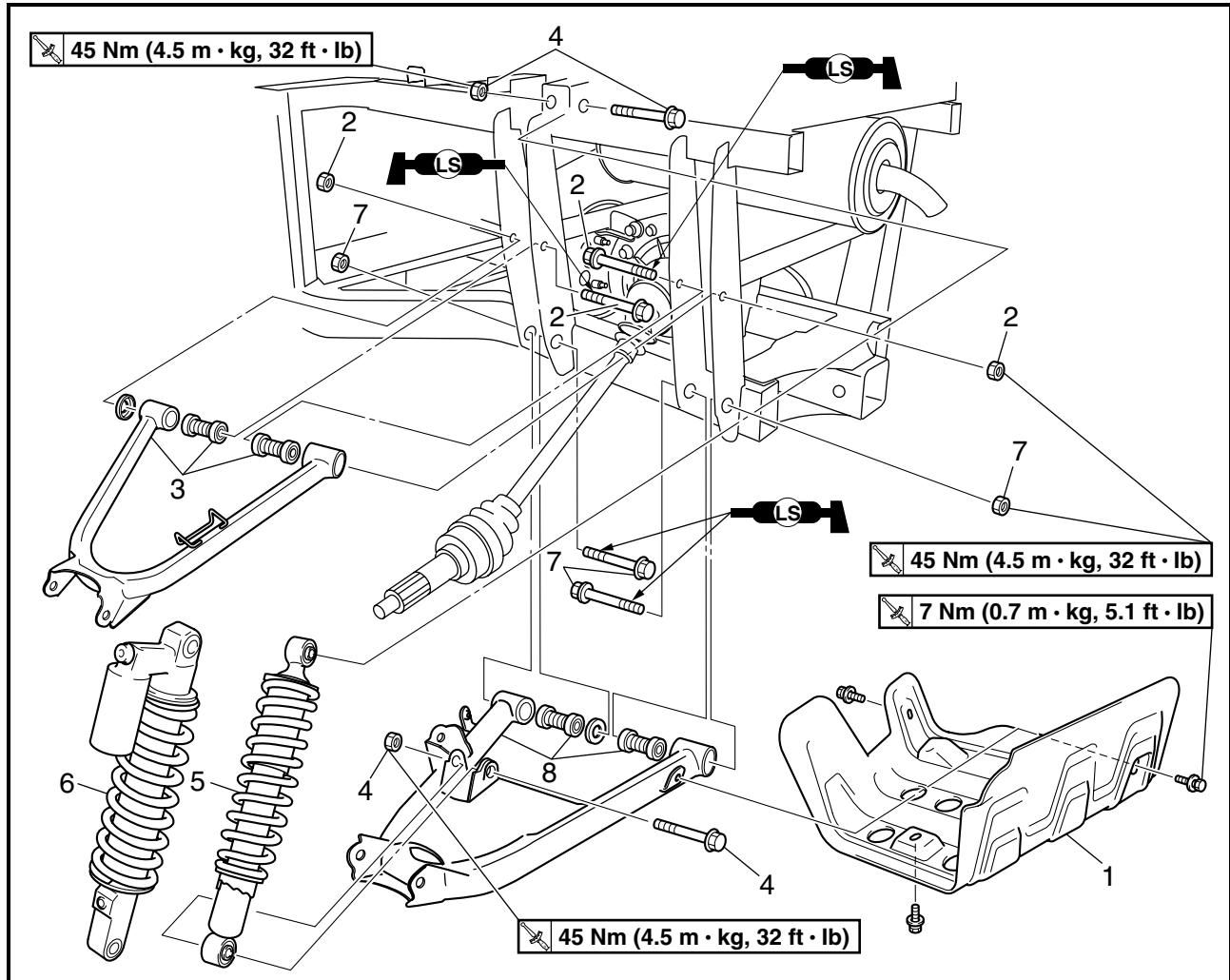


CHECKING THE STABILIZER

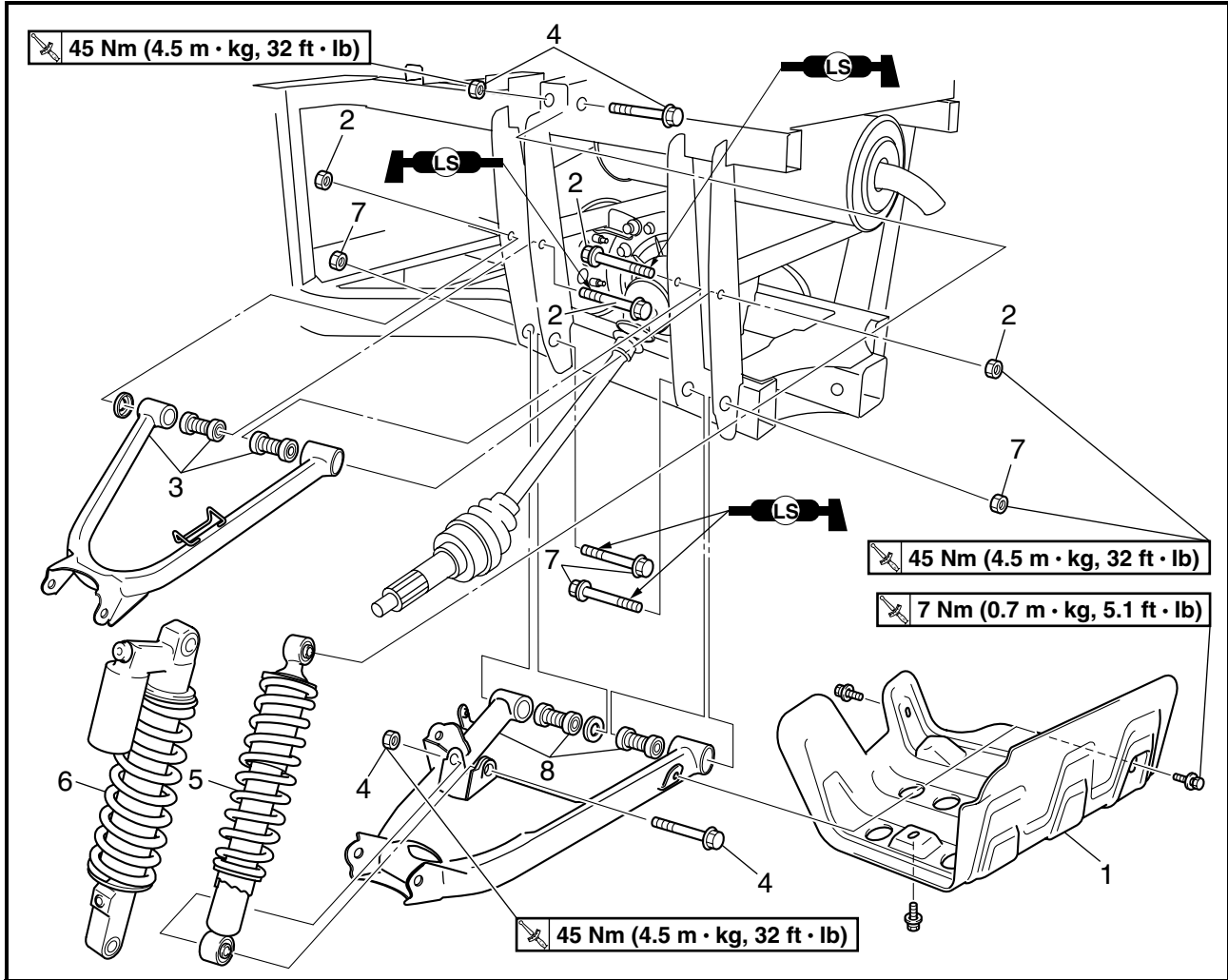
1. Check:
 - stabilizer
Bends/cracks/damage → Replace.



REAR ARMS AND REAR SHOCK ABSORBER



Order	Job/Part	Q'ty	Remarks
	Removing the rear arms and rear shock absorber		Remove the parts in the order listed.
	Rear knuckle/stabilizer		Refer to "REAR KNUCKLE AND STABILIZER".
1	Rear arm protector	1	Refer to "INSTALLING THE REAR ARMS AND REAR SHOCK ABSORBER".
2	Nut/bolt	2/2	
3	Rear upper arm/bushing	1/2	
4	Nut/bolt	2/2	
5	Rear shock absorber	1	
			For models equipped with oil damper shock absorbers Refer to "INSTALLING THE REAR ARMS AND REAR SHOCK ABSORBER".



Order	Job/Part	Q'ty	Remarks
6	Rear shock absorber	1	For models equipped with gas-oil damper shock absorbers Refer to "INSTALLING THE REAR ARMS AND REAR SHOCK ABSORBER".
7	Nut/bolt	2/2	Refer to "INSTALLING THE REAR ARMS AND REAR SHOCK ABSORBER". For installation, reverse the removal procedure.
8	Rear lower arm/bushing	1/2	



CHECKING THE REAR ARMS

1. Check:
 - rear arms
Bends/damage → Replace.
2. Check:
 - bushings
Wear/damage → Replace.

EBS00485

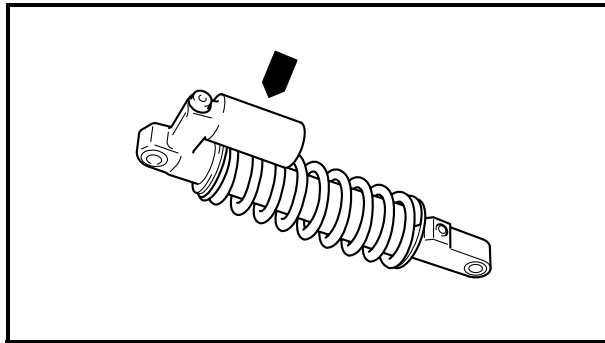
HANDLING THE REAR SHOCK ABSORBERS AND GAS CYLINDERS

(For models equipped with gas-oil damper shock absorbers)

WARNING

This rear shock absorber and gas cylinder contain highly compressed nitrogen gas. Before handling the rear shock absorber or gas cylinder, read and make sure you understand the following information. The manufacturer cannot be held responsible for property damage or personal injury that may result from improper handling of the rear shock absorber and gas cylinder.

- Do not tamper or attempt to open the rear shock absorber or gas cylinder.
- Do not subject the rear shock absorber or gas cylinder to an open flame or any other source of high heat. High heat can cause an explosion due to excessive gas pressure.
- Do not deform or damage the rear shock absorber or gas cylinder in any way. If the rear shock absorber, gas cylinder or both are damaged, damping performance will suffer.



EBS00486

DISPOSING OF A REAR SHOCK ABSORBER AND GAS CYLINDER (For models equipped with gas-oil damper shock absorbers)

Gas pressure must be released before disposing of a rear shock absorber and gas cylinder. To release the gas pressure, press on the gas valve needle with a suitable tool as shown, until all of the gas is released (the hissing has stopped).

⚠ WARNING

Wear eye protection to prevent eye damage from released gas or metal chips.

CHECKING THE REAR SHOCK ABSORBERS

1. Check:

- shock absorber rod
Bends/damage → Replace the shock absorber assembly.
- shock absorber assembly
Oil leaks → Replace the shock absorber assembly.
- spring
Move the spring up and down.
Fatigue → Replace the shock absorber assembly.