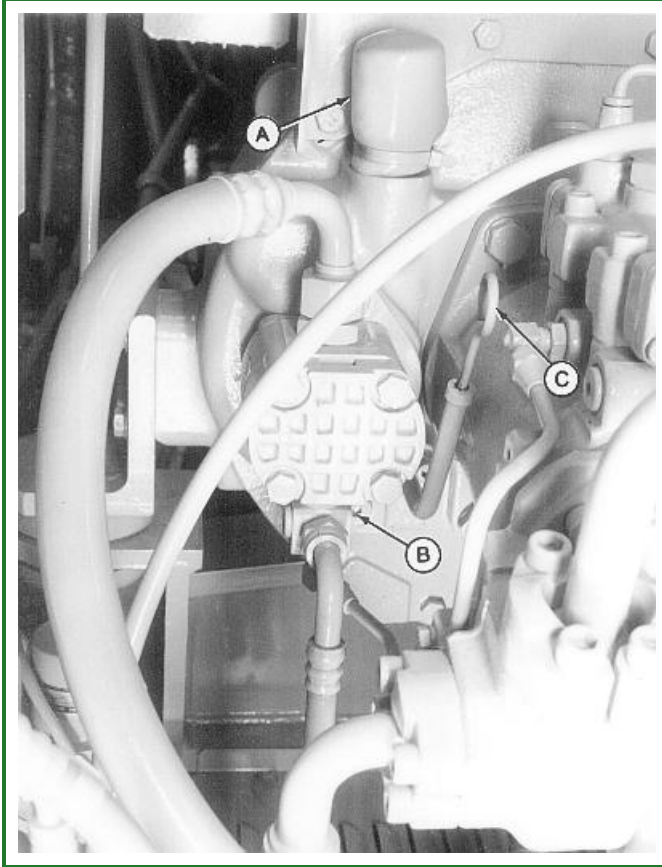


Change Pump Drive Gearbox Oil

1.



T101494-UN: Change Pump Drive Gearbox Oil

LEGEND:

- A - Filler Plug
- B - Drain Plug
- C - Dipstick

Remove plastic cap and filler plug (A).

2. Remove drain plug (B). Allow oil to drain into a container. Dispose of waste oil properly.
3. Apply Liquid TEFLON Pipe Thread Sealant to drain plug. Install plug.

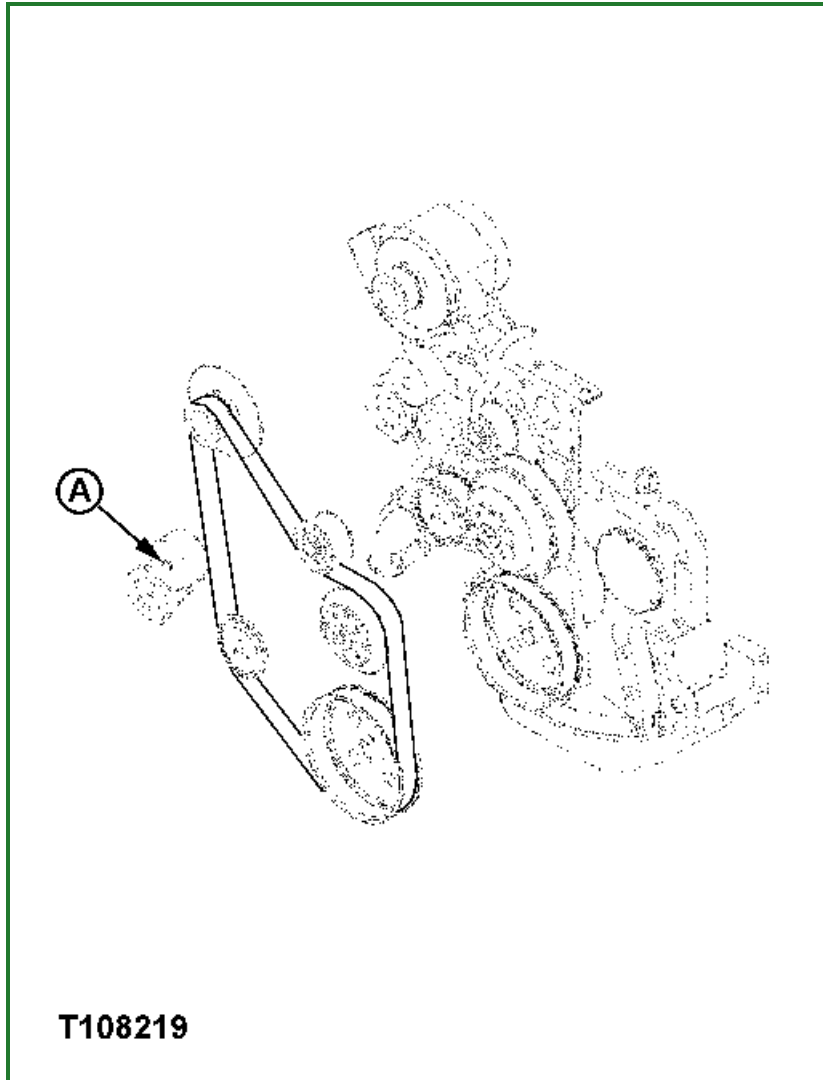
Item	Measurement	Specification
Pump gearbox	Capacity	1.0 L (1.1 qt)

4. Add oil. (See Fuels and Lubricants chapter.)
5. Pull dipstick (C) and check oil level. Oil level must be approximately halfway below "H" (level) mark.
6. Install filler cap. Install dipstick.

TX,85,DH5686-19-1996/07/03

Inspect Fan Belt

1.



T108219-UN: Inspect Fan Belt

LEGEND:

A - Top Pulley

Check belt regularly for wear, especially for cracks at the bottom of grooves and for frayed edges.

2. If necessary, replace belt.
3. Install a 15 mm wrench to the TOP pulley (A) of belt tension adjuster. Turn wrench counterclockwise to pull tension adjuster pulley away from belt, releasing belt tension.
4. Hold tension adjuster away from belt while removing old belt and installing new belt.
5. Slowly release wrench tension to allow tension adjuster to move clockwise against new belt. Tension is automatically adjusted.
6. Remove wrench.

TX,85,DH5606-19-1996/12/17