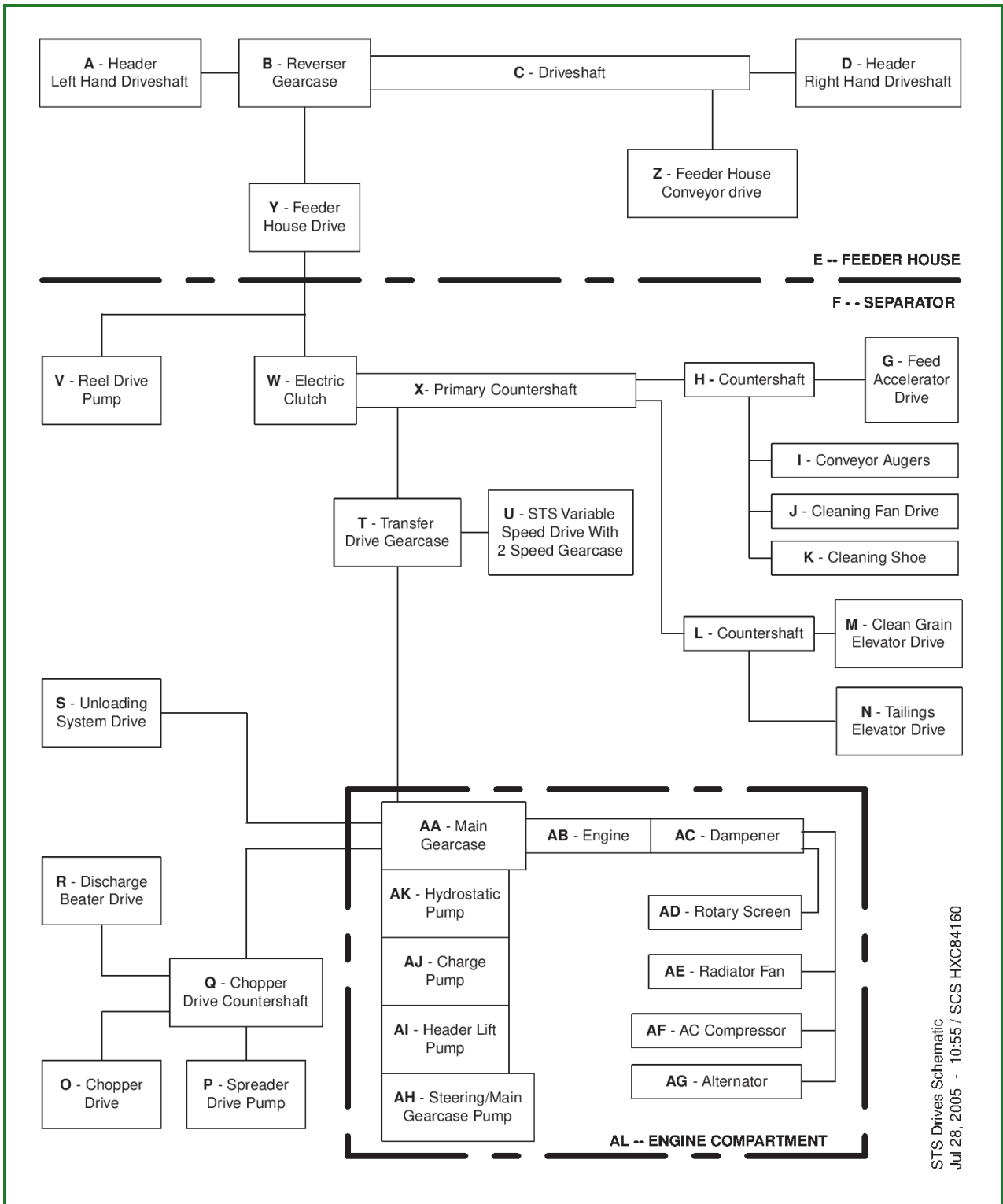


Schematic



STS Drives Schematic
 Jul 28, 2005 - 10:55 / SCS HXC84160

HXC84160-UN: NA STS Drives Schematic

LEGEND:

- A - Header Left Hand Driveshaft
- B - Reverser Gearcase
- C - Driveshaft
- D - Header Right Hand Driveshaft
- E - Feeder House
- F - Separator
- G - Feed Accelerator Drive
- H - Countershaft

- I - Conveyor Augers
- J - Cleaning Fan Drive
- K - Cleaning Shoe Drive
- L - Countershaft
- M - Clean Grain Elevator Drive
- N - Tailings Elevator Drive
- O - Chopper Drive
- P - Spreader Drive Pump
- Q - Chopper Drive Countershaft
- R - Discharge Beater Drive
- S - Unloading System Drive
- T - Transfer Drive Gearcase
- U - STS Variable Speed Drive With 2 Speed Gearcase
- V - Reel Drive Pump
- W - Electric Clutch
- X - Primary Countershaft
- Y - Feeder House Drive
- Z - Feeder House Conveyor Drive
- AA - Main Gearcase
- AB - Engine
- AC - Dampener
- AD - Rotary Screen
- AE - Radiator Fan
- AF - A/C Compressor
- AG - Alternator
- AH - Steering/Main Gearcase Pump
- AI - Header Lift Pump
- AJ - Charge Pump
- AK - Hydrostatic Pump
- AL - Engine Compartment

[Go to Section_300:Group_15](#)

HX05709,0005F80-19-20060815