

TX1056819-UN: Exploded View of Stacking Blade

LEGEND:

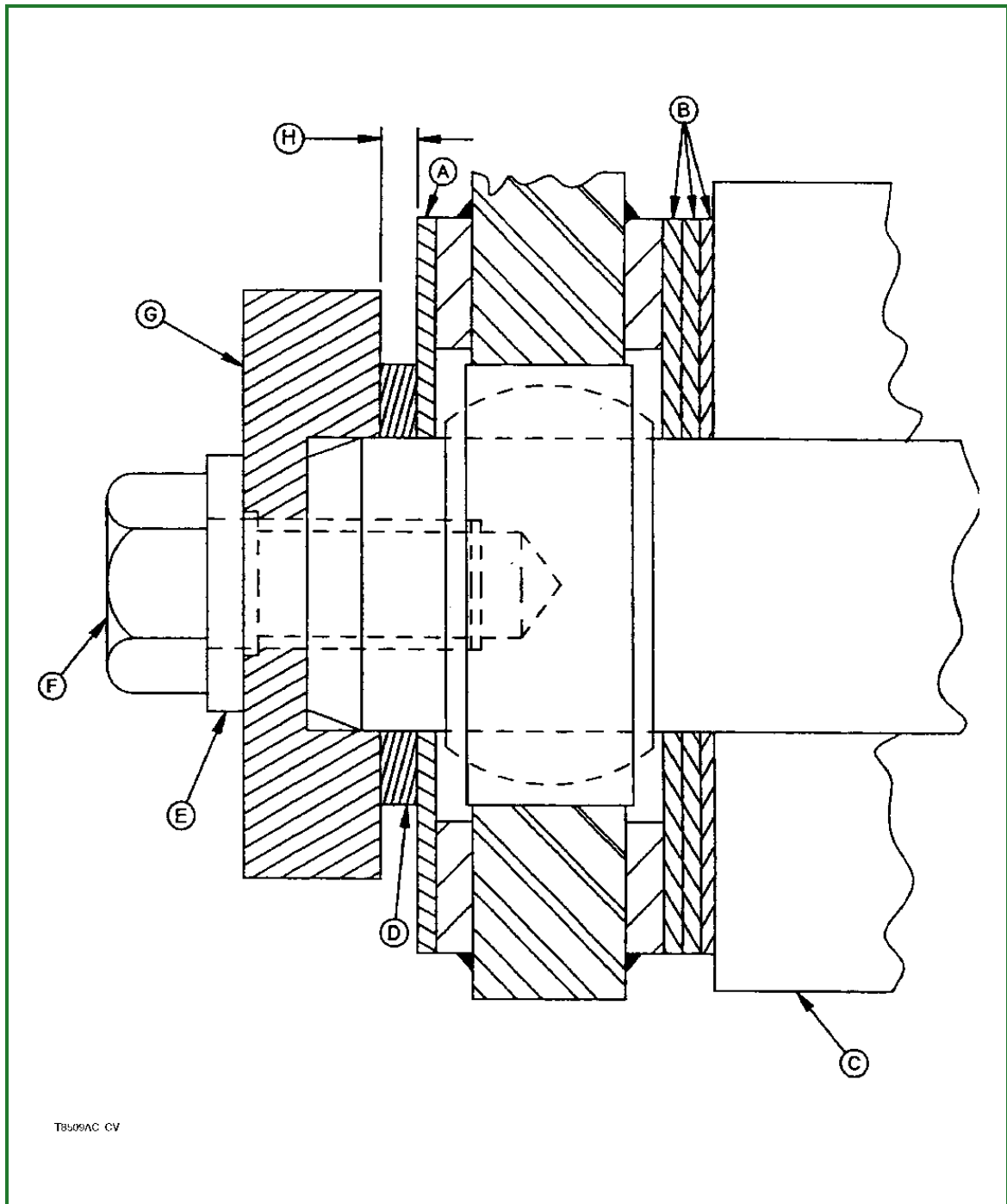
- 4 - Stacking Blade
- 5 - Bushing
- 6 - Lubrication Fitting
- 7 - Cap Screw
- 8 - Bushing
- 9 - Washer
- 10 - Seal
- 11 - Washer
- 12 - Cap Screw
- 13 - Pin
- 14 - Lock Nut

Support stacking blade (4).

Item	Measurement	Specification
Stacking Blade—Standard	Weight (approximate)	1025 kg 2260 lb
Stacking Blade—Heavy Duty	Weight (approximate)	1360 kg 3000 lb

6. Lower bottom guard.
7. Remove cap screws (7).
8. Remove lock nut (14) and cap screw (12).
9. Remove pin (13) and stacking blade (4).
10. Inspect stacking blade for cracks or damage.
11. Inspect spherical bushings in cylinder bores and blade pivot bores for wear or damage. If a bushing must be replaced, see [Spherical Bushing Remove and Install](#) . (Group 3201.)

12.

**T8509AC-UN: Blade Lower Pin****LEGEND:**

A - Washer (as required)

B - Shim (as required)

C - Engine Frame

D - Seal Washer

E - Hardened Washer

F - Cap Screw

G - Blade Pin Cap

- Washer

H - 3—6 mm (0.120—0.240 in.) Clearance Dimension

Install stacking blade with washers properly positioned as shown.

13. Replace lubrication fittings if necessary.